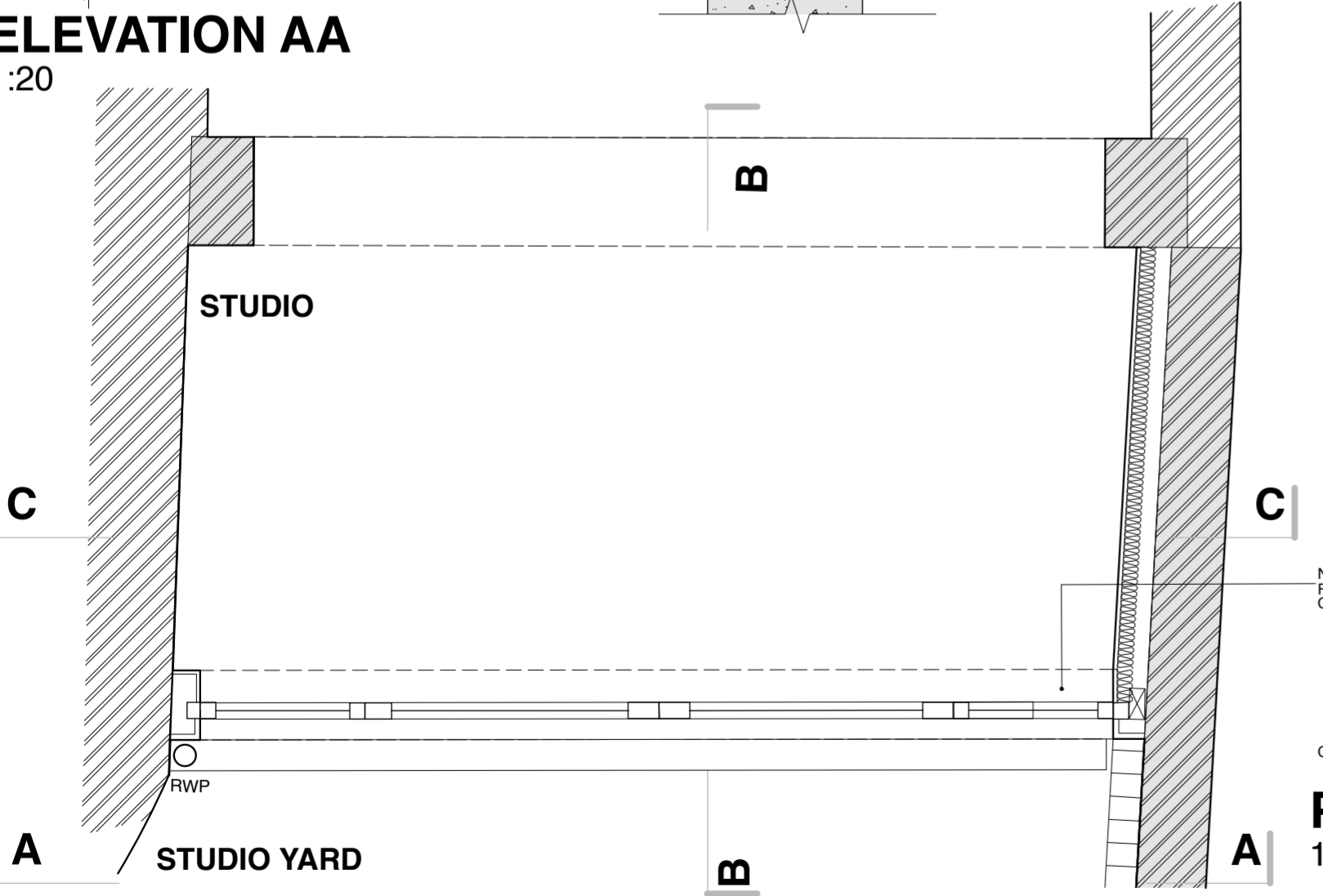
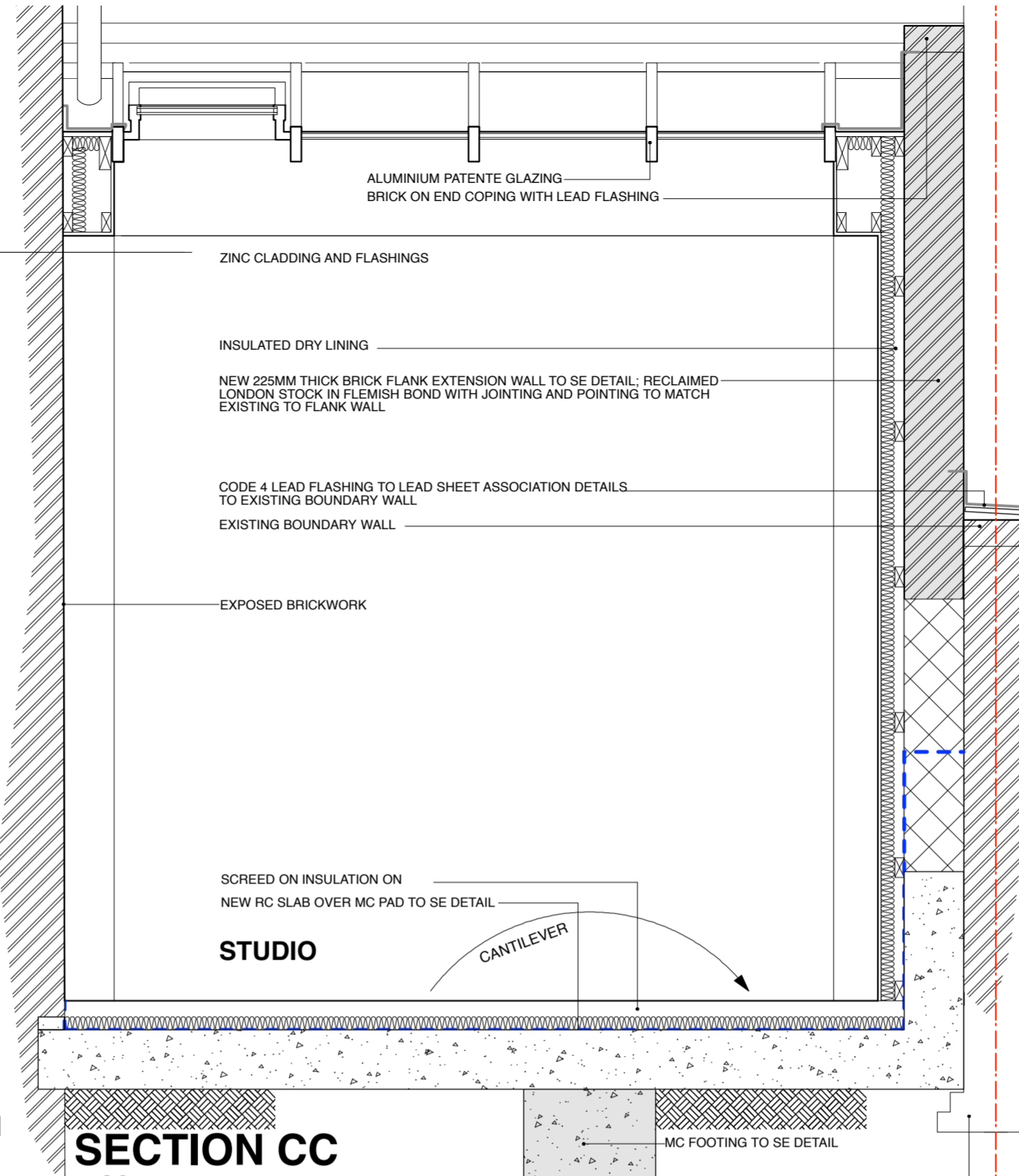




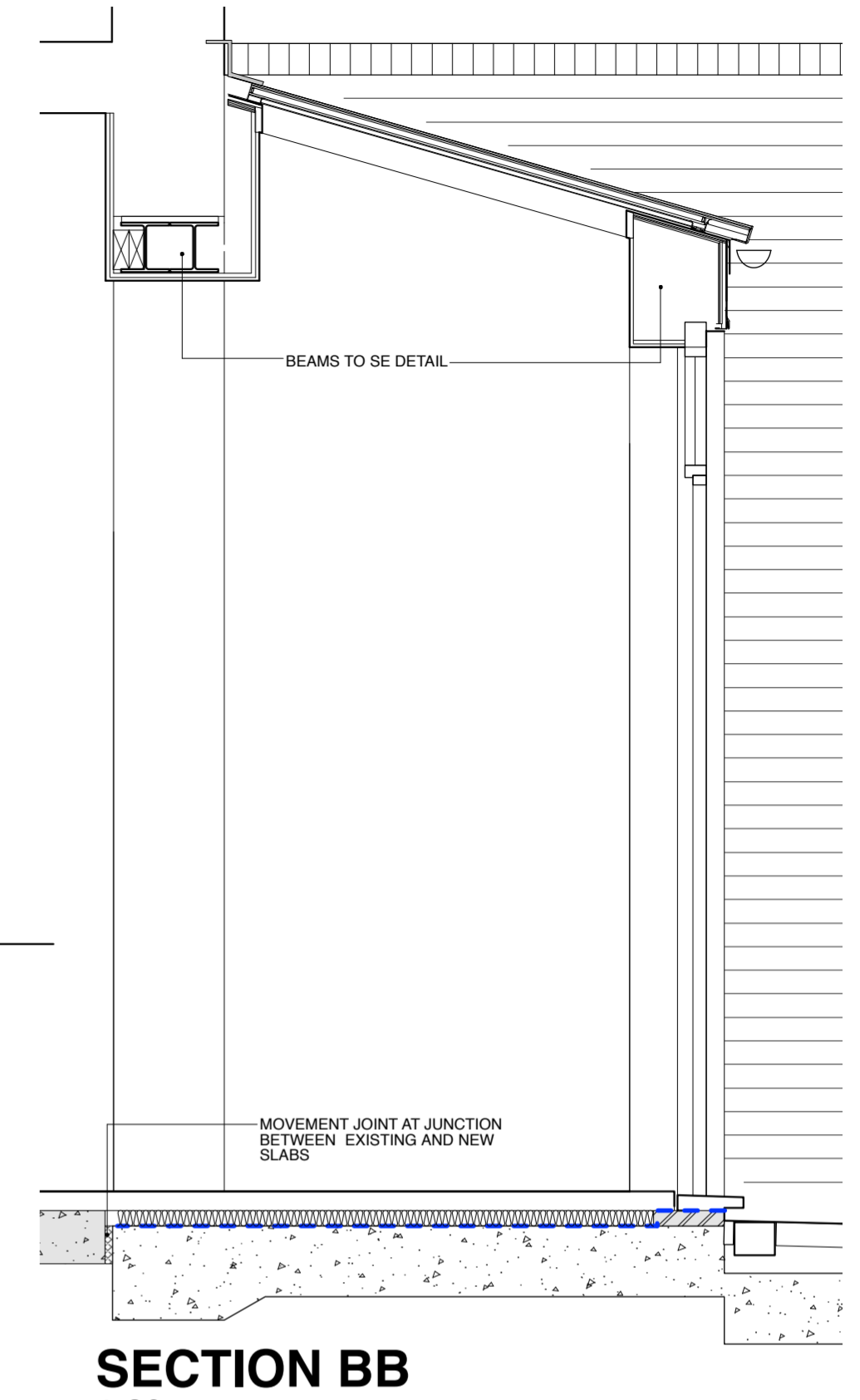
ELEVATION AA
1:20



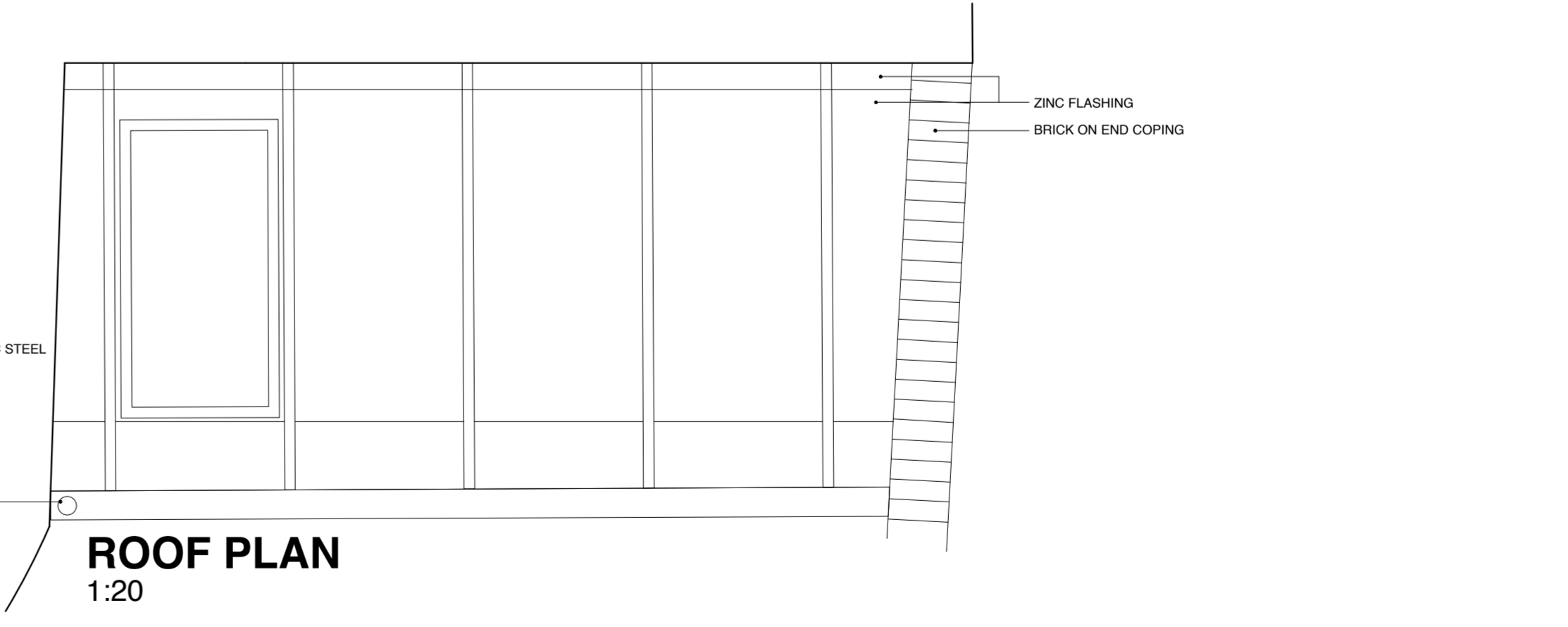
PLAN
1:20



SECTION CC
1:20



SECTION BB
1:20



ROOF PLAN
1:20

NEW STUDIO EXTENSION WITH PPC STEEL
FRAMED GLAZED DOORS
CRITTALL W20 GLAZING SYSTEM

CAST IRON RWP

KEY

	PROPOSED BRICK
	PROPOSED BLOCK
	MASS CONCRETE
	REINFORCED CONCRETE

MORETON HOUSE N6

GROUND FLOOR

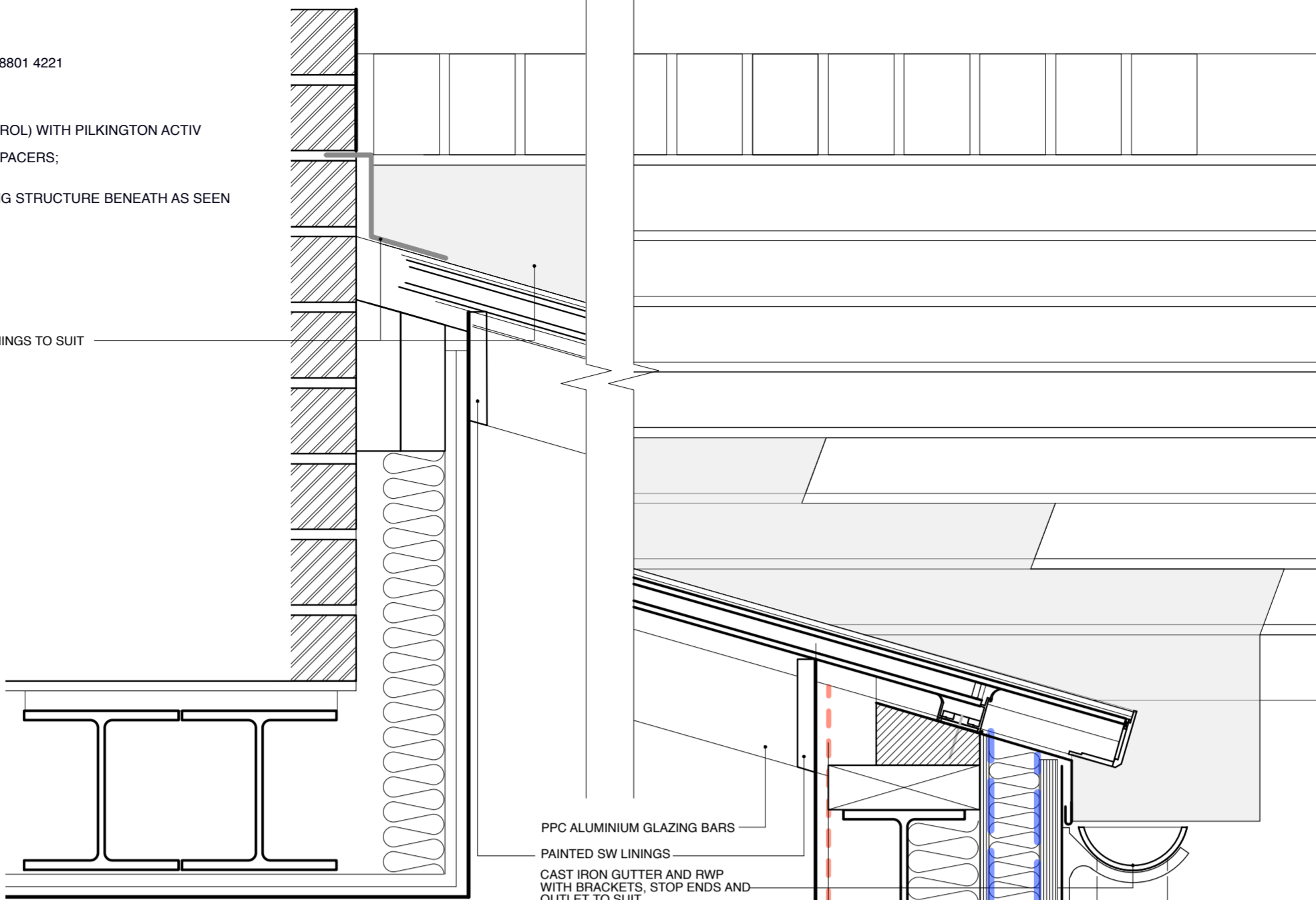
EXTENSION
MRT/DC/002/A
1:20 @ A2
DO NOT SCALE FROM THIS DRAWING REFER ALL DISCREPANCIES TO ARCHITECT

REVISIONS/ ISSUE

28/09/2017	ISSUE TO LIGHTFOOT FOR INFO/ COMMENT
04/10/2017 A	ISSUE TO PLANNING FOR APPROVAL

PATENT GLAZING
U-VALUE: 0.76 W/M2K
 PATENT GLAZING WITH ZINC FLASHINGS
 LONSDALE THERMGUARD INLINE ROOF WINDOW 020 8801 4221
 ALM100/2 GLAZING BARS
 MINIMUM PITCH TO SUIT
 POWDER COATED RAL 9004 SIGNAL BLACK
 DOUBLE GLAZED UNITS:
 OUTER PANE: 6MM TOUGHENED FLOAT (SOLAR CONTROL) WITH PILKINGTON ACTIV
 SELF-CLEANING GLASS;
 VOID: 16MM ARGON FILLED VOID WITH WARM EDGE SPACERS;
 INNER PANE: 6MM TOUGHENED FLOAT WITH LOW
 E-EMISSIVITY;
 1 NO. MANUALLY OPERATED OPENING LIGHT
 SUITABLE BLACK OUT FILM AS REQUIRED CONCEALING STRUCTURE BENEATH AS SEEN
 FROM ABOVE
 VM ANTHRA ZINC FLASHINGS TO TOP EDGE

BLACK ZINC FLASHINGS TO SUIT



PPC ALUMINIUM GLAZING BARS
 PAINTED SW LININGS
 CAST IRON GUTTER AND RWP
 WITH BRACKETS, STOP ENDS AND
 OUTLET TO SUIT

ZINC REVEALS

SCREED ON PIR INSULATION ON
 VAPOUR BARRIER ON NEW SECTION OF
 SLAB TO SEE DETAIL

ACO RAINDRAIN WITH CAST IRON
 COVER

YORK STONE PAVING ON SAND BEDDING
 BRICK RETAINING WALL TO SEE DETAIL

SECTION 1:2

SECTION 1:5

INSULATED DRY LINING

ZINC CLADDING TO
 TIMBER FRAMED PIERS

CRITTALL HOMELIGHT SYSTEM



PLAN 1:2

PLAN 1:5



MORETON HOUSE N6

GROUND FLOOR
EXTENSION CONSTRUCTION DETAIL
M R T / D C / 0 0 3
 1:2.0 @ A 2
 DO NOT SCALE FROM THIS DRAWING REFER ALL DISCREPANCIES TO ARCHITECT

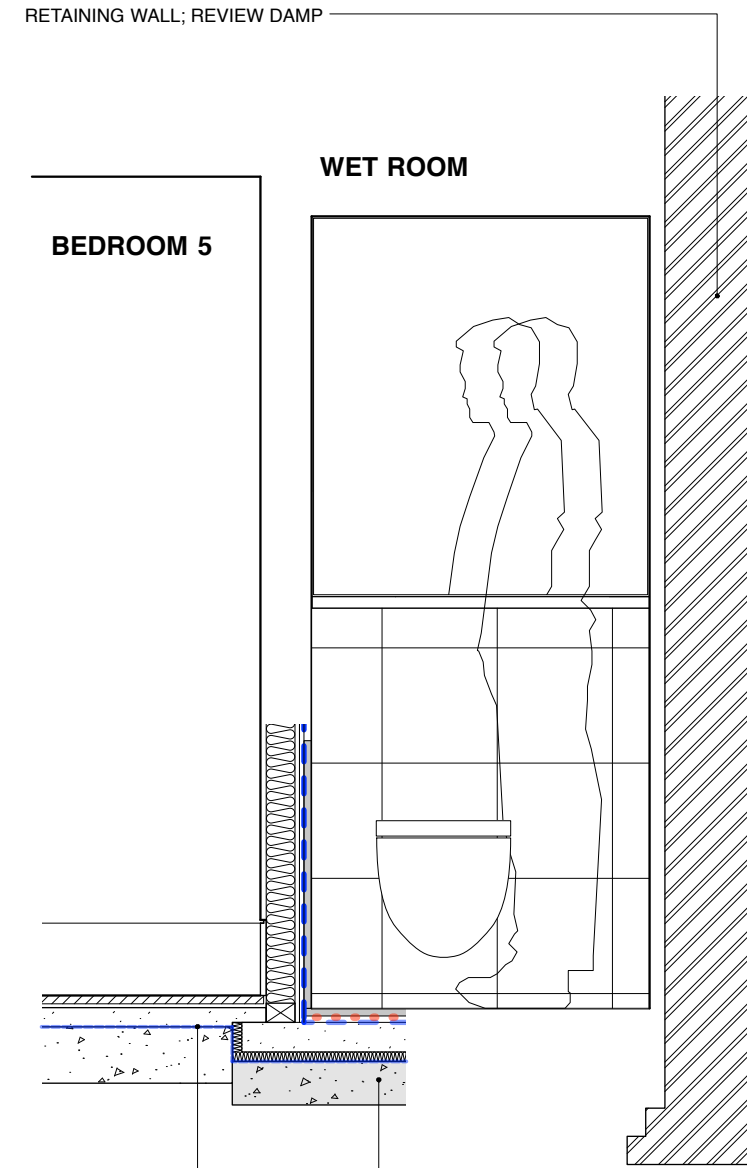
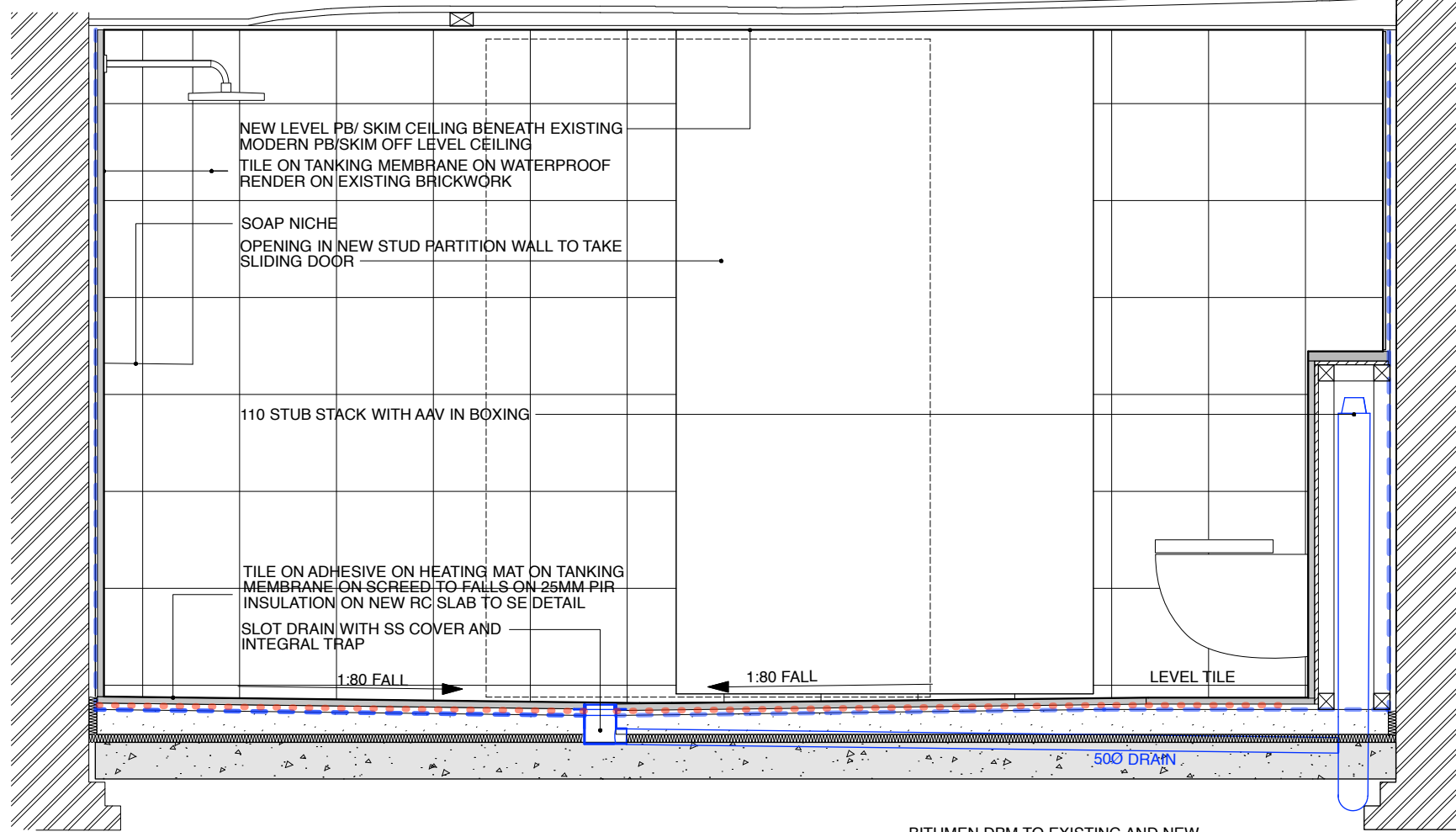
EXISTING BRICK
 PROPOSED BRICK
 PROPOSED BLOCK
 MASS CONCRETE
 1:2.0 @ A 2
 REINFORCED CONCRETE

KEY

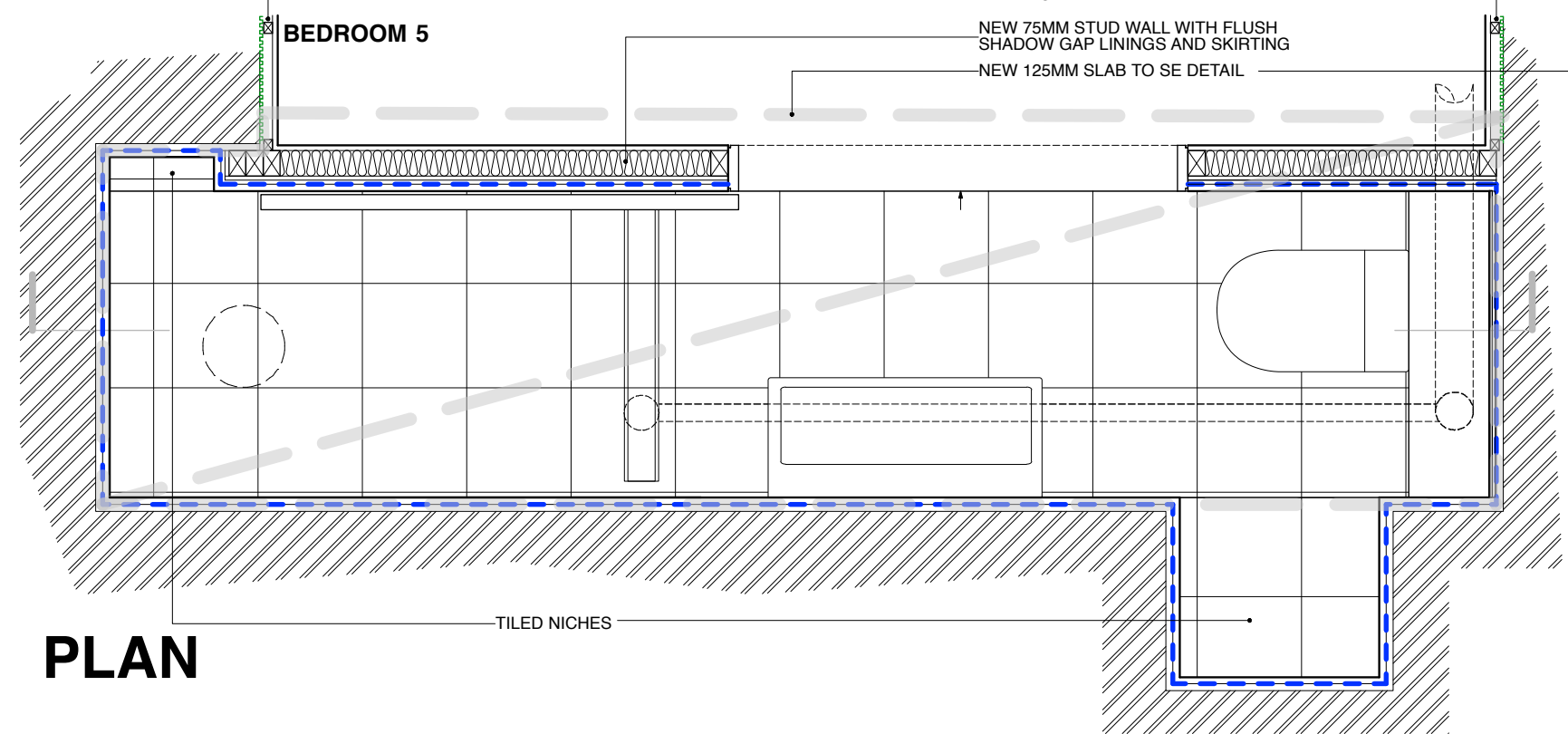
REVISIONS/ISSUE
 04/10/2017 PLANNING
 FOR APPROVAL

Lisa Shell architects
 25, 26, 27, 28, 29, 30, 31, 32, 33, 34, 35, 36, 37, 38, 39, 40, 41, 42, 43, 44, 45, 46, 47, 48, 49, 50, 51, 52, 53, 54, 55, 56, 57, 58, 59, 60, 61, 62, 63, 64, 65, 66, 67, 68, 69, 70, 71, 72, 73, 74, 75, 76, 77, 78, 79, 80, 81, 82, 83, 84, 85, 86, 87, 88, 89, 90, 91, 92, 93, 94, 95, 96, 97, 98, 99, 100
 www.lisashellarchitects.co.uk

LONG SECTION



X SECTION



PLAN

MORETON HOUSE N6

BASEMENT WETROOM AS PROPOSED

MRT/DC/005

1:10 @ A3

DO NOT SCALE FROM THIS DRAWING

REFER ALL DISCREPANCIES TO ARCHITECT

NEW CONCRETE

EXISTING CONCRETE

KEY

REVISIONS/ ISSUE

04/10/2017

ISSUE TO PLANNING FOR APPROVAL

PLEASE USE SCALE BAR TO TAKE MEASUREMENTS WHEN READING FROM PDFS

Lisa Shell Architects

EDGE Noosey Street 281 Harford Road, N1 5QT

T: 0203 7729 7729 E: info@lisashellarchitects.co.uk

www.lisashellarchitects.co.uk

Chartered Architects Registered in England No. 5328888

Registration No. 5328888/2004/00000000/00000000/00000000/00000000