

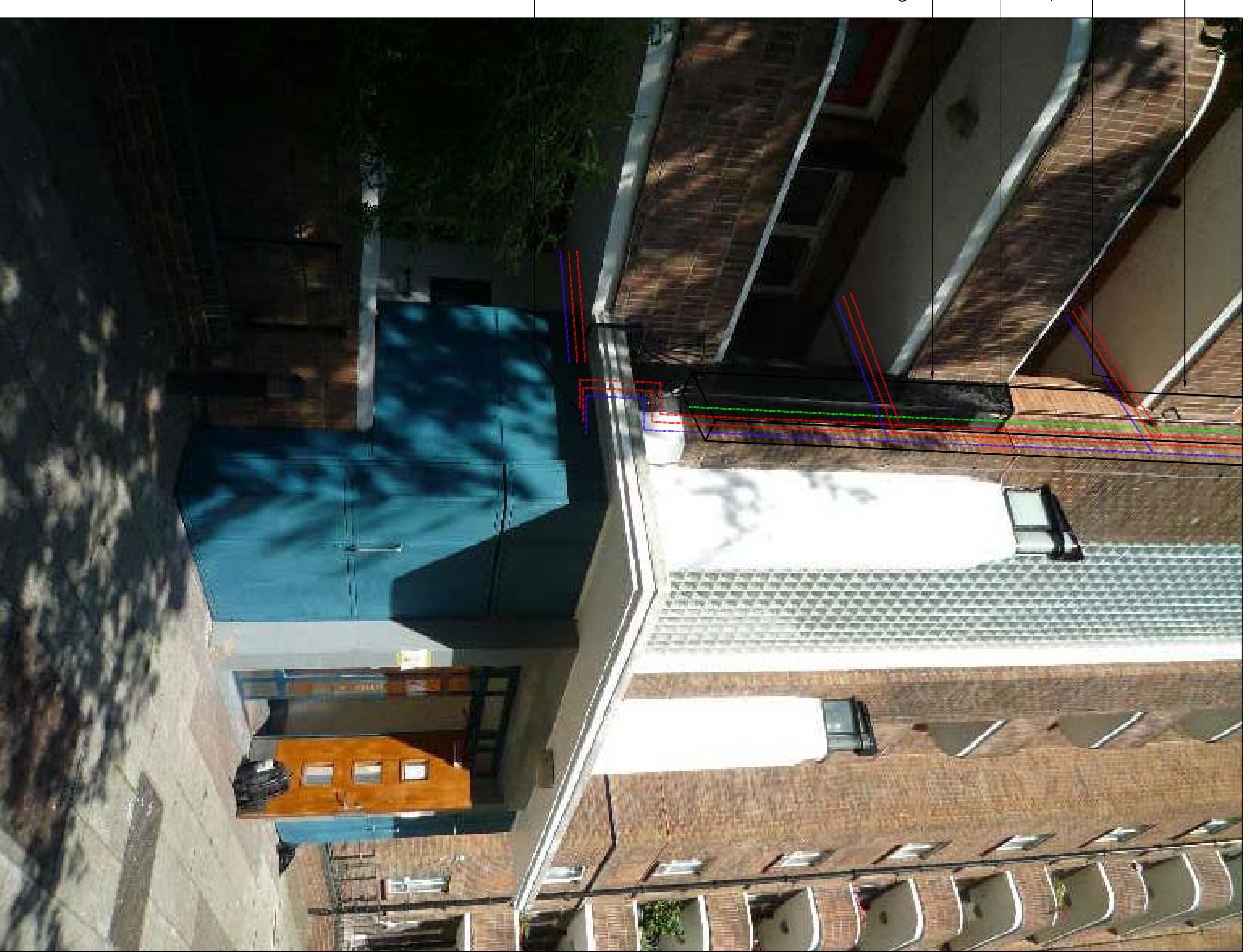
SERVICE PIPES RISE TO TOP FLOOR

200 PFC RAIL & 200 SCINS FULLY CONCEALED IN PIPE CASING (400MM FINISHED TO SIFT ADJACENT FLOOR) (MINI'S CONCRETE 150MM) 200 SCINS 400 (110 x 90mm) EXISTING GAS

600x200 PIPE CONCEALMENT WEATHERPROOF CASING FINISHED TO SIFT ADJACENT BUILDING FABRIC (PREFERED BRICKWORK)

PRESS EXIT IN ENCLOSURE AT HL (600x200)

GOLDINGTON ESTATE
PROPOSED SERVICES PIPE
CONCEALMENT RIGHT HAND SIDE
OF COMMON STAIRWELL - TYPICAL
(1:12 CELL HRODS)



SERVICE PIPES RISE TO TOP FLOOR

200 PFC RAIL & 200 SCINS FULLY CONCEALED IN PIPE CASING (400MM FINISHED TO SIFT ADJACENT FLOOR) (MINI'S CONCRETE 150MM) 200 SCINS 400 (110 x 90mm) EXISTING GAS

600x200 PIPE CONCEALMENT WEATHERPROOF CASING FINISHED TO SIFT ADJACENT BUILDING FABRIC (PREFERED BRICKWORK) CONCRETE EXISTING GAS PIPE AND REPLACEMENT HIGH PIPES AND SCINS

PRESS EXIT IN ENCLOSURE AT HL (600x200)

GOLDINGTON ESTATE
PROPOSED SERVICES PIPE
CONCEALMENT LEFT HAND SIDE OF
COMMON STAIRWELL - TYPICAL
(1:12 CELL HRODS)



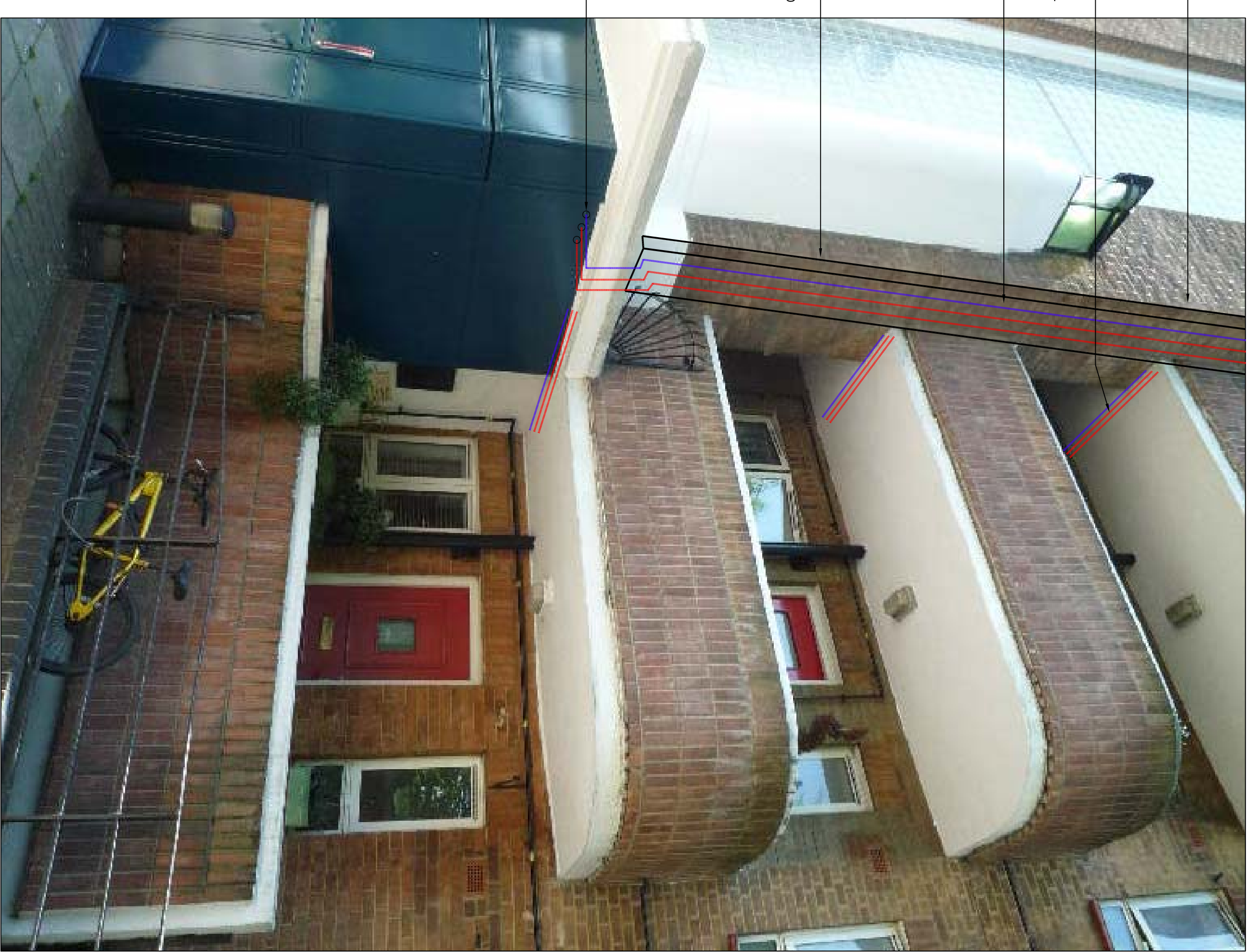
SERVICE PIPES RISE TO TOP FLOOR

200 PFC RAIL & 200 SCINS FULLY CONCEALED IN PIPE CASING (400MM FINISHED TO SIFT ADJACENT FLOOR) (MINI'S CONCRETE 150MM) 200 SCINS 400 (110 x 90mm)

600x200 PIPE CONCEALMENT WEATHERPROOF CASING FINISHED TO SIFT ADJACENT BUILDING FABRIC (PREFERED BRICKWORK)

PRESS EXIT IN ENCLOSURE AT HL (600x200)

GOLDINGTON ESTATE
PROPOSED SERVICES PIPE
CONCEALMENT LEFT HAND SIDE OF
COMMON STAIRWELL - TYPICAL
(1:12 CELL HRODS)



SERVICE PIPES RISE TO TOP FLOOR

200 PFC RAIL & 200 SCINS FULLY CONCEALED IN PIPE CASING (400MM FINISHED TO SIFT ADJACENT FLOOR) (MINI'S CONCRETE 150MM) 200 SCINS 400 (110 x 90mm)

600x200 PIPE CONCEALMENT WEATHERPROOF CASING FINISHED TO SIFT ADJACENT BUILDING FABRIC (PREFERED BRICKWORK)

PRESS EXIT IN ENCLOSURE AT HL (600x200)

GOLDINGTON ESTATE
PROPOSED SERVICES PIPE
CONCEALMENT RIGHT HAND SIDE
OF COMMON STAIRWELL - TYPICAL
(1:12 CELL HRODS)

PLANNING DRAWING

Client: **Camden**
ARGYLE STREET
LONDON
WC1H 9NU

Medical and Electrical Consulting Engineers
1st Floor, 34-42 Station Road East, Cusick, Canary Wharf, QMG
Telephone 01853 71772 Fax 01853 71774
Website www.dym.co.uk Email enquiries@dym.co.uk

Project: GOLDINGTON ESTATE
HEATING & DOMESTIC WATER SERVICES
REFURBISHMENT

Drawing Title: PLANNING DRAWING
TYPICAL PIPE CONCEALMENT DETAILS (VARIOUS)

Scale: N.T.S.	Sheet: 40
Drawn: NS	Checked: PHE
Drawn Date: OCT 17	Drawn Date: 18/10
Drawn No: 2895-BYAM-203	Drawn No: 2895-BYAM-203