

Edge parapet +105775

Eighth FFL +101660

Seventh FFL +99435

Sixth FFL (Block C) +95210

Fifth FFL (Block A) +91985

Fourth FFL +88760

Third FFL (Block D) +85535

Second FFL +82310

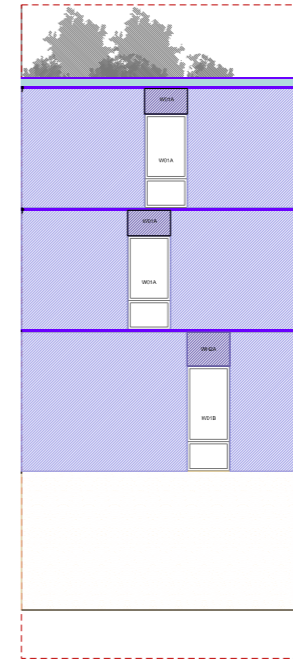
First FFL +79085

Ground FFL +75350

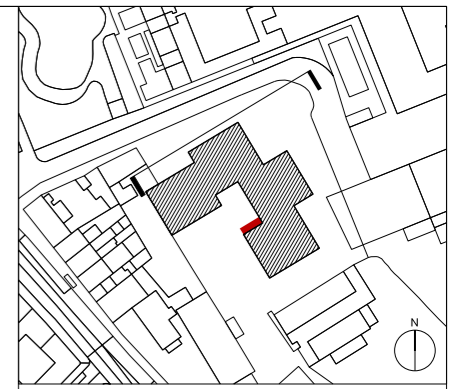
Basement 1 FFL +71800

Typical Basement 2 FFL +68260

Car Park FFL +67850



Section DD  
(see key map)



- Elevation part of section DD
- Key, Cladding types
- Cladding type 1: Special brick refer to F10
  - Cladding type 2: Standard brick refer to F10
  - Cladding type 3: Chamfer panels refer to F10
  - Cladding type 4: Precast concrete panels refer to H42
  - Brick chamfer lintel for cladding type 2 refer to F10
  - Precast concrete sill-coping refer to H42
  - Special brick lintels - Cladding type 1 refer to F10
  - Standard brick lintels - Cladding type 2 refer to F10
  - Special precast concrete sill at lower GF refer to H42
  - Precast concrete Parapet refer to H42
  - HVAC Exhaust Grille. Bespoke grills; 2bricks size max. Location only indicative. Final location to be developed with M&E trade contractor. To be positioned a minimum of 2 bricks from window/door openings. Never to be placed within chamfers or lintels.
  - External Louvres. Refer to louvre schedule refer to L13

Notes:

ALL MEASUREMENTS TO BE CONFIRMED ON SITE.

Drawings to be read in conjunction with :

- Architects' (01) Series GAs
- Architects' specifications
- Architects' (21) Series - External walls
- Architects' (31) Series - Windows

revision	date	
A	16.08.10	Minor adjustments to key
/	15.07.01	First Issue

**DUGGAN MORRIS ARCHITECTS**  
 Duggan Morris Architects Ltd  
 Unit 7, 16-24 Underwood street, London, N1 7JQ  
 Telephone 020 7566 7440  
 www.dugganmorrisarchitects.com

- Do not scale from this drawing  
 - All dimensions to be checked on site by the Contractor  
 - And such dimensions to be their responsibility  
 - Report all drawing errors and omissions to the Architect  
 - All dimensions in millimeters unless noted otherwise  
 - If in doubt ask Contract Administrator

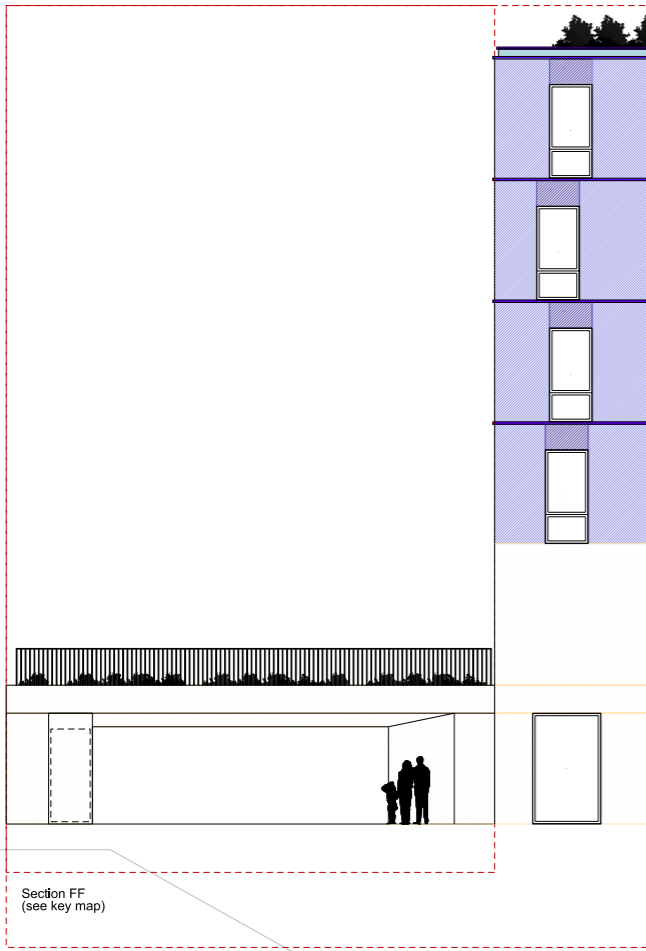
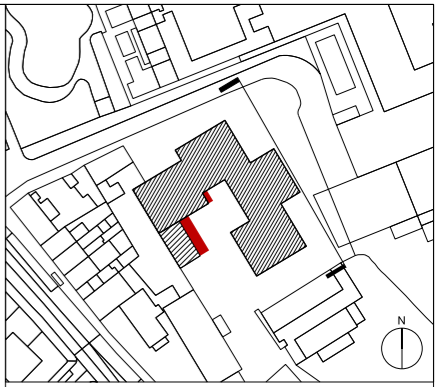
job title  
 HAMPSTEAD GREEN

drawing title/location  
 CLADDING KEY: NORTH ELEVATION

status TENDER

scale 1:100 @ A1 1:200 @ A3

job no	source	zone	element	drawing no.	revision
A213	A		(21)	201	A



Section BB  
(see key map)

Section FF  
(see key map)

- Fourth FFL (Block A) +88760
- Third FFL (Block D) +85535
- Second FFL +82310
- First FFL +79085
- Ground FFL +75350
- Basement 1 FFL +71800



Section FF

Section BB

- Key, Cladding types
- Cladding type 1: Special brick refer to F10
  - Cladding type 2: Standard brick refer to F10
  - Cladding type 3: Chamfer panels refer to F10
  - Cladding type 4: Precast concrete panels refer to H42
  - Brick chamfer lintel for cladding type 2 refer to F10
  - Precast concrete sill-coping refer to H42
  - Special brick lintels - Cladding type 1 refer to F10
  - Standard brick lintels - Cladding type 2 refer to F10
  - Special precast concrete sill at lower GF refer to H42
  - Precast concrete Parapet refer to H42

- HVAC Exhaust Grille. Bespoke grilles; 2bricks size max. Location only indicative. Final location to be developed with M&E trade contractor. To be positioned a minimum of 2 bricks from window/door openings. Never to be placed within chamfers or lintels.
- External Louvres. Refer to louvre schedule refer to L13

Notes:  
ALL MEASUREMENTS TO BE CONFIRMED ON SITE.  
Drawings to be read in conjunction with:  
- Architects' (01) Series GAs  
- Architects' specifications  
- Architects' (21) Series - External walls  
- Architects' (31) Series - Windows

- Edge parapet +10276
- Eighth FFL +101660
- Seventh FFL +98435
- Sixth FFL (Block A) +95210
- Fifth FFL (Block A) +91985
- Fourth FFL +88760
- Third FFL (Block D) +85535
- Second FFL +82310
- First FFL +79085
- Ground FFL +75350
- Basement 1 FFL +71800
- Typical Basement 2 FFL +6250

+80190

School flat roof level +80230

School outbuilding FFL +75030

School playground FFL +74570

**DUGGAN MORRIS ARCHITECTS**  
Duggan Morris Architects Ltd  
Unit 7, 16-24 Underwood Street, London, N1 7JQ  
Telephone 020 7586 7440  
www.dugganmorrisarchitects.com

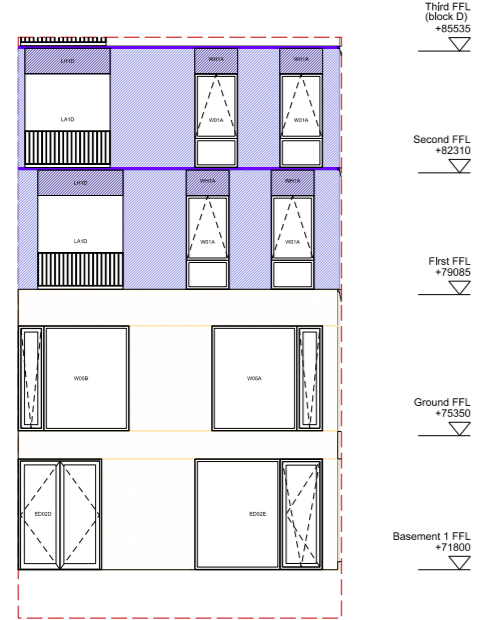
- Do not scale from this drawing  
- All dimensions to be checked on site by the Contractor  
- The Contractor shall be responsible for all drawing errors and omissions to the Architect  
- All dimensions in millimeters unless noted otherwise  
- If in doubt ask Contract Administrator

job title  
**HAMPSTEAD GREEN**

drawing title/location

status TENDER  
scale 1:100 @ A1 1:200 @ A3

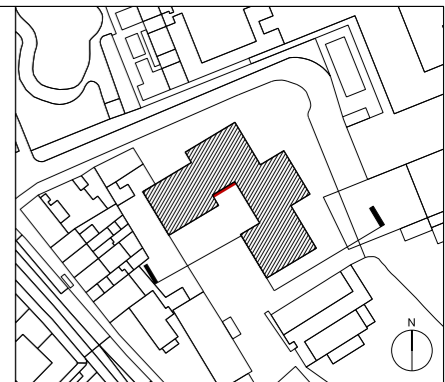
job no	source	zone	element	drawing no.	revision
A213	A		(21)	2 02	A



Section CC (see key map)



Section CC



Elevation part of section CC

- Key, Cladding types
- Cladding type 1: Special brick refer to F10
  - Cladding type 2: Standard brick refer to F10
  - Cladding type 3: Chamfer panels refer to F10
  - Cladding type 4: Precast concrete panels refer to H42
  - Brick chamfer lintel for cladding type 2 refer to F10
  - Precast concrete sill-coping refer to H42
  - Special brick lintels - Cladding type 1 refer to F10
  - Standard brick lintels - Cladding type 2 refer to F10
  - Special precast concrete sill at lower GF refer to H42
  - Precast concrete Parapet refer to H42
- HVAC Exhaust Grille. Bespoke grilles; 2bricks size max. Location only indicative. Final location to be developed with M&E trade contractor. To be positioned a minimum of 2 bricks from window/door openings. Never to be placed within chamfers or lintels.
- External Louvres. Refer to louvre schedule refer to L13

Notes:  
 ALL MEASUREMENTS TO BE CONFIRMED ON SITE.  
 Drawings to be read in conjunction with :  
 - Architects' (01) Series GAs  
 - Architects' specifications  
 - Architects' (21) Series - External walls  
 - Architects' (31) Series - Windows

16.08.10	Minor adjustment to key
15.07.01	First Issue
revision	date

**DUGGAN MORRIS ARCHITECTS**  
 Duggan Morris Architects Ltd  
 Unit 7, 16-24 Underwood street, London, N1 7JQ  
 Telephone 020 7566 7440  
 www.dugganmorrisarchitects.com

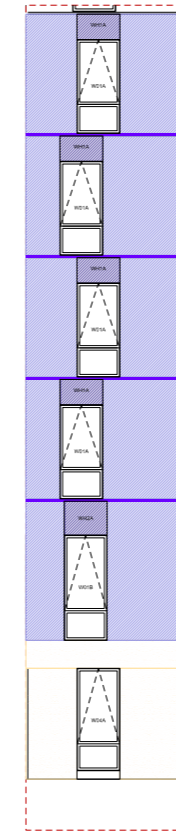
- Do not scale from this drawing
- All dimensions to be checked on site by the Contractor
- And such dimensions to be their responsibility
- Report all drawing errors and omissions to the Architect
- All dimensions in millimeters unless noted otherwise
- If in doubt ask Contract Administrator

job title  
 HAMPSTEAD GREEN

drawing title/location  
 CLADDING KEY: ELEVATION SOUTH

status	TENDER
scale	1:100 @ A1 1:200 @ A3

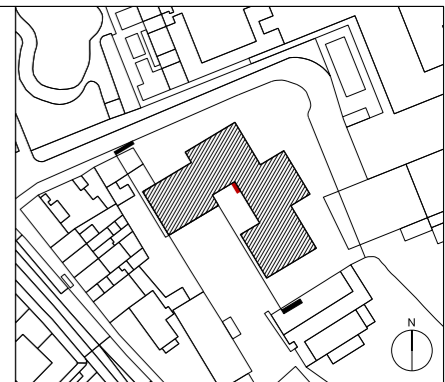
job no	source	zone	element	drawing no.	revision
A213	A		(21)	2 03	A



Section AA

- Fifth FFL (block A) +91985
- Fourth FFL (block A) +88760
- Third FFL (block D) +85535
- Second FFL +82310
- First FFL +79085
- Ground FFL +75350
- Basement 1 FFL +71800

- Edge parapet +105775
- Eighth FFL +101660
- Seventh FFL +98435
- Sixth FFL (block C) +95210
- Fifth FFL (block A) +91985
- Fourth FFL +88760
- Third FFL (block D) +85535
- Second FFL +82310
- First FFL +79085
- Ground FFL +75350
- Basement 1 FFL +71800
- Swimming pool top +7060
- Typical Basement 2 FFL +66250
- Car Park FFL +67750



Elevation part of section AA

- Key, Cladding types**
- Cladding type 1: Special brick refer to F10
  - Cladding type 2: Standard brick refer to F10
  - Cladding type 3: Chamfer panels refer to F10
  - Cladding type 4: Precast concrete panels refer to H42
  - Brick chamfer lintel for cladding type 2 refer to F10
  - Precast concrete sill-cooping refer to H42
  - Special brick lintels - Cladding type 1 refer to F10
  - Standard brick lintels - Cladding type 2 refer to F10
  - Special precast concrete sill at lower GF refer to H42
  - Precast concrete Parapet refer to H42
  - HVAC Exhaust Grille. Bespoke grills; 2bricks size max. Location only indicative. Final location to be developed with M&E trade contractor. To be positioned a minimum of 2 bricks from window/door openings. Never to be placed within chamfers or lintels.
  - External Louvres. Refer to louvre schedule refer to L13

**Notes:**  
 ALL MEASUREMENTS TO BE CONFIRMED ON SITE.  
 Drawings to be read in conjunction with :  
 - Architects' (01) Series GAs  
 - Architects' specifications  
 - Architects' (21) Series - External walls  
 - Architects' (31) Series - Windows

A	16.08.10	Minor adjustment to key
/	15.07.01	First Issue
revision	date	

**DUGGAN MORRIS ARCHITECTS**  
 Duggan Morris Architects Ltd  
 Unit 7, 16-24 Underwood street, London, N1 7JQ  
 Telephone 020 7566 7440  
 www.dugganmorrisarchitects.com

- Do not scale from this drawing  
 - All dimensions to be checked on site by the Contractor  
 - And such dimensions to be their responsibility  
 - Report all drawing errors and omissions to the Architect  
 - All dimensions in millimeters unless noted otherwise  
 - If in doubt ask Contract Administrator

job title  
 HAMPSTEAD GREEN

drawing title/location  
 CLADDING KEY: ELEVATION WEST

status  
 TENDER

scale  
 1:100 @ A1      1:200 @ A3

job no	source	zone	element	drawing no.	revision
A213	A		(21)	204	A

**DO NOT SCALE !!**

**SEE SPECIFICATION DRAWING FOR SPEC.**

**IMPORTANT NOTES** (THE RECIPIENT WILL BE DEEMED TO HAVE COGNISANCE AND ACCEPTANCE OF ALL THESE NOTES)  
THIS DRAWING MUST BE CHECKED BY THE CLIENT, HIS AGENT OR THE MAIN CONTRACTOR AND APPROVED IN WRITING. ANY SUBSEQUENT WRITTEN INSTRUCTION TO MANUFACTURE (INCLUDING 'NO COMMENT') SHALL CONSTITUTE APPROVAL. MANUFACTURE CANNOT COMMENCE UNTIL APPROVED. THEREAFTER THE CLIENT OR THE MAIN CONTRACTOR WILL BE LIABLE FOR ANY ADDITIONAL EXPENSES INCURRED BY THE MANUFACTURER AND THEIR AGENTS FOR ANY ALTERATION TO THE DESIGN DETAIL OR LAYOUT REQUESTED BY THEM.

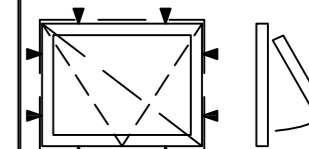
**CDM REGULATIONS DESIGN RISK ASSESSMENT** ▲  
THE SIZE AND SHAPE OF INDIVIDUAL UNITS FOR THIS PROJECT HAVE BEEN DESIGNED TO SATISFY THE OVERALL DESIGN REQUIREMENTS FOR THE BUILDING. ALL PERSONS HANDLING AND INSTALLING SUCH UNITS SHOULD BE AWARE THAT THERE ARE RISKS ASSOCIATED WITH THIS TYPE OF WORK THAT CANNOT BE DESIGNED OUT.  
**RISK REDUCTION:** FIXERS MUST BE SUITABLY EXPERIENCED IN THE HANDLING OF WINDOWS AND DOORS AND EMPLOY LIFTING METHODS APPROPRIATE TO THE SIZE AND SHAPE OF THE UNITS. ACCESS AND WORKING PLATFORMS MUST BE TO THE STANDARD REQUIRED BY CURRENT LEGISLATION. REFERENCE MUST ALWAYS BE MADE TO COSSH INFORMATION FOR THE MATERIALS BEING USED.

**Fixing Positions:**

Fixing positions noted thus: ▼

Standard recommended locations are 150mm from each end and each mullion, then @ 450-600mm centres.

Note :  
Arrow points to handle and diagonal slash shows frame size



rev4.	description4.	date4.
rev3.	description3.	date3.
C1	ISSUED FOR CONSTRUCTION	11.01.17
P1	ISSUED AT PRELIMINARY STATUS.	11.11.16
REV	DESCRIPTION	DATE

**Architect**  
Duggan Morris Architects Ltd, Unit 7,  
16-24 Underwood St, London, N1 7JQ  
Tel : 020 7566 7440

**Contractor**  
Stanta, Endeavour House, Coopers End Road,  
Stanstead, Essex, CM24 1SJ  
Tel : 0127 982 1695

**Project**  
HAMPSTEAD GREEN - BLK D

**Title**  
WINDOW SCHEDULE -  
Type W01A

Drawn By	EADS	Date	11/2016
Scale	1:20 @ A3	Checked By	CG / ic
Contract No.	144831	Drawing No.	D110

**CONSTRUCTION ISSUE**

Architect Drgs:	A213-(31)-(801-814)
Arch Ref/Schedule:	W01A
Est No. 01	Total Quantity: 16
Note: # # # # # #	

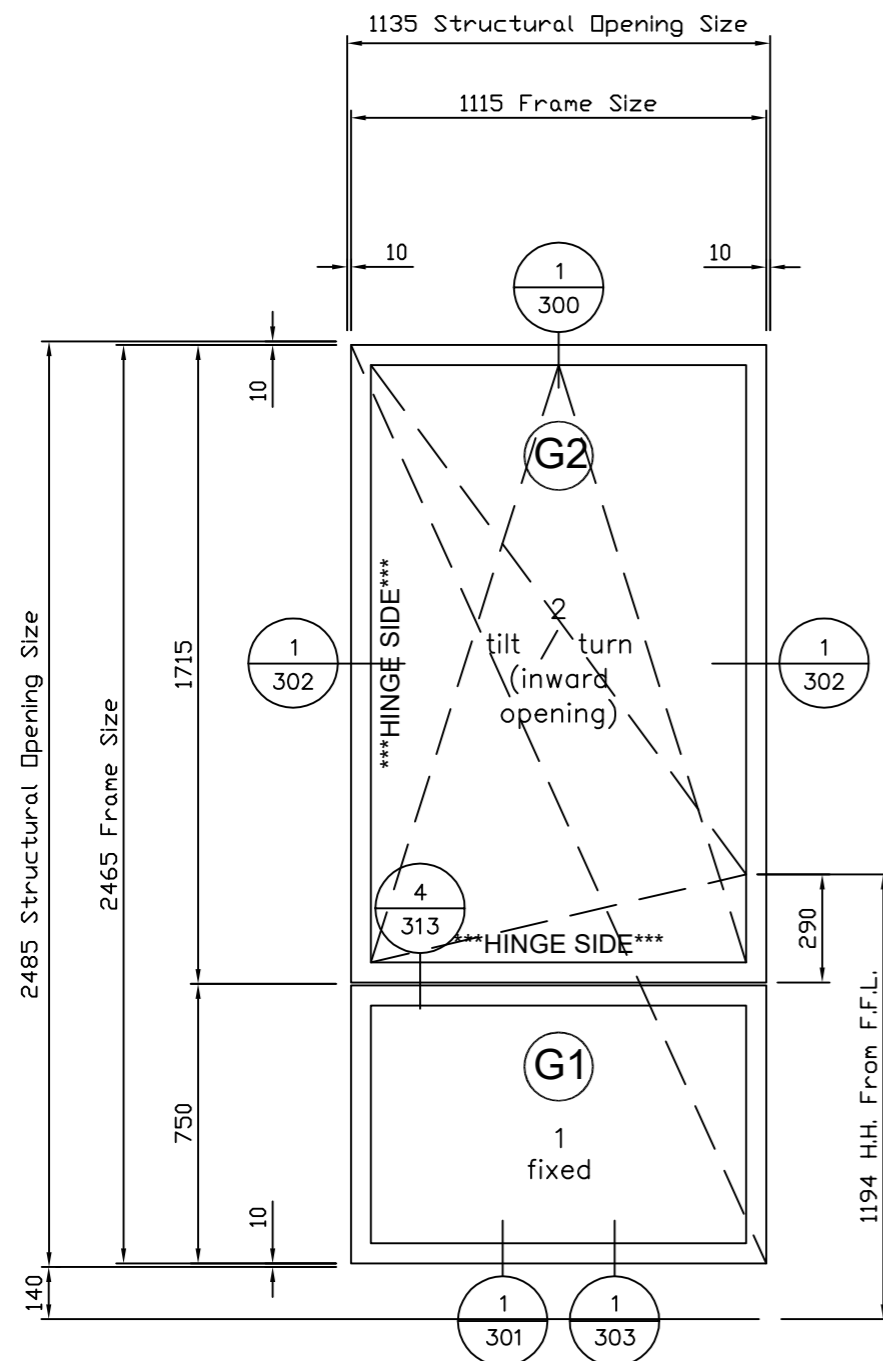
Location: Block D				
LEVEL:	N	E	S	W
LG.:				
Grd.:				
1st.:	1	2	2	3
2nd.:	1	2	2	3
3rd.:				
4th.:				
5th.:				
6th.:				
7th.:				
8th.:				
TOTAL.:	2	4	4	6

WINDOW TYPE:  
W01A

Frame W01A (Futura+i 149mm Main Frame)  
16 No Req'd As Drawn.

- G1** - 6mm Suncool 70/40 outer pane
- 16mm argon filled cavity 'warm edge'
- 6.4mm Clear LAM inner pane

- G2** - 6mm Suncool 70/40 outer pane
- 18mm argon filled cavity 'warm edge'
- 4mm Clear inner pane



**INSTALLERS WINDOW REF:**  
WEST - 1-D-01, 02 & 03  
          2-D-01, 02 & 03  
SOUTH - 1-D-06 & 08  
          2-D-06 & 07  
EAST - 1-D-10 & 13  
          2-D-11 & 13  
NORTH - 1-D-14  
          2-D-14

**DO NOT SCALE !!**

**SEE SPECIFICATION DRAWING FOR SPEC.**

**IMPORTANT NOTES** (THE RECIPIENT WILL BE DEEMED TO HAVE COGNISANCE AND ACCEPTANCE OF ALL THESE NOTES)  
THIS DRAWING MUST BE CHECKED BY THE CLIENT, HIS AGENT OR THE MAIN CONTRACTOR AND APPROVED IN WRITING. ANY SUBSEQUENT WRITTEN INSTRUCTION TO MANUFACTURE (INCLUDING 'NO COMMENT') SHALL CONSTITUTE APPROVAL. MANUFACTURE CANNOT COMMENCE UNTIL APPROVED. THEREAFTER THE CLIENT OR THE MAIN CONTRACTOR WILL BE LIABLE FOR ANY ADDITIONAL EXPENSES INCURRED BY THE MANUFACTURER AND THEIR AGENTS FOR ANY ALTERATION TO THE DESIGN DETAIL OR LAYOUT REQUESTED BY THEM.

**CDM REGULATIONS**  
DESIGN RISK ASSESSMENT

THE SIZE AND SHAPE OF INDIVIDUAL UNITS FOR THIS PROJECT HAVE BEEN DESIGNED TO SATISFY THE OVERALL DESIGN REQUIREMENTS FOR THE BUILDING. ALL PERSONS HANDLING AND INSTALLING SUCH UNITS SHOULD BE AWARE THAT THERE ARE RISKS ASSOCIATED WITH THIS TYPE OF WORK THAT CANNOT BE DESIGNED OUT.

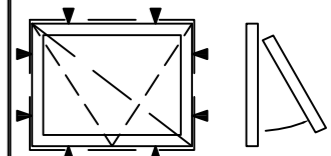
**RISK REDUCTION:**  
FIXERS MUST BE SUITABLY EXPERIENCED IN THE HANDLING OF WINDOWS AND DOORS AND EMPLOY LIFTING METHODS APPROPRIATE TO THE SIZE AND SHAPE OF THE UNITS. ACCESS AND WORKING PLATFORMS MUST BE TO THE STANDARD REQUIRED BY CURRENT LEGISLATION. REFERENCE MUST ALWAYS BE MADE TO COSSH INFORMATION FOR THE MATERIALS BEING USED.

**Fixing Positions:**

Fixing positions noted thus: ▼

Standard recommended locations are 150mm from each end and each mullion, then @ 450-600mm centres.

Note :  
Arrow points to handle and diagonal slash shows frame size



rev4.	description4.	date4.
C2	UPDATED TO INCLUDE FUTURA+ FRAME PROFILE. RE-ISSUED FOR CONSTRUCTION.	30.01.17
C1	UPDATED TO DMA & EOC COMMENTS WHERE APPLICABLE AND ISSUED FOR CONSTRUCTION.	24.01.17
P1	ISSUED AT PRELIMINARY STATUS.	11.11.16

REV	DESCRIPTION	DATE
-----	-------------	------

**Architect**  
Duggan Morris Architects Ltd, Unit 7,  
16-24 Underwood St, London, N1 7JQ  
Tel : 020 7566 7440

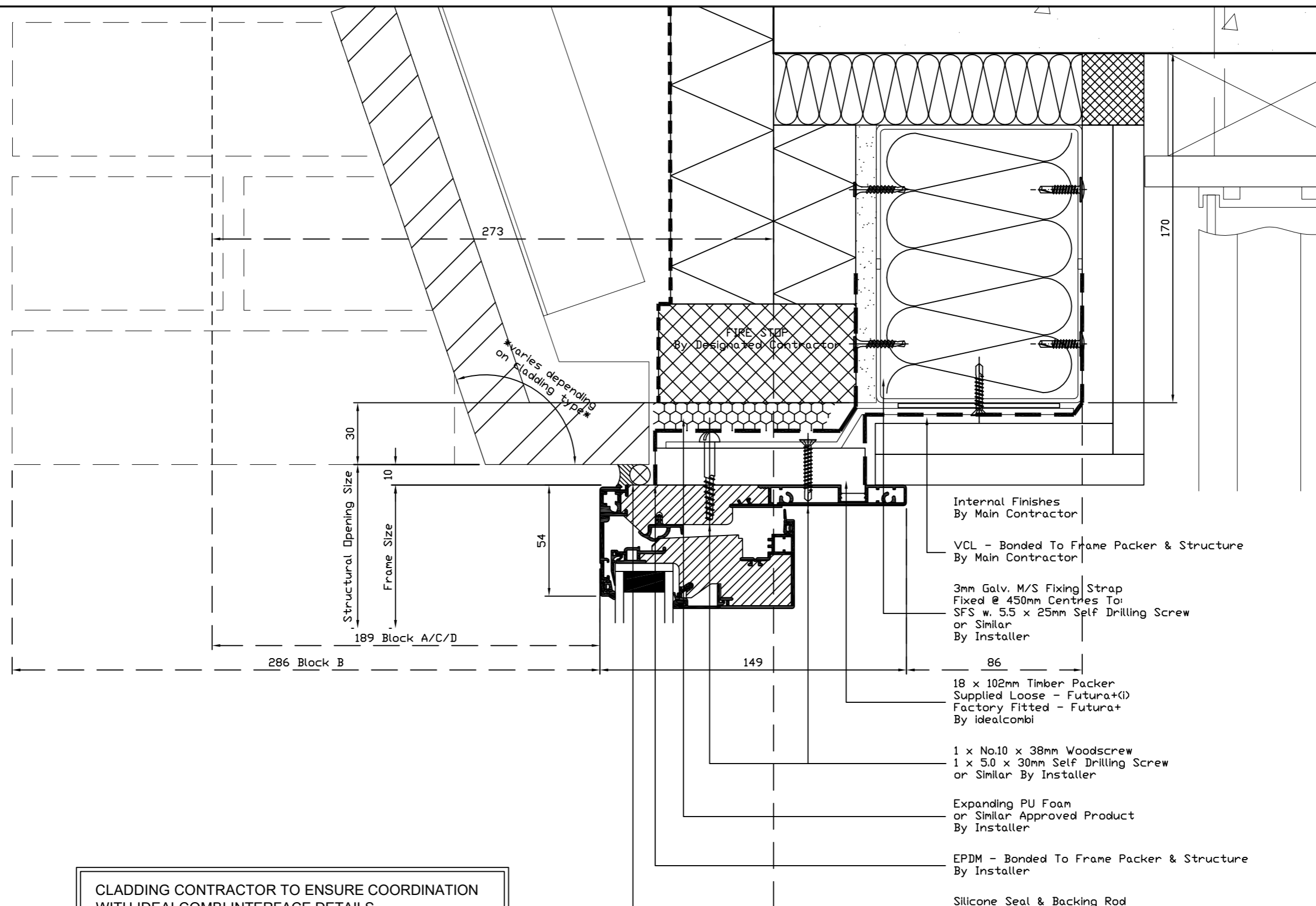
**Contractor**  
Stanta, Endeavour House, Coopers End Road,  
Stanstead, Essex, CM24 1SJ  
Tel : 0127 982 1695

**Project**  
HAMPSTEAD GREEN

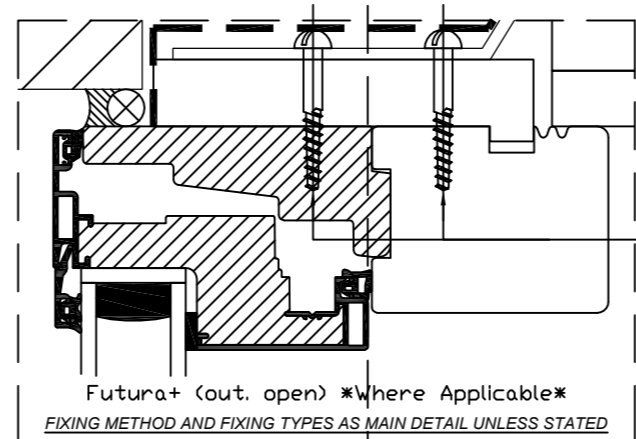
**Title**  
WINDOW DETAIL - HEAD  
(CLADDING TYPE 2 & 3)

Drawn By	EADS	Date	11/2016
Scale	1:2 @ A3	Checked By	CG / ic
Contract No.	144831	Drawing No.	300

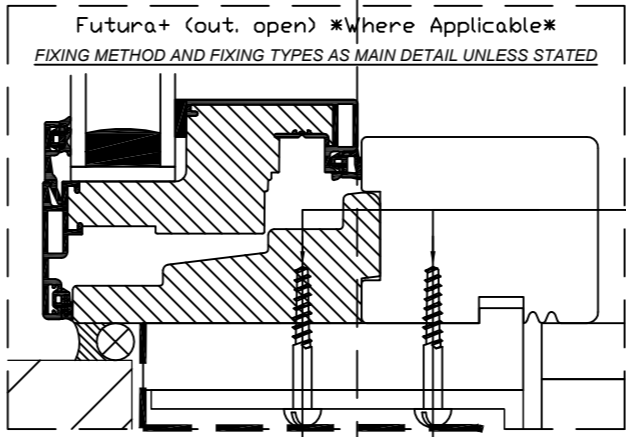
**CONSTRUCTION ISSUE**



CLADDING CONTRACTOR TO ENSURE COORDINATION WITH IDEALCOMBI INTERFACE DETAILS. COORDINATION NOT POSSIBLE DURING INITIAL DESIGN AS CONTRACTORS DETAILS NOT AVAILABLE.  
**ANY DESIGN CHANGES MUST NOT AFFECT FRAME SIZES.**



CLADDING CONTRACTOR TO ENSURE COORDINATION WITH IDEALCOMBI INTERFACE DETAILS. COORDINATION NOT POSSIBLE DURING INITIAL DESIGN AS CONTRACTORS DETAILS NOT AVAILABLE.  
**ANY DESIGN CHANGES MUST NOT AFFECT FRAME SIZES.**



1 / 301

**idealcombi**  
 www.IdealCombi.com  
 Chancery Pavilion  
 Boycott Avenue  
 Oldbrook  
 MILTON KEYNES tel(01582) 860 940  
 MK6 2TA fax(01582) 860 949

DETAILS ON THIS DRAWING ARE THE COPYRIGHT OF IDEAL COMBI AND MUST NOT BE REPRODUCED IN WHOLE OR PART WITHOUT PERMISSION

**DO NOT SCALE !!**  
**SEE SPECIFICATION DRAWING FOR SPEC.**

IMPORTANT NOTES (THE RECIPIENT WILL BE DEEMED TO HAVE COGNISANCE AND ACCEPTANCE OF ALL THESE NOTES)  
 THIS DRAWING MUST BE CHECKED BY THE CLIENT, HIS AGENT OR THE MAIN CONTRACTOR AND APPROVED IN WRITING. ANY SUBSEQUENT WRITTEN INSTRUCTION TO MANUFACTURE (INCLUDING 'NO COMMENT') SHALL CONSTITUTE APPROVAL. MANUFACTURE CANNOT COMMENCE UNTIL APPROVED. THEREAFTER THE CLIENT OR THE MAIN CONTRACTOR WILL BE LIABLE FOR ANY ADDITIONAL EXPENSES INCURRED BY THE MANUFACTURER AND THEIR AGENTS FOR ANY ALTERATION TO THE DESIGN DETAIL OR LAYOUT REQUESTED BY THEM.

CDM REGULATIONS  
 DESIGN RISK ASSESSMENT

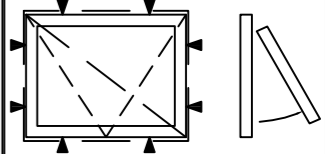
THE SIZE AND SHAPE OF INDIVIDUAL UNITS FOR THIS PROJECT HAVE BEEN DESIGNED TO SATISFY THE OVERALL DESIGN REQUIREMENTS FOR THE BUILDING. ALL PERSONS HANDLING AND INSTALLING SUCH UNITS SHOULD BE AWARE THAT THERE ARE RISKS ASSOCIATED WITH THIS TYPE OF WORK THAT CANNOT BE DESIGNED OUT.

RISK REDUCTION:  
 FIXERS MUST BE SUITABLY EXPERIENCED IN THE HANDLING OF WINDOWS AND DOORS AND EMPLOY LIFTING METHODS APPROPRIATE TO THE SIZE AND SHAPE OF THE UNITS. ACCESS AND WORKING PLATFORMS MUST BE TO THE STANDARD REQUIRED BY CURRENT LEGISLATION. REFERENCE MUST ALWAYS BE MADE TO COSHH INFORMATION FOR THE MATERIALS BEING USED.

**Fixing Positions:**

Fixing positions noted thus:  
 Standard recommended locations are 150mm from each end and each mullion, then @ 450-600mm centres.

Note:  
 Arrow points to handle and diagonal slash shows frame size



rev.	description	date
rev.4.	description4.	date4.
C2	UPDATED TO INCLUDE FUTURA+ FRAME PROFILE. RE-ISSUED FOR CONSTRUCTION.	30.01.17
C1	UPDATED TO DMA & EOC COMMENTS WHERE APPLICABLE AND ISSUED FOR CONSTRUCTION.	24.01.17
P1	ISSUED AT PRELIMINARY STATUS.	11.11.16

REV	DESCRIPTION	DATE
-----	-------------	------

**Architect**  
 Duggan Morris Architects Ltd, Unit 7,  
 16-24 Underwood St, London, N17 7JQ  
 Tel : 020 7566 7440

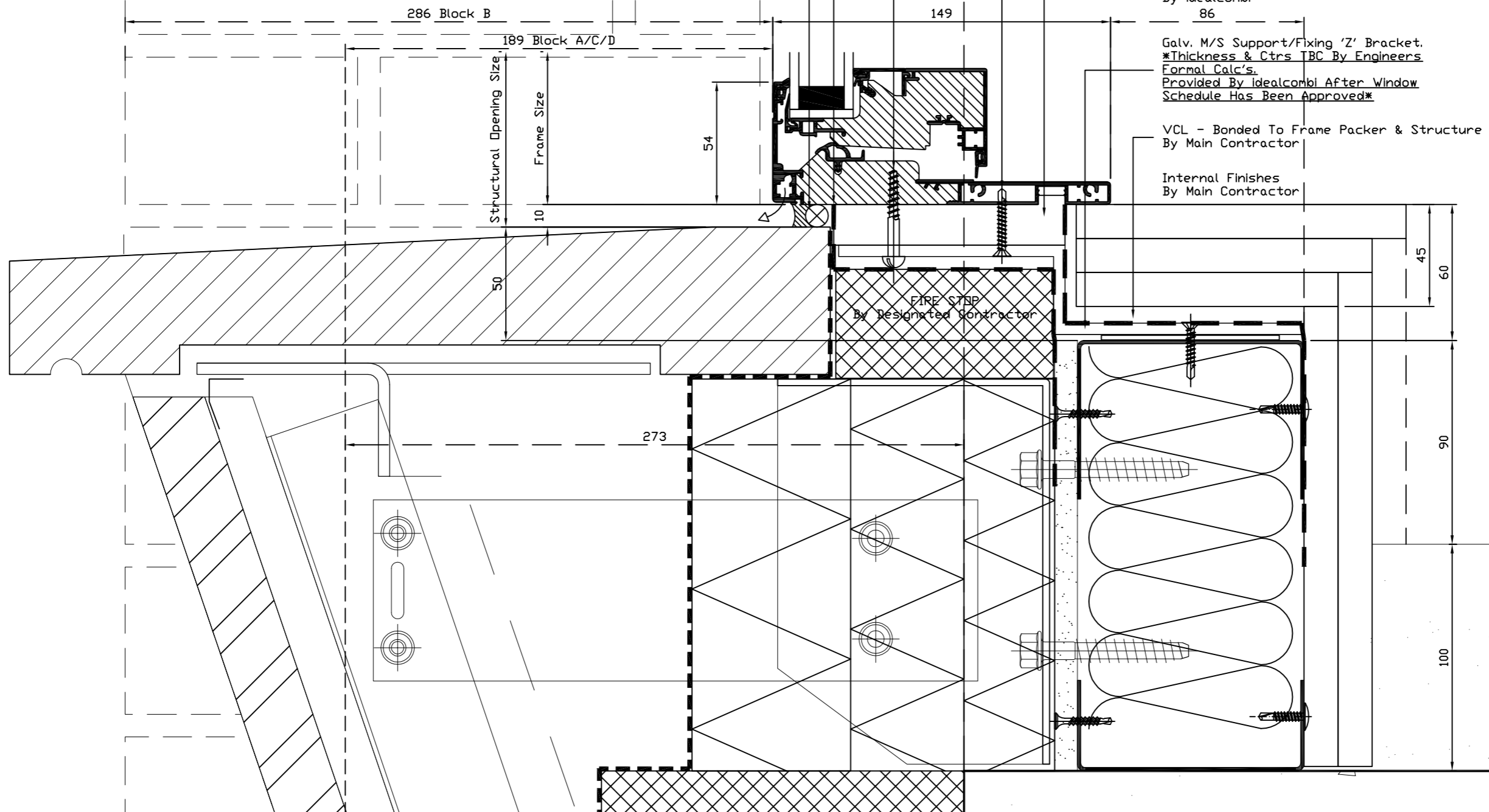
**Contractor**  
 Stanta, Endeavour House, Coopers End Road,  
 Stanstead, Essex, CM24 1SJ  
 Tel : 0127 982 1695

**Project**  
 HAMPSTEAD GREEN

**Title**  
 WINDOW DETAIL - CILL  
 (CLADDING TYPE 2 & 3)

Drawn By	EADS	Date	11/2016
Scale	1:2 @ A3	Checked By	CG / ic
Contract No.	144831	Drawing No.	301

**CONSTRUCTION ISSUE**



2 x No.10 x 38mm Woodscrews  
 or Similar By Installer

Silicone Seal & Backing Rod  
 By Installer

EPDM - Bonded To Frame Packer & Structure  
 By Installer

1 x No.10 x 38mm Woodscrew  
 1 x 5.0 x 30mm Self Drilling Screw  
 or Similar By Installer

18 x 102mm Timber Packer  
 Supplied Loose - Futura+(I)  
 Factory Fitted - Futura+  
 By idealcombi

Galv. M/S Support/Fixing 'Z' Bracket.  
 \*Thickness & Ctrs TBC By Engineers  
 Formal Calc's.  
 Provided By idealcombi After Window  
 Schedule Has Been Approved\*

VCL - Bonded To Frame Packer & Structure  
 By Main Contractor

Internal Finishes  
 By Main Contractor

FFL

SSL

DETAILS ON THIS DRAWING ARE THE COPYRIGHT OF IDEAL COMBI AND MUST NOT BE REPRODUCED IN WHOLE OR PART WITHOUT PERMISSION

**DO NOT SCALE !!**  
**SEE SPECIFICATION DRAWING FOR SPEC.**

**IMPORTANT NOTES** (THE RECIPIENT WILL BE DEEMED TO HAVE COGNISANCE AND ACCEPTANCE OF ALL THESE NOTES)  
THIS DRAWING MUST BE CHECKED BY THE CLIENT, HIS AGENT OR THE MAIN CONTRACTOR AND APPROVED IN WRITING. ANY SUBSEQUENT WRITTEN INSTRUCTION TO MANUFACTURE (INCLUDING 'NO COMMENT') SHALL CONSTITUTE APPROVAL. MANUFACTURE CANNOT COMMENCE UNTIL APPROVED. THEREAFTER THE CLIENT OR THE MAIN CONTRACTOR WILL BE LIABLE FOR ANY ADDITIONAL EXPENSES INCURRED BY THE MANUFACTURER AND THEIR AGENTS FOR ANY ALTERATION TO THE DESIGN DETAIL OR LAYOUT REQUESTED BY THEM.

CDM REGULATIONS  
DESIGN RISK ASSESSMENT

THE SIZE AND SHAPE OF INDIVIDUAL UNITS FOR THIS PROJECT HAVE BEEN DESIGNED TO SATISFY THE OVERALL DESIGN REQUIREMENTS FOR THE BUILDING. ALL PERSONS HANDLING AND INSTALLING SUCH UNITS SHOULD BE AWARE THAT THERE ARE RISKS ASSOCIATED WITH THIS TYPE OF WORK THAT CANNOT BE DESIGNED OUT.

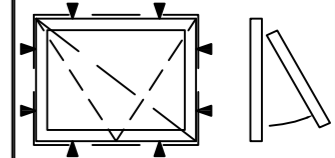
**RISK REDUCTION:**  
FIXERS MUST BE SUITABLY EXPERIENCED IN THE HANDLING OF WINDOWS AND DOORS AND EMPLOY LIFTING METHODS APPROPRIATE TO THE SIZE AND SHAPE OF THE UNITS. ACCESS AND WORKING PLATFORMS MUST BE TO THE STANDARD REQUIRED BY CURRENT LEGISLATION. REFERENCE MUST ALWAYS BE MADE TO COSHH INFORMATION FOR THE MATERIALS BEING USED.

**Fixing Positions:**

Fixing positions noted thus: ▼

Standard recommended locations are 150mm from each end and each mullion, then @ 450-600mm centres.

Note :  
Arrow points to handle and diagonal slash shows frame size



REV	DESCRIPTION	DATE
rev4.	description4.	date4.
C2	UPDATED TO INCLUDE FUTURA+ FRAME PROFILE. RE-ISSUED FOR CONSTRUCTION.	30.01.17
C1	UPDATED TO DMA & EOC COMMENTS WHERE APPLICABLE AND ISSUED FOR CONSTRUCTION.	24.01.17
P1	ISSUED AT PRELIMINARY STATUS.	11.11.16

**Architect**  
Duggan Morris Architects Ltd, Unit 7,  
16-24 Underwood St, London, N1 7JQ  
Tel : 020 7566 7440

**Contractor**  
Stanta, Endeavour House, Coopers End Road,  
Stanstead, Essex, CM24 1SJ  
Tel : 0127 982 1695

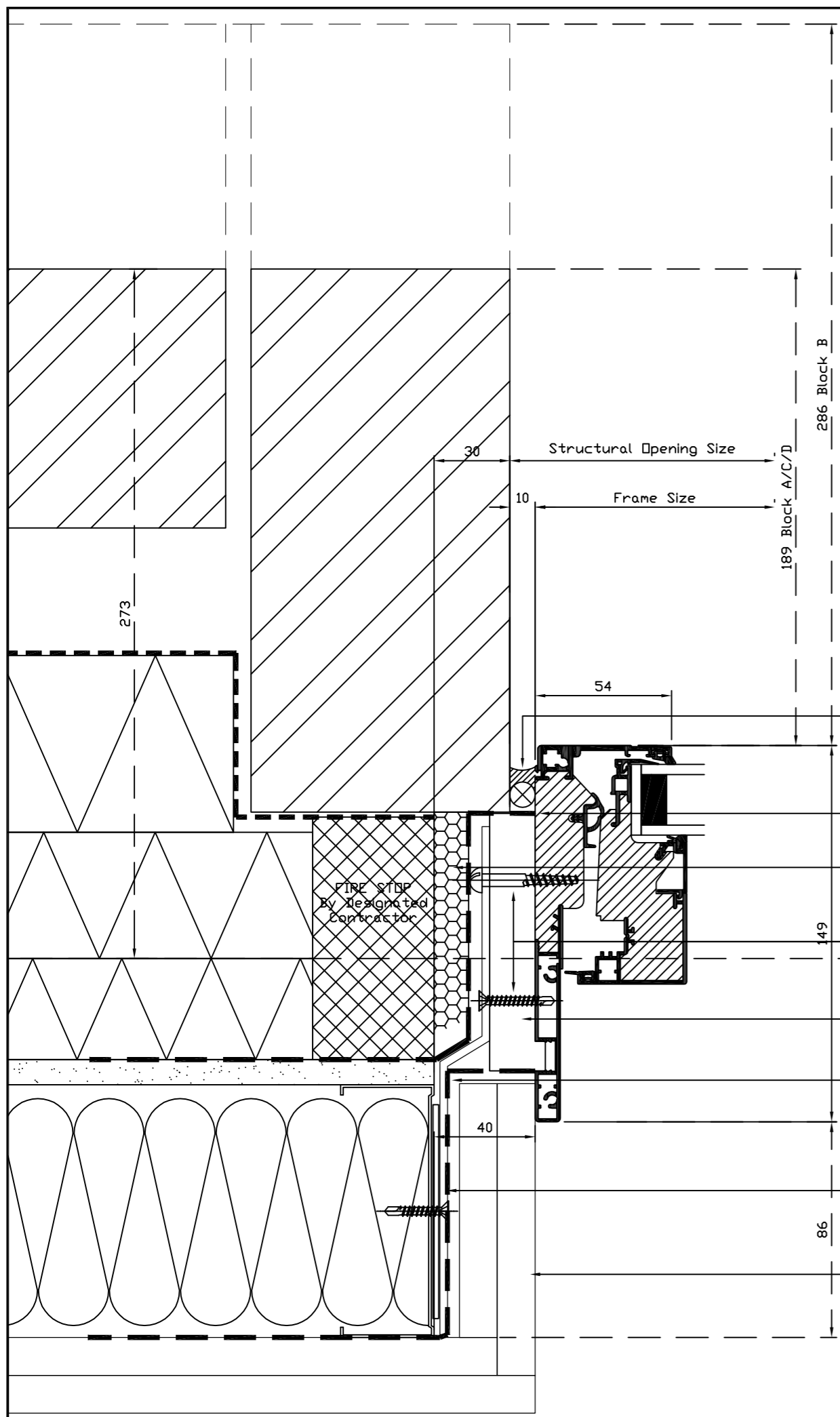
**Project**  
HAMPSTEAD GREEN

**Title**  
WINDOW DETAIL - JAMB  
(CLADDING TYPE 2 & 3)

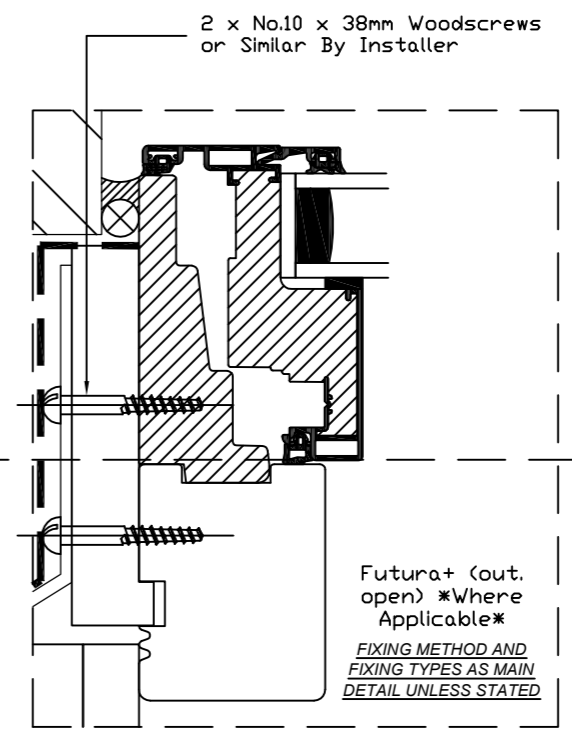
Drawn By	EADS	Date	11/2016
Scale	1:2 @ A3	Checked By	CG / ic
Contract No.	144831	Drawing No.	302

**CONSTRUCTION ISSUE**

**CLADDING CONTRACTOR TO ENSURE COORDINATION WITH IDEALCOMBI INTERFACE DETAILS. COORDINATION NOT POSSIBLE DURING INITIAL DESIGN AS CONTRACTORS DETAILS NOT AVAILABLE.**  
**ANY DESIGN CHANGES MUST NOT AFFECT FRAME SIZES.**



- 30 Structural Opening Size
- 10 Frame Size
- 286 Block B
- 189 Block A/C/D
- 54
- Silicone Seal & Backing Rod By Installer
- EPDM - Bonded To Frame Packer & Structure By Installer
- Expanding PU Foam or Similar Approved Product By Installer
- 1 x No.10 x 38mm Woodscrew  
1 x 5.0 x 30mm Self Drilling Screw or Similar By Installer
- 18 x 102mm Timber Packer Supplied Loose - Futura+(I) Factory Fitted - Futura+ By Idealcombi
- VCL - Bonded To Frame Packer & Structure By Main Contractor
- 40
- 3mm Galv. M/S Fixing Strap Fixed @ 450mm Centres To SFS w. 5.5 x 25mm Self Drilling Screw or Similar By Installer
- 86
- Internal Finishes By Main Contractor





**SPECIFICATION:**

**SCHUECO AWS75.SI/ADS75.SI DOORS - ED01C**

**PROFILES & ACCESSORIES**

OUTER FRAME	M381890PT
OUTER FRAME	M382150PT
INSERT GASKET	224165
DOOR THRESHOLD PROFILE	M381760PT
GLAZING BEAD	184050
GLAZING GASKET, OUTSIDE	284321
GLAZING GASKET, INSIDE	284835
GLAZING REBATE INSULATION	288138
GLASS SUPPORT	288166
GLAZING BEAD CLIP	203102
SILL PROFILE	M381120PT
RETENTION PROFILE	244693
BRUSH GASKET	204379
DOOR LEAF (MASTER LEAF)	M395720PA
DOOR LEAF (SLAVE LEAF)	M395690PA
COUPLING PROFILE	382410
T-CLEATS, NAILED	216593
JOINT SEALING PIECE	218543
GLAZING BEAD WIDTH	184060
GLAZING GASKET, OUTSIDE	284351
GLAZING GASKET, INSIDE	284840
REBATE GASKET	224683

**IRONMONGERY**

KEY/THUMB TURN CYLINDER	211 642
PULL HANDLE (INTERNAL & EXTERNAL)	ASH123.25.900.PS.F2A
SINGLE POINT LOCK (BOTH SIDES)	241285
SHOOT BOLT TO SLAVE LEAF	240716
STRIKE PLATE	209796/209805
PROFILE CYLINDER ROSE	218897
PROFILE CYLINDER ROSE	237963
DOOR HINGE (PPC TO MATCH FRAME)	239606
AUTOMATIC OVERHEAD OPERATOR TO BOTH LEAFS (AUTOMATIC DOOR ONLY) - DFA 127 (LOW ENERGY WITH FOB SYSTEM BY OTHERS)	
PPC TO MATCH FRAME	
NON HOLD OPEN SURFACE MOUNTED CLOSER (TO MANUAL DOORS ONLY)	DORMA TS93(RAL9010M)

DOORS NOT SBD COMPLIANT  
ALL GASKETS TO BE BLACK

**EXTERNAL FINISH** - RAL 7044/30J 30% Gloss 2103-1025085  
**INTERNAL FINISH** - RAL9010 5803A90100A00

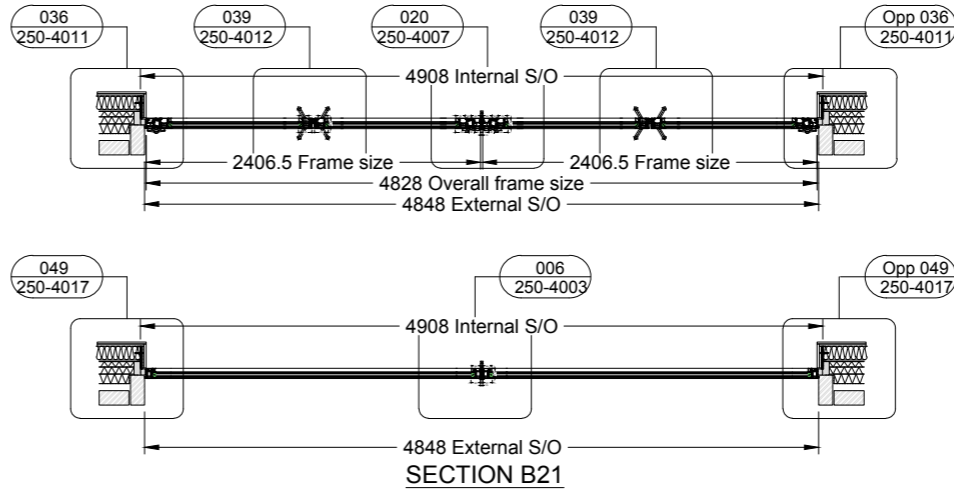
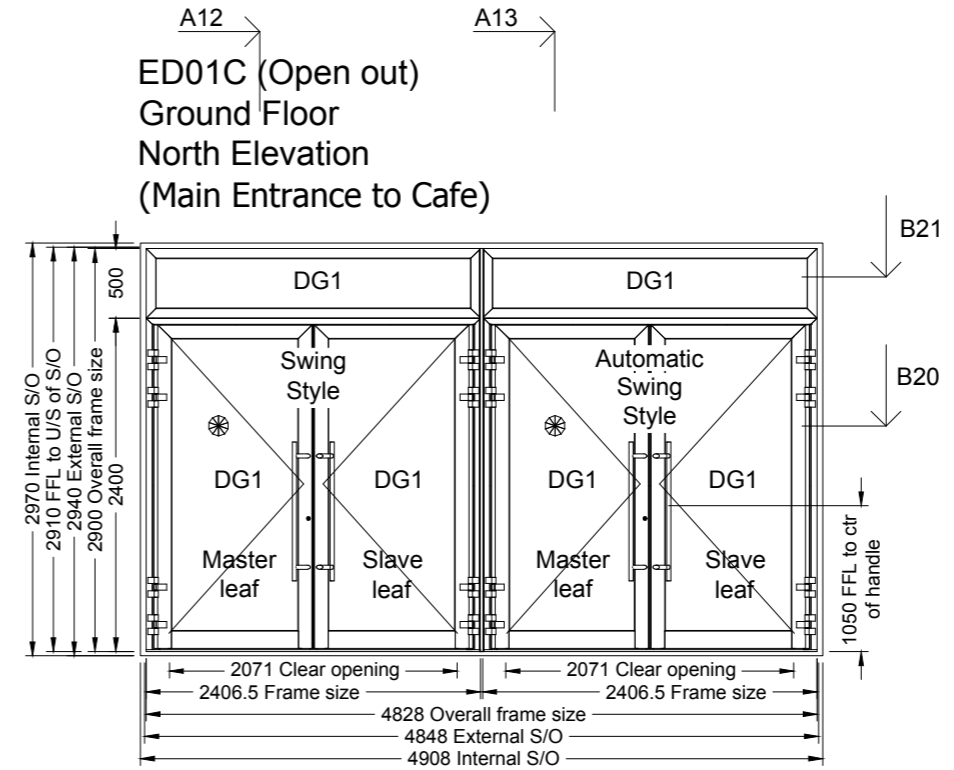
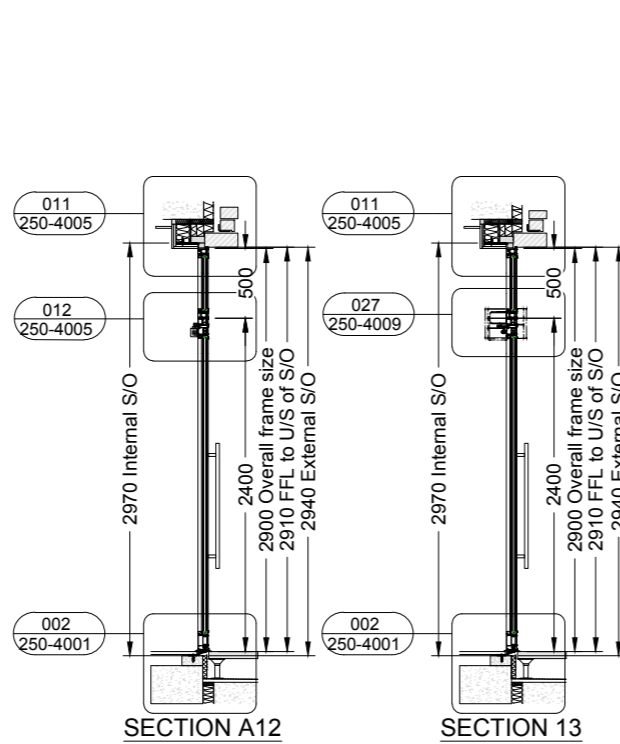
**PAINT SUPPLIER** - IGP  
**MASTIC** - TBC

**GLASS SPECIFICATION**

DG1  
35.5mm COMPRISING  
6mm SUNCOOL 70/40 TOUGHENED HST - OUTER PANE  
16mm BLACK WARM EDGE SPACER  
13.5mm TOUGHENED LAMINATED HST - INNER PANE  
ARGON GAS FILLED CAVITY

G VALUE - 0.42  
LIGHT TRANSMISSION - 67  
UG VALUE - 1.1W/M2K  
LR OUT - 9%  
LR IN - 11%  
RW - 39

DO NOT SCALE WORK TO WRITTEN DIMENSIONS ONLY



**DETAIL SPECIFICATION**

Notes:  
For plan and setting out refer to 3000 series  
For details refer to 4000 series  
For specification refer to 0001 series

Rev.	Date	Initial	Description
D	31.07.17	LL	Revision after architect comments
C	11.07.17	LL	Revision after architect comments
B	15.06.17	LL	Revision after architect comments
A	31.05.17	LL	Revision after architect comments
/	17.05.17	LL	Approval issue

Drawing Status : ISSUED FOR APPROVAL

**Glassbox** Facades Limited  
Fleetwood House,  
480 Bath Road,  
Slough, Berkshire  
SL1 6BB  
Tel : 01753-303955  
Fax : 01753-505100  
info@glassboxfacades.co.uk  
www.glassboxfacades.co.uk

Drawing Title : Elevation Dawing Door ED01C	Project : Bartrams Hampstead Green Pack A
---	--

Drawn : LL Date : MAY 2017 Scale : 1:50 A3 Check : SD

Drawing No. : GB250-2011 Rev : D