

---

**A213**

Hampstead Green  
Issued 22.08.17

---

**2014/6449/P**

**Planning Condition 02**

---

Detailed drawings, or samples of materials as appropriate, in respect of the following, shall be submitted to and approved in writing by the local planning authority before the relevant part of the work is begun:

- a) details including elevations and sections of all windows, external doors and gates, ventilation grilles, balustrades and railings;
- b) manufacturer's specification details of all facing materials and samples of those materials (to be provided on site).

The relevant part of the works shall be carried out in accordance with the details thus approved and all approved samples shall be retained on site during the course of the works.

Reason: To safeguard the appearance of the premises and the character of the immediate area in accordance with the requirements of policy CS14 of the London Borough of Camden Local Development Framework Core Strategy and policy DP24 of the London Borough of Camden Local Development Framework Development Policies

## **Planning Condition 02**

### **CONTENTS**

#### **EXTERNAL WALL TYPES KEY**

##### **EX-1.0 CLADDING**

- EX-1.1 Cladding Type 01 'Special' Brickwork**
- EX-1.2 Cladding Type 02 'Standard' Brickwork**
- EX-1.3 Cladding Type 03 Brick Slip Panels**
- EX-1.4 Cladding Type 04 Precast Concrete Panels**
- EX-1.5 Cladding Type 04 Precast Cills & Parapet Copings**

##### **EX-2.0 WINDOWS, DOORS, AND VENTS**

- EX-2.1 Fixed and Openable Aluminium Window System**
- EX-2.2 Carpark Roller Shutter**
- EX-2.3 Substation Louvered Doors**
- EX-2.4 Perforated Metal Grilles**

##### **EX-3.0 METALWORK**

- EX-3.1 External Balustrades & Gates**

##### **EX-4.0 HARD LANDSCAPING**

- EX-4.1 Sandstone Paving**
- EX-4.2 Dutch Clay Paving**

##### **EX-5.0 IRONMONGERY**

- EX-5.1 External Ironmongery**

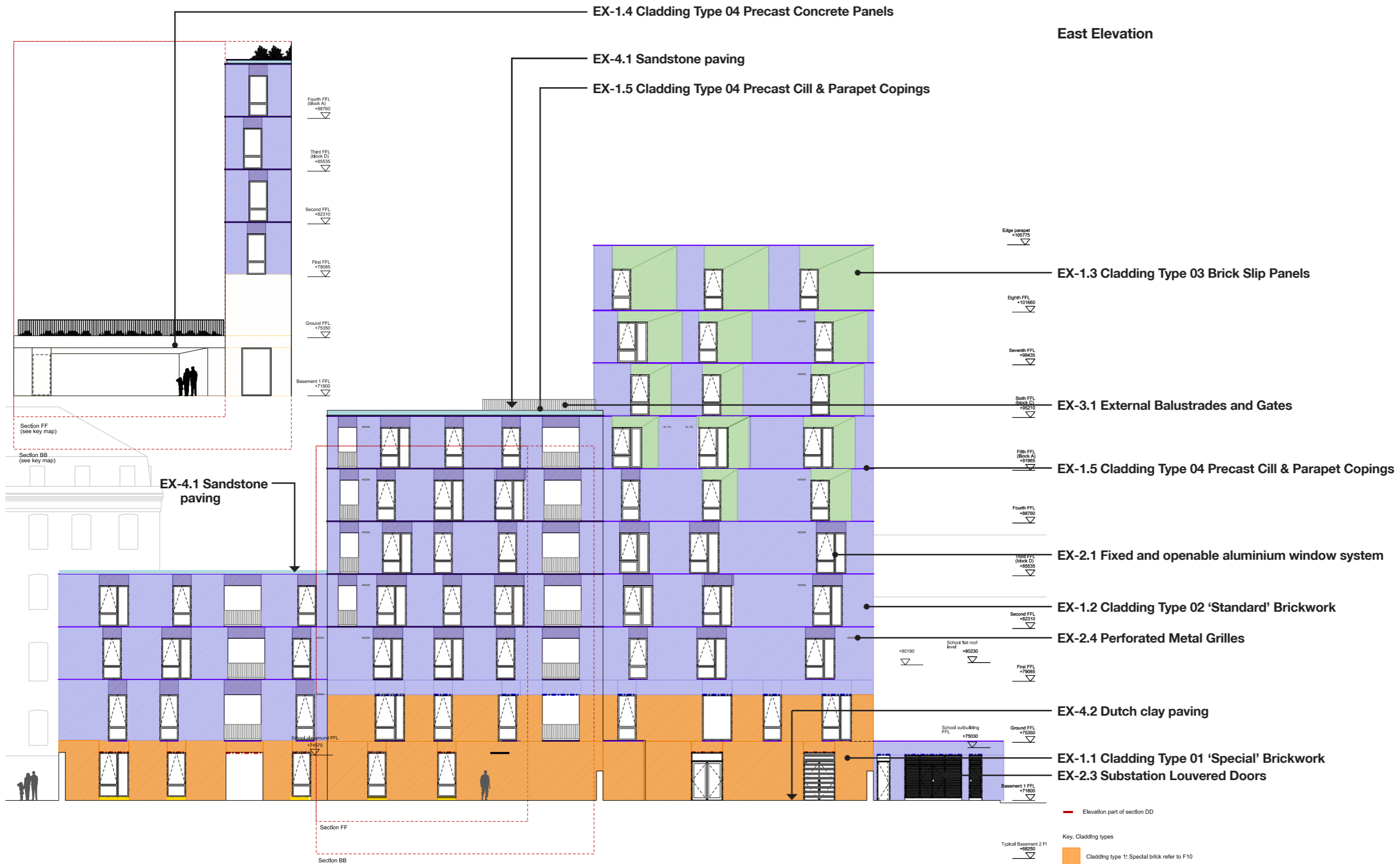
# EXTERNAL WALL TYPES KEY

North Elevation



# EXTERNAL WALL TYPES KEY

East Elevation



Elevation part of section DD

- Key: Cladding types
- Cladding type 1: Special brick refer to F10
  - Cladding type 2: Standard brick refer to F10
  - Cladding type 3: Chamfer panels refer to F10
  - Cladding type 4: Precast concrete panels refer to H42
  - Brick chamfer lintel for cladding type 2 refer to F10
  - Precast concrete sill-coping refer to H42
  - Special brick lintels - Cladding type 1 refer to F10
  - Standard brick lintels - Cladding type 2 refer to F10
  - Special precast concrete sill at lower GF refer to H42
  - Precast concrete Parapet refer to H42

HVAC Exhaust Grille, Bespoke grilles: 2bricks size max. Location only indicative. Final location to be developed with M&E trade contractor. To be positioned a minimum of 2 bricks from window/door openings. Never to be placed within chamfers or lintels.

External Louvers. Refer to louvre schedule refer to L13

# EXTERNAL WALL TYPES KEY

South Elevation



# EXTERNAL WALL TYPES KEY

## West Elevation



- EX-1.3 Cladding Type 03 Brick Slip Panels
- EX-1.4 Cladding Type 04 Precast Concrete Panels
- EX-4.1 Sandstone paving
- EX-3.1 External Balustrades and Gates
- EX-1.5 Cladding Type 04 Precast Cill & Parapet Copings
- EX-2.4 Perforated Metal Grilles
- EX-2.1 Fixed and openable aluminium window system
- EX-1.2 Cladding Type 02 'Standard' Brickwork
- EX-4.2 Dutch clay paving
- EX-1.1 Cladding Type 01 'Special' Brickwork

— Elevation part of section DD

Key, Cladding types

- Cladding type 1: Special brick refer to F10
- Cladding type 2: Standard brick refer to F10
- Cladding type 3: Chamfer panels refer to F10
- Cladding type 4: Precast concrete panels refer to H42
- Brick chamfer lintel for cladding type 2 refer to F10
- Precast concrete sill-coping refer to H42
- Special brick lintels - Cladding type 1 refer to F10
- Standard brick lintels - Cladding type 2 refer to F10
- Special precast concrete sill at lower GF refer to H42
- Precast concrete Parapet refer to H42

  HVAC Exhaust Grille, Bespoke grilles: 2bricks size max. Location only indicative. Final location to be developed with M&E trade contractor. To be positioned a minimum of 2 bricks from window/door openings. Never to be placed within chamfers or lintels.

External Louvres. Refer to louvre schedule refer to L13