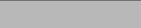


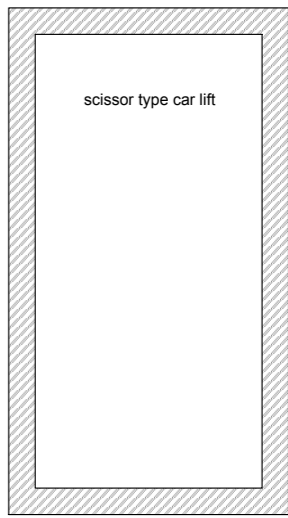
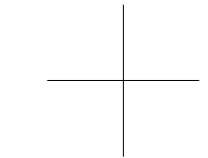
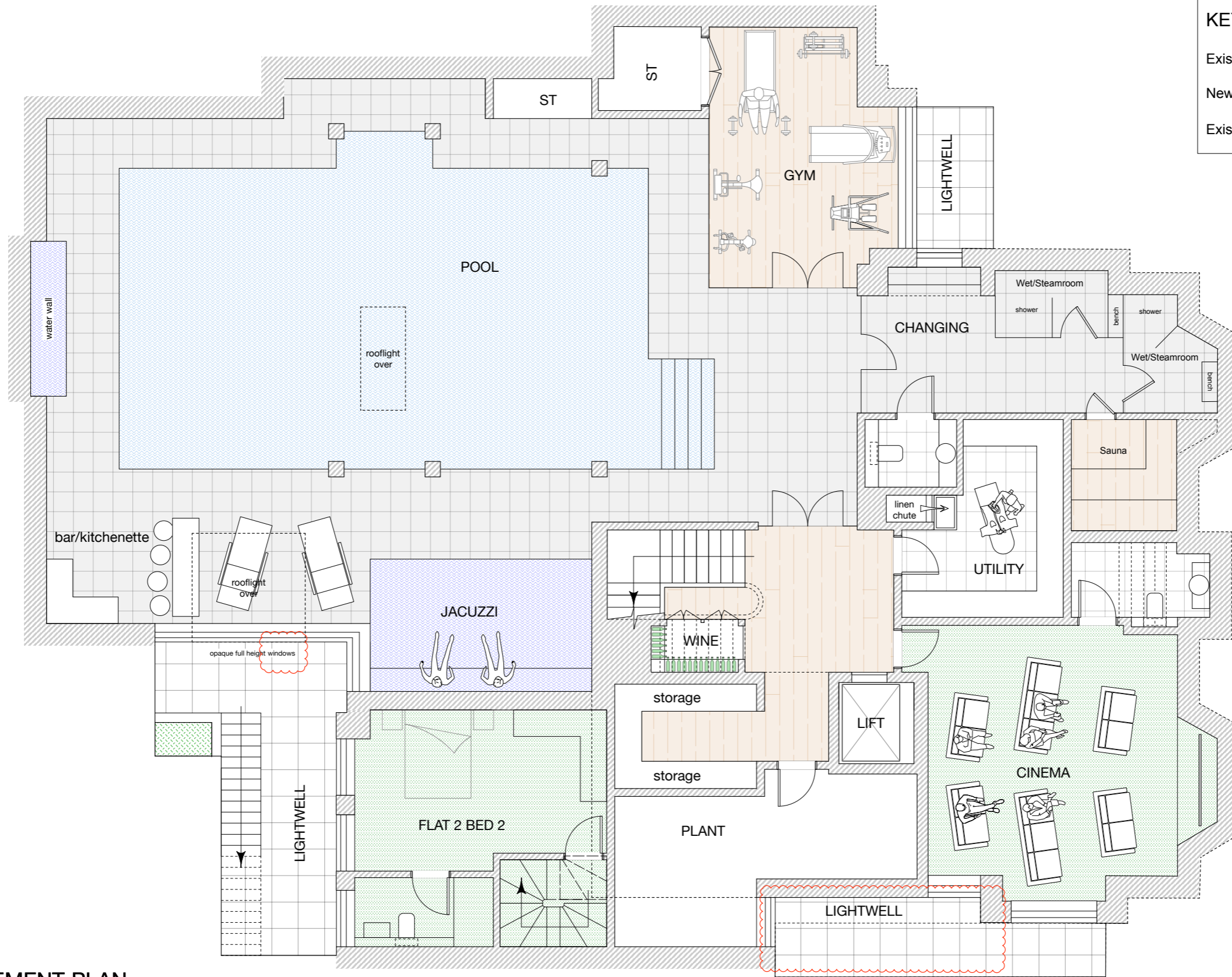


KEY

- Existing 
- New 
- Existing to be removed/demolished 



PROPOSED BASEMENT PLAN

PROPOSED

Architects
 BROD WIGHT

Rev A - Car lift 'pit' added to plan 28.04.17
 Rev B - Flat 2 amended to a 2 bedroomed maisonette 27.09.17
 Rev C - Doors from pool area replaced with windows, reduction in the size and appearance of the south lightwell 02.09.17

