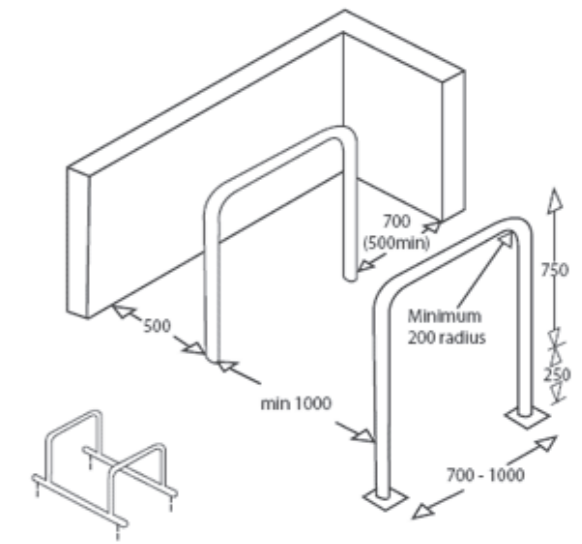
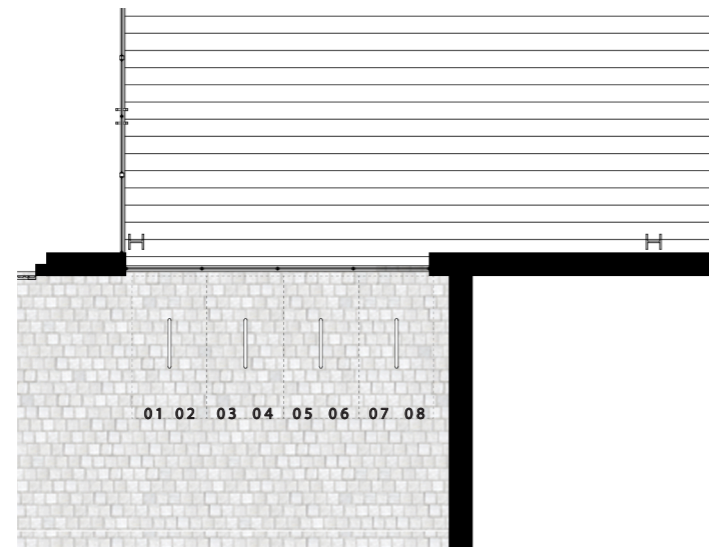


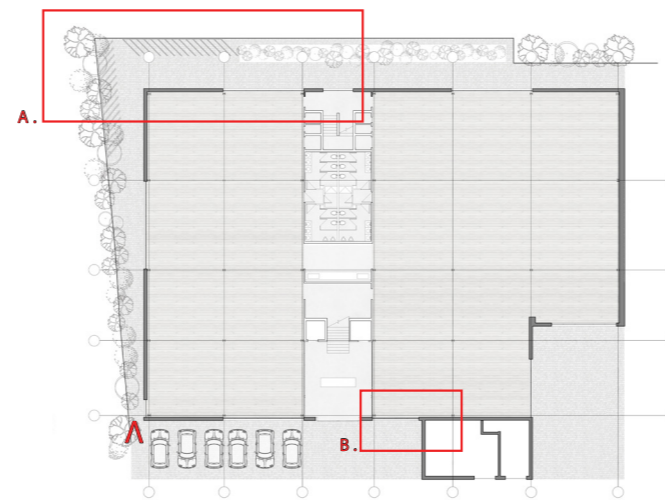
A. PROVISIONS FOR EMPLOYEES



C. SETTING OUT & SHELTER EXAMPLE



B. PROVISIONS FOR VISITORS



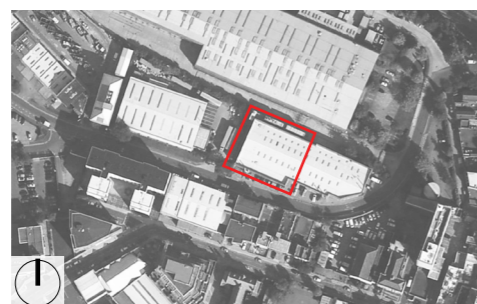
KEY PLAN



CYCLING PROVISIONS

Drawn AC Date 12.09.17 Scale 1:100 @ A3

Job No TS-3.2 Drawing No A705 Revision A1



Notes;

A. Provisions for employees (long stay)
 - 1 space per every 90 sq.m of NET area = **32 spaces**
 - Accessed via secured side gate as indicated on key plan

B. Provisions for guests (short stay)
 - 1 space per every 500 sq.m of NET area = **7-8 spaces**

C. Sheffield cycle hoops installed as per the setting out of the London Plan and CPG7 guidance. All cycle storage areas in sheltered areas.

d
raw

d_raw
 23b goodge place, london, W1T 4SN
 call +44(020) 7636 0016
 Email info@d-raw.com
 www.d-raw.com