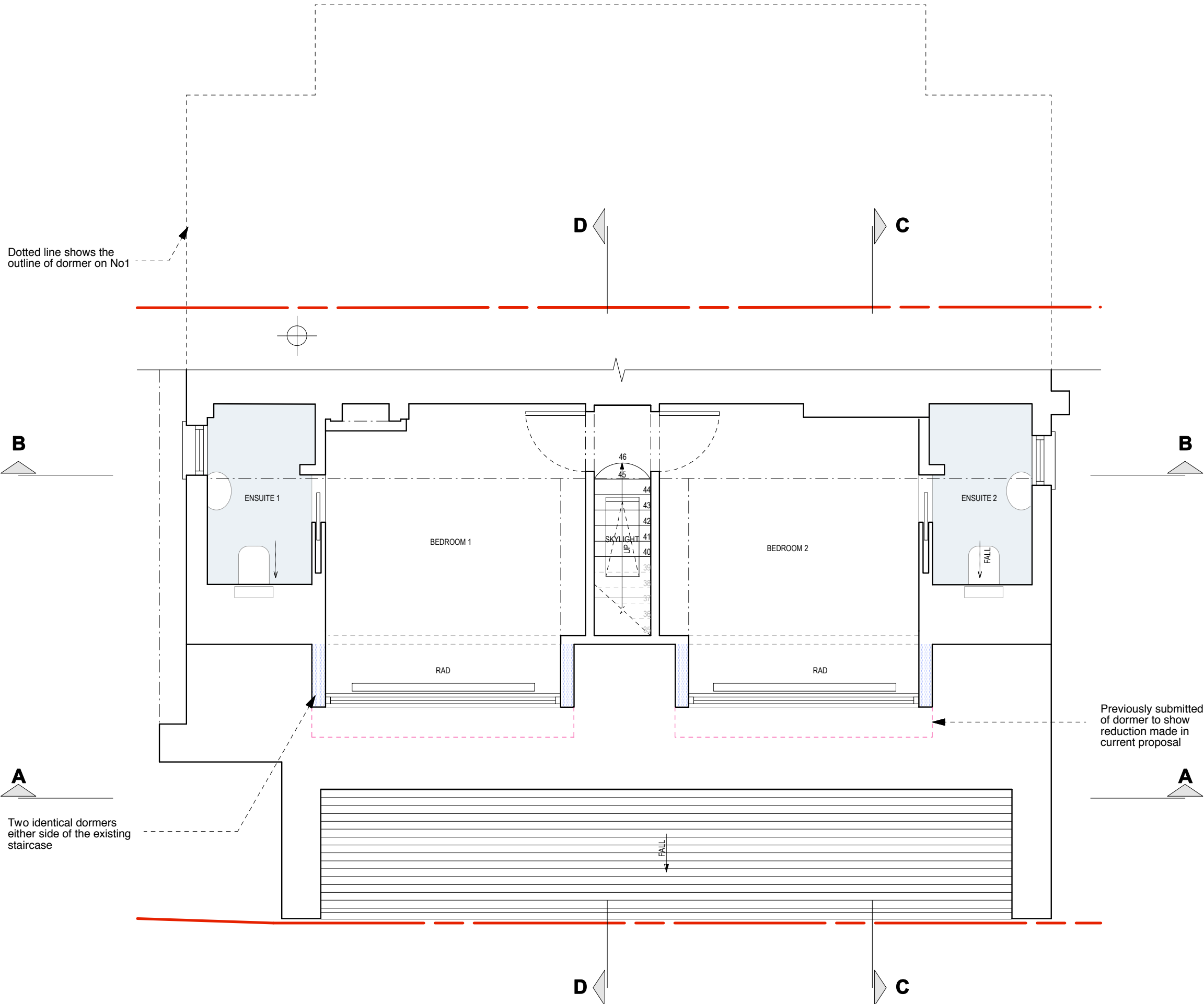


General Notes
 All dimensions to be verified on site
 To be read in conjunction with all relevant documents
 In the event of discrepancy notify the Architect immediately
 This document is copyright of Hugh Cullum Architects Ltd

Issue Status
 SK Sketch E Existing Condition
 D Design P Permissions
 T Tender C Contract

Dotted line shows the outline of dormer on No1



Previously submitted line of dormer to show reduction made in current proposal

Two identical dormers either side of the existing staircase

(D): Further reduction to dormers (04.10.17/OA/HC)
 (C): Dormers moved back appr 400mm (27.09.17/OA/HC)
 (B): Dormer Windows amended (26.09.17/OA/HC)
 (A): Dormers Reconfigured to two smaller ones (22.09.17/OA/HC)
 (): Issued for Planning (14.08.17/OA/HC)
 (): Revision Information (00.00.02/AA/BB)
 Revision: Information (date/drawn by/checked by)

0m 0.5m 1m 5m



AS PROPOSED _ Second Floor Layout

HUGH CULLUM ARCHITECTS LTD
 Bloomsbury Design
 61b Judd Street
 London WC1H 9QT
 t 020 7383 7647
 f 020 7387 7645
 mail@hughcullum.com

2 Provost Road
 Planning Proposal
 Second Floor
 1:50@A3 August 2017
PR002-P113(D)