

Stainless steel  
quench pipe rian  
hood

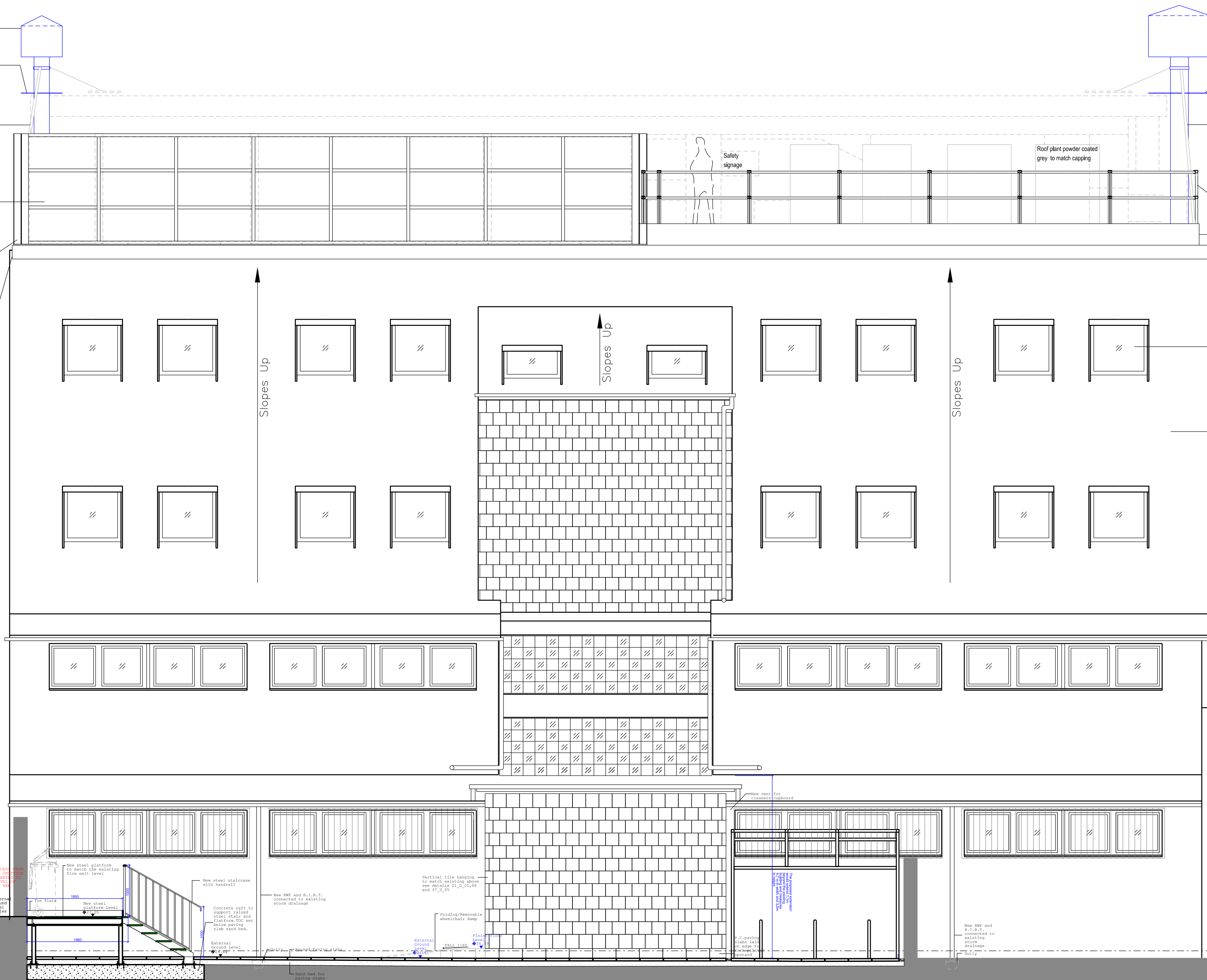
Stainless steel  
quench pipe deflector  
plate nominal 50mm  
from ductwork to  
deflector

Stainless steel guy  
ropes attach to  
nearest duct frame  
support for stability  
final positions to be  
agreed on site

New powder coated  
panelised acoustic  
screen to match  
colour of existing  
awning and cladding

Steel posts weather  
coated RAL7024 Grey  
to match existing  
cladding ie not  
powder coated

Existing lead capping  
retained on Huntley  
street side



Stainless steel  
quench pipe rain hood

Stainless steel  
quench pipe deflector  
plate  
nominal 50mm from  
ductwork to deflector

Stainless steel guy  
ropes attach to  
nearest duct frame  
support for stability  
final positions to be  
agreed on site

Versirail or similar  
approved grey powder  
coated guarding to  
match colour of capping

Matching upstand  
flashing

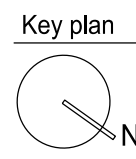
Existing lead capping  
retained on Huntley  
street side

Existing rooflights  
retained

Existing slate roof

Notes

- All dimensions to be checked on site
- Do not scale off this drawing
- All dimensions are shown in mm unless otherwise stated
- Refer to drawing issue sheet for purpose of issue
- If in doubt ask
- © Llewelyn Davies



P1 For Planning Authority 03.09.17 YC  
No. Description Date By

Structural Consultant Services Consultant  
**ACCOM** ARUP

Project Manager Cost Consultant

Project Title  
The Roger Williams Building  
69-75 Cheries Mews, London  
WC1E 6HX

Client  
University College London  
Hospitals Charity (UCLHC)

Drawing Title  
Proposed Rear Extension  
Rear Landscaping Elevation 01

Project Number Drawing Number Revision  
LD15 077.00 CM\_RE\_E\_01 P1

Scale @ A1  
1:50 @ A1  
Date  
30.05.2017

Architects

**LLEWELYN  
DAVIES**

3rd floor | 3-5 Rathbone Place | London | W1T 1HJ  
T +44(0)20 7907 7900 | E london@ldavies.com  
www.ldavies.com