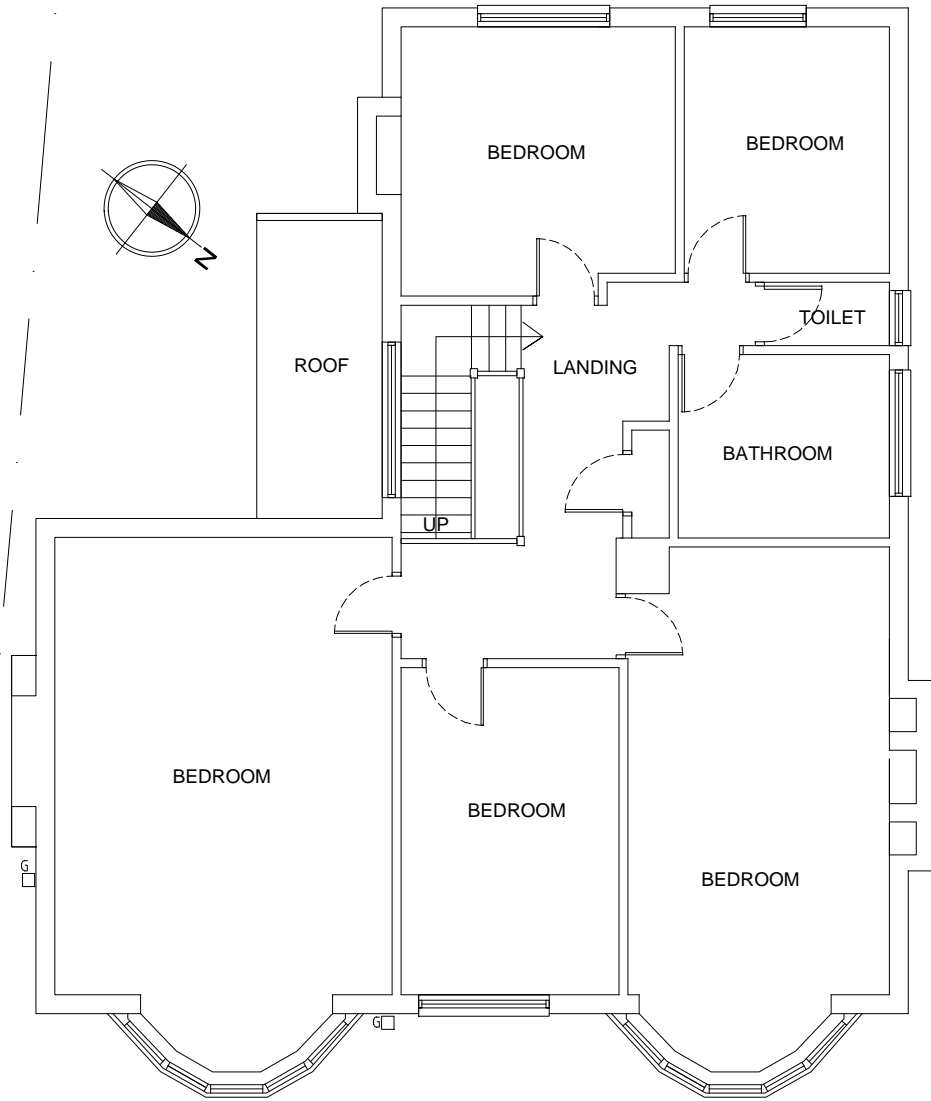
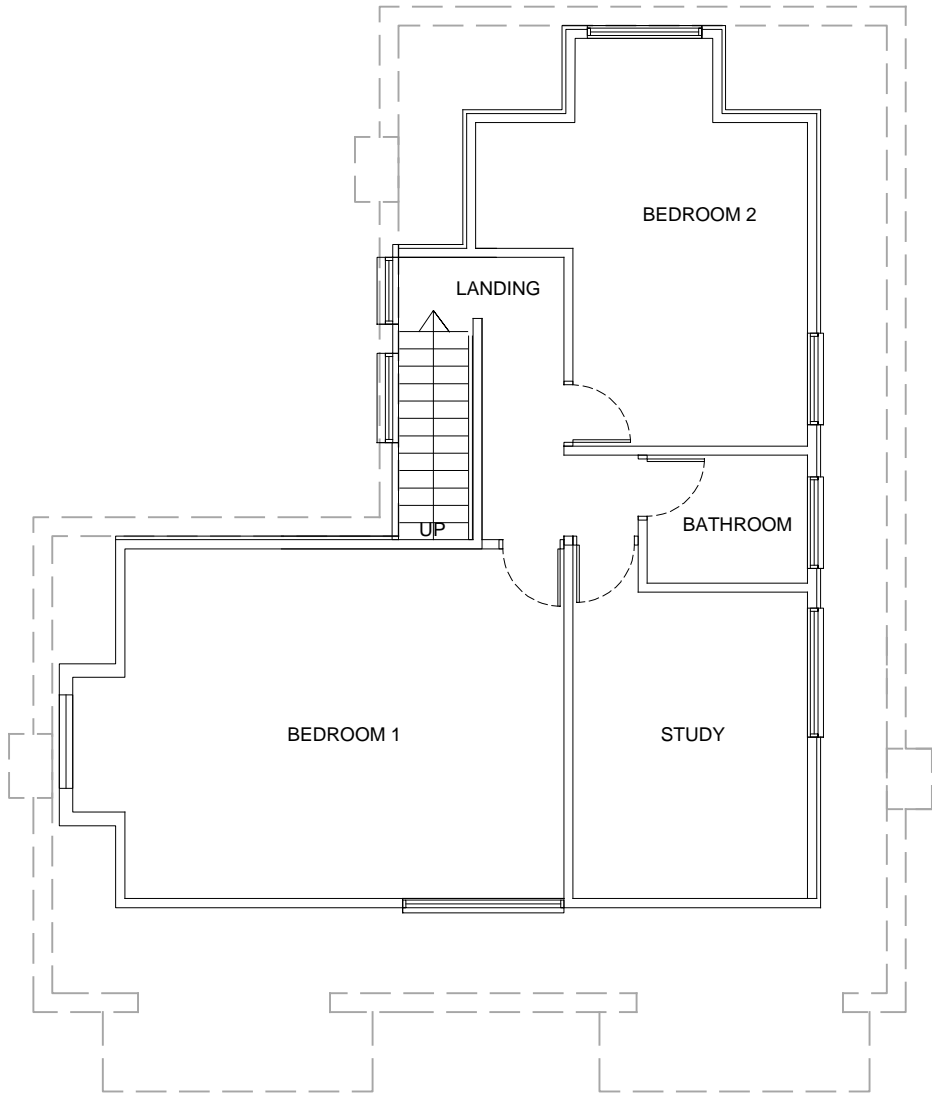


PROPOSED GROUND FLOOR PLAN 1:100



PROPOSED FIRST FLOOR PLAN 1:100



PROPOSED LOFT FLOOR PLAN 1:100



					<div>Client</div> <div>545 Finchley Road London, NW3 7BJ</div>	<div>Scale</div> <div>1:100</div>	<div>Date</div> <div>Oct 2017</div>	<div>Homecraft Design Studios</div> <div>Homecraft Design Studios Group Ltd.</div> <div>3 Pennine Parade, Pennine Drive London, NW2 1NT</div> <div>Mobile: 07958 501134</div> <div>Email: h768@btinternet.com</div>
					<div>Scheme</div> <div>Conversion of existing HMO to a single dwellinghouse</div>	<div>Drawn by:</div> HS	<div>Rev.</div>	
					<div>Title</div> <div>Proposed Plans</div>	<div>Drawing No.</div> <div>201710/545FR/03</div>		
	<div>Rev.</div>	<div>Description</div>	<div>Date</div>					