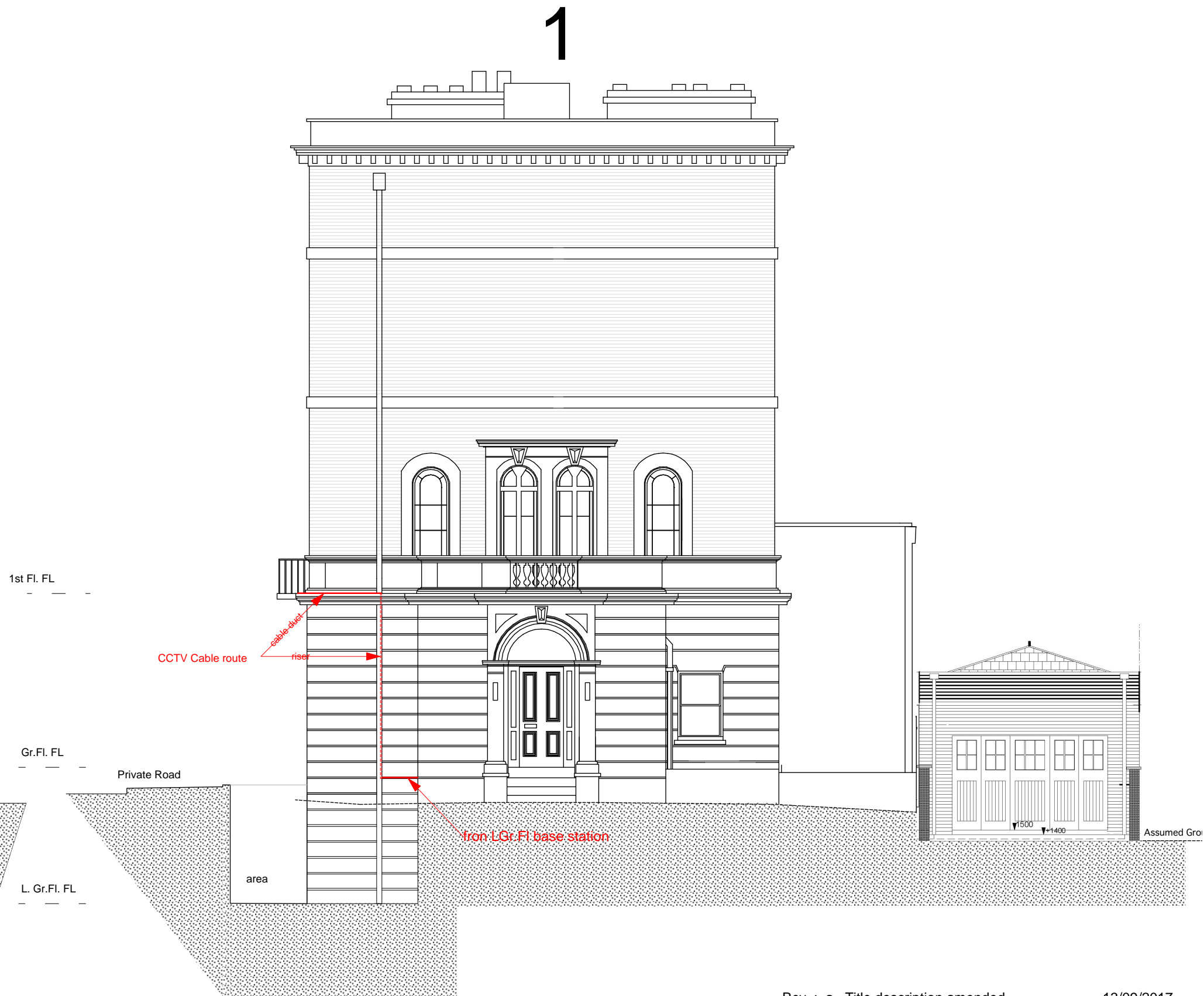




RPT Private Road Elevation



Gloucester Crescent Elevation

Rev. : a. Title description amended 13/09/2017  
 b. Amended to Planner's letter of 14Sep17 18/09/2017

**“Installation of 4x pairs of CCTV security cameras mounted on the underside of the balconies at Nos. 1 , 6, 11 and 17 Regents Park Terrace, connected by a black cable duct running along the top of the balcony terrace from Nos. 1 to 17”**

**1 Regent's Park Terrace NW1 7EE**  
 Proposed work shown ion RED Scale 1: 50 @ A3  
 drwg No 1704 -00- 20