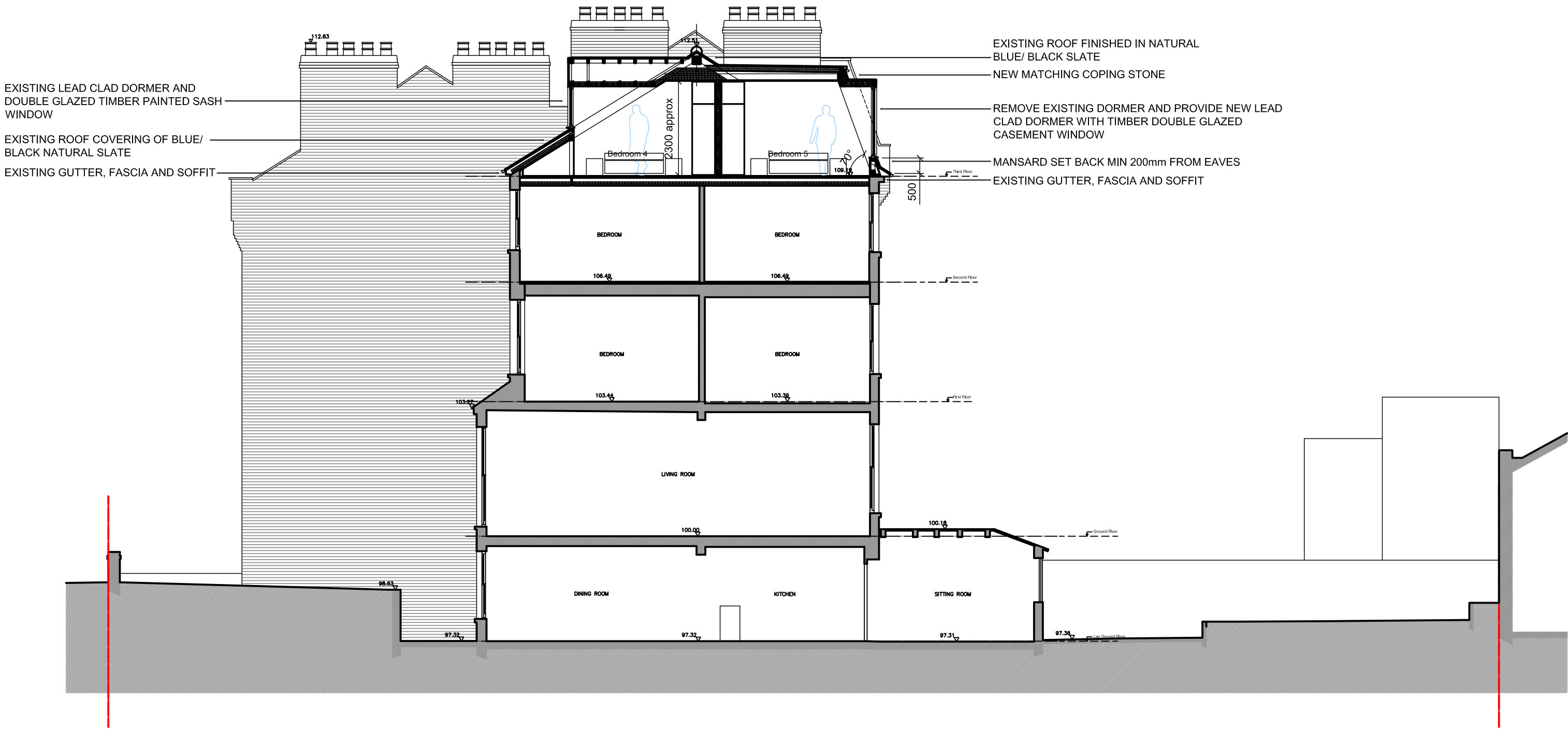
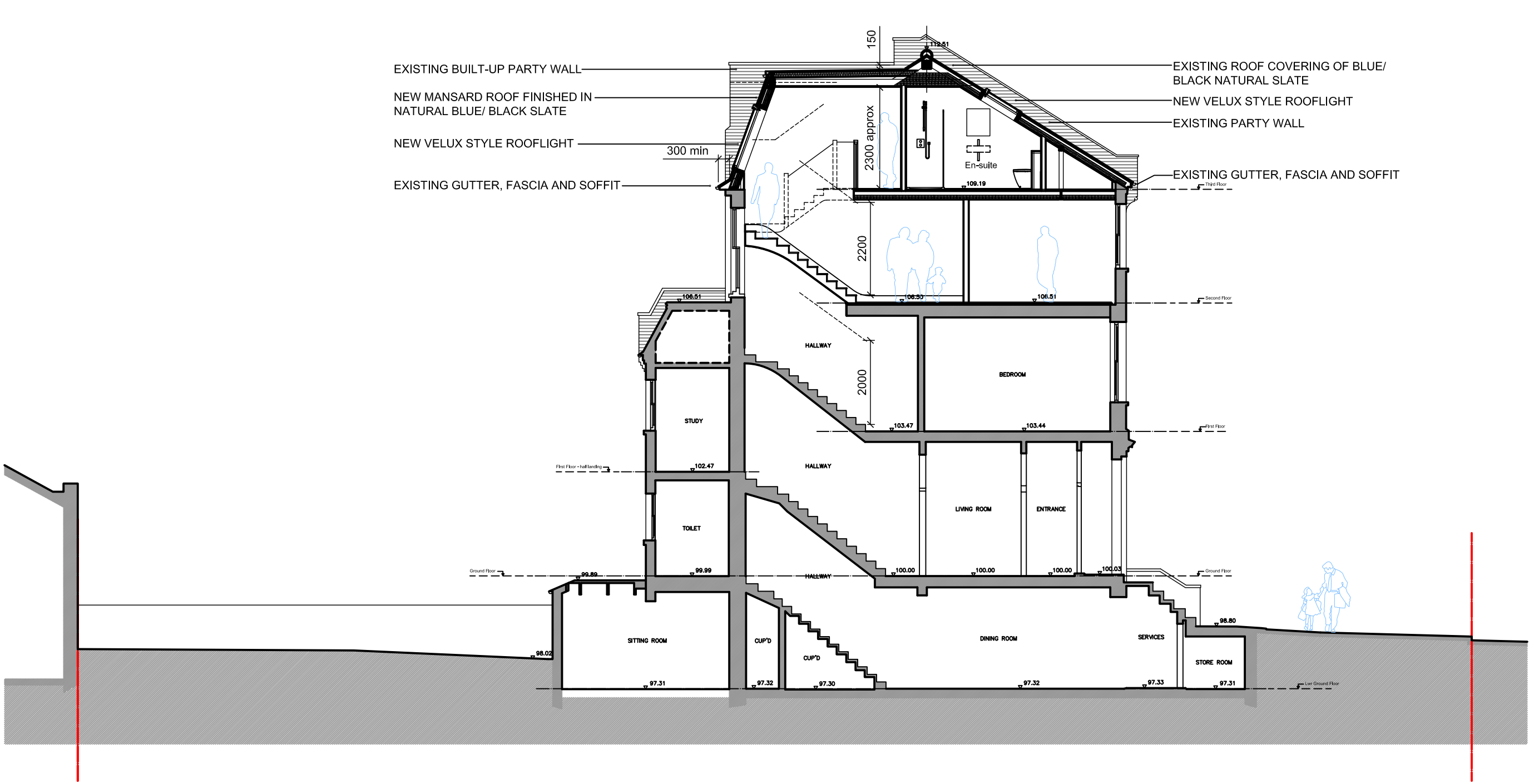


Additional Volume of Roof = 4.08sq.m x 5.35m (length)
= 21.8cu.m



Section A-A



Section B-B



Scale Bar for Plans & Elevations

<div>STAC</div> <div>architecture</div> <div>SNAITH + THURSH ARCHITECT COLLABORATION</div>	<div>STAC Architecture Limited</div> <div>www.stac-architecture.com</div> <div>info@stac-architecture.com</div>	<div>Client</div> <div>Mr E Griffith & Ms S Lui</div>	<div>General Notes:</div> <div>All dimensions to be checked on site prior to commencement of any works, and/or preparation of any shop drawings.</div> <div>Sizes of and dimensions to any structural elements are indicative only. See structural engineers drawings for actual sizes / dimensions.</div> <div>Sizes of and dimensions to any service elements are indicative only. See service engineers drawings for actual sizes and dimensions</div> <div>*****</div>	<div>Drawing Notes:</div> <div></div>	<div>Status</div> <div>P1</div> <div>P2</div>	<div>Revision</div> <div>ISSUED FOR PLANNING</div> <div>NOTES UPDATED AND ISSUED FOR PLANNING</div>	<div>Date</div> <div>26.09.17</div> <div>5.10.17</div>	<div>Drawing Status</div> <div>FOR PLANNING</div>	<div>Drawn</div> <div>DS</div>	<div>Checked</div> <div></div>	<div>Date</div> <div>24.08.17</div>	<div>Scale</div> <div>1:100@A1</div>
	<div>Project</div> <div>Extension, Internal Alterations and Refurbishment of</div> <div>3 Lupton Street, London, NW5 2JA</div>	<div>All dimensions to be checked on site prior to commencement of any works, and/or preparation of any shop drawings.</div> <div>Sizes of and dimensions to any structural elements are indicative only. See structural engineers drawings for actual sizes / dimensions.</div> <div>Sizes of and dimensions to any service elements are indicative only. See service engineers drawings for actual sizes and dimensions</div> <div>*****</div>	<div>This drawing is to be read in conjunction with all other architects drawings, specifications and all other consultants' information.</div> <div>All proprietary systems shown on this drawing are to be installed strictly in accordance with the manufacturers / suppliers recommended details.</div> <div>Any discrepancies between information shown on this drawing and any other contract information or manufacturers / suppliers recommendations is to be brought to the attention of the architect.</div>	<div>Drawing</div> <div>GENERAL ARRANGEMENT SECTIONS A-A & B-B AS PROPOSED</div>	<div>Project</div> <div>0254</div>	<div>Reference</div> <div>D</div>	<div>Number</div> <div>04</div>	<div>Revision</div> <div>P2</div>				