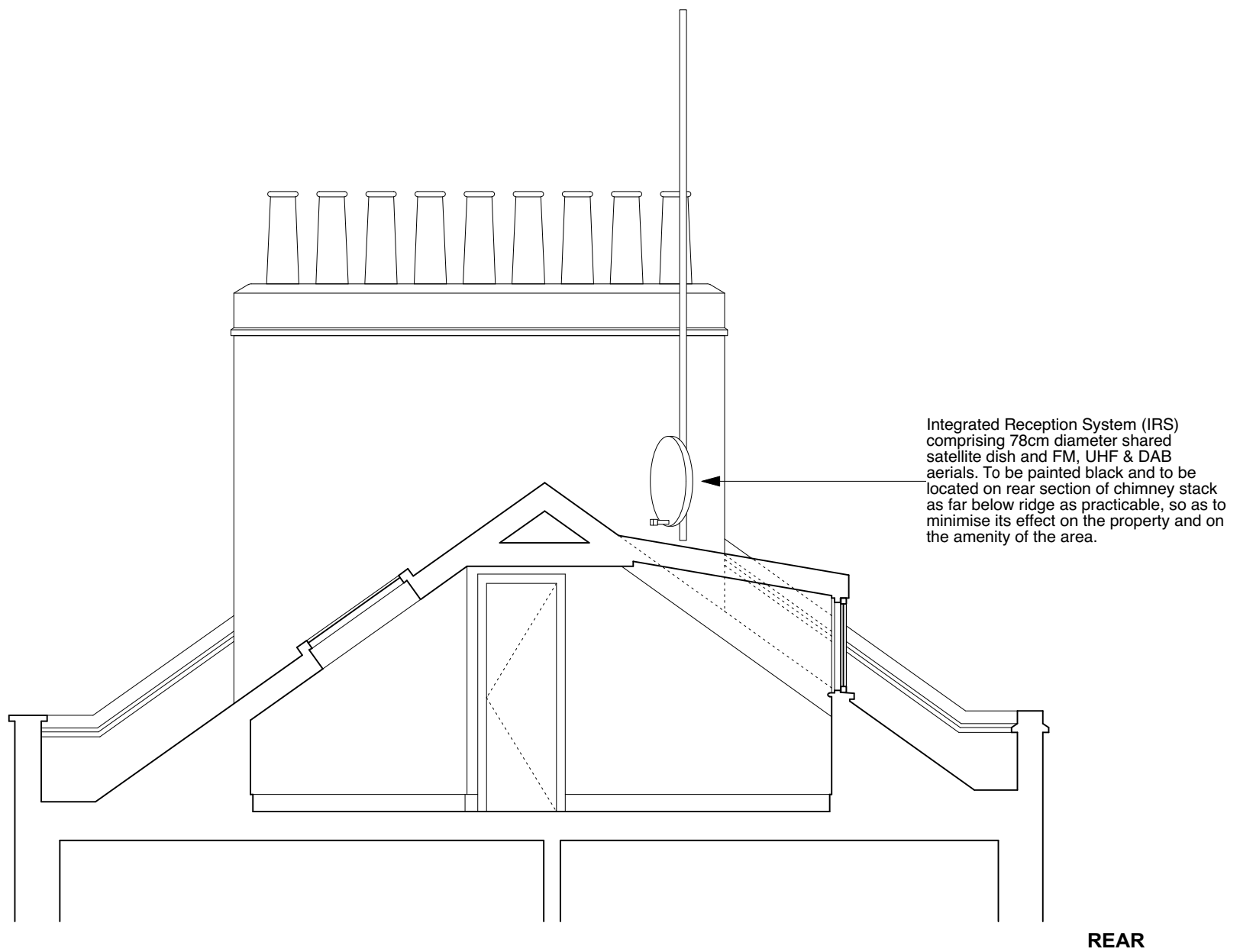




CONSTRUCTION KEY	
	existing retained
	line over/under/behind
	demolished
	new construction
	28mm thick drylining (incorporating Newton 503 mesh & 12.5mm plasterboard)

EXAMPLE OF IRS INSTALLATION - SATELLITE DISH (PAINTED BLACK), TV & RADIO AERIALS (at 33 FREDERICK STREET)



	PROJECT 5 ARCHITECTURE LLP 8 Waterson Street London E2 8HL T: +44 (0)20 7739 9131 F: +44 (0)20 7739 3687 E: info@p5a.co.uk	job title 42 FREDERICK STREET, LONDON WC1X 0ND	scale 1:50 @ A3	drawn SA	drawing no. 6214-FS42-P09
	drawing PROPOSED TV AERIAL INSTALLATION	date OCT 2017	checked XX		