
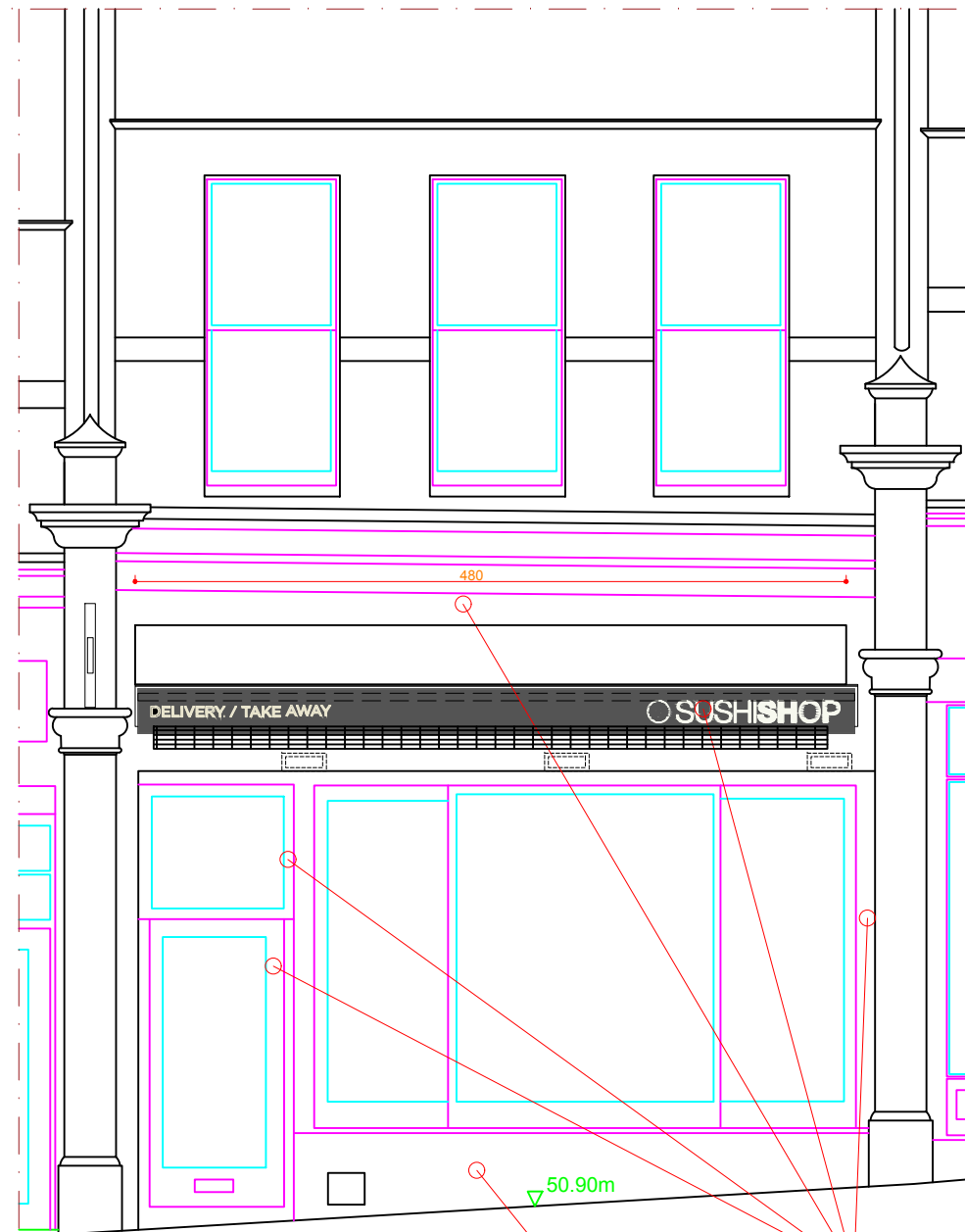


WITHOUT-AWNING

Marque		Localisation	
 SUSHISHOP		- LONDON - - Hampstead -	
Designation		Date	
SKETCH+RENDERING		02/10/2017	
Zone	Phase	Scale	
FRONTAGE	APS	1/50-A3	

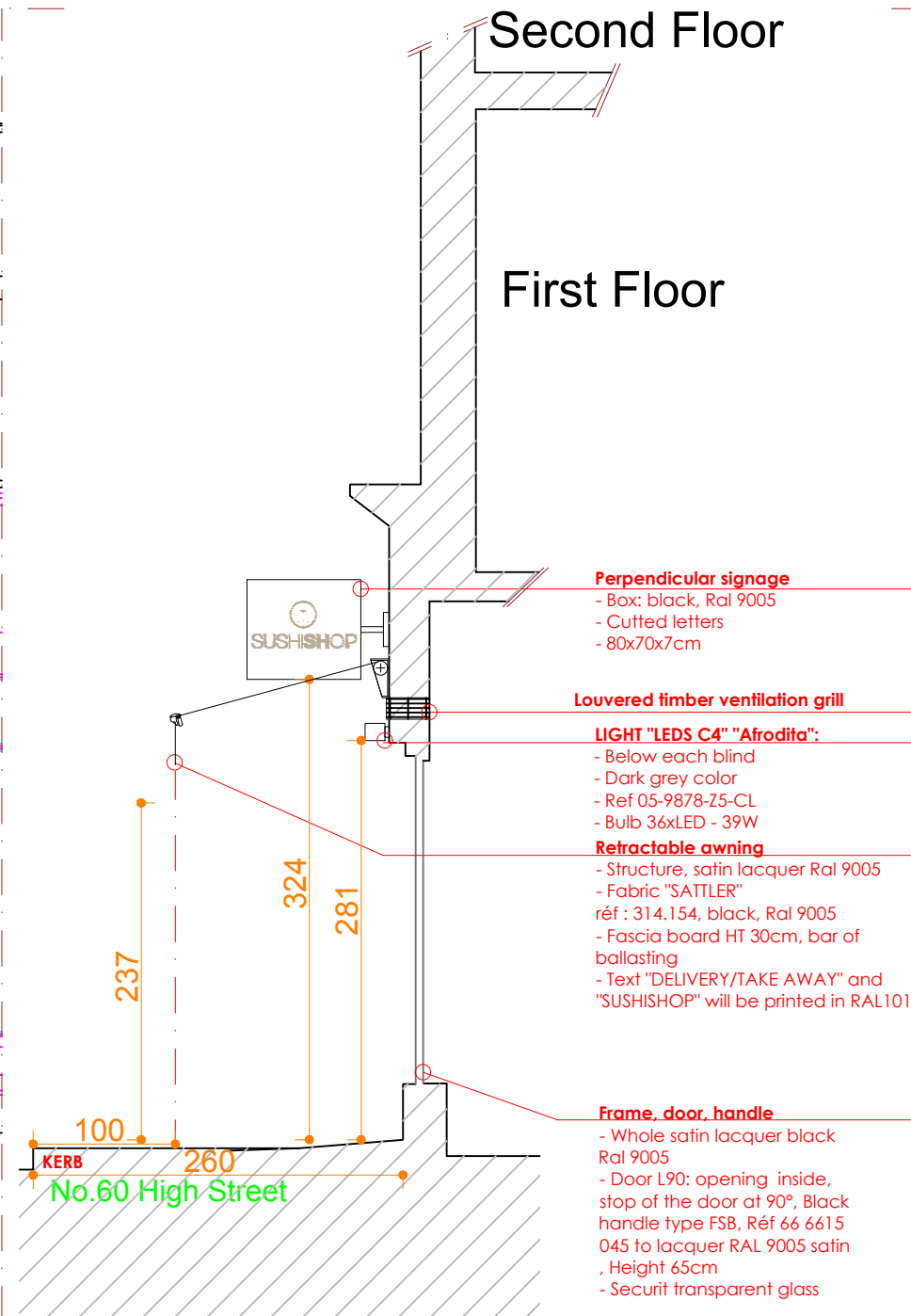
PRINCIPLE DRAWING
CANNOT SERVE IMPLEMENTATION PLAN



No.60 High Street

Existing tiles cladding

Existing timber frame shopfront and fascia



Second Floor

First Floor

Perpendicular signage
- Box: black, Ral 9005
- Cutted letters
- 80x70x7cm

Louvered timber ventilation grill
LIGHT "LEDS C4" "Afrodita":
- Below each blind
- Dark grey color
- Ref 05-9878-Z5-CL
- Bulb 36xLED - 39W

Retractable awning
- Structure, satin lacquer Ral 9005
- Fabric "SATTLER"
réf : 314.154, black, Ral 9005
- Fascia board HT 30cm, bar of ballasting
- Text "DELIVERY/TAKE AWAY" and "SUSHISHOP" will be printed in RAL1013

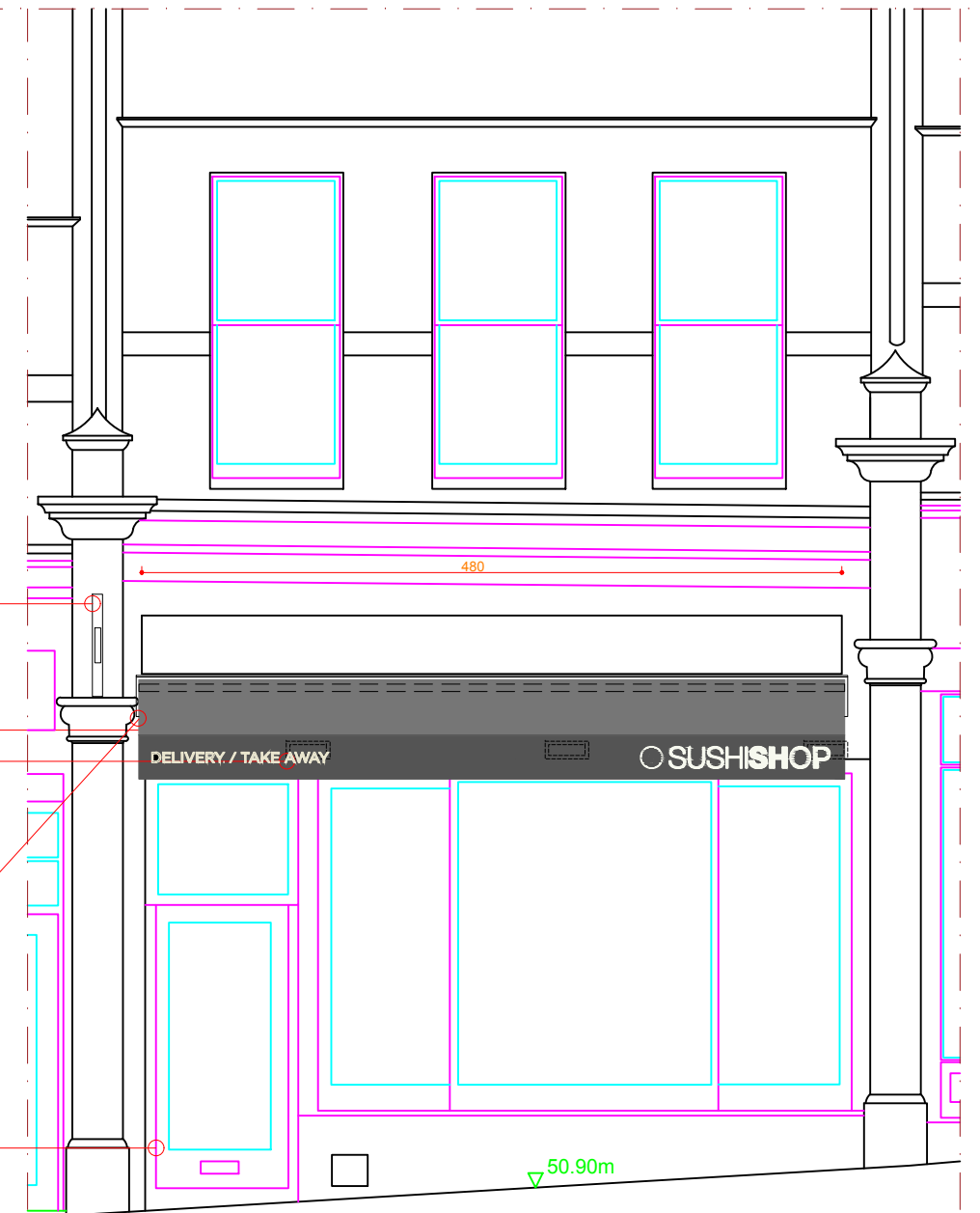
Frame, door, handle
- Whole satin lacquer black Ral 9005
- Door L90: opening inside, stop of the door at 90°, Black handle type FSB, Réf 66 6615 045 to lacquer RAL 9005 satin, Height 65cm
- Securit transparent glass

100
260
KARB
No.60 High Street

237

324

281



No.60 High Street

50.90m