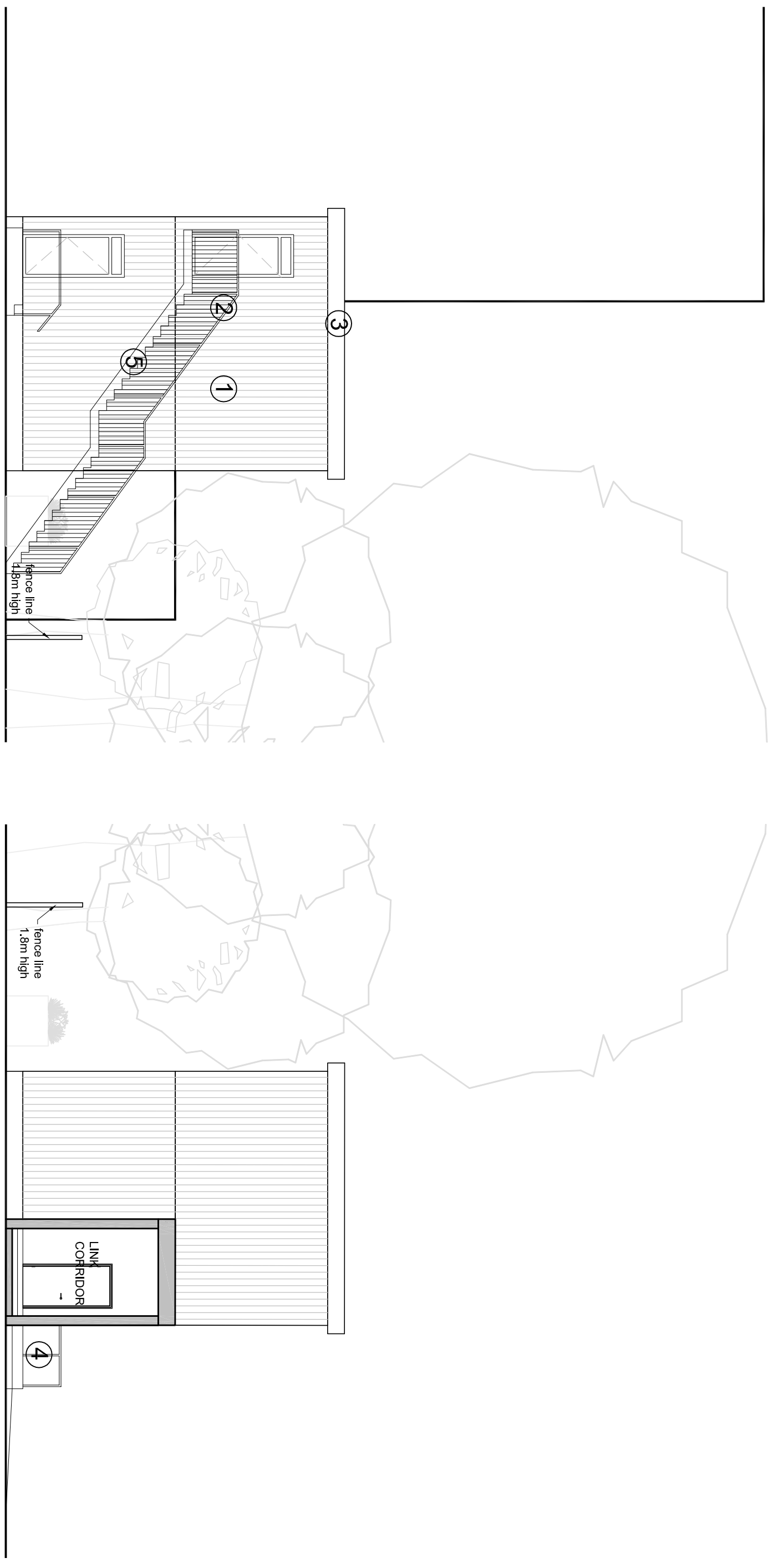


| Rev | Date | Description |
|-----|------|-------------|
| | | |



EAST ELEVATION

WEST ELEVATION

- ① ALUMINIUM PPC WINDOWS & DOORS
- ② VERTICAL TIMBER BOARDING LARCH OR SIMILAR
- ③ METAL FASCIA GREY FINISH
- ④ TIMBER DECKING RAMP KEE KLAMP HANDRAIL AND GUARDING 1.2M C/C
- ⑤ STEEL ESCAPE STAIR PAINTED GREY

TAVISTOCK & PORTMAN NHS FT
NEW FNP OFFICES
PROPOSED EAST & WEST
ELEVATION

A&B
ANSSELL & BAILEY LLP CHARTERED ARCHITECTS

| | | | | |
|-----------------|---------------|-------------------|---------------------------|--------|
| SCALE: 1:100@A3 | DATE: 11/2014 | JOB NUMBER: 14053 | EXTENSION NUMBER: (02)003 | REV: / |
|-----------------|---------------|-------------------|---------------------------|--------|

Tel: 020 7387 0141 Fax: 020 7387 7460
architects@ansellandbailey.com
24-32 Stephenson Way, London, NW1 2HD