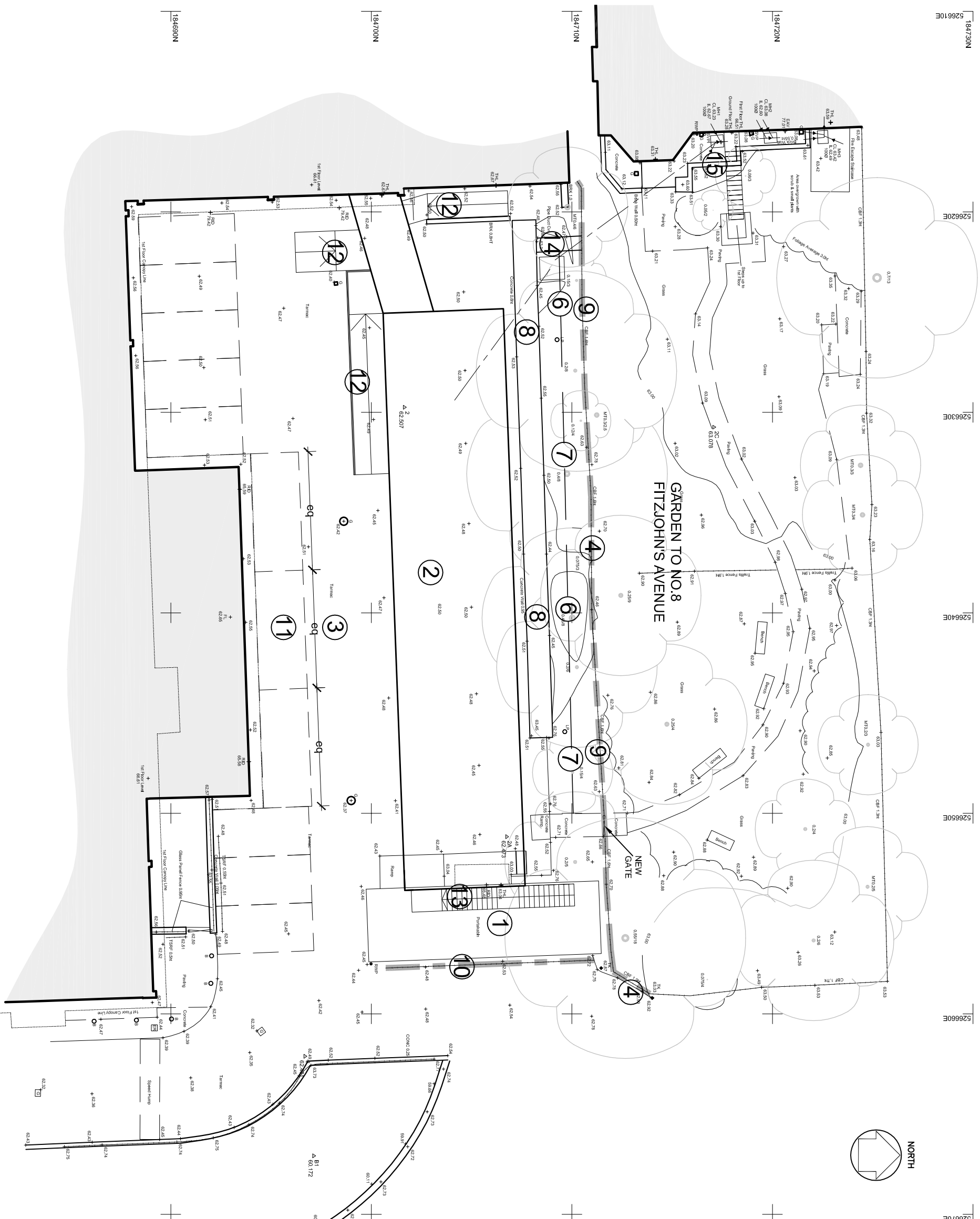


THIS DRAWING IS PROTECTED BY COPYRIGHT. FIGURED DIMS. ONLY TO BE TAKEN FROM THIS DRAWING. ALL DIMENSIONS TO BE CHECKED ON SITE AND ANY DISCREPANCIES REPORTED TO THE ARCHITECT IMMEDIATELY.

Rev	Date	Description

- 1 PORTACABIN, STEPS AND RAMP TO BE REMOVED AND DISPOSED OF.
- 2 NEW MODULAR UNIT 2 STOREY AND SINGLE STOREY LINK.
- 3 CAR PARK
- 4 FENCE LINE
- 5 EXISTING PARKING BAYS
- 6 PLANTING TO BE PRUNED BACK BY 50%
- 7 TREES TO BE PRUNED BACK TO NORTH EDGE OF PLANTER
- 8 CONCRETE PLANTER AND CAR PARK VENT
- 9 NEW FENCING CONCRETE POSTS 1.8X1.8M VERTICALLY BOARDED PANELS & GATE.
- 10 KEE KLAMP GUARDING 1.1M.
- 11 NEW PARKING BAYS, BURN OFF OLD LAYOUT FOR 7 BAYS, PAINT 3 BAYS.
- 12 ACCESS RAMPS.
- 13 ESCAPE STAIRS RAMPS.
- 14 PACKAGE FOUL DRAINAGE PUMPING STATION ABOVE GROUND.
- 15 FOUL DRAINAGE CONNECTION.



TAVISTOCK & PORTMAN NHS FT PROPOSED PLAN
NEW FNP OFFICES

A&B
 SCALE: 1:2000@A3
 DATE: 11/2014
 JOB NUMBER: 14053
 DRAWING NUMBER: (01)004

Tel: 020 7387 0141 Fax: 020 7387 7460
 ANSELL & BAILEY LLP CHARTERED ARCHITECTS 24-32 Stephenson Way, London, NW1 2HD
 architects@ansellandbailey.com