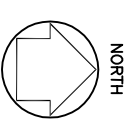
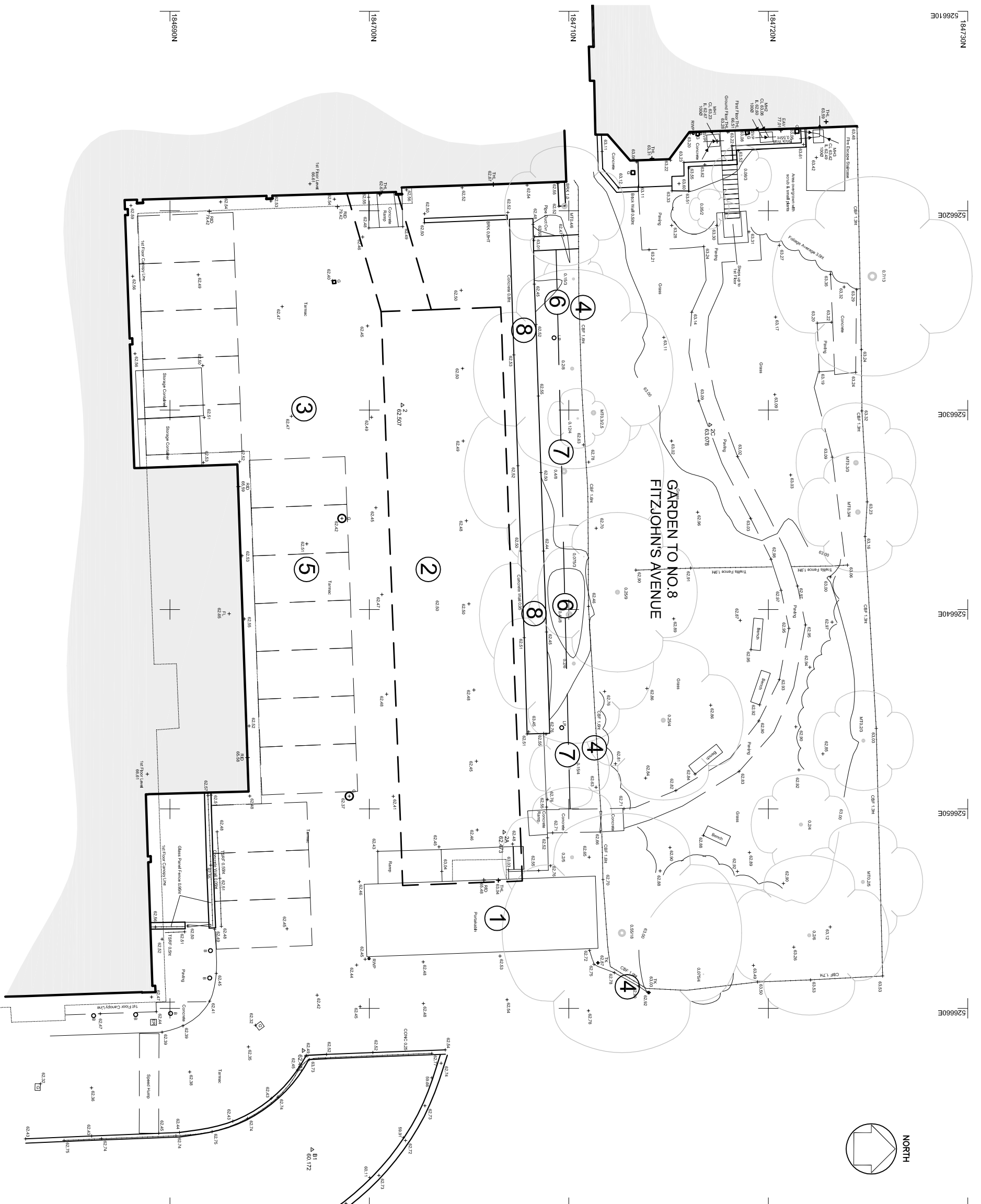


Rev	Date	Description



- 1 PORTACABIN, STEPS AND RAMP TO BE REMOVED AND DISPOSED OF.
- 2 NEW MODULAR UNIT 2 STOREY AND SINGLE STOREY LINK.
- 3 CAR PARK
- 4 FENCE LINE
- 5 EXISTING PARKING BAYS
- 6 PLANTING TO BE PRUNED BACK BY 50%
- 7 TREES TO BE PRUNED BACK TO NORTH EDGE OF PLANTER
- 8 CONCRETE PLANTER AND CAR PARK VENT



TAVISTOCK & PORTMAN NHS FT
NEW FNP OFFICES
EXISTING PLAN

A&B
 SCALE: 1:2000@A3
 DATE: 11/2014
 DRAWING NUMBER: 14053
 REV: (01)003

Tel: 020 7387 0141 Fax: 020 7387 7460
 ANSELL & BAILEY LLP CHARTERED ARCHITECTS 24-32 Stephenson Way, London, NW1 2HD
 architects@ansellandbailey.com