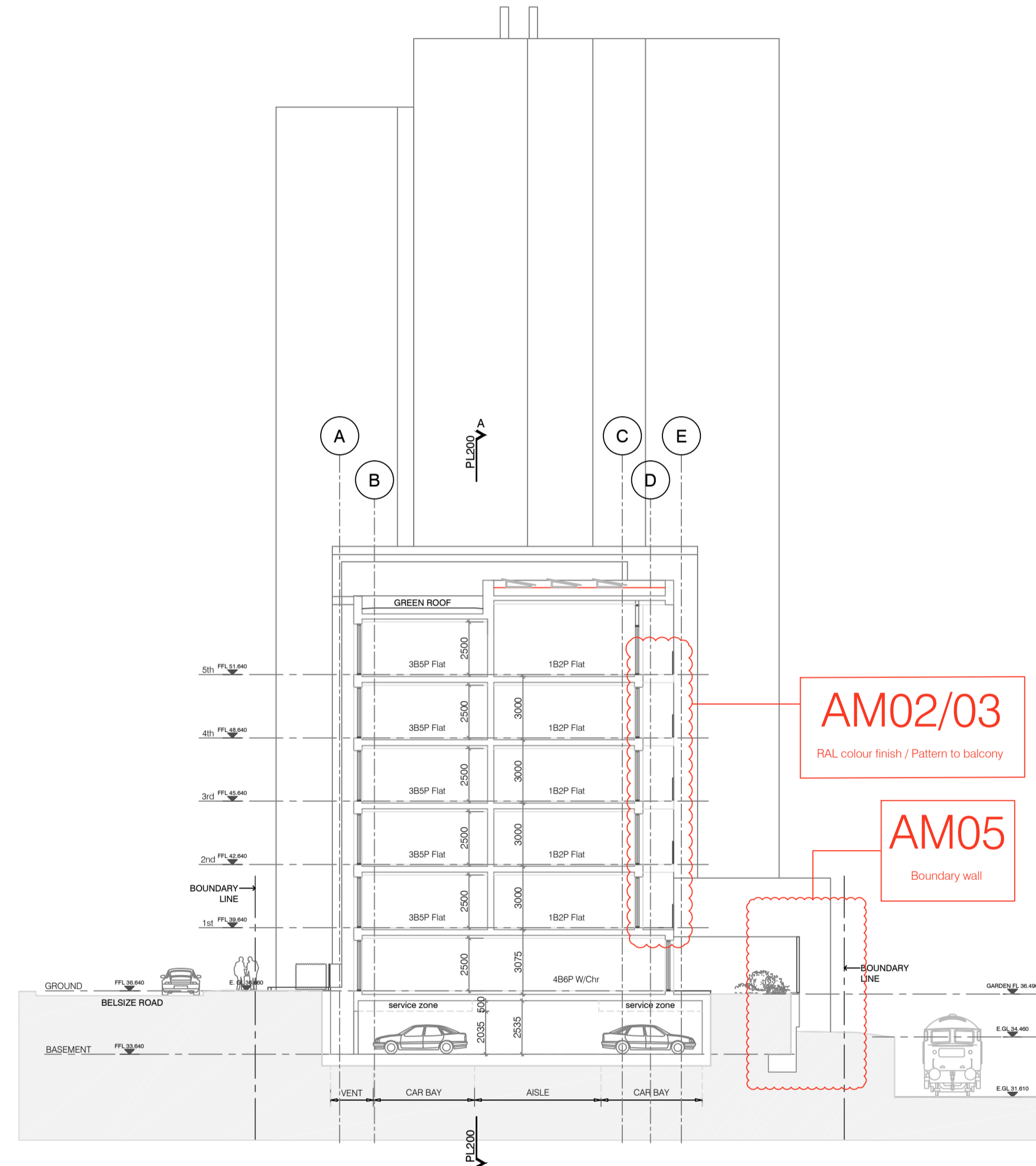
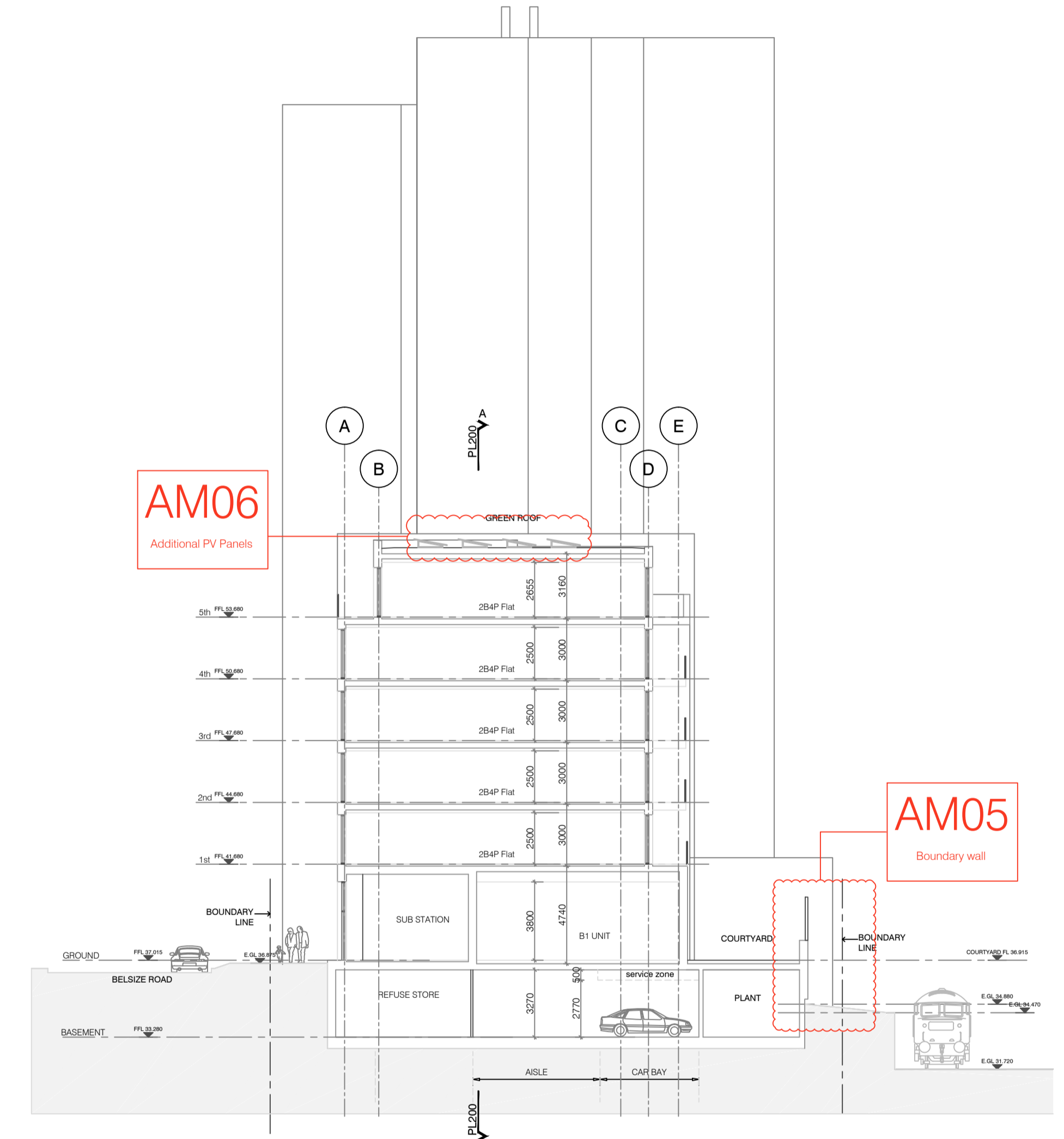


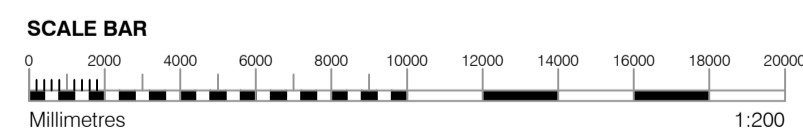
1 SECTION B-B
Through Block F



2 SECTION C-C
Through Block C



3 SECTION D-D
Through Block D



GENERAL NOTES

- This drawing is copyright of PTE architects
- Use figured dimensions only. DO NOT SCALE.
- All dimensions are in millimetres unless noted otherwise
- All levels are in metres above ordnance datum unless noted otherwise
- This drawing must be read in conjunction with all other relevant drawings and specifications from the Architect and other consultants

NOTES

- All setting out to be confirmed on site prior to construction - any discrepancy must be immediately reported to the Architect.

MATERIAL KEY

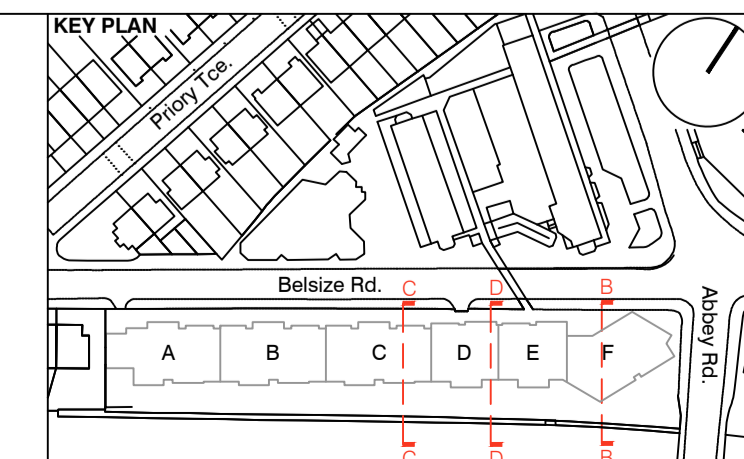
- A** - Brick work type 1: Red Brick, stretcher bond with light colour mortar. Openings to have a deep brick reveal (approx 190mm unless stated otherwise).
- B** - Brick work type 2: Reflective blue/purple Brick, stretcher bond with dark grey mortar. Openings to have a deep brick reveal (approx 190mm unless stated otherwise).
- C** - Brick work type 3: White glazed brick, stack bonded with white colour mortar, to Block F recessed balconies.
- D** - Metal panel: RAL colour finish panels with hidden fixings and minimal joints.

- E** - Shop front frameless glass curtain walling with 75mm aluminum capping at base, RAL colour finish aluminum framed double or triple glazed doors to match.
- F** - Windows / doors: PPC aluminum framed double or triple glazed units (manufacturer to be agreed).
- G** - Canopies: Pre-formed metal boxed canopy in RAL colour finish with hidden structure and integral lighting.
- H** - Perforated metal balustrade or privacy screen: perforated metal (RAL colour finish) supported off PPC coated frame with hidden fixings and minimal joints - allow for non-uniform setting out of perforations - details to be agreed.

- I** - Metal Railing Balustrade: formed from PPC vertical flats (approx 50 x 12mm).
- J** - Metal Railing Balustrade: formed from PPC vertical flats (approx 50 x 12mm) extending to balcony soffit with metal plate fascia fixed to balcony edge.
- K** - Precast concrete or stone coping to parapet wall - allow for reinforcement back to structure.
- L** - Glass balustrade: frameless glass with no visible fixings.
- M** - Brick work type 4: Red Glazed brickwork, stack bonded to residential entrances

- N** - Hit and miss brickwork wall to basement cycle store - free area to meet ventilation requirements to basement.
- O** - 1.2 m high Fagus sylvatica (beech) instant hedge planted in a double staggered row.
- P** - Reconstituted Stone on fixing ancon bracket to form architrave detail to concierge/supermarket/retail entrances.
- Q** - Aluminium PPC louvred doors/panels to refuse store/car park ramp/fire exits/substation/vent intake or exhaust locations.

- R** - Brick work type 2: Slightly recessed brick wall with stepped brick coursing.
- S** - Close boarded timber fence to meet Acoustic requirements.
- T** - Brick work type 5: Reduced specification / off-shade brick wall forming retaining structure.
- U** - Perforated metal balustrade: perforated metal (RAL colour finish) with leaf pattern, supported off PPC coated frame with hidden fixings and minimal joints - allow for non-uniform setting out of perforations - details to be agreed.



S73 APPLICATION			
D	28.04.17	Section 73 issued to planning.	DS DPD
D	31.03.17	Amendment references added. Issued to Wales prior to planning submission.	DS DB
C	21.06.16	Section 73 issued to planning.	EN DPD
rev.	date	description	dm aut

PLANNING

Diespiker Wharf 33 Graham Street London N1 8JX t: 020 7336 7777 w: www.ptea.co.uk f: 020 7336 0770 e: forename.surname@ptea.co.uk		PTEa POLLARD THOMAS EDWARDS architects	
project ABBEY AREA REGENERATION-PHASE 1	job.no. 12_510	LG audited DPD	scale 1:200@A1
date 28.04.17	rev. 510_1_PL_201	date JUL 13	rev. D