

DO NOT SCALE

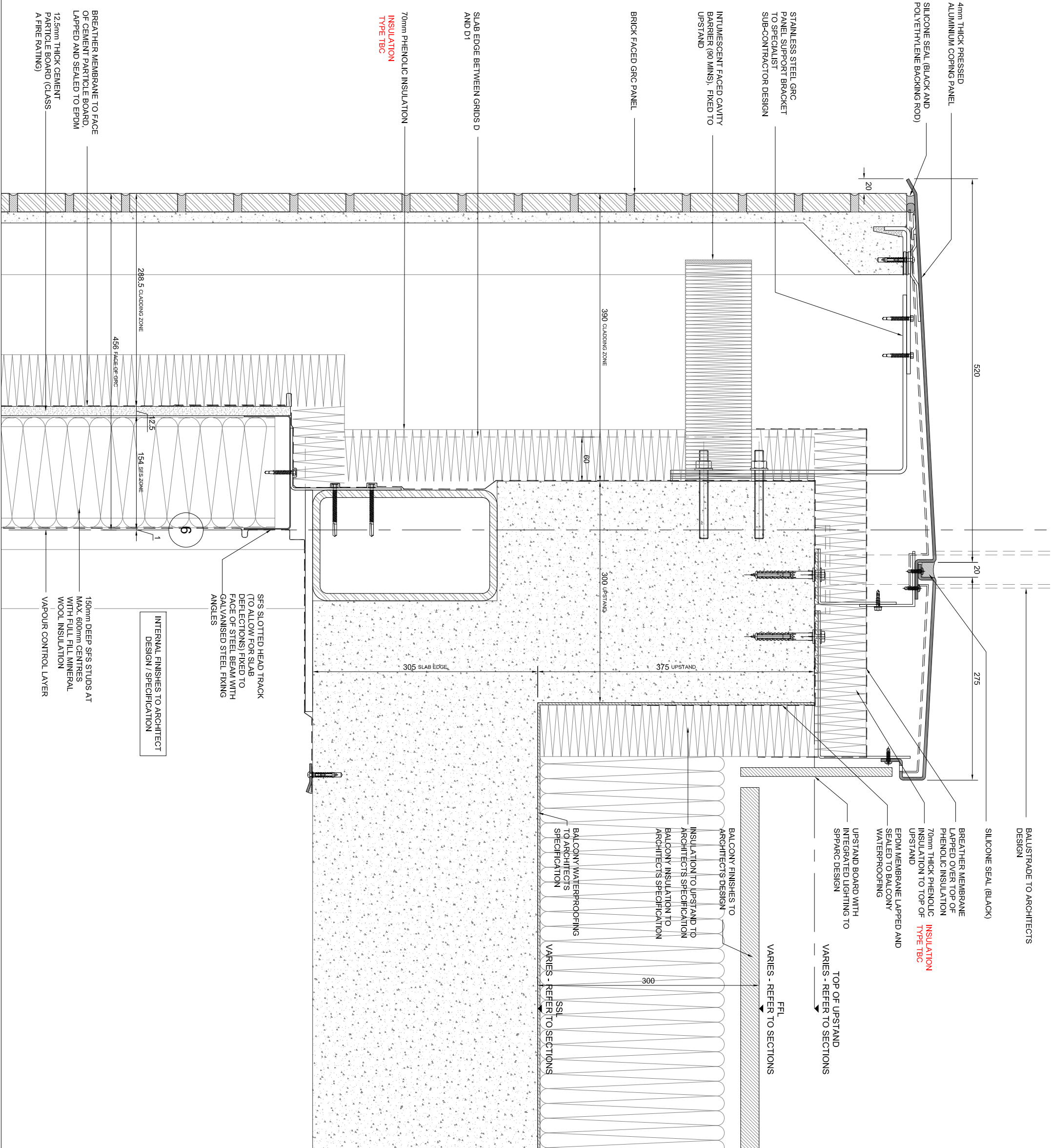
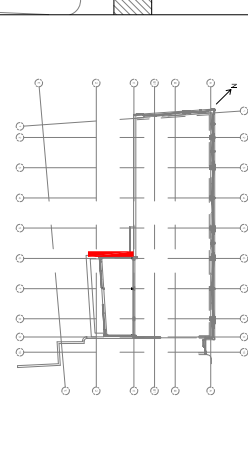
CONTRACTORS ARE RESPONSIBLE FOR SATISFYING THEMSELVES THAT THE DIMENSIONS AND DETAILS SHOWN ON THE DRAWINGS ARE CORRECT AND COMPLIANT WITH THE SPECIFICATION PRIOR TO MANUFACTURE. REPORT OMISSIONS AND ERRORS TO WINTTECH.

CONTRACTORS ARE TO ENSURE THAT ALL COMPONENTS FORMING PART OF THEIR WORKS ARE FABRICATED AND INSTALLED IN ACCORDANCE WITH THE MANUFACTURERS RECOMMENDATIONS.

ALL ELEVATIONS VIEWED FROM THE OUTSIDE UNLESS OTHERWISE STATED

DETAIL NUMBER	VENT / DOOR LEAF
DETAIL DRAWING	HINGE
	HINGE

KEY PLAN



BREATHER MEMBRANE TO FACE OF CEMENT PARTICLE BOARD, LAPPED AND SEALED TO EPDM

12.5mm THICK CEMENT PARTICLE BOARD (CLASS A FIRE RATING)

02 CONSTRUCTION ISSUE	14.07.17	MAV	CA
01 ISSUED FOR INFORMATION	06.06.17	MAV	CA
No Revision	Date	Initial	Chkd

WINTTECH
 FACADE ENGINEERING CONSULTANCY
 Quarry House, Ponderford Business Park,
 Woburn Road, Wotton Bassett, W19 9 5HA
 Tel: +44(0)1902 307430 Email: enquiries@winttechgroup.co.uk
 Project Name: 182 - 184 HIGH HOLBORN,
 LONDON

Drawing Title: EMS-03: VERTICAL SECTION THROUGH PARAPET

Status: CONSTRUCTION Scale: 1:15 @ A3 Date: 06.06.17

Project No.: 02164 Drawing No.: D-325 Rev.: 02