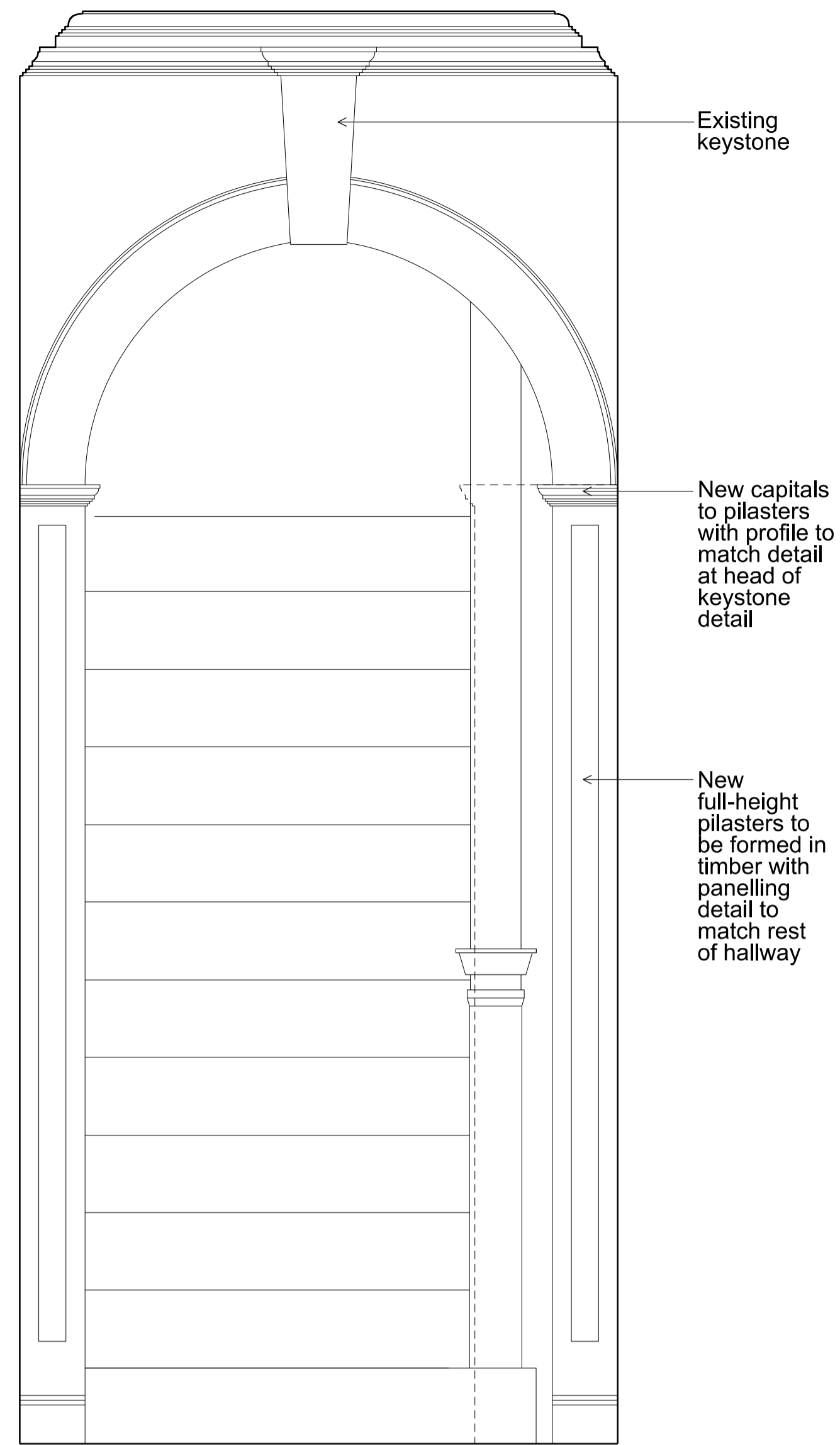




New capitals to pilasters with profile to match detail at head of 'keystone' detail



Existing keystone

New capitals to pilasters with profile to match detail at head of keystone detail

New full-height pilasters to be formed in timber with panelling detail to match rest of hallway



03 X_506 Precedent Archway in Hallway
21 Dombey Street - built c. 1709

Timber coving detail to arch

Capitals match high-level cornice

Full-height pilasters to delineate change from hallway to stairwell

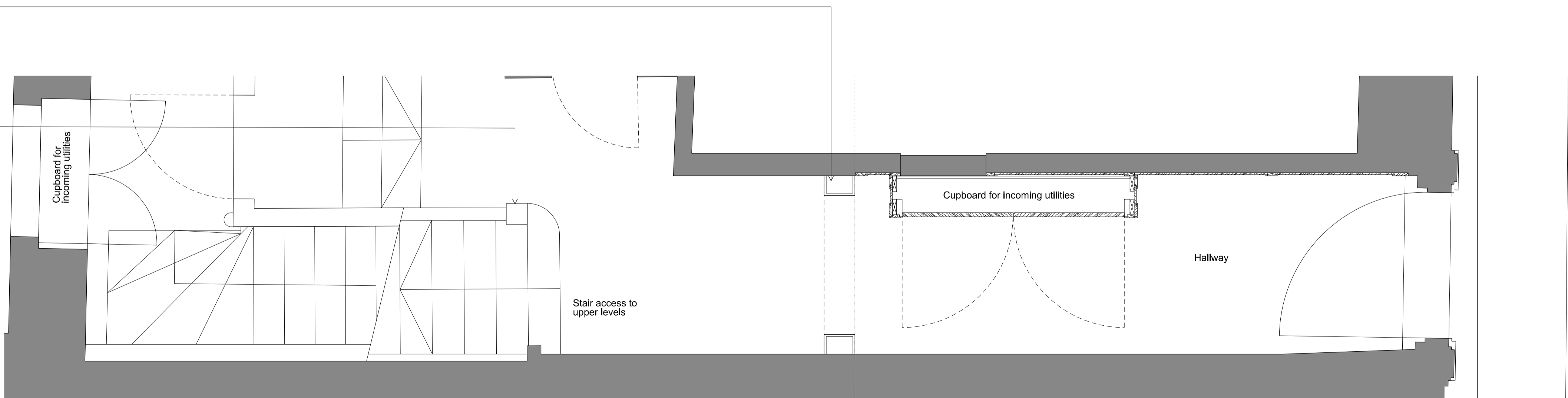


01 X_506 Existing Internal Elevation
Ground Floor Hallway - Showing arch and lost detailing

02 X_506 Proposed Internal Elevation
Ground Floor Hallway - Showing reinstated arch coving and pilasters 1:10

New full-height pilasters to be formed in timber with panelling detail to match rest of hallway

Newel post and balustrade reinstated



03 X_506 Proposed Typical Riser to Spine Wall
Plan Detail

Denmark Street

Scale 1:5
0 0.1 0.2 Metres

Revisions	
01	Issued to LBC 15.09.17
Client Consolidated Ltd.	
Project St. Giles Circus - Zone 3	
Drawing Title 9 Denmark Street Proposed Detail Reinstatement of Arch Detail to Hallway	
Drawing Number 1401_9D(X)506	
Scale	VARIOUS@A1 Status APPROVAL
Drawn by	EW Date 08.09.2017
Do not scale. All dimensions to be confirmed on site. Information contained in this drawing is the sole copyright of Ian Chalk Architects and is not to be reproduced without permission.	
All internal layouts are for illustrative purposes only.	