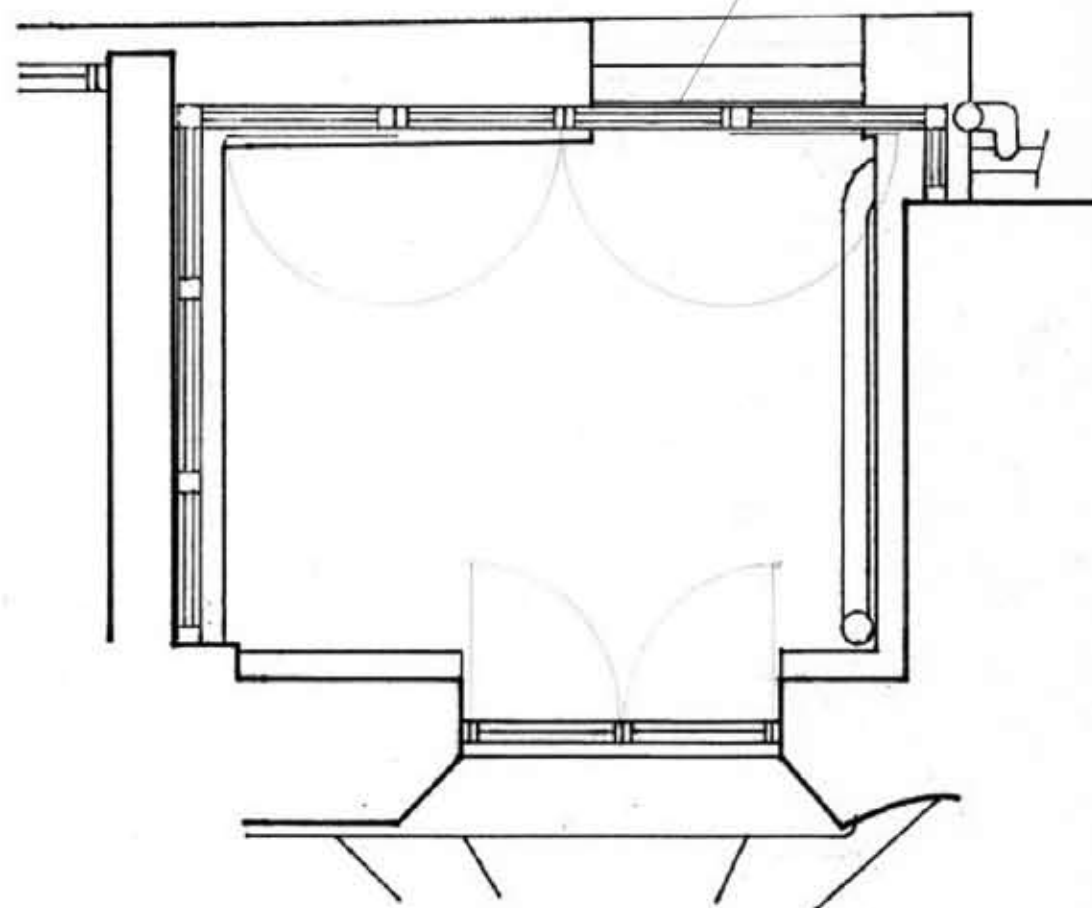


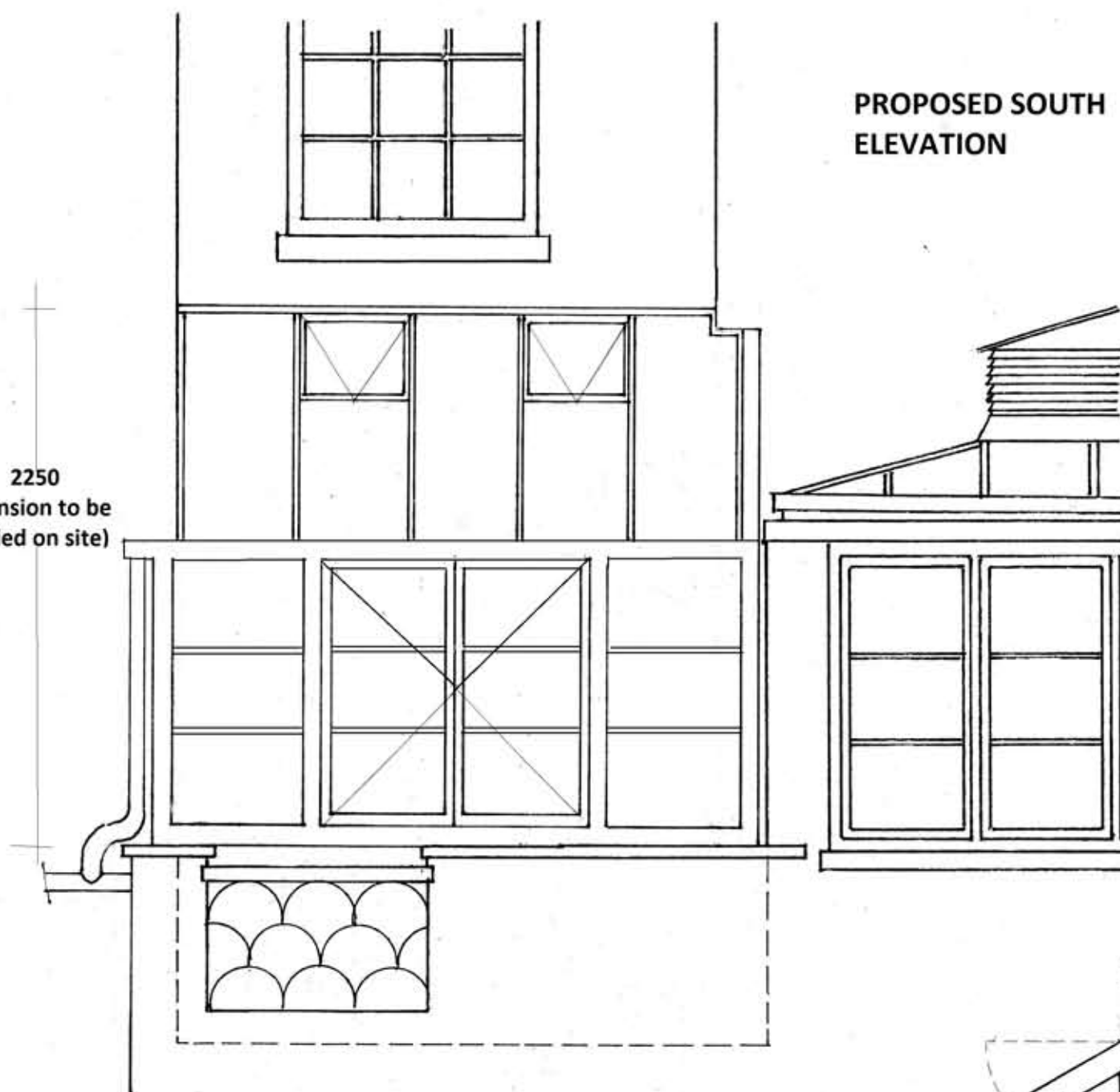
**PROPOSED PLAN OF CONSERVATORY  
AT WINDOW LEVEL**

Note: conservatory facade  
sits behind perforated  
parapet screen



2250  
(dimension to be  
verified on site)

**PROPOSED SOUTH  
ELEVATION**



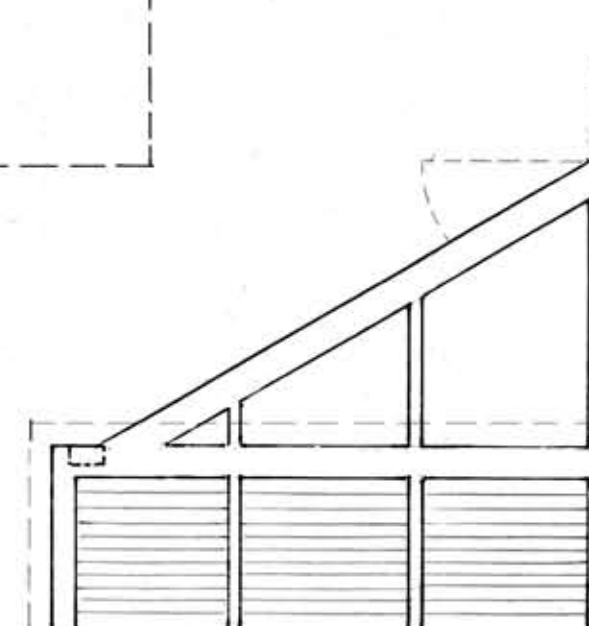
MARTIN LIPSON ASSOCIATES  
ARCHITECT AND CONSERVATION ADVISERS

STEEPLE ASTON, OXFORDSHIRE OX25 4SR  
martin.lipson@btinternet.com

192 REGENTS PARK ROAD, LONDON NW.1  
PROPOSED REINSTATEMENT OF CONSERVATORY  
FOR LIZ HEAVENSTONE

**RPR17. 2<sup>C</sup>**  
SEPTEMBER 2017  
SCALE 1:25

PROPOSED CONSERVATORY PLAN AND  
ELEVATIONS



**PROPOSED EAST ELEVATION**  
masked by adjacent conservatory