

**General Notes**  
 All dimensions to be verified on site  
 To be read in conjunction with all relevant documents  
 In the event of discrepancy notify the Architect immediately  
 This document is copyright of Hugh Cullum Architects Ltd

**Issue Status**  
 SK Sketch                    E Existing Condition  
 D Design                    P Permissions  
 T Tender                    C Contract

Dotted line shows the outline of dormer on No1

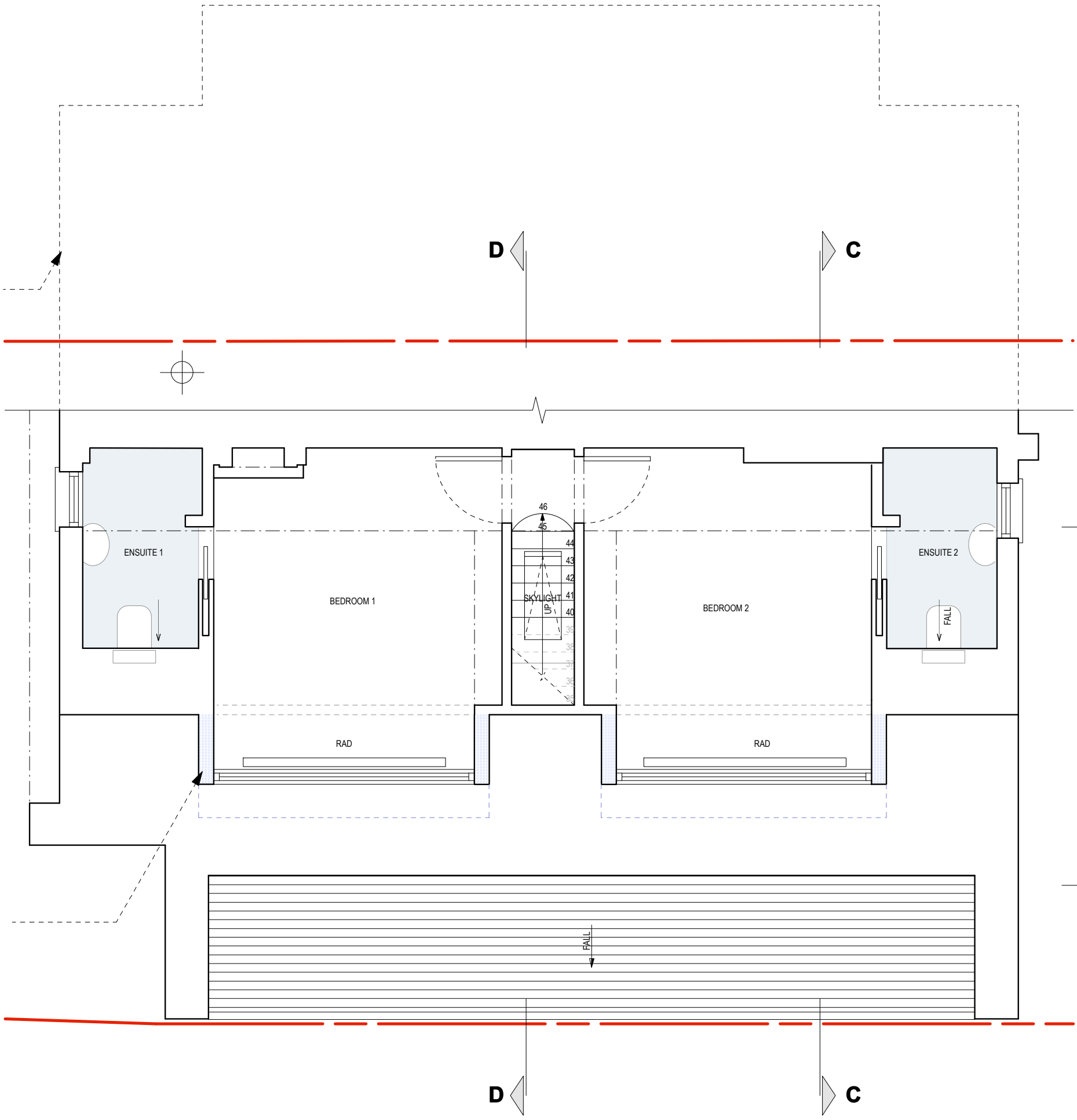
**B**

**B**

**A**

**A**

Two identical dormers either side of the existing staircase



(C): Dormers moved back appr 400mm (27.09.17/OA/HC)  
 (B): Dormer Windows amended (26.09.17/OA/HC)  
 (A): Dormers Reconfigured to two smaller ones (22.09.17/OA/HC)  
 ( ): Issued for Planning (14.08.17/OA/HC)  
 ( ): Revision Information (00.00.02/AA/BB)  
 Revision: Information (date/drawn by/checked by)

0m 0.5m 1m 5m



**AS PROPOSED** \_ Second Floor Layout

**HUGH CULLUM ARCHITECTS LTD**  
 Bloomsbury Design  
 61b Judd Street  
 London WC1H 9QT  
 t 020 7383 7647  
 f 020 7387 7645  
 mail@hughcullum.com

**2 Provost Road**  
 Planning Proposal  
 Second Floor  
 1:50@A3 August 2017  
**PR002-P113(C)**