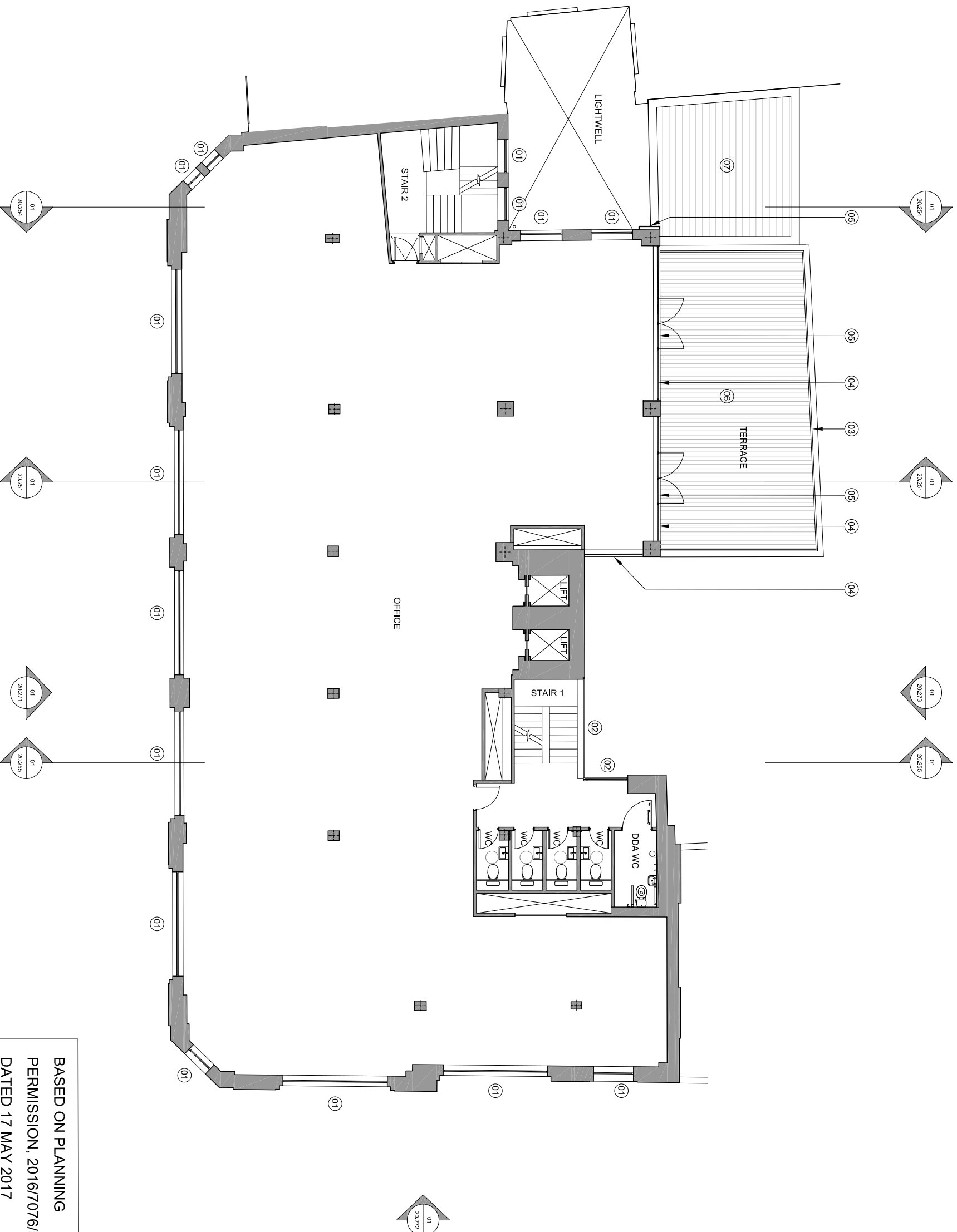


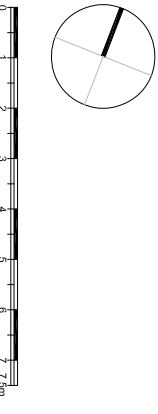
**Notes:**

- Existing white metal framed window. Framing spray painting. Colour: Dark grey, RAL: 7043.
- Existing white metal curtain walling. Framing spray painting. Colour: Dark grey, RAL: 7043.
- New frameless glass balustrade with s/s top rail.
- New metal framed curtain walling. Colour: Dark grey, RAL: 7043.
- New metal framed glazed doors. Colour: Dark grey, RAL: 7043.
- External terrace with decking finish.
- New PPC acoustic metal louvered roof to plant enclosure below.
- New PPC metal clad tray containing plant cables. Colour: Light grey, RAL: 9006.



**BASED ON PLANNING  
 PERMISSION, 2016/7076/P,  
 DATED 17 MAY 2017**

01  
 Consented Fifth Floor Plan  
 Scale 1:150 @ A3  
 20.207



**For Planning**

Rev.	Description	By	Date
P1	Issued For Non-Material Amendment T1		19.09.17

**Client**  
 BC Noho Limited

**Project**  
 Cleveland Street

**Title**  
 Consented Fifth Floor Plan

Project No.	Drawing No.	Rev.
1621.2	20.207	P1

Scale	Drawn	Checked	Date
1:75 @ A1	TL	TL	08.09.17

Do not scale from this drawing. The Contractor is to take and check all dimensions on site before work commences. Discrepancies must be reported to the Architect. Subcontractors must verify all dimensions on site before making a shop drawing or commencing manufacturing. This drawing is copyright. ©