



RIGHT OF LIGHT
CONSULTING
Chartered Surveyors

Right of Light Consulting

Burley House
15-17 High Street
Rayleigh
Essex
SS6 7EW

TEL 0800 197 4836

E-MAIL enquiries@right-of-light.co.uk

WEBSITE www.right-of-light.co.uk

Daylight and Sunlight Study (Within Development)
26 Netherhall Gardens, London NW3 5TL

23 May 2017



RICS

The mark of
property professionalism worldwide

Right of Light Consulting

Burley House
15-17 High Street
Rayleigh
Essex SS6 7EW

Tel: 0800 197 4836

DAYLIGHT AND SUNLIGHT STUDY
26 Netherhall Gardens, London NW3 5TL

CONTENTS

1 EXECUTIVE SUMMARY2

1.1 Overview2

2 INFORMATION SOURCES3

2.1 Documents Considered3

3 METHODOLOGY OF THE STUDY4

3.1 BRE Guide : Site Layout Planning for Daylight and Sunlight.....4

3.2 Interior Daylighting.....4

3.3 Sunlight to Windows6

4 RESULTS OF THE STUDY8

4.1 Window Reference Points.....8

4.2 Numerical Results and No Sky Line Contours8

4.3 Interior Daylighting.....8

4.4 Sunlight to Windows8

4.5 Conclusion.....8

5 CLARIFICATIONS9

5.1 General.....9

5.2 Project Specific.....9

APPENDICES

APPENDIX 1 WINDOW KEY

APPENDIX 2 DAYLIGHT AND SUNLIGHT CALCULATIONS

APPENDIX 3 NO SKY LINE CONTOURS

1 EXECUTIVE SUMMARY

1.1 Overview

- 1.1.1 Right of Light Consulting has been commissioned to undertake a daylight and sunlight study in connection with the development at 26 Netherhall Gardens, London NW3 5TL. The aim of the study is to check whether or not the proposed lower ground floor receives satisfactory levels of daylight and sunlight.
- 1.1.2 The study is based on the numerical tests laid down in the Building Research Establishment (BRE) guide 'Site Layout Planning for Daylight and Sunlight: a good practice guide' by P J Littlefair 2011.
- 1.1.3 Appendix 1 identifies the windows analysed in this study. The numerical test results (including all calculation workings) are provided in Appendix 2. No sky line contours are presented in Appendix 3.
- 1.1.4 Right of Light Consulting confirms that the proposed design satisfies all of the requirements set out in the BRE guide 'Site Layout Planning for Daylight and Sunlight'.

2 INFORMATION SOURCES

2.1 Documents Considered

2.1.1 This report is based on the following drawings:

Squire and Partners

C645_E_E_001	Proposed East Elevation	Rev B
C645_E_N_001	Proposed North Elevation	Rev B
C645_E_S_001	Proposed South Elevation	Rev B
C645_E_W_001	Proposed West Elevation	Rev B
C645_P_LG_001	Proposed Lower Ground Floor	Rev B
C645_S_AA_001	Proposed Section AA	Rev B
GC645_S_CC_001	Proposed Section CC	Rev B

3 METHODOLOGY OF THE STUDY

3.1 BRE Guide : Site Layout Planning for Daylight and Sunlight

3.1.1 The study is based on the numerical tests laid down in the Building Research Establishment (BRE) guide 'Site Layout Planning for Daylight and Sunlight: a good practice guide' by P J Littlefair 2011.

3.1.2 The standards set out in the BRE guide are intended to be used flexibly. In instances where there is a special requirement for daylight or sunlight, higher levels may be deemed necessary. In other situations, such as with urban developments, lower daylight and sunlight levels may be unavoidable. The following statement is quoted directly from the BRE guide:

3.1.3 "The guide is intended for building designers and their clients, consultants and planning officials. The advice given is not mandatory and this document should not be considered as an instrument of planning policy. Its aim is to help rather than constrain the designer. Although it gives numerical guidelines, these should be interpreted flexibly because natural lighting is only one of the many factors in site layout design."

3.2 Interior Daylighting

3.2.1 The interior daylighting recommendations set out in BRE guide are based on British Standard BS 8206 Part 2 and the Chartered Institute of Building Services Engineers Applications Manual on window design. Collectively, the guides set out three main criteria for interior daylighting. These are summarised as follows:

3.2.2 Test 1 Average Daylight Factor (df)

The Average Daylight Factor can be calculated using the following formula:

$$df = \frac{T A_w \theta}{A (1-R^2)} \%$$

Where

- T is the diffuse visible transmittance of the glazing (BRE standard of 0.68)
- A_w is the net glazed area of the window (m²)
- A is the total area of the room surfaces (m²)
- R is their average reflectance
- θ is the angle of visible sky in degrees

The Average Daylight factor test is applied to habitable rooms within domestic properties. A kitchen is generally deemed to be a habitable room if it is large enough to accommodate a dining area. If the kitchen is small or if the property has a separate dining area then the accepted practice is to treat the kitchen as a non habitable room.

For the purpose of this study we have assumed BRE internal reflectance values pertaining to medium wooden floors, light painted walls and white painted ceilings and mirrored walls for light wells servicing Bedrooms 1 and 3 of Duplex 2.

The guide recommends an Average Daylight Factor of 5% or more if there is no supplementary electric lighting, or 2% or more if supplementary lighting is provided. There are additional minimum recommendations for dwellings of 2% for kitchens, 1.5% for living rooms and 1% for bedrooms.

A special procedure is required for floor to ceiling windows such as patio doors. If part of a window is below the height of the working plane (a horizontal plane 0.85m above the floor in housing), this portion should be treated as a separate window. The ADF for this window has an extra factor applied to it, to take account of the reduced effectiveness of low level glazing in lighting the room. A value equal to the floor reflectance may be taken for this factor. The ADF for the portion of the window above the working plane is calculated in the normal way without this additional factor, and the ADFs for the two portions are added together.

3.2.3 Test 2 Room Depth

If a daylit room is lit by windows in one wall only, the depth of the room L should not exceed the limiting value given by:

$$\frac{L}{W} + \frac{L}{H} \leq \frac{2}{1-R_b}$$

Where

W is the room width
H is the window-head height above floor level
R_b is the average reflectance of the surfaces in the rear half of the room

3.2.4 Test 3 Position of the no sky line

If a significant area of the working plane lies beyond the no sky line (i.e. it receives no direct skylight), then the distribution of daylight in the room will look poor and supplementary electric lighting will be required.

The no sky line assessment is not applicable where a room derives its daylight solely from a light well or atrium. In these situations the room relies on borrowed light instead of direct skylight.

3.3 Sunlight to Windows

3.3.1 The BRE guide recommends that where possible each dwelling should have at least one main living room window that faces within 90 degrees of due south. However, the guide acknowledges that this is not always possible when it comes to flats.

3.3.2 The BRE sunlight tests should be applied to all main living rooms and conservatories which have a window which faces within 90 degrees of due south. The guide states that sunlight is viewed as less important in kitchens and bedrooms. In non-domestic buildings, any spaces which are deemed to have a specific requirement for sunlight should be checked.

3.3.3 The BRE guide recommends that main living room windows should receive 25% of the total annual probable sunlight hours, including 5% of the annual probable sunlight hours during the winter months between 21st September and 21st March.

3.4 Overshadowing to Gardens and Open Spaces

3.4.1 The availability of sunlight should be checked for all open spaces where sunlight is required. This would normally include:

- Gardens, usually the main back garden of a house
- Parks and playing fields
- Children's playgrounds
- Outdoor swimming pools and paddling pools
- Sitting out areas, such as those between non-domestic buildings and in public squares
- Focal points for views such as a group of monuments or fountains.

3.4.2 The BRE guide recommends that for an open space to appear adequately lit throughout the year, at least 50% of its area should receive two hours of sunlight on 21st March.

4 RESULTS OF THE STUDY

4.1 Window Reference Points

4.1.1 Refer to Appendix 1 for a drawing which identifies the positions of the windows analysed in this study. We have tested the windows at the lower ground floor level on the basis that, if these satisfy the BRE requirements, the windows at the upper levels will surpass the BRE minimum requirements by an even greater margin.

4.2 Numerical Results and No Sky Line Contours

4.2.1 The numerical test results including all calculation workings are provided in Appendix 2. No sky line contours for the habitable rooms are presented in Appendix 3.

4.3 Interior Daylighting

4.3.1 All rooms meet or surpass the BRE Average Daylight Factor targets.

4.3.2 All rooms pass the room depth test.

4.3.3 The BRE guide does not give fixed numerical pass/fail criteria for the No Sky Line test when applied to new dwellings (guidance is given for when this test is applied to existing neighbouring buildings). However, for completeness, we have illustrated the no sky line contours in Appendix 3.

4.4 Sunlight to Windows

4.4.1 Under the BRE guidelines, the main requirement for sunlight is in living rooms. The windows in the lower ground floor serve bedrooms which are not required to be tested.

4.5 Conclusion

4.5.1 Right of Light Consulting confirms that the proposed design satisfies all of the requirements set out in the BRE guide 'Site Layout Planning for Daylight and Sunlight'.

5 CLARIFICATIONS

5.1 General

- 5.1.1 The report provided is solely for the use of the client and no liability to anyone else is accepted.
- 5.1.2 We have undertaken the survey following the guidelines of the RICS publication “Surveying Safely”.
- 5.1.3 Where limited access is available, reasonable assumptions will have been made.
- 5.1.4 Right of Light Consulting have endeavoured to include in the report those matters, which they have knowledge of or of which they have been made aware, that might adversely affect the validity of the opinion given.
- 5.1.5 Right of Light Consulting will notify those instructing them immediately and confirm in writing if for any reason the report requires any correction or qualification.
- 5.1.6 Right of Light Consulting confirm that they have used their best endeavours to ensure that the facts stated in this report are correct and that the opinions expressed represent a true and complete professional opinion.

5.2 Project Specific

- 5.2.1 None.

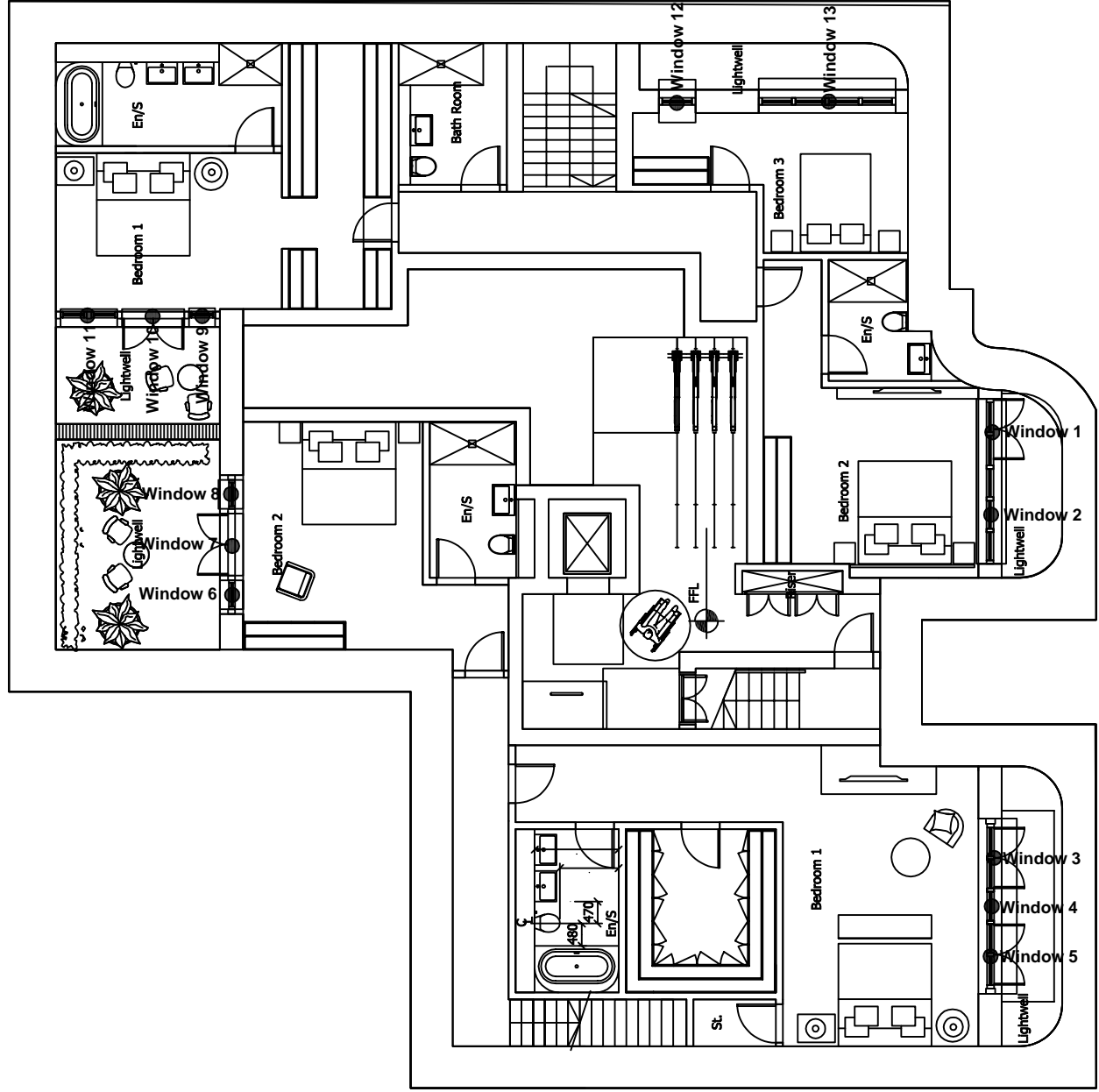
APPENDICES

APPENDIX 1

WINDOW KEY

Key:

Window 1 ● Window reference



Project Name: 26 Netherhall Gardens, London N3 5TL

Drawing Title: Window Key

Scale: Do not scale

Drawing No: 1 of 1 Rev. -

Rev Date Details of revision



Burley House
15 - 17 High Street
Rayleigh
Essex SS6 7EW

Tel: 0800 197 4836

enquiries@right-of-light.co.uk
www.right-of-light-consulting.com

APPENDIX 2

DAYLIGHT AND SUNLIGHT CALCULATIONS

**Appendix 2 - Average Daylight Factor (ADF)
26 Netherhall Gardens, London NW3 5TL**

Reference	Target ADF based on room use Primary room use	ADF	T	Aw	A	R	Theta	Actual ADF ADF	Result
Proposed Lower Ground Floor									
Window 2 (lower)			0.65	1.14	99.53	0.69	18.7	0.1%	
Window 2 (upper)			0.65	2.72	99.53	0.69	30.9	1.0%	
Window 1 (lower)			0.68	0.8	99.53	0.69	17.5	0.1%	
Window 1 (upper)			0.68	1.91	99.53	0.69	28.5	0.7%	
Total ADF for room	Duplex 2 Bedroom 2	1.0%						1.9%	Pass
Window 5 (lower)			0.65	0.89	158.47	0.69	15.4	0.0%	
Window 5 (upper)			0.65	2.18	158.47	0.69	21.0	0.4%	
Window 4 (lower)			0.68	0.42	158.47	0.69	14.1	0.0%	
Window 4 (upper)			0.68	1.03	158.47	0.69	19.0	0.2%	
Window 3 (lower)			0.68	0.89	158.47	0.69	15.3	0.0%	
Window 3 (upper)			0.68	2.18	158.47	0.69	21.3	0.4%	
Total ADF for room	Duplex 1 Bedroom 1	1.0%						1.0%	Pass
Window 6 (lower)			0.65	0.37	100.01	0.69	17.8	0.0%	
Window 6 (upper)			0.65	0.81	100.01	0.69	20.5	0.2%	
Window 7 (lower)			0.65	0.83	100.01	0.69	18.9	0.1%	
Window 7 (upper)			0.65	1.77	100.01	0.69	22.7	0.5%	
Window 8 (lower)			0.65	0.37	100.01	0.69	16.7	0.0%	
Window 8 (upper)			0.65	0.81	100.01	0.69	23.4	0.2%	
Total ADF for room	Duplex 1 Bedroom 2	1.0%						1.1%	Pass
Window 9 (lower)			0.65	0.34	123.8	0.7	17.2	0.0%	
Window 9 (upper)			0.65	0.74	123.8	0.7	20.0	0.2%	
Window 11 (lower)			0.65	0.74	123.8	0.7	17.1	0.0%	
Window 11 (upper)			0.65	1.61	123.8	0.7	20.1	0.3%	
Window 10 (lower)			0.65	0.8	123.8	0.7	17.6	0.0%	
Window 10 (upper)			0.65	1.77	123.8	0.7	20.6	0.4%	
Total ADF for room	Duplex 2 Bedroom 1	1.0%						1.0%	Pass
Window 12 (lower)			0.65	0.44	75.96	0.67	12.2	0.0%	
Window 12 (upper)			0.65	1.06	75.96	0.67	15.4	0.3%	
Window 13 (lower)			0.65	1.64	75.96	0.67	13.6	0.2%	
Window 13 (upper)			0.65	3.92	75.96	0.67	18.4	1.1%	
Total ADF for room	Duplex 2 Bedroom 3	1.0%						1.6%	Pass

Appendix 2 - Room Depth Calculation
26 Netherhall Gardens, London NW3 5TL

Room	Room Depth Coefficients			Room Depth Calculation		Result
	L	W	H	$L/W + L/H$	$2/1-Rb$	
<u>Proposed Lower Ground Floor</u>						
Window 1	4.6	6.5	2.5	2.55 <=	6.39	Pass
Window 2	4.6	6.5	2.5	2.55 <=	6.39	Pass
Window 3	9.9	6.4	2.5	5.51 <=	6.42	Pass
Window 4	9.9	6.4	2.5	5.51 <=	6.42	Pass
Window 5	9.9	6.4	2.5	5.51 <=	6.42	Pass
Window 6	5.7	4.9	2.5	3.44 <=	6.53	Pass
Window 7	5.7	4.9	2.5	3.44 <=	6.53	Pass
Window 8	5.7	4.9	2.5	3.44 <=	6.53	Pass
Window 9	5.7	6.6	2.5	3.14 <=	6.71	Pass
Window 10	5.7	6.6	2.5	3.14 <=	6.71	Pass
Window 11	5.7	6.6	2.5	3.14 <=	6.71	Pass
Window 12	3.2	5.9	2.5	1.82 <=	6.15	Pass
Window 13	3.2	5.9	2.5	1.82 <=	6.15	Pass

APPENDIX 3


NO SKY LINE CONTOURS


Appendix 3 No Sky Line Contours

Proposed Lower Ground Floor

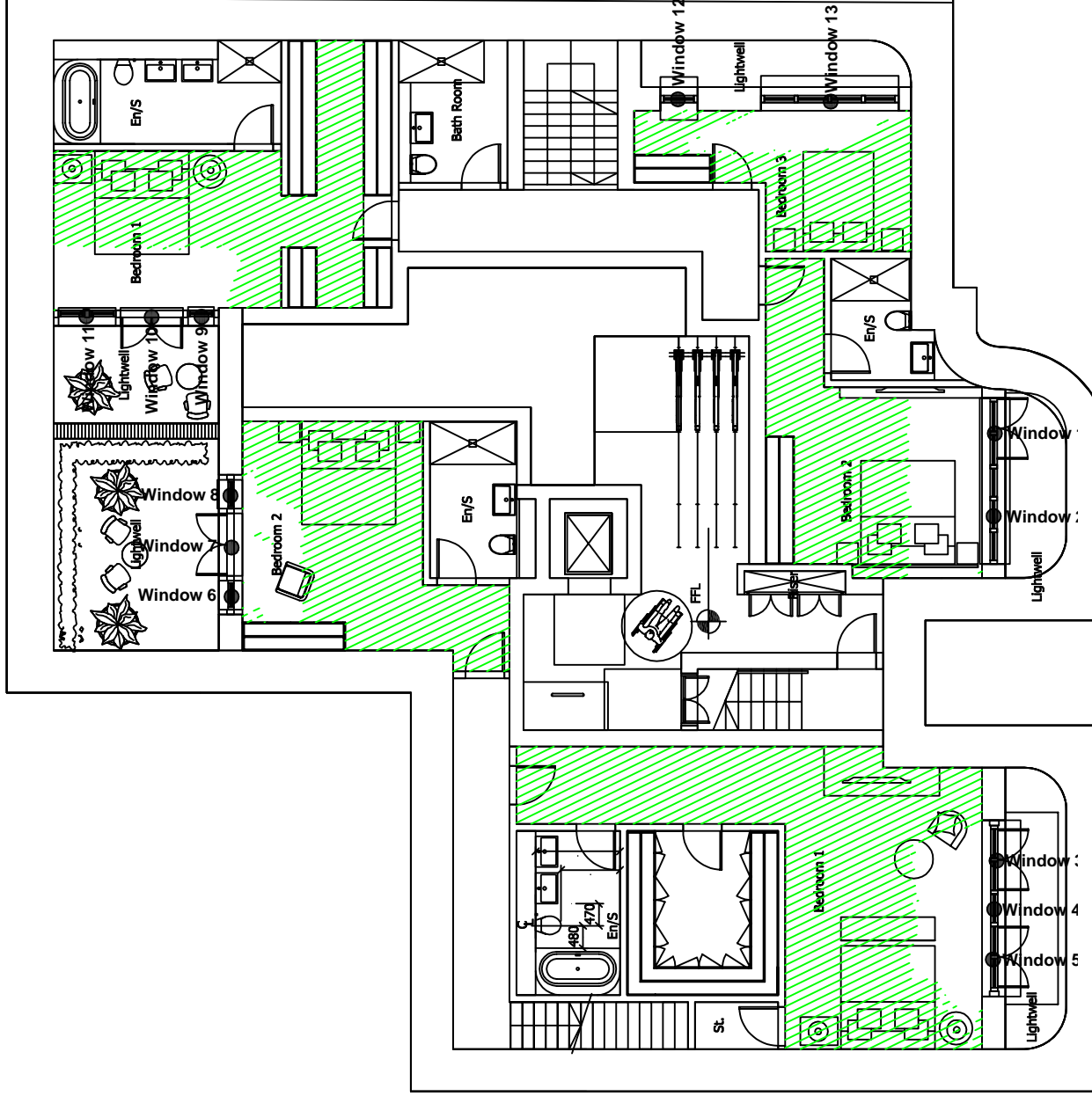
Key:

Window 1 ● Window reference

 Area receives no direct sky light (applied to habitable rooms)

 Area does receive direct sky light.

 Light aperture.



Project Name: **26 Netherhall Gardens, London N3 5TL**

Drawing Title: **No Sky Line Contours**

Scale: **Do not scale**

Drawing No: **1 of 1** Rev. -

Rev. Date Details of revision

Rev. Date Details of revision

Rev. Date Details of revision



Burley House
15 - 17 High Street
Rayleigh
Essex SS6 7EW

Tel. 0800 197 4836

enquiries@right-of-light.co.uk
www.right-of-light-consulting.com