

**1 SECTION DETAIL (LOWER WINDOW)**

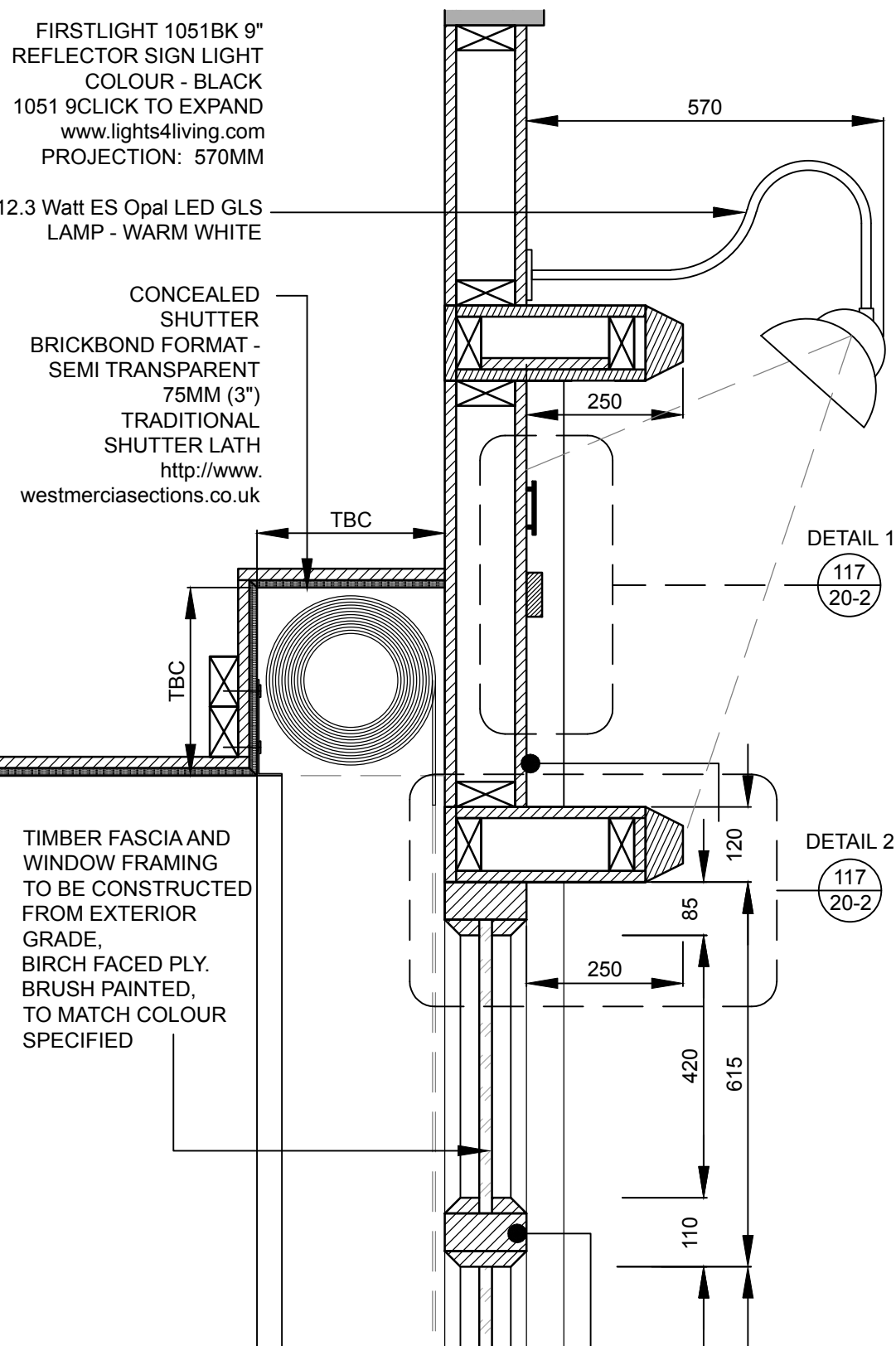
SCALE 1:10

FIRSTLIGHT 1051BK 9" REFLECTOR SIGN LIGHT  
COLOUR - BLACK  
1051 9CLICK TO EXPAND  
www.lights4living.com  
PROJECTION: 570MM

12.3 Watt ES Opal LED GLS LAMP - WARM WHITE

CONCEALED SHUTTER  
BRICKBOND FORMAT - SEMI TRANSPARENT  
75MM (3")  
TRADITIONAL SHUTTER LATH  
http://www.westmerciasections.co.uk

TIMBER FASCIA AND WINDOW FRAMING TO BE CONSTRUCTED FROM EXTERIOR GRADE, BIRCH FACED PLY. BRUSH PAINTED, TO MATCH COLOUR SPECIFIED



**2 SECTION DETAIL (UPPER WINDOW)**

SCALE 1:10

**NOTES**

DO NOT SCALE FROM DRAWING

ALL DIMENSIONS TO BE CHECKED AND VERIFIED ON SITE PRIOR TO MANUFACTURE OR CONSTRUCTION. CONTRACTOR TO REPORT ANY DISCREPANCIES TO LUMSDEN DESIGN IMMEDIATELY

CONTRACTOR TO PRODUCE SETTING OUT DRAWINGS OF ALL COMPONENTS FOR APPROVAL BY LUMSDEN DESIGN, PRIOR TO MANUFACTURE

ALL CONSTRUCTION, FIT OUT MATERIALS AND ELECTRICAL WORKS TO COMPLY WITH THE RELEVANT BUILDING REGULATIONS FOR THE COUNTRY WHERE THE INSTALLATION IS SITED.

IN THE EVENT THAT SUBSTITUTIONS OR ALTERATIONS ARE SUGGESTED THIS SHOULD BE DONE IN WRITING AND WRITTEN PERMISSION GRANTED PRIOR TO PROCEEDING.

MAINTAIN EXITS, EXIT LIGHTING, FIRE PROTECTIVE DEVICES AND ALARMS FOR DURATION OF WORK IN ACCORDANCE WITH APPLICABLE CODES AND ORDINANCES.

PROTECT AREA OF WORK AND ADJACENT AREAS OF WORK FROM DAMAGE FOR DURATION OF WORK. ALL DAMAGE DUE TO IMPROPER PROTECTION SHALL BE REPAIRED AT NO ADDITIONAL COST TO THE OWNER.

THE DRAWING AND THE WORKS DEPICTED ARE THE COPYRIGHT OF LUMSDEN DESIGN LTD AND MAY NOT BE REPRODUCED EXCEPT BY WRITTEN PERMISSION FROM A DIRECTOR OF LUMSDEN DESIGN LTD.

**MATERIALS LEGEND LISTED ON DRAWING 117-20-4**

REV	DATE	DESCRIPTION	BY
A	25-09-2017	LIGHT FITTING	CM

**Lumsden** 2 Cowcross Street  
London EC1M 6DR UK  
T +44(0)20 3384 1400

CLIENT HARRIET KELSALL

PROJECT PRIMROSE HILL

DRG PROPOSED SHOPFRONT DETAILS

DRG No. 117-20-1 REV A

SCALE 1:10 @ A3 DATE JULY 17

DRAWN BY CW

DRAWING STATUS

**INFORMATION**