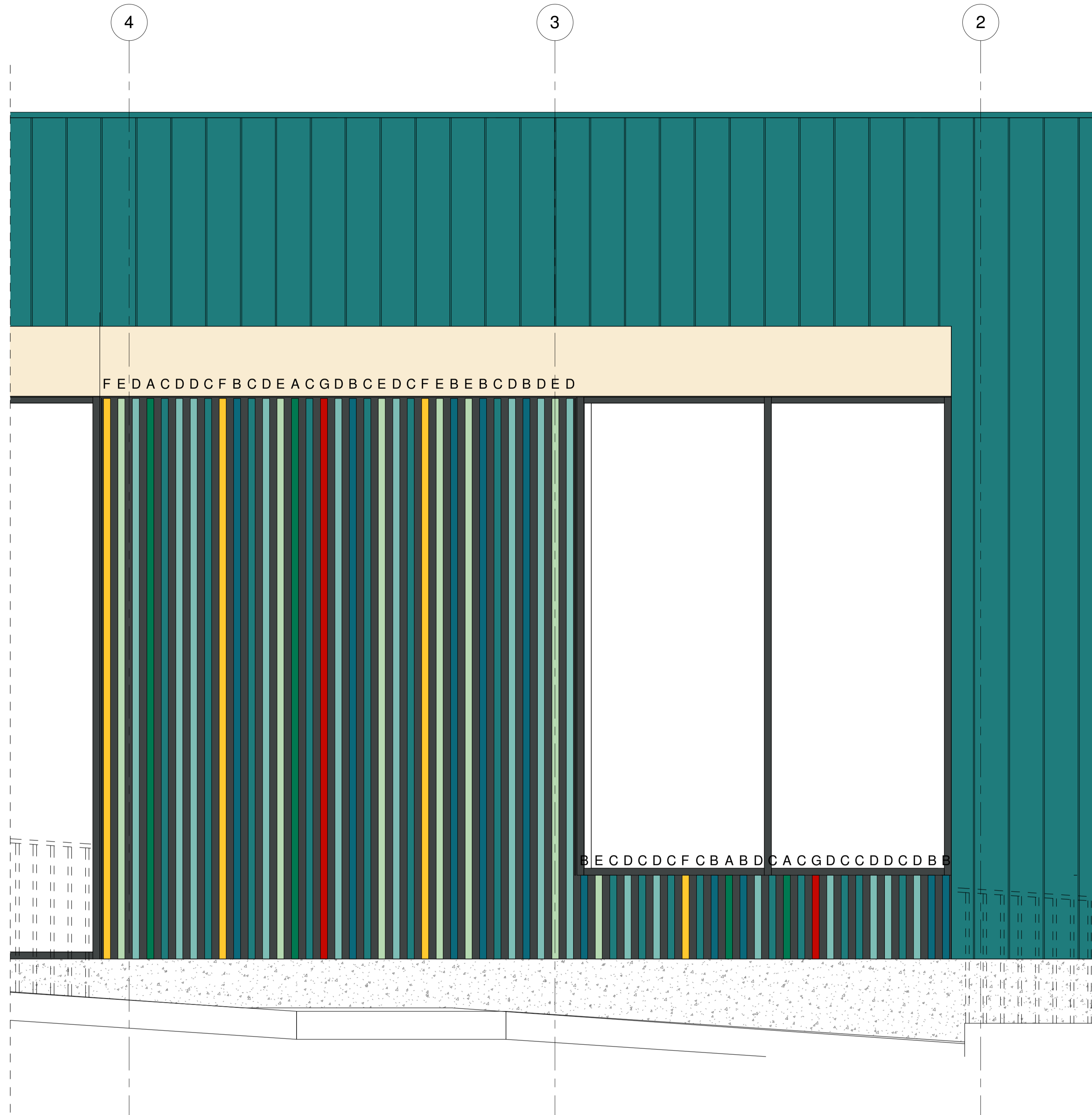
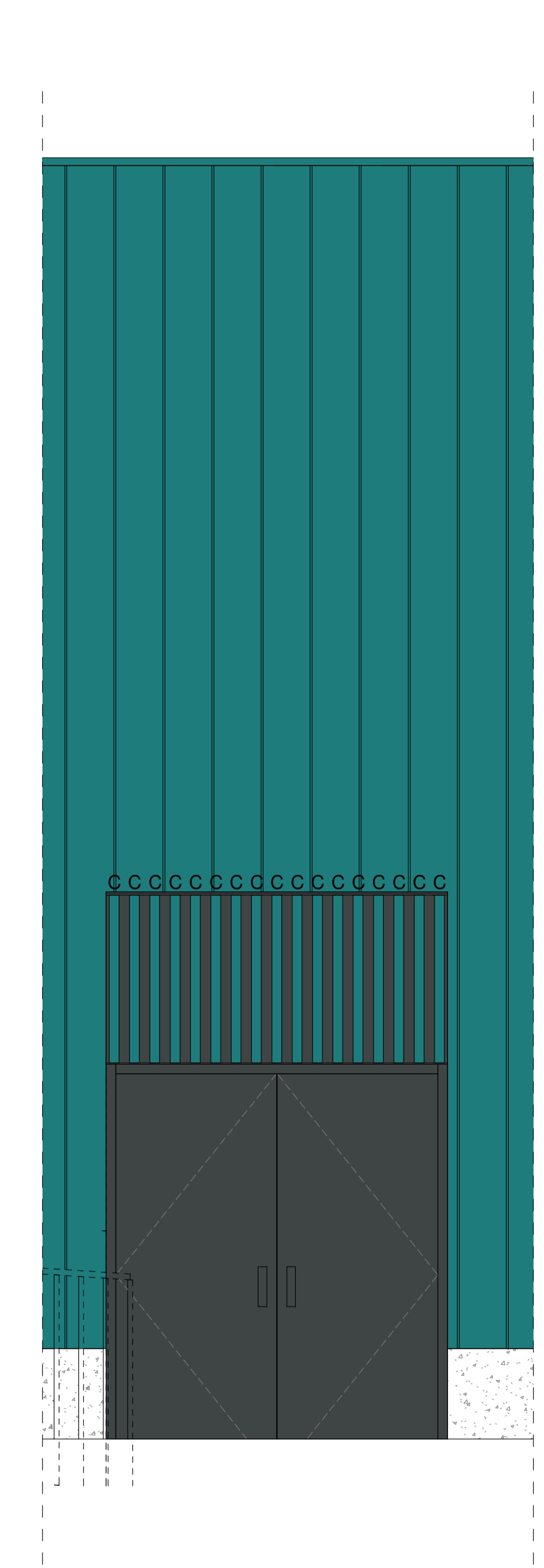


1
185 Podium colour study / Part 04
1 : 20



2
185 Podium colour study / Part 05
1 : 20



3
185 Podium colour study / Part 06
1 : 20

- (A) RAL 6000
- (B) RAL 5009
- (C) RAL 5021
- (D) RAL 6034
- (E) RAL 6019
- (F) RAL 1018
- (G) RAL 3001
- (H) RAL 7043

standard notes

1. Do not scale this drawing.
2. All dimensions must be checked on site and any discrepancies verified with the architect.
3. Unless shown otherwise, all dimensions are to structural surfaces.

THIS IS NOT A CONSTRUCTION DRAWING. IT IS UNSUITABLE FOR THE PURPOSE OF CONSTRUCTION AND MUST ON NO ACCOUNT BE USED AS SUCH.

drawing notes

DESIGN INTENT: These are design intent drawings and do not show full construction information. The Contractor must develop the details, without changing the visual, spatial or other performances, to provide a fully developed scheme including all concealed components such as wind posts, vapour barriers and cavity barriers. All dimensions on this drawing are taken to finished surfaces unless specifically indicated on the dimensions itself.

revisions		
P1	07.04.17	Issued for information

ASTOR COLLEGE, UCL

Charlotte Street, W1T 4QB

date 07/04/17
client UCL
scale As indicated
drawing Podium - colour study_03
drawn JM
checked JM
drawing number 2869-SK-185
rev P1

Levitt Bernstein
 1 Kingsland Passage
 London
 E8 2BB
 t: 020 7275 7676
 f: 020 7275 9348
 w: levittberstein.co.uk
 e: post@levittberstein.co.uk
 Levitt Bernstein

C:\Revit Local\2869_Astor College-CENTRAL_1wona.drobina.rvt