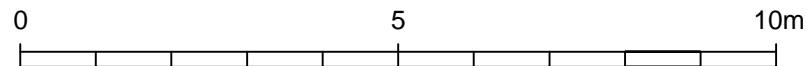


PROPOSED GARDEN ELEVATION (NORTH EAST) 1:100



Facing brickwork Ibstock Dinian Blend to fourth and fifth floor setbacks

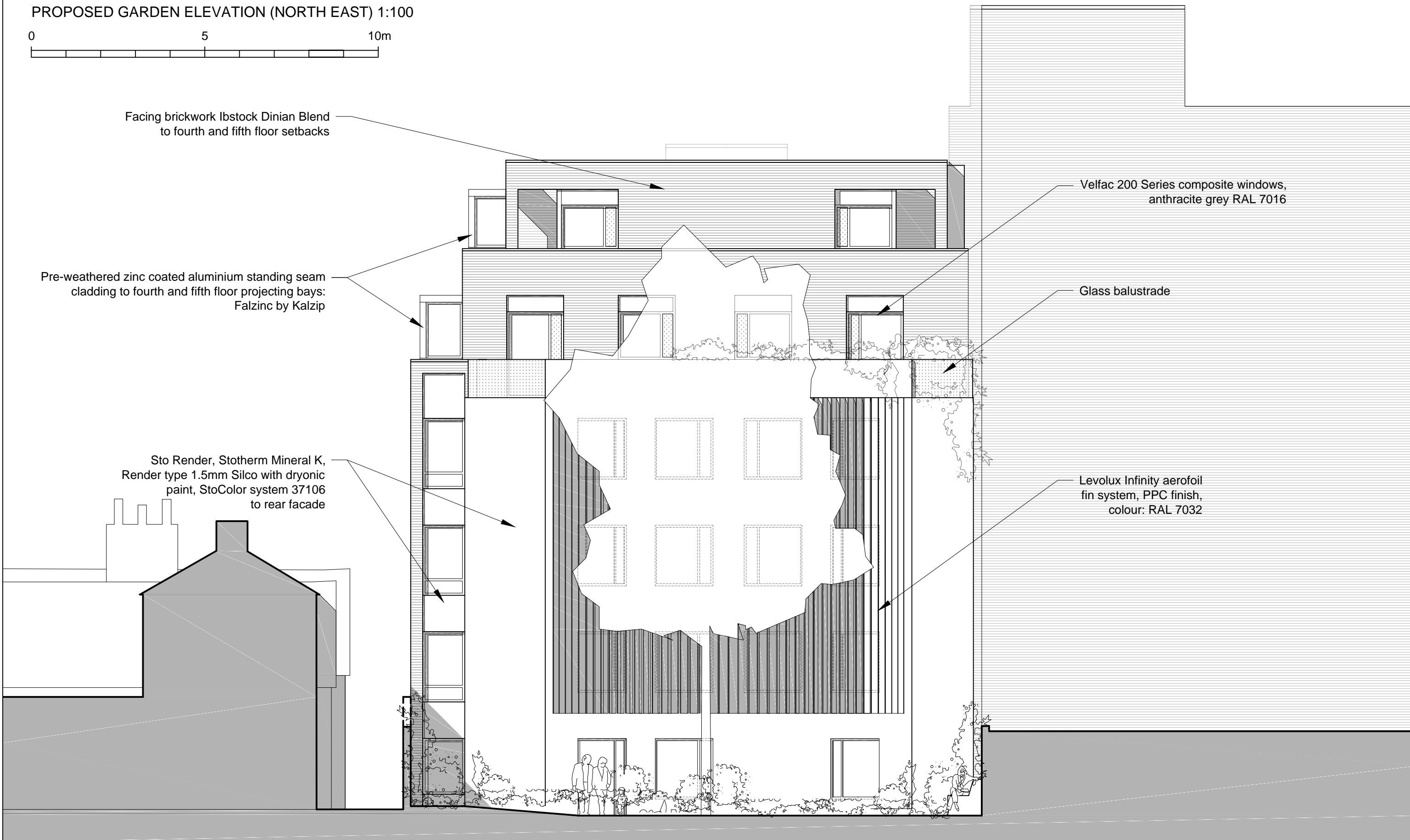
Pre-weathered zinc coated aluminium standing seam cladding to fourth and fifth floor projecting bays: Falzinc by Kalzip

Sto Render, Stotherm Mineral K, Render type 1.5mm Silco with dryonic paint, StoColor system 37106 to rear facade

Velfac 200 Series composite windows, anthracite grey RAL 7016

Glass balustrade

Levolux Infinity aerofoil fin system, PPC finish, colour: RAL 7032



DRAWING STATUS: **PLANNING ISSUE**

GENERAL NOTES:
 Do not scale the drawing. Use figured dimensions only.
 All dimensions to be checked on site prior to commencement of work or shop drawings.
 Drawing to be read in conjunction with specifications / schedules / bills of quantities.
 Any discrepancies must be reported to the architects immediately.
 Copyright of this document and the designs described is owned with the Method Architects.

REVISION NOTES:

rev	notes	date	initials
A	Material submission for planning	26.09.2017	AF

tel: 07815 862842
 email: info@methodarchitects.co.uk

CLIENT:	CAMDEN DEVELOPMENT CO LTD			
PROJECT:	5 - 6 CLIFF VILLAS			
DWG TITLE:	PROPOSED ELEVATIONS GARDEN ELEVATION - NORTH EAST			
SCALE:	1:100 @ A3	DATE	NOV 2013	DRAWN BY: - AUDITED BY: -
JOB No:	12-050	DWG NO:	PL 203	REV: A