

01 Shackleton House
Mansard Extension

Design and Access Statement



22nd September 2017

davidgarner.co.uk

Project Manager and Architect

07977 911 885

Shackleton House Chalton Street LONDON NW1 1RX UK

1 Design principles and concepts

Shackleton House is a contemporary 6 apartment building built in 2011. The top duplex flat has recently been split to form a new 2 bed flat at the third level and a separate open plan studio at fourth level.

The building has a set-back top floor with a flat roof.

It is proposed to build atop the studio flat to form a bedroom and shower room for the studio flat. Presently sleeping in the studio is by sofa bed in the single living, kitchen and dining space. Ablution space is cramped.

The new accommodation would be contained within a pitched mansard structure, finished in standing seam, fully supported grey roof finish. The aim is to lose the physical impact on the skyline of the accommodation by adopting a mansard roof solution.

The minimal fenestration is placed to align with the windows below. (And an emergency escape door aligned over the existing ladder escape over the lightwell on the inboard long south side. This can not be seen from the street.)

2 Appraisal of the context

The north end of Chalton Street is in the main built up with 20th century mansion blocks of 4, 5 and 6 levels.

As can be seen from the photographs included in the appendix, that there are many mansard roofs in the immediate neighbourhood.

Immediately opposite Shackleton House is St Christoph's mansion block that is 5 levels with a pitched mansard above. The mansard roof sits a storey level higher than the existing roof atop Shackleton House.

Immediately adjacent to the north of Shackleton House is the four level Sussex House which has a welsh blue black slate on a pitched roof.

To the south of Shackleton House is the 2011 built Regents School gymnasium and youth centre. The parapet of which is at 11m above pavement, just over 1m lower than Shackleton House parapet. The gymnasium roof is a plant deck.

To the rear of Shackleton House is the recently completed Regents school, comprised of a number of building blocks the highest of which is 16.650m. It separates Shackleton House for the conservation area of Charrington Street to the north-east.

The Regent school drawing as seen in the appendix, demonstrates the comparative height of existing buildings.

3 Access

Access into the bedroom atop would be by a new staircase rising from inside the existing studio flat.

The existing studio flat is car-free and so no vehicle parking is allowed.

Appendix 1

Photographs showing existing fenestrated mansards adjacent on Chalton Street.





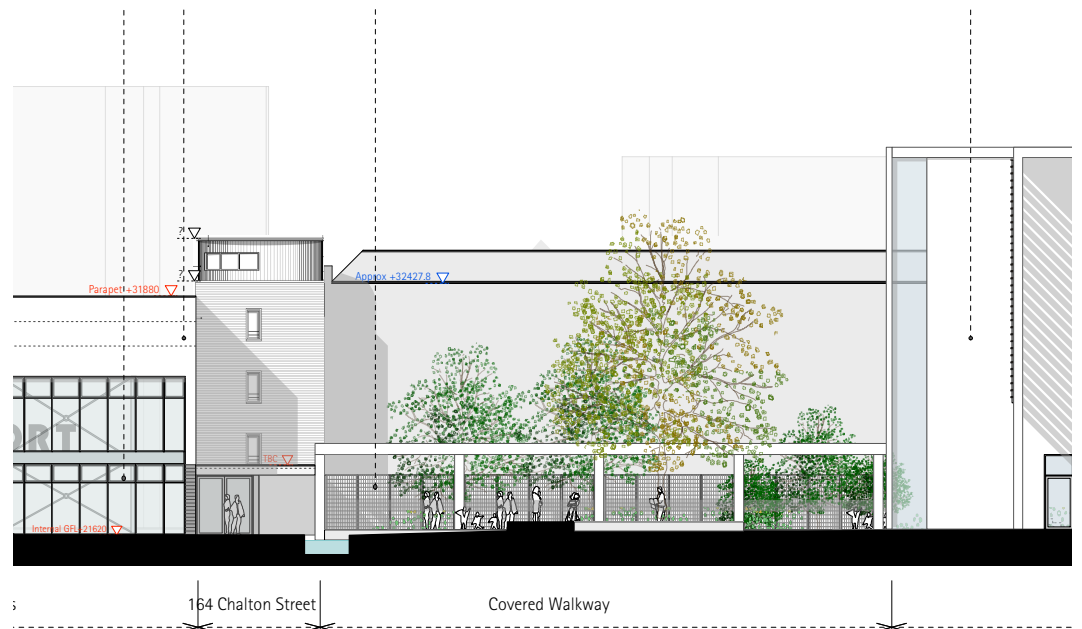


Existing levels of buildings adjacent.
Taken above Chalton Street pavement level.
(Using an extract of Camden's drawing SCCS_ARCH_PL_1256.)

Adjacent gymnasium parapet - 10.2m
Shackleton House parapet - 11m
Shackleton House flat roof - 12.8m
Sussex House roof ridge - 12.6m

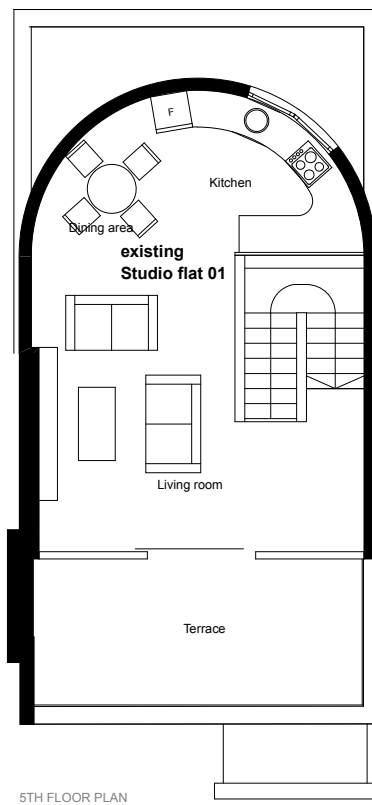
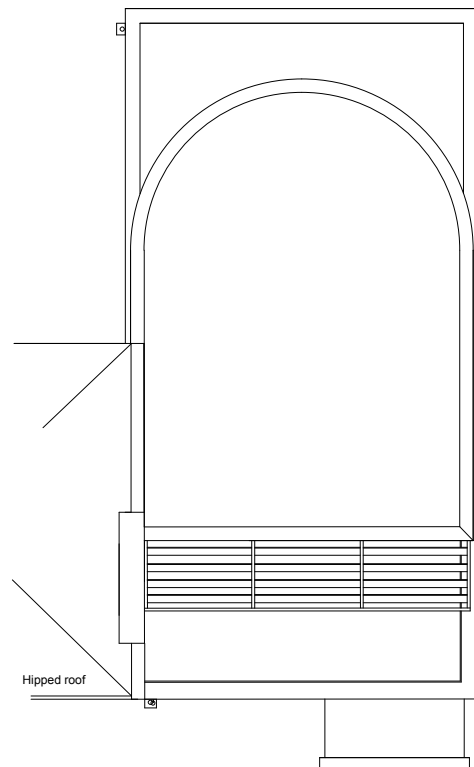
Regents School - 16.650m

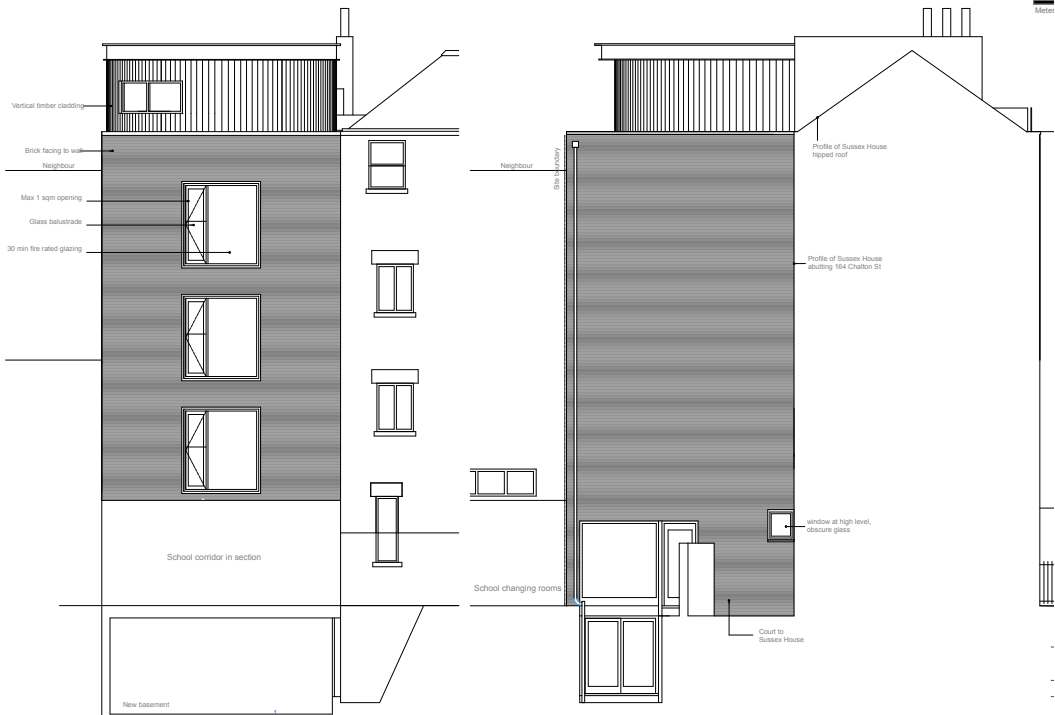
Proposed Shackleton House mansard flat roof - 15.3m



Note the shaded massing blocks in the background of mansion blocks St Christoph House.

Appendix 2 Drawings of the Existing





Appendix 3
Drawings of the Proposed

