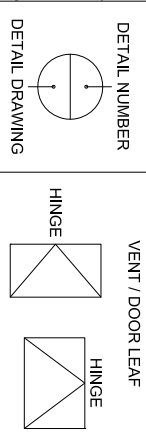


DO NOT SCALE

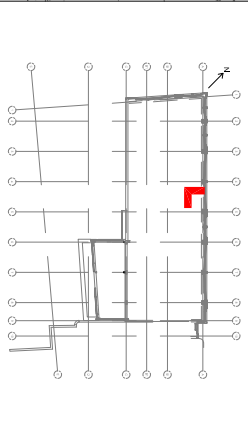
CONTRACTORS ARE RESPONSIBLE FOR SATISFYING THEMSELVES THAT THE DIMENSIONS AND DETAILS SHOWN ON THE DRAWINGS ARE CORRECT AND COMPLIANT WITH THE SPECIFICATION PRIOR TO MANUFACTURE. REPORT OMISSIONS AND ERRORS TO WINTTECH.

CONTRACTORS ARE TO ENSURE THAT ALL COMPONENTS FORMING PART OF THEIR WORKS ARE FABRICATED AND INSTALLED IN ACCORDANCE WITH THE MANUFACTURERS RECOMMENDATIONS.

ALL ELEVATIONS VIEWED FROM THE OUTSIDE UNLESS OTHERWISE STATED



KEY PLAN



ALL DIMENSIONS SUBJECT TO FINAL BUILDING SURVEY FOLLOWING FACADE STRIP OUT

DRAWING BASED ON LATEST INFORMATION AVAILABLE. CONTRACTOR TO ALLOW FOR UPDATES TO DRAWINGS AND RE-SUBMISSION FOR CONSTRUCTION. TO TAKE INTO ACCOUNT OF SURVEY BUILDING INFORMATION AND FINAL DESIGN/ENGINEERING

HEAD RESTRAINT BRACKET - 8mm THICK PRESSED ALUMINIUM BRACKET, 100mm LONG AT 600mm CENTRES. FIXED TO UNDERSIDE OF BEAM WITH 2 No. FISCHER FAZ II 12/10 EXPANDING ANCHORS (GALV), BRACKET FIXED TO FRAME WITH 2 No. Ø5.5x22 HEX HEAD (ST/STEEL) CW OVERSIZED WASHERS THROUGH VERTICAL SLOTS. 1mm THICK PTFE SLIPPER PLATE REQUIRED BETWEEN BRACKET AND FRAME TO ALLOW VERTICAL MOVEMENT.

INSULATED PANEL COMPRISING 2mm THICK MILL FINISH ALUMINIUM OUTER SKIN, 20mm RIGID INSULATION CORE, 2mm THICK MILL FINISH INNER SKIN.

03	SHOP FRONT SYSTEM ADDED	06.09.17	MAV	CA
02	CONSTRUCTION ISSUE	14.07.17	MAV	CA
01	ISSUED FOR INFORMATION	24.05.17	CTG	MAV
No Revision		Date	Initial	CHKD

Project Name: 182 - 184 HIGH HOLBORN, LONDON

Tel: +44(0)20 307 430 Email: enquiries@winttech-group.co.uk

Quartz House, Pendleford Business Park, Wobaston Road, Wolverhampton, WY9 5HA

WINTTECH
 FACADE ENGINEERING CONSULTANCY

Drawing Title: EWS-01 - VERTICAL SECTION THROUGH 1st FLOOR SLAB

Scale: 1:5 @ A3 Date: 17.03.17

Project No.: 02164 Drawing No.: D-120 Rev: 03