

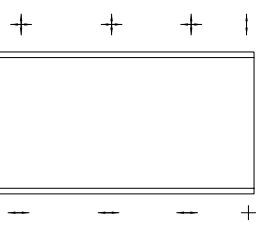
DO NOT SCALE

CONTRACTORS ARE RESPONSIBLE FOR SATISFYING THEMSELVES THAT THE DIMENSIONS AND DETAILS SHOWN ON THE DRAWINGS ARE CORRECT AND COMPLIANT WITH THE SPECIFICATION PRIOR TO MANUFACTURE. REPORT OMISSIONS AND ERRORS TO WINTECH.

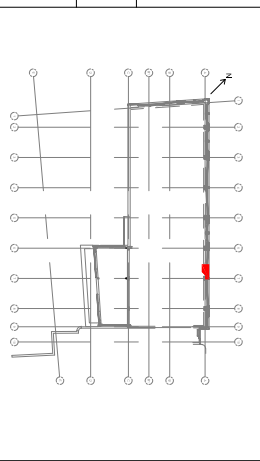
CONTRACTORS ARE TO ENSURE THAT ALL COMPONENTS FORMING PART OF THEIR WORKS ARE FABRICATED AND INSTALLED IN ACCORDANCE WITH THE MANUFACTURERS RECOMMENDATIONS.

ALL ELEVATIONS VIEWED FROM THE OUTSIDE UNLESS OTHERWISE STATED

DETAIL NUMBER	VENT / DOOR LEAF
DETAIL DRAWING	HINGE HINGE



PANEL FIXING PRINCIPAL



ALL DIMENSIONS SUBJECT TO FINAL BUILDING SURVEY FOLLOWING FACADE STRIP OUT

DRAWING BASED ON LATEST INFORMATION AVAILABLE. CONTRACTOR TO ALLOW FOR UPDATES TO DRAWINGS AND RE-SUBMISSION FOR CONSTRUCTION TO TAKE INTO ACCOUNT OF SURVEY BUILDING INFORMATION AND FINAL DESIGN/ENGINEERING

6mm THICK PRESSED ALUMINIUM RESTRAINT BRACKETS. BRACKET FIXED TO STUD WITH 2 No. 05.5x38 HEX HEAD SELF DRILL SCREWS. BRACKET FIXED TO FRAMING WITH No. 10x38 C&K HEAD SELF TAPPING SCREWS (S/STEEL). BRACKETS TIED TOGETHER WITH 10x38 HEX HEAD BOLT 20mm FINGER TIGHT NYLON NUT AND WASHERS THROUGH 40mm VERTICAL SLOT. 1mm THICK PTFE SLIPPER PLATE REQUIRED BETWEEN BRACKETS. BRACKETS 100mm LONG AT MAX. 600mm CENTRES.

100mm DEEP STEEL SFS STUDS AT MAX. 600mm CENTRES FILLED WITH 100mm MINERAL WOOL INSULATION
INTERNAL FINISHES TO ARCHITECTS DETAILS

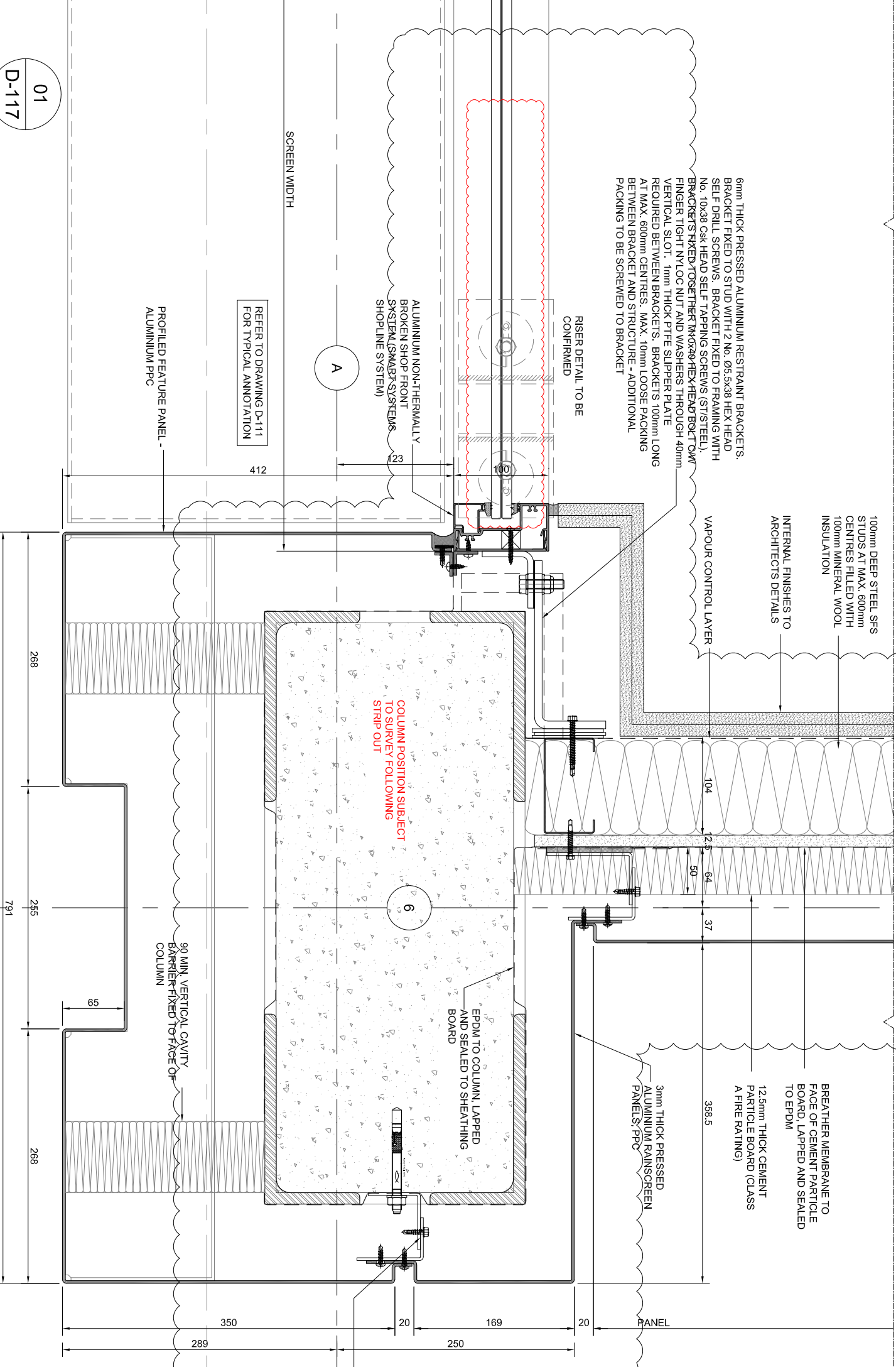
6mm THICK PRESSED ALUMINIUM RESTRAINT BRACKETS. BRACKET FIXED TO STUD WITH 2 No. 05.5x38 HEX HEAD SELF DRILL SCREWS. BRACKET FIXED TO FRAMING WITH No. 10x38 C&K HEAD SELF TAPPING SCREWS (S/STEEL). BRACKETS TIED TOGETHER WITH 10x38 HEX HEAD BOLT 20mm FINGER TIGHT NYLON NUT AND WASHERS THROUGH 40mm VERTICAL SLOT. 1mm THICK PTFE SLIPPER PLATE REQUIRED BETWEEN BRACKETS. BRACKETS 100mm LONG AT MAX. 600mm CENTRES. MAX. 10mm LOOSE PACKING BETWEEN BRACKET AND STRUCTURE - ADDITIONAL PACKING TO BE SREWED TO BRACKET

ALUMINIUM NON-THERMALLY BROKEN SHOP FRONT SYSTEM (SMART SYSTEMS SHOPLINE SYSTEM)

REFER TO DRAWING D-111 FOR TYPICAL ANNOTATION

PROFILED FEATURE PANEL - ALUMINIUM PPC

3mm ALUMINIUM SUPPORT RAILS FIXED TO COLUMN WITH FISCHER FAZ II 10/10 EXPANDING ANCHORS. 100mm LONG AT 500mm CENTRES - FIXING TO BE CONFIRMED BY PULL OUT TESTS.



SCREEN WIDTH

A

412

COLUMN POSITION SUBJECT TO SURVEY FOLLOWING STRIP OUT

6

EPDM TO COLUMN LAPPED AND SEALED TO SHEATHING BOARD

3mm THICK PRESSED ALUMINIUM RAINSCREEN PANELS - PPC

BREATHER MEMBRANE TO FACE OF CEMENT PARTICLE BOARD, LAPPED AND SEALED TO EPDM
12.5mm THICK CEMENT PARTICLE BOARD (CLASS A FIRE RATING)

90 MIN. VERTICAL CAVITY BARRIER-FIXED TO FACE OF COLUMN

350

289

250

169

20

20

PANEL

368.5

50

64

2.5

104

37

255

268

268

791

01
D-117

03 SHOP FRONT SYSTEM ADDED	07.09.17	MAV	CA
02 CONSTRUCTION ISSUE	14.07.17	MAV	CA
01 ISSUED FOR INFORMATION	25.05.17	MAV	CA
No. Revision	Date	Initial	Chkd

WINTTECH
 FACADE ENGINEERING CONSULTANCY
 Quartz House, Pendeford Business Park,
 Wobson Road, Wotton Bassett, WY9 5TA
 Tel: +44(0)1902 307430 Email: enquiries@winttech-group.co.uk
 Project Name: 182 - 184 HIGH HOLBORN, LONDON

Drawing Title: EWS-01: GROUND FLOOR JAMB DETAIL TO RECESS
 Status: CONSTRUCTION
 Scale: 1:5 @ A3
 Project No.: 02164
 Drawing No.: D-117
 Date: 25.03.17
 Rev: 03