

Origin Arch.	Rev.	Cad Ref	
Origin Struc.	Rev.	Drawn by	SAJ

Copyright : C.E.S.

Standard Notes

1. DO NOT SCALE THIS DRAWING. WORK TO DIMENSIONS GIVEN.
2. ALL DIMENSIONS TO BE VERIFIED FROM SITE MEASUREMENT.
3. DIMENSIONS ARE IN MILLIMETRES UNLESS OTHERWISE STATED.

NOTES:

Rev.	Date	Description	By	Chkd
------	------	-------------	----	------

CES
LIGHTING & ELECTRICAL
SPECIALISTS

Crusader Hall, 25c Stanley Park Rd, Wallington, Surrey SM6 0HL
Office: 02 8835 2816
Email: ryan@ces-engineers.co.uk
Website: www.church-lighting.co.uk www.church-electrics.co.uk

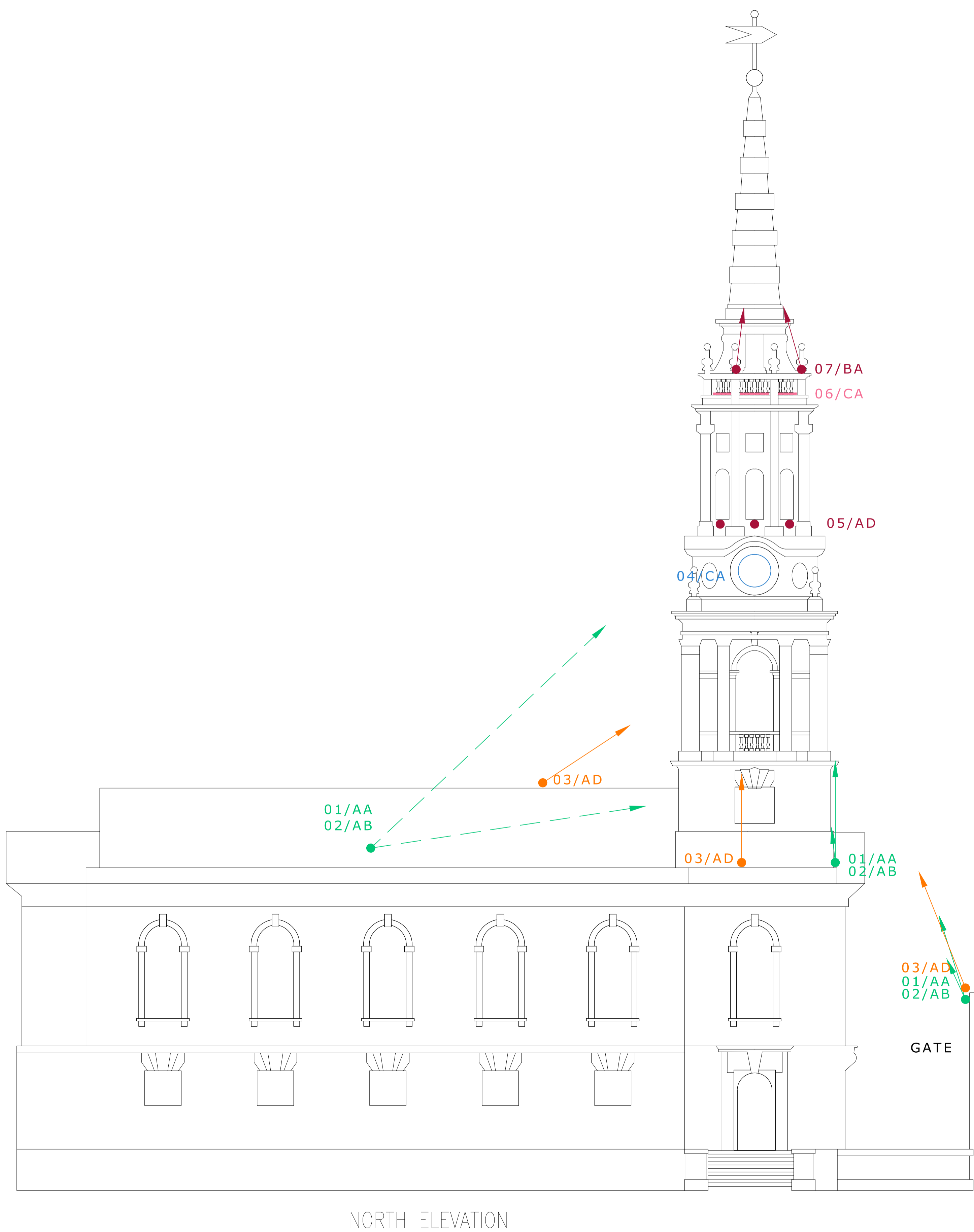
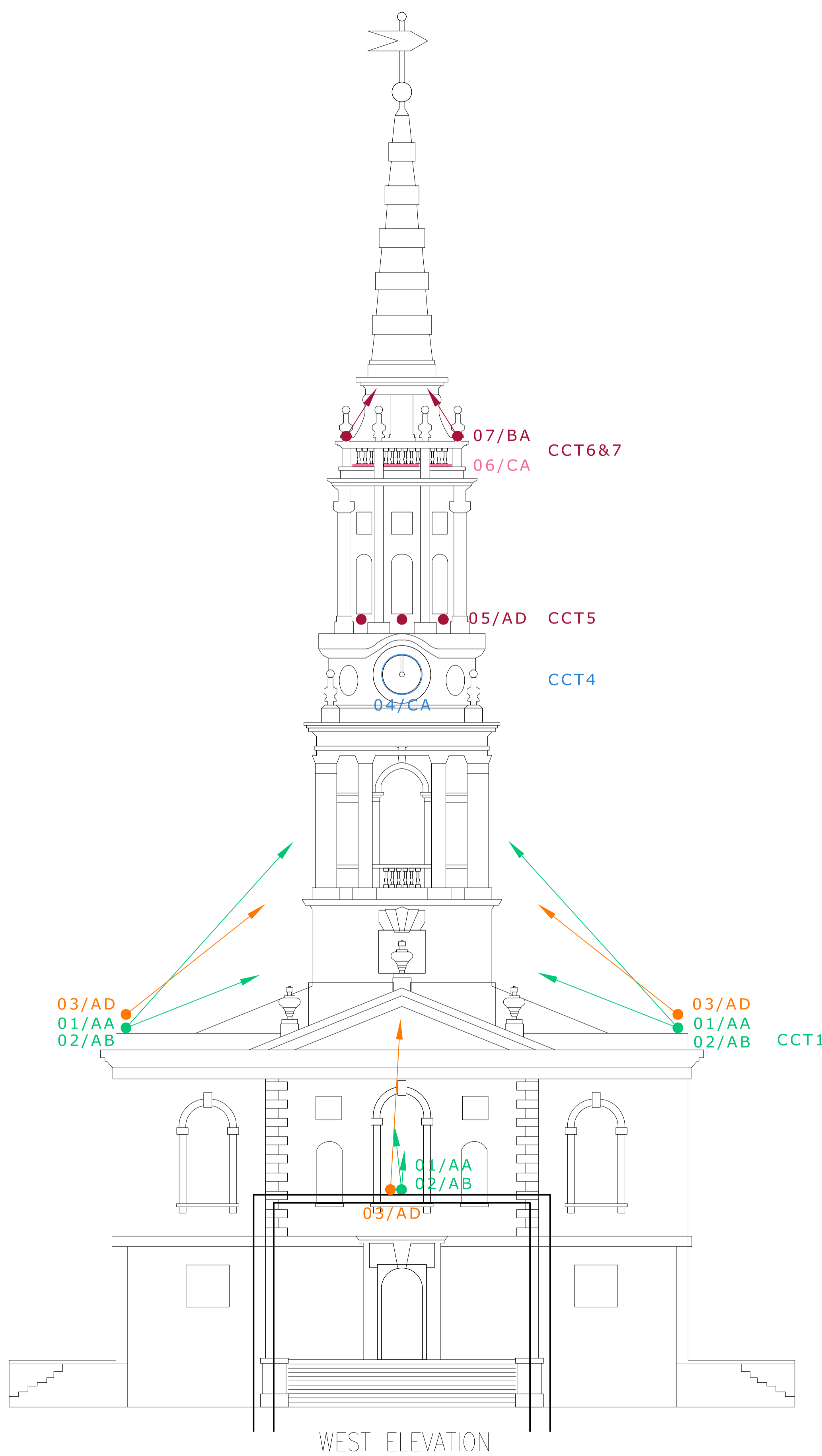
Client
St Giles in the fields

Project
St Giles in the fields

Drawing Title
ELEVATIONS

Dwg No. **6190-02** Revision -

Scale	Date	Engineer	Checked
NTS@A1	JAN'17	DB	DB



GATE

Origin Arch.		Rev.	Cad Ref	
Origin Struct.		Rev.	Drawn by	SAJ

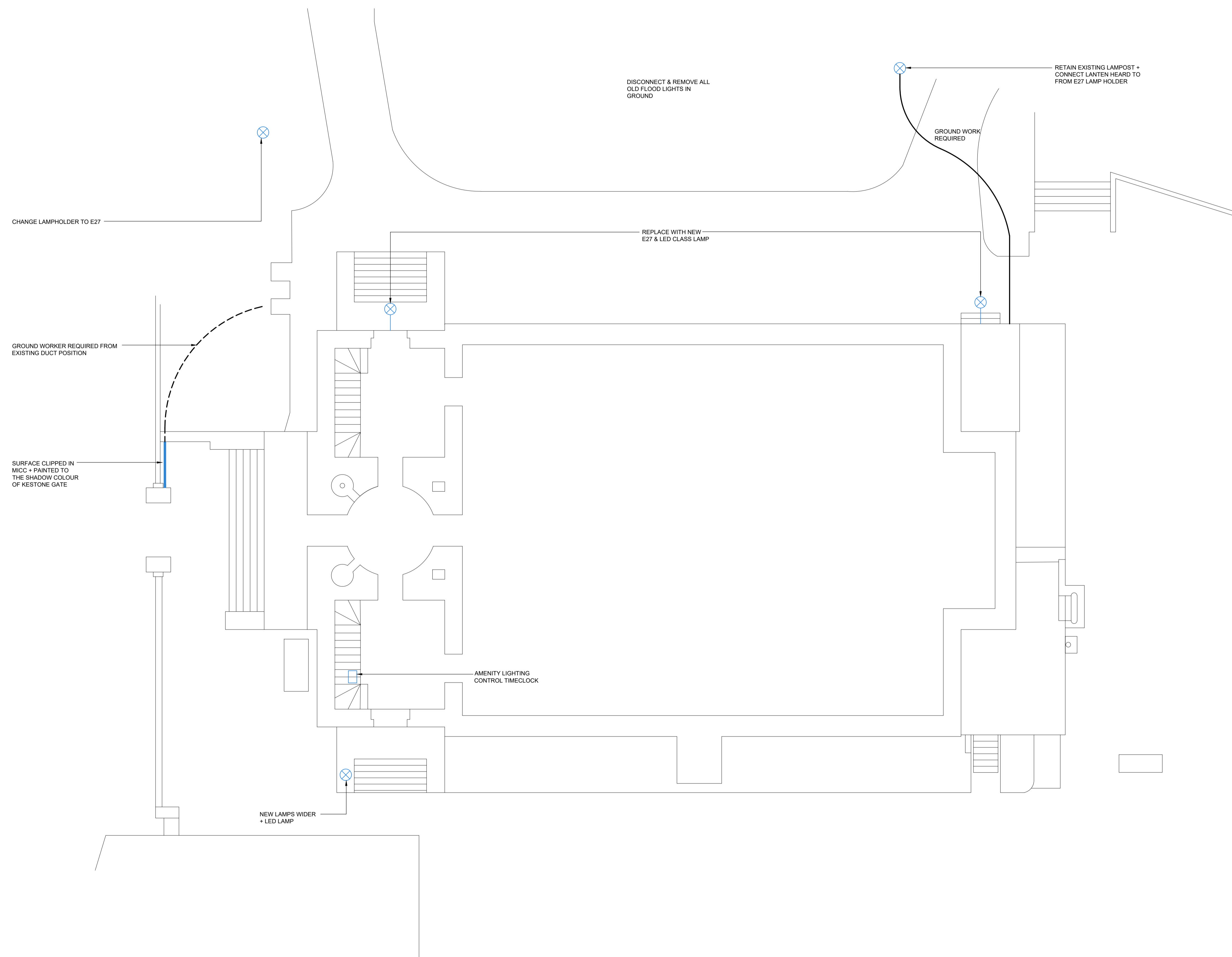
Copyright : C.E.S.

Standard Notes

1. DO NOT SCALE THIS DRAWING. WORK TO DIMENSIONS GIVEN.
2. ALL DIMENSIONS TO BE VERIFIED FROM SITE MEASUREMENT.
3. DIMENSIONS ARE IN MILLIMETRES UNLESS OTHERWISE STATED.

NOTES:

ALL LAMP POSTS AND LANTERNS TO BE REFURBISHED AND E27 LAMP HOLDERS TO BE INSTALLED READY FOR MODERN LED LAMPS



Rev.	Date	Description	By	Chkd
------	------	-------------	----	------

CES
LIGHTING & ELECTRICAL
SPECIALISTS

Crusader Hall, 25c Stanley Park Rd, Wallington, Surrey SM6 0HL
Office: 02 8835 2816
Email: ryan@ces-engineers.co.uk
Website: www.church-lighting.co.uk www.church-electrics.co.uk

Client
St Giles in the fields

Project
St Giles in the fields

Drawing Title
PROPOSED LANTENS & LAMP POSTS

Dwg No. **6190-03** Revision -

Scale	Date	Engineer	Checked
NTS@A1	JAN'17	DB	DB

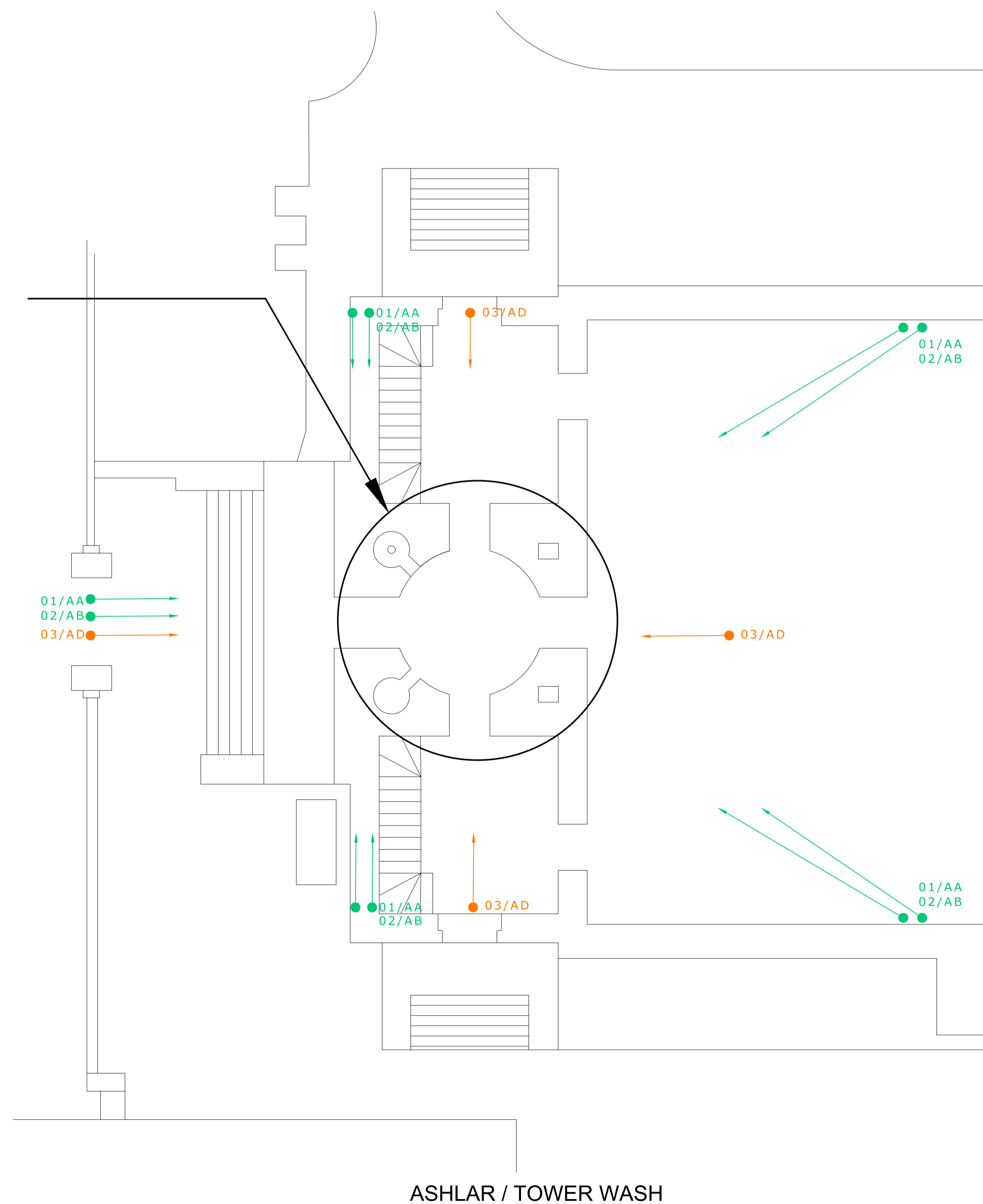
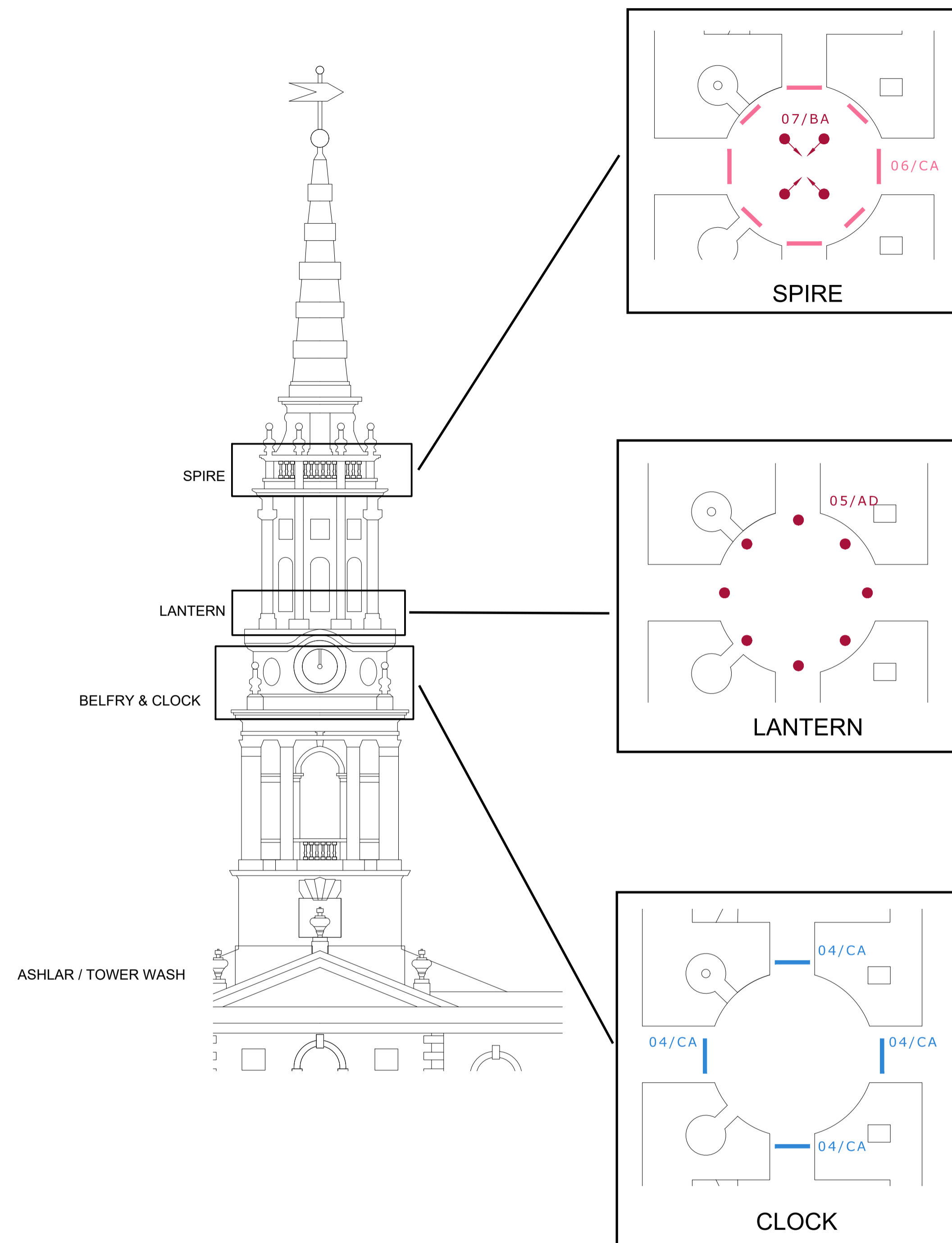
Origin Arch.	Rev.	Cad Ref	
Origin Struc.	Rev.	Drawn by	SAJ

Copyright : C.E.S.

Standard Notes

- DO NOT SCALE THIS DRAWING. WORK TO DIMENSIONS GIVEN.
- ALL DIMENSIONS TO BE VERIFIED FROM SITE MEASUREMENT.
- DIMENSIONS ARE IN MILLIMETRES UNLESS OTHERWISE STATED.

NOTES:



Rev.	Date	Description	By	Chkd
------	------	-------------	----	------

CES
LIGHTING & ELECTRICAL
SPECIALISTS

Crusader Hall, 25c Stanley Park Rd, Wallington, Surrey SM6 0HL
Office: 02 8835 2816
Email: ryan@ces-engineers.co.uk
Website: www.church-lighting.co.uk www.church-electrics.co.uk

Client:
St Giles in the fields

Project:
St Giles in the fields

Drawing Title:
PLAN TOWER LIGHTING

Dwg No. **6190-04** Revision -

Scale	Date	Engineer	Checked
NTS@A1	JAN'17	DB	DB