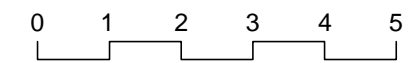
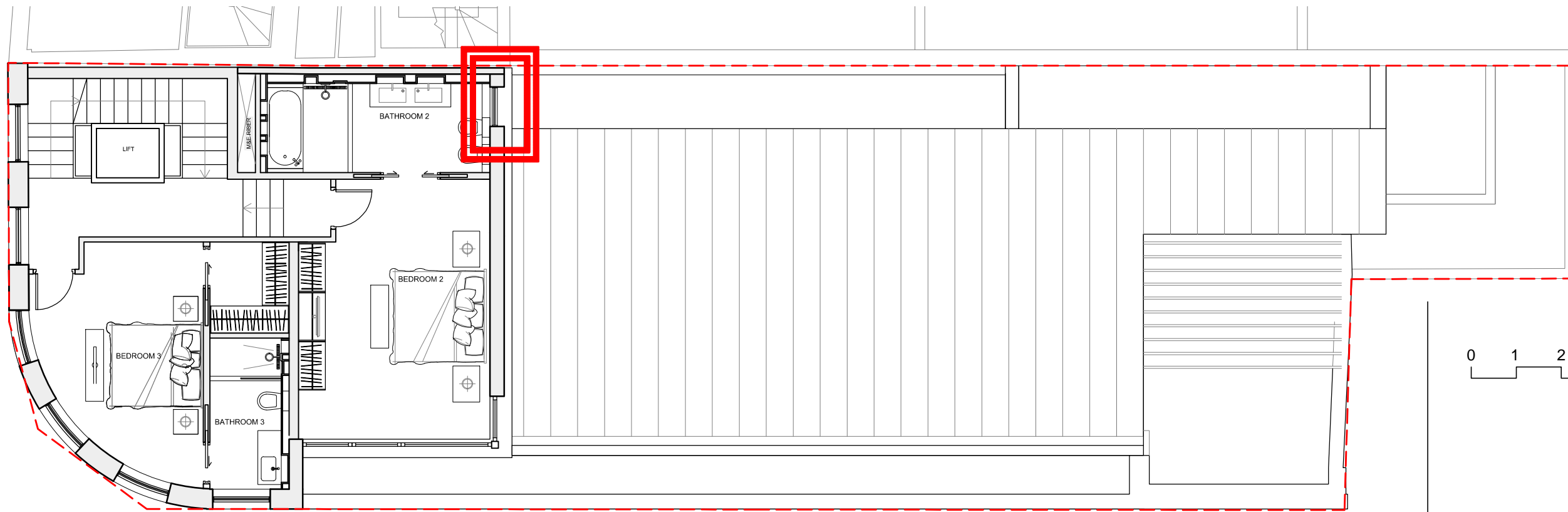


Contractors must verify all dimensions on site before any works are commenced.
 This drawing remains the property of EZRA ATTIA DEVELOPMENTS LIMITED and may not be reproduced in any way without prior consent.
 Toutes dimensions doivent être vérifiées par l'entrepreneur sur les lieux avant de commencer les travaux.
 Ce dessin appartient uniquement à la compagnie EZRA ATTIA DEVELOPMENTS LIMITED dont la reproduction en est interdite sans autorisation.



1 SECOND FLOOR PLAN
 SCALE 1:100 @ A3

F	DISCHARGE OF PLANNING CONDITION 8	04-08-2017
E	MINOR MATERIAL AMENDMENTS APPLICATION DURING CONSTRUCTION	13-04-2016
D	MINOR MATERIAL AMENDMENTS APPLICATION DURING CONSTRUCTION	00-00-2014
C	NEW MINOR MATERIAL AMENDMENTS APPLICATION	21-10-2013
B	MINOR MATERIAL AMENDMENTS PLANNER REVISION	15-05-2013
A	MINOR MATERIAL AMENDMENTS APPLICATION	09-04-2013

REVISIONS/NOTES
 -

EAD Ltd
 3 Belsize Place
 London NW3 5AL
 Tel: 44(0)20 7431 2627
 Fax: 44(0)20 7794 0198
 email: studio@eadl.co.uk
 www.eadl.co.uk



Client
GCM

Project
3 BELSIZE PLACE

Area
SECOND FLOOR

Description
PROPOSAL

Scale	Drawn	Approved	Date	Project Number
1:100@A3	EC	-	06.13	-
Drawing Number	GA-00-03		Revision	A B C D E
			F	- - - - -

CAD File No. -
 X-REF File Name -

BOTTOM HUNG FROSTED GLASS WINDOW TO SECOND FLOOR BATHROOM. **CLOSE POSITION.**



BOTTOM HUNG FROSTED GLASS WINDOW TO SECOND FLOOR BATHROOM. **OPEN POSITION.**

