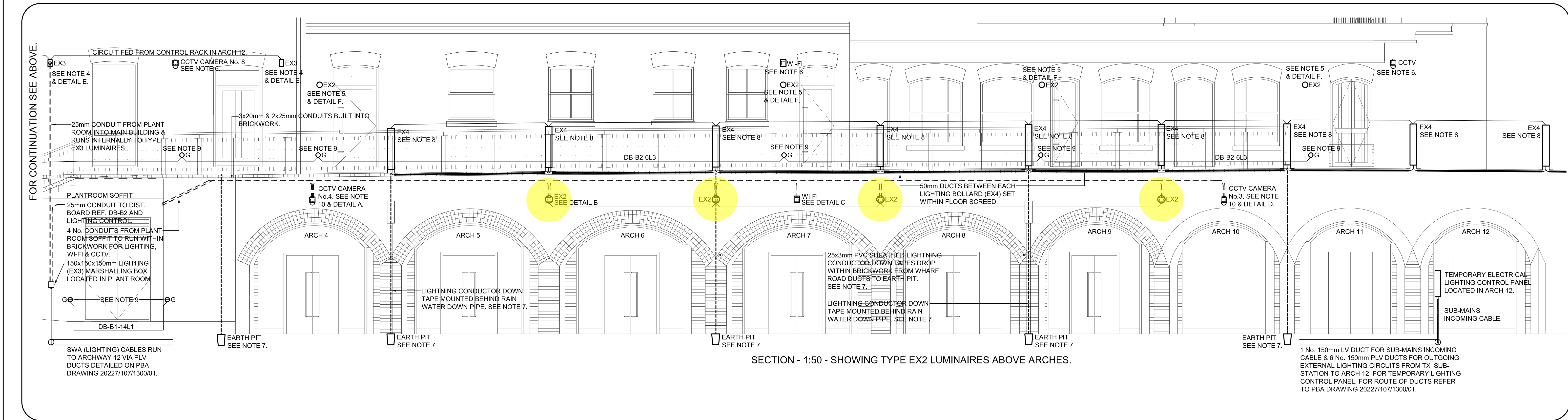
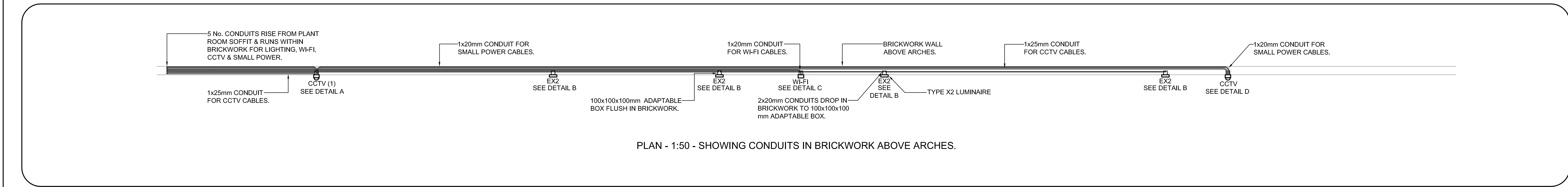


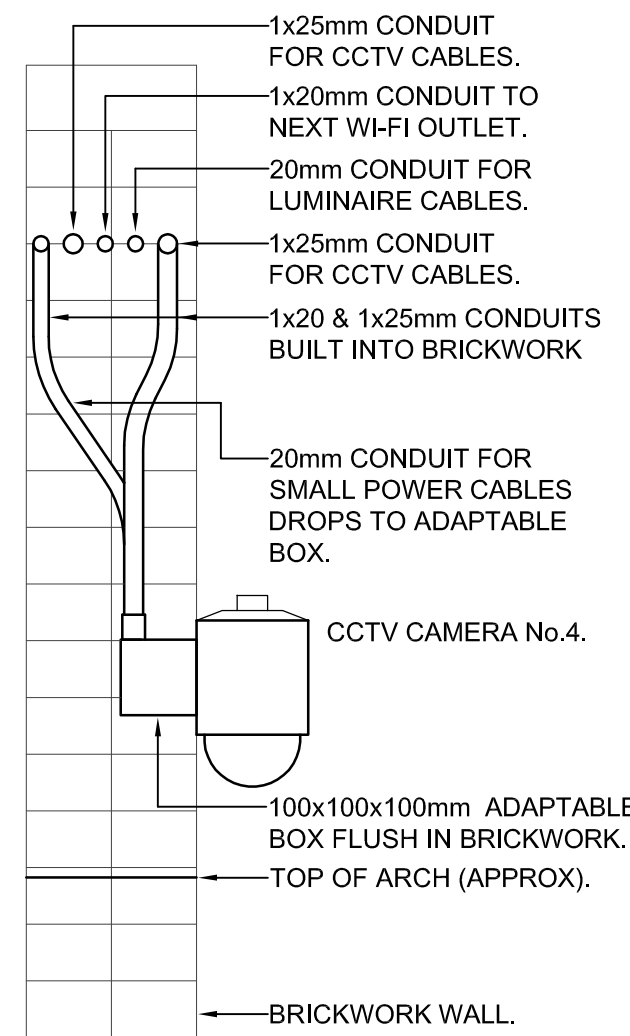
SECTION - 1:50 - SHOWING LUMINAIRES, CCTV & WI-FI IN BLOCKS 1, 2 & 3.



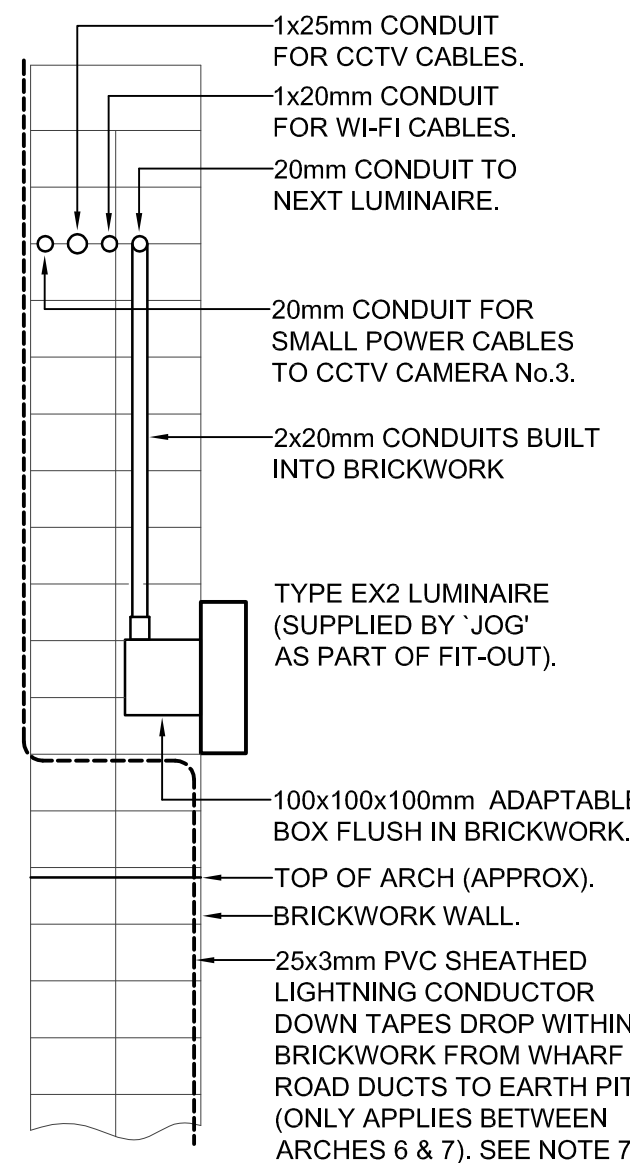
SECTION - 1:50 - SHOWING TYPE EX2 LUMINAIRES ABOVE ARCHES.



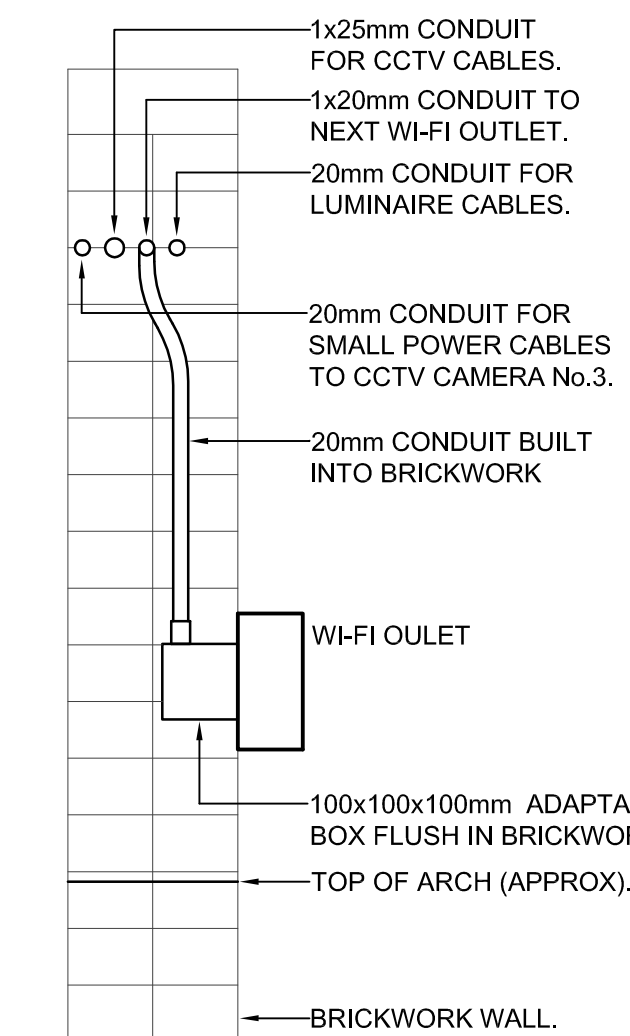
PLAN - 1:50 - SHOWING CONDUITS IN BRICKWORK ABOVE ARCHES.



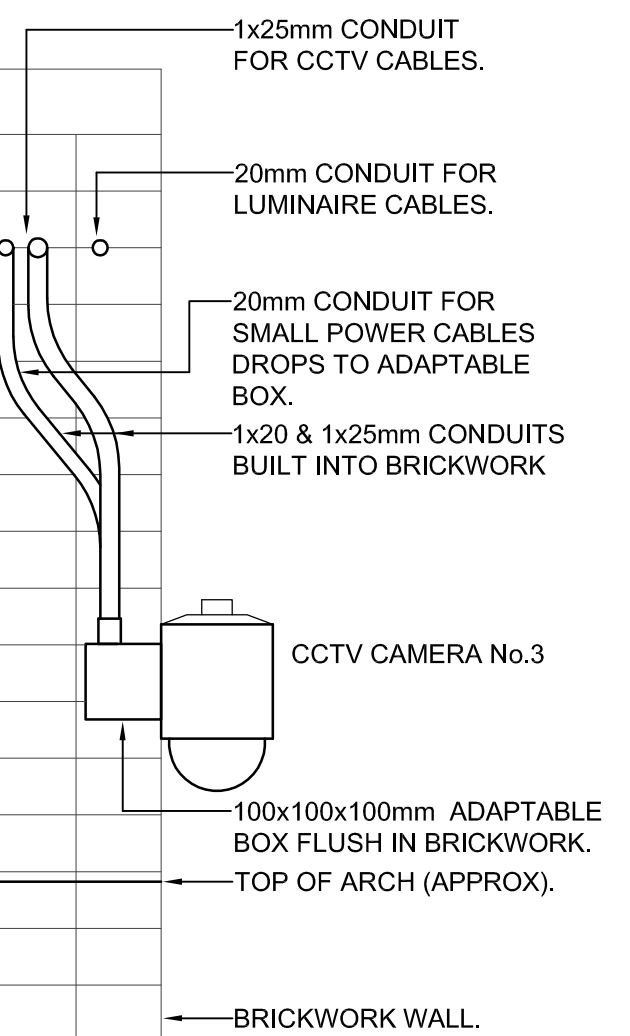
DETAIL A - SCALE 1:10.
CONTAINMENT FOR CCTV
CAMERA No. 4 OVER ARCH.



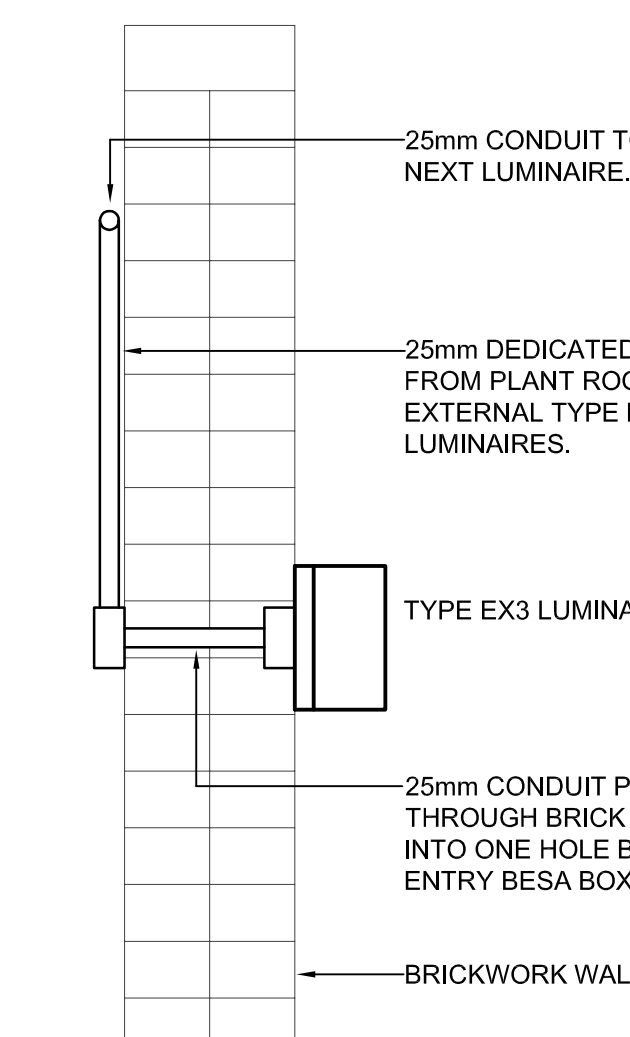
DETAIL B - SCALE 1:10.
CONTAINMENT FOR TYPE
EX2 LUMINAIRE OVER ARCH.



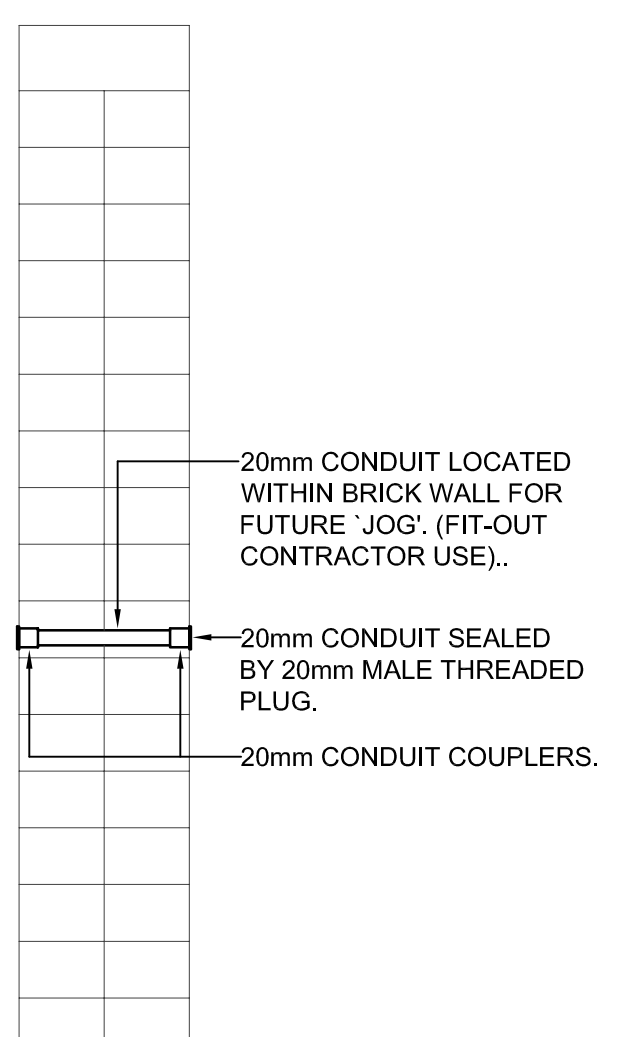
DETAIL C - SCALE 1:10.
CONTAINMENT FOR WI-FI
OUTLET OVER ARCH.



DETAIL D - SCALE 1:10.
CONTAINMENT FOR CCTV
CAMERA No.3 OVER ARCH.



DETAIL E - SCALE 1:10.
CONTAINMENT FOR TYPE
EX3 LUMINAIRE.



DETAIL F - SCALE 1:10.
CONTAINMENT FOR FUTURE
TYPE EX2 LUMINAIRE.

DO NOT SCALE FROM THIS DRAWING		Notes		1. THIS DRAWING IS TO BE READ IN CONJUNCTION WITH ARCHITECT'S & STRUCTURAL ENGINEERS DRAWINGS, THE PROJECT SCHEDULES & SPECIFICATIONS.		2. FOR SYMBOLS LEGEND & ABBREVIATIONS REFER TO DRAWING 4431/BAMSE/7500.		3. FOR FULL DETAILS OF EXTERNAL LUMINAIRES REFER TO THE LUMINAIRE SCHEDULE.		4. FOR TYPE EX3 LUMINAIRES A SEPARATE DEDICATED 25mm CONDUIT RUNS INTERNALLY BETWEEN LUMINAIRES & PLANT ROOM. CONDUIT TERMINATES WITHIN 150x150x150mm LIGHTING MARSHALLING BOX.		5. FOR TYPE EX2 LUMINAIRES A 20mm CONDUIT PASSES THROUGH THE WALL FOR FUTURE USE BY JCG FIT-OUT CONTRACTOR. CONDUIT PLUGGED AND SEALED BOTH ENDS BY MEANS OF 20mm BRASS CONDUIT PLUG.		6. WI-FI & CCTV AS DETAILED ON BLOCKS 1, 2, & 3 ARE FOR IDENTIFICATION PURPOSES ONLY. 1x25mm CONDUIT PASSES THROUGH BRICKWORK FROM EXTERNAL TO INTERNAL BUILDING FOR CCTV POWER CABLEING. DEDICATED CONTAINMENT RUNS INTERNALLY OF BUILDING BETWEEN CCTV LOCATION & CCTV RACK LOCATED AT CANAL LEVEL.		7. FOR DETAILS OF LIGHTNING PROTECTION SYSTEM REFER TO PTSG DRAWINGS LP-01, LP-02 & LP-03.		8. FOR PLAN VIEW & CONTAINMENT DETAIL B OF BOLLARD LIGHTING (EX4) REFER TO DRAWING 4431/BAMSE/4608.		9. TYPE G LUMINAIRES REQUIRE BACK BOX BUILT INTO BRICKWORK TO HOUSE DRIVER UNIT.		10. FOR SMALL POWER OUTLET/POWER SUPPLIES TO CCTV No's 3 & 4 REFER TO BAMSE SMALL POWER DRAWING 4431/BAMSE/7700/REV C1.		11. THIS TYPE G LUMINAIRE TO BE LOCATED SUCH AS TO ILLUMINATE BLOCK 2 SIDE DOOR.		Computer sheet name 4431-BAMSE/7700/REV C1 - Kings Cross-Hin & Coal Buildings External Lighting Plans & Sections		Environmental Services Civil Planning Feasibility Studies 3D Visualisation bam Services Engineering Centrum Business Park Griffins Way, St Albans Herts AL1 2JE Tel: (01727) 894200 www.bam.co.uk		project FISH & COAL KINGS CROSS CENTRAL LONDON		drawing status RECORD		contract no. HLN : 0217		scale 1:100 @ A0		client ref. date May '16		drawn by kc		checked by		drawing no 4431		BAMSE		7604		AB1	
--------------------------------	--	-------	--	--	--	---	--	---	--	---	--	---	--	---	--	--	--	---	--	--	--	---	--	--	--	---	--	---	--	---	--	--------------------------	--	----------------------------	--	---------------------	--	--------------------------------	--	----------------	--	------------	--	--------------------	--	-------	--	------	--	-----	--