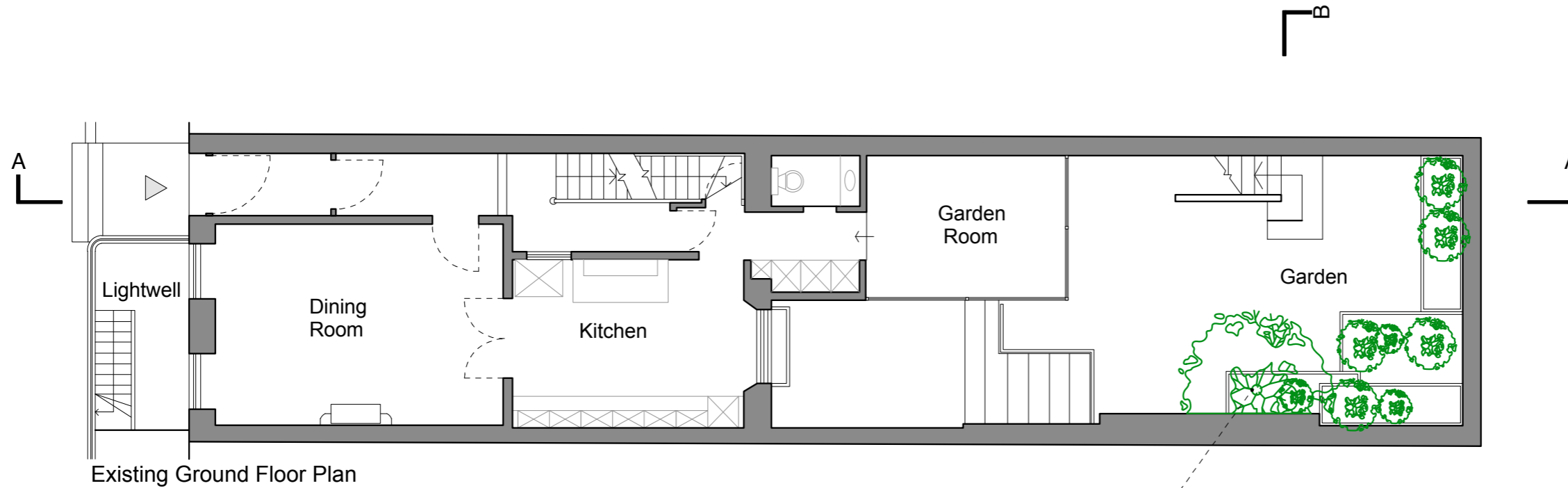


**General Notes**  
 Do not scale from this drawing  
 All dimensions to be verified on site  
 To be read in conjunction with all relevant documents  
 In the event of discrepancy notify the Architect immediately  
 This document is copyright of Hugh Cullum Architects Ltd

**Issue Status**  
 SK Sketch                    E Existing Condition  
 D Design                    P Permissions  
 T Tender                    C Contract



1x eucalyptus fell to ground level

(A): Issued for Tree removal (12.09.2017/MS/HC)  
 (L): Issued for Listed Building Consent (30.01.2017/MS/HC)  
 Revision: Information (date/drawn by/checked by)

**HUGH CULLUM 24 John Street, WC1**  
 ARCHITECTS LTD  
 Bloomsbury Design Existing Condition  
 61b Judd Street Ground Floor Plan  
 London WC1H 9QT 1:50@A1, 1:100@A3 March 2017  
 t 020 7383 7647  
 f 020 7387 7645  
 mail@hughcullum.com JS024-E011(L)

