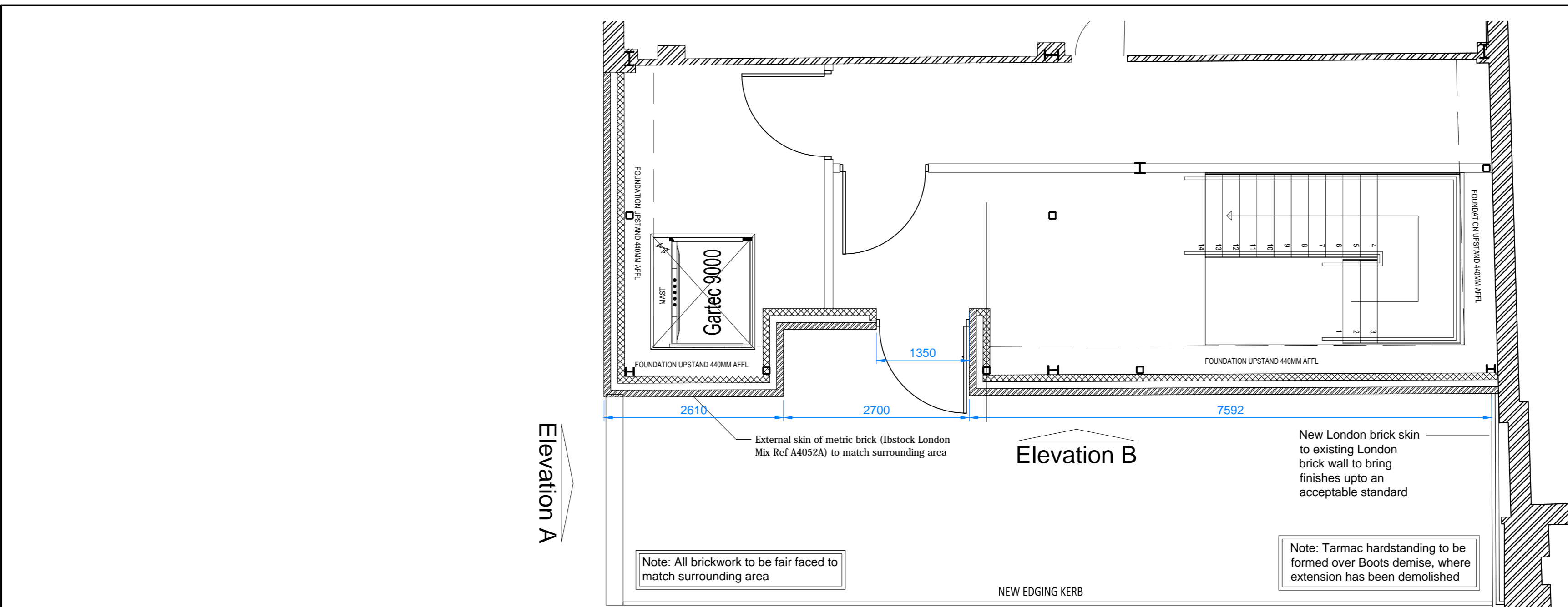


T:\S777 Kilburn\Working Drawings\S777 Kilburn CONSTRUCTION Working Drawings For Final Build.dwg



NOTES
Do not scale this drawing

Rev B	Revised to suit planners needs, removal of sections and detail notes.
Date 13.09.17	Return wall revised to London brick skin over existing.
Rev A	Revised elevations to take into account designed foundations and steel frame.
Date 14.07.17	LW cladding introduced to M&S return wall-

Rev B	Revised to suit planners needs, removal of sections and detail notes.
Date 13.09.17	Return wall revised to London brick skin over existing.
Rev A	Revised elevations to take into account designed foundations and steel frame.
Date 14.07.17	LW cladding introduced to M&S return wall-

CONSTRUCTION



NOTTINGHAM NG90 1BS 0115 950 6111

County CONTRACTORS

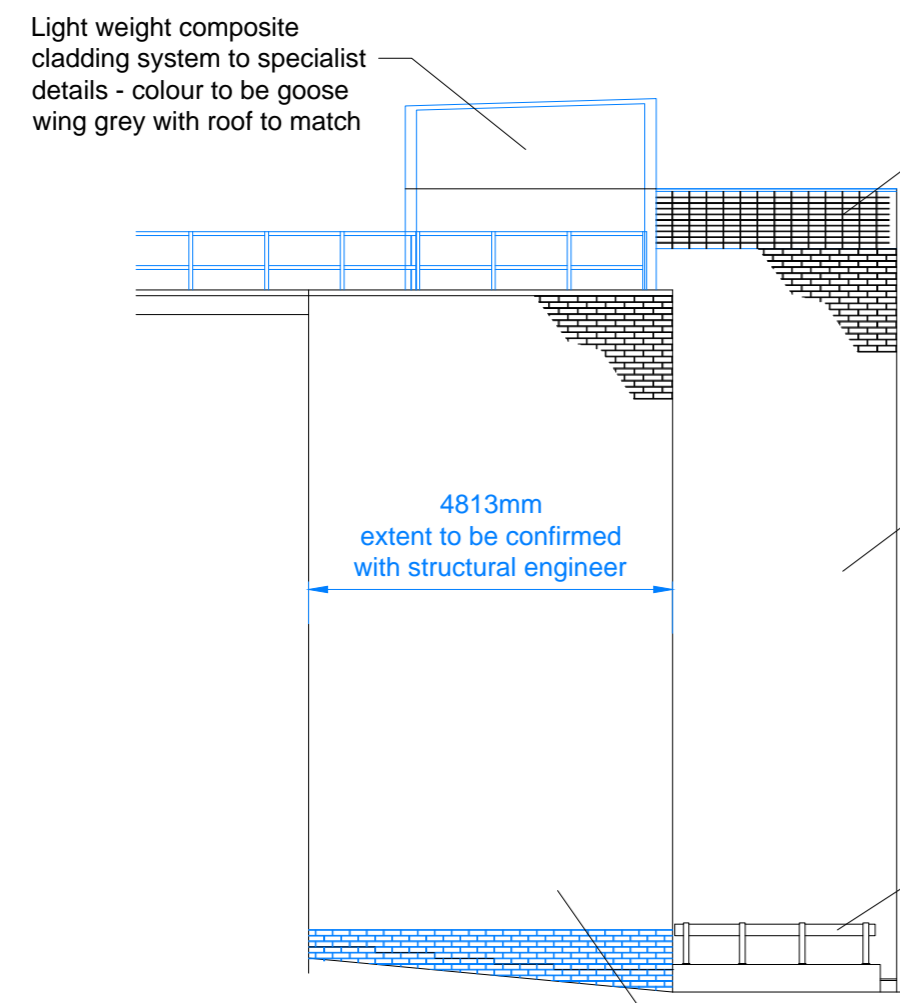
105/107 High Street
Worle
Weston-super-Mare
BS22 6HA
T. 01934 523 000
Contractor's Ref

Project Name
**Store 777
Kilburn
London NW9 4HJ**

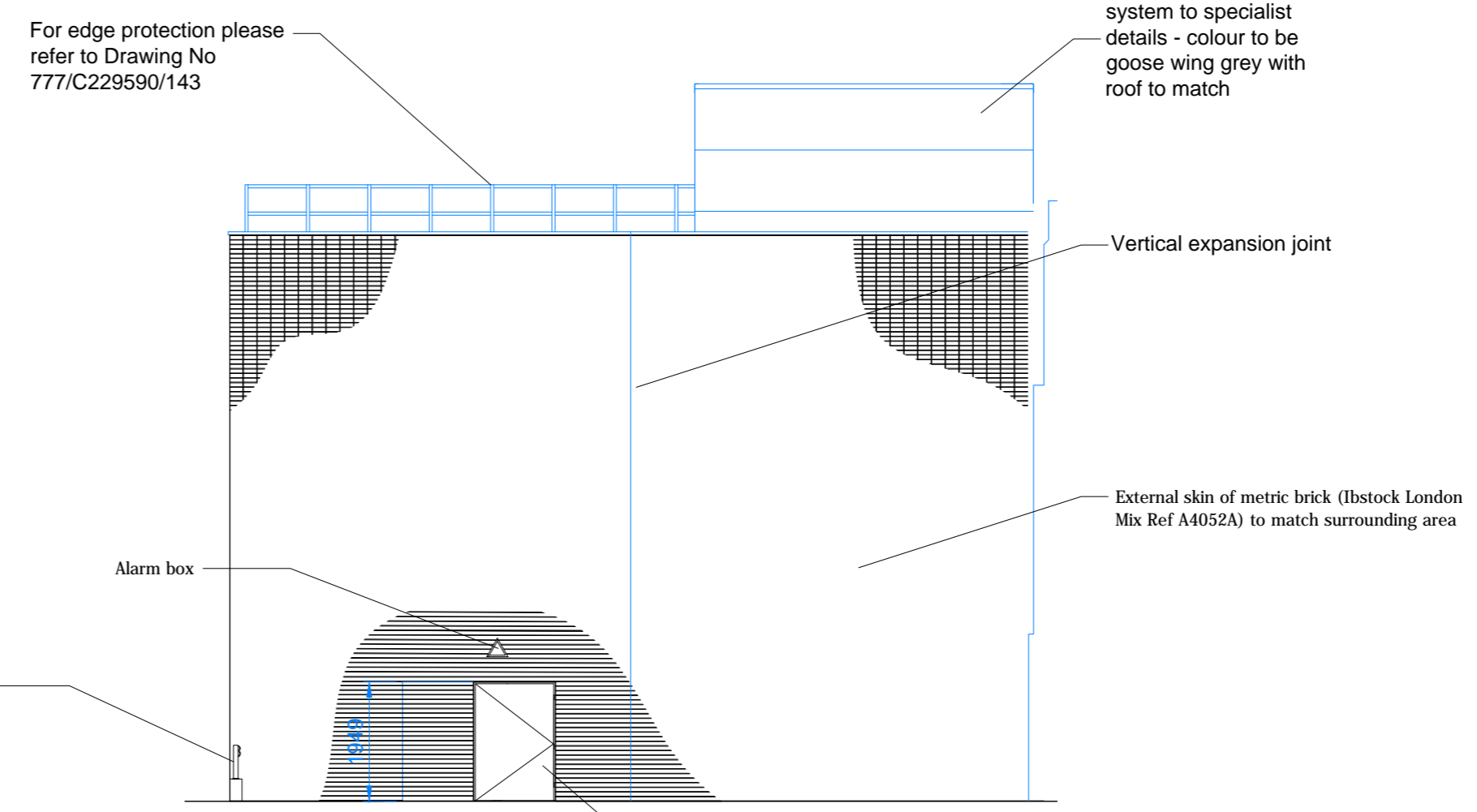
Drawing Title
**Proposed rear elevation works
Planning use only**

Dept. **Design**
Drawn **A.Parish** Approved
Scale **####** Date **07.04.15**

Drg No. **777 / C229590 / 141** Rev. **B**



Proposed Elevation A
Scale 1:100



Proposed Elevation B
Scale 1:100

