

Hall School – Proposed Plant Selection

East Facing Living Wall

Mixed Matrix– all shade tolerant to deal with aspect and tree canopy shade, swathes of flowering geraniums inter-mixed with hardy evergreen species



Pachysandra terminalis



Sarcococca confusa



Dryopteris affinis



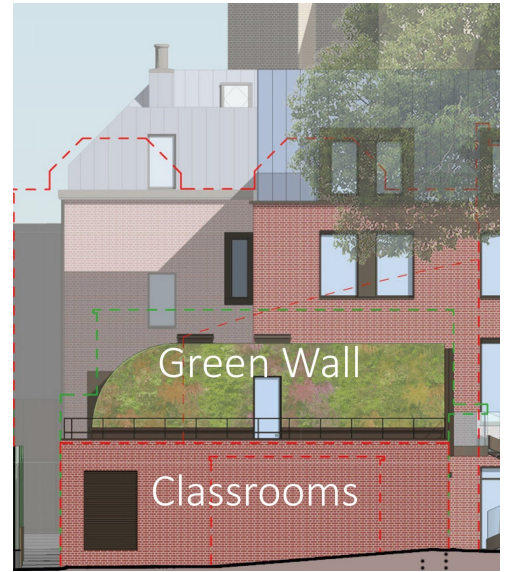
Asplenium scolopodrium



Hedera helix



Geranium macrorrhizum



South Facing Living Wall

4 Planting Groups – group 1 below (Wild flower meadow turf) to continue onto green roof for seamless transition from living wall to green roof. Majority of species have high BREEAM rating Green roof itself to contain varying sedum and turf bands to keep the distinctive bands.



Group 1-
Green Mix
Wild Turf Mix



Species mix x 20

Including-

Malva moschata

Gallium verum

Vicia sativa

Stachys officinalis

Geranium pratense

Primula veris

Group 2-
Yellow Flowering Mix

Euonymus 'Emerald and Gold'



Tagetes patula



Lysimachia nummularia



Santolina chaemaecyparisis



Group 3-
Blue/White Flowering Mix

Erigeron glaucus



Lavendula angustifolia



Carex flacca



Nepeta cataria

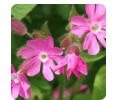


Group 4-
Red/Pink flowering mix

Scabiosa columbaria



Silene dioica



Hedera helix



Geranium macrorrhizum



Heuchera 'Purple palace'

