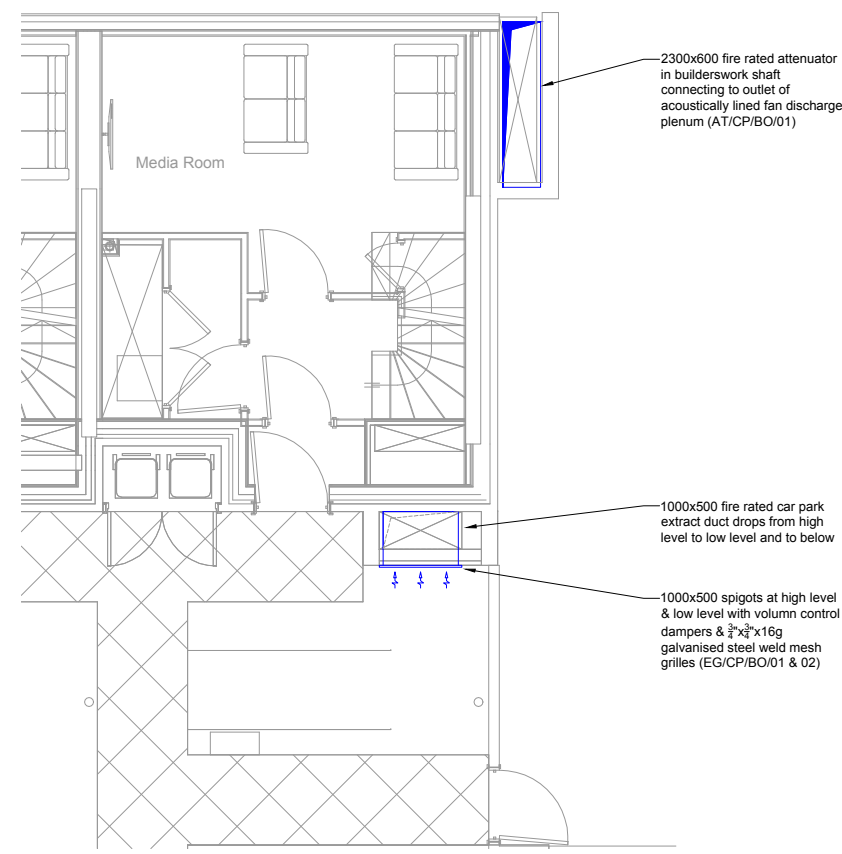
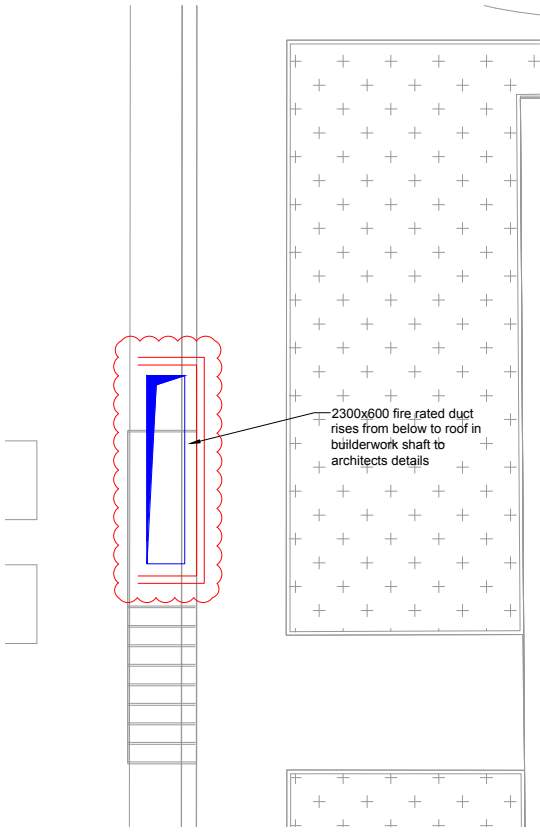


Car Park Extract Plentroom
Scale 1:20

Section 'A-A'
Scale 1:50

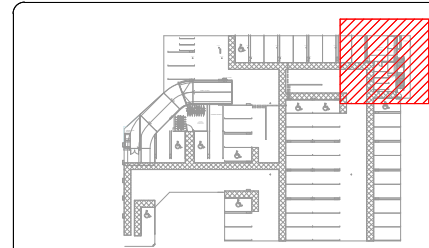


Level BO Car Park

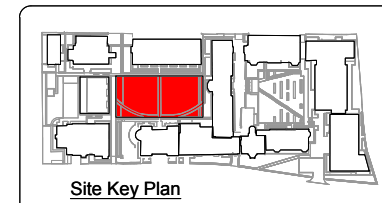


Level GF Car Park

Drawing based on A & Q drawing no.
9000-DRG-03ZZ-AL009 - Rev P2



Key Plan



Site Key Plan

Copyright - This drawing and the designs it represents are the property of MKP Consultants Ltd and shall not be copied, circulated or issued other than as necessary to fulfil contractual requirements of the project.

DO NOT scale from this drawing - site measure only.

Notes

- This drawing shall be read in conjunction with all Mechanical and Electrical drawings, Schedules and Specification.
- Contractor to allow for on site co-ordination with the structure and other services and the production of fully dimensioned working drawings prior to installation.
- All equipment to be installed in accordance with the manufacturers instructions.
- All ductwork to comply with DW144.
- All ductwork to be air pressure leakage tested.
- All grille plenum boxes to be independently supported.
- Maximum length of flexible ductwork to be 500mm with no change in direction.
- All basement ventilation supply & extract ductwork, components & fittings to be constructed of materials having a melting point not less than 800°C. In addition, all ductwork shall be rated for stability, integrity & insulation at least equal to the highest fire rated compartment (2 hours) within the basement. All fire rated ductwork must be manufactured, installed & tested in accordance with BS 476-24, ISO 6944, EN 1366-1 & BS EN 13501-3 by a recognised NAMAS/UKAS accredited laboratory.

Legend

- 5IN/13N thrust Car Park Induction jet fan
- Carbon monoxide sensor mounted 1500mm AFFL
- Extract air flow direction

T1	Jun'16	Tender Issue
Rev	Date	Description

Client

Project Title
KIDDERPORE AVENUE LONDON

Drawing Title
CAR PARK LEVEL SB PLANTROOM EXTRACT VENTILATION LAYOUT

MKP CONSULTANTS
ENGINEERING EXCELLENCE
Warren Farm Barn, Andover Road,
Micheldever Station, Winchester, SO21 3FL
Tel. 01962 774665, www.mkpg.com

Drawn	Date	Checked	Approved
PG	Jan'16	AJS	PK

Scale	Size	Issue
1:100	<input type="radio"/> A4 <input type="radio"/> A3 <input checked="" type="radio"/> A1 <input type="radio"/> A0	<input type="radio"/> Preliminary <input checked="" type="radio"/> Tender <input type="radio"/> Construction <input type="radio"/> Contract

Drg. No.
9200-DRG-39ZZ-AL001

Rev
T1