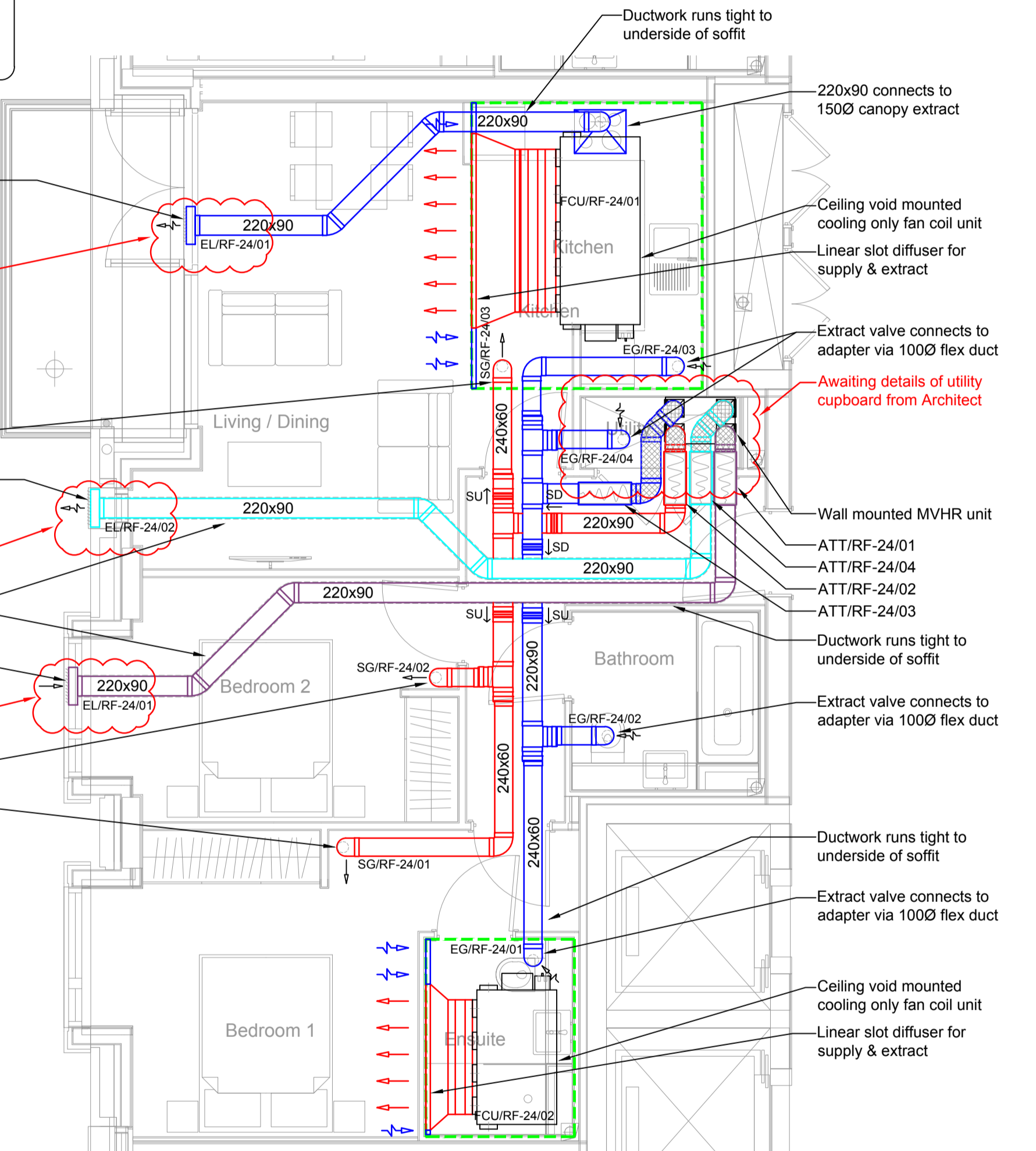
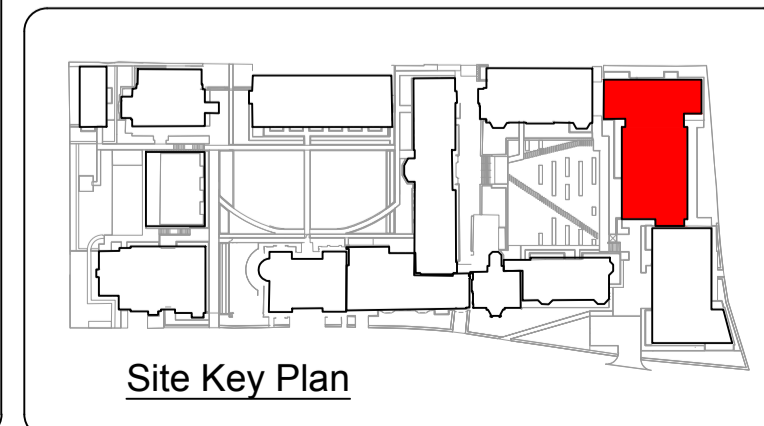
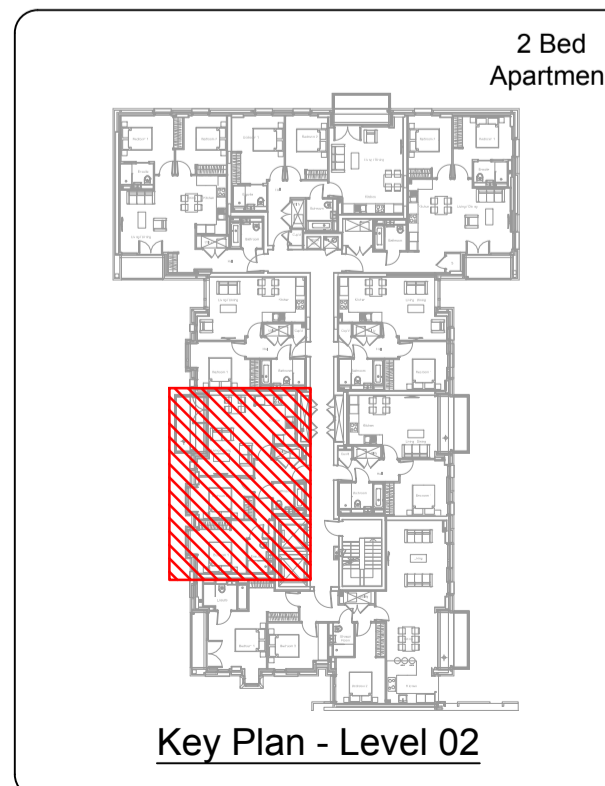
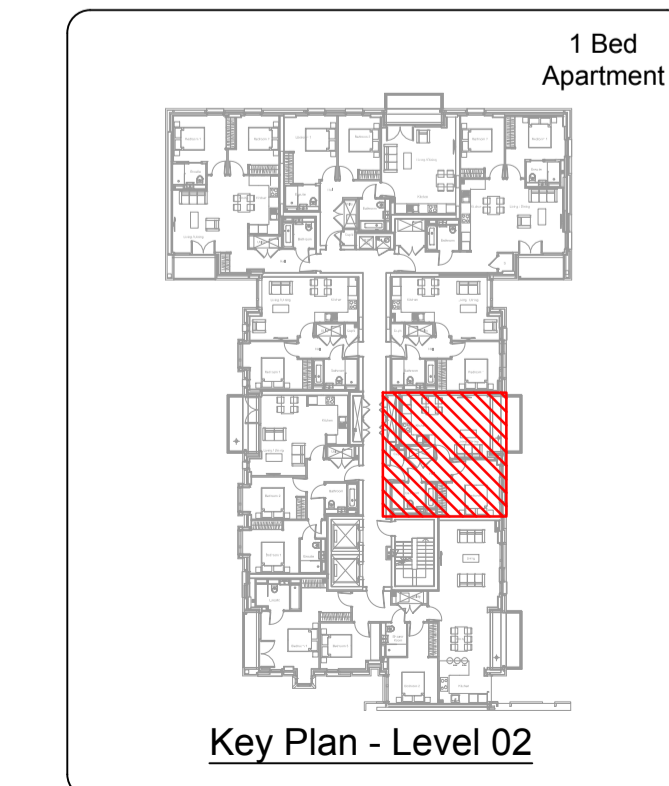


1 Bedroom Apartment Type



2 Bedroom Apartment Type



Notes

- This drawing shall be read in conjunction with all Mechanical and Electrical drawings, Schedules and Specification.
- Contractor to allow for on site co-ordination with the structure and other services and the production of fully dimensioned working drawings prior to installation.
- All equipment to be installed in accordance with the manufacturers instructions.
- All Apartment ventilation installations shall be installed in accordance with the building regulation (in particular Parts B, F&L1A), NHBC, BS5588, BS 5925, BS EN 13465.
- All Apartment ventilation ductwork shall comprise white coloured rigid PVC flat ducting and components in standard sizes of 220x90mm or 204x60mm which correspond to 150mmØ and 100mmØ respectively. Flat duct systems shall be interchangeable with white coloured rigid PVC circular ducting via appropriate adaptors.
- All changes of direction shall utilize 45° bends wherever possible in order to reduce system resistance and noise due to turbulence. If, 90° bends are utilized they shall not be installed in close proximity to each other and double bend sets shall be avoided. All ductwork shall be secured to the structure via the appropriate channel clips or brackets.
- Connections to external louvres shall be via bespoke transition pieces manufactured from either rigid PVC sections or galvanised sheet steel, ensuring angle of taper is not greater than 30° and includes at least one internal splitter to even air flow across full face of louvre. All louvre transitions must be thermally insulated and vapour sealed.
- All ductwork component joints shall be solvent welded socket & spigot arrangements using a suitable PVC solvent adhesive, being sealed completely air tight with white coloured silicone duct sealant and having duct tape applied around the full joint / seam upon completion. All ductwork must be installed to "Class A" pressure classification as stipulated in HVCA Specification DW144 and achieve an "Intermediate Level" cleanliness standard as defined in HVCA Specification DW/TM2, being tested upon completion and prior to commissioning.
- Ensure that any rectangular or circular rigid PVC duct passing through a designed fire barrier is provided with an intumescent "Fire Wrap" sleeve having metal collar, capable of fully compressing the ductwork to completely seal the opening and prevent the passage of air. Fire sleeves/collars shall be installed within the opening using the surrounding structure to provide lateral support on all side in operation. All openings for fire sleeves & collars shall be made good with intumescent duct sealant ensuring gaps are completely filled to their full depth or thickness.
- Kitchen specialist to supply and fit kitchen extract canopy with sufficient duty to meet Part F Building Regulations.
- FCU plenum and supply ductwork to be internally acoustically treated with pyro foam in accordance with the requirements of the acoustic consultant.
- All supply & extract ductwork from the MVHR unit to atmosphere shall be insulated.
- All penetrations through FCU return air plenum are to be hermetically sealed.

Copyright - This drawing and the designs it represents are the property of MKP Consultants Ltd and shall not be copied, circulated or issued other than is necessary to fulfil contractual requirements of the project.

DO NOT scale from this drawing - site measure only.

Legend

- ATT - Attenuator
- EG - Extract grille
- EF - Extract fan
- EL - Extract louvre
- FCU - Fan coil unit
- MVHR - Mechanical ventilation heat recovery unit
- LSG - Linear slot grille
- SD - Set down
- SG - Supply grille
- SL - Supply louvre
- SU - Set up

- Supply ductwork
- Extract ductwork
- Fresh air ductwork
- Exhaust ductwork
- Insulated ductwork
- Denotes boundary of ceiling void plenum
- Denotes ductwork to be acoustically lined
- Supply air path
- Return air path

T2	Oct'16	MVHR system added
T1	May'16	Tender Issue
Rev	Date	Description

Client: **MOUNTA NVIL**

Project Title: **KIDDERPORE AVENUE LONDON**

Drawing Title: **ROSALIND FRANKLIN APARTMENT TYPE VENTILATION LAYOUTS**

Drawn: CJS, Date: MAY'16, Checked: GS, Approved: PK

Scale: N.T.S., Size: A4, A3, A1, A0, Issue: Preliminary, Tender, Construction, Contract

Drg. No: 9200-DRG-39RF-AT001, Rev: T2



- Awaiting kitchen layouts & details from Architect
- Awaiting fire strategy drawing
- Grille locations to be co-ordinated with reflected ceiling plans when available

Drawing based on A & Q drawing no. 9000-DRG-03RF-02010 - Rev T2

MKP CONSULTANTS
ENGINEERING EXCELLENCE

Warren Farm Barn, Andover Road,
Micheldever Station, Winchester, SO21 3FL
Tel. 01962 774665, www.mkpg.com