

Notes

1. This drawing shall be read in conjunction with all Mechanical and Electrical drawings, Schedules and Specification.
2. Contractor to allow for on site co-ordination with the structure and other services and the production of fully dimensioned working drawings prior to installation.
3. All equipment to be installed in accordance with the manufacturers instructions.
4. All ductwork to comply with DW144.
5. All ductwork to be air pressure leakage tested.
6. All grille plenum boxes to be independently supported.
7. Primary supply & extract ductwork within heated spaces to be uninsulated.
8. Fire dampers to be installed where ductwork passes through fire walls/barriers c/w adjacent access doors.
9. Maximum length of flexible ductwork to be 500mm with no change in direction.

Copyright - This drawing and the designs it represents are the property of MKP Consultants Ltd and shall not be copied, circulated or issued other than is necessary to fulfil contractual requirements of the project.

DO NOT scale from this drawing - site measure only.

Legend

- ATT - Attenuator
 - EG - Extract grille
 - EF - Extract fan
 - EL - Extract louvre
 - FCU - Fan coil unit
 - MVHR - Mechanical ventilation heat recovery unit
 - LSG - Linear slot grille
 - SD - Set down
 - SG - Supply grille
 - SL - Supply louvre
 - SU - Set up
-
- - Supply ductwork
 - - Extract ductwork
 - - Fresh air ductwork
 - - Exhaust ductwork
 - - Insulated ductwork
 - - - - Denotes boundary of ceiling void plenum
 - - - - Denotes ductwork to be acoustically lined
 - - Supply air path
 - ← - Return air path
 - ▨ - Residential apartment

T2	Oct'16	Tender Issue. Amendments clouded
T1	Oct'16	Tender Issue
Rev	Date	Description

Client



Project Title
KIDDERPORE AVENUE LONDON

Drawing Title
QUEEN MOTHERS HALL LEVEL BO REFUSE VENTILATION LAYOUT

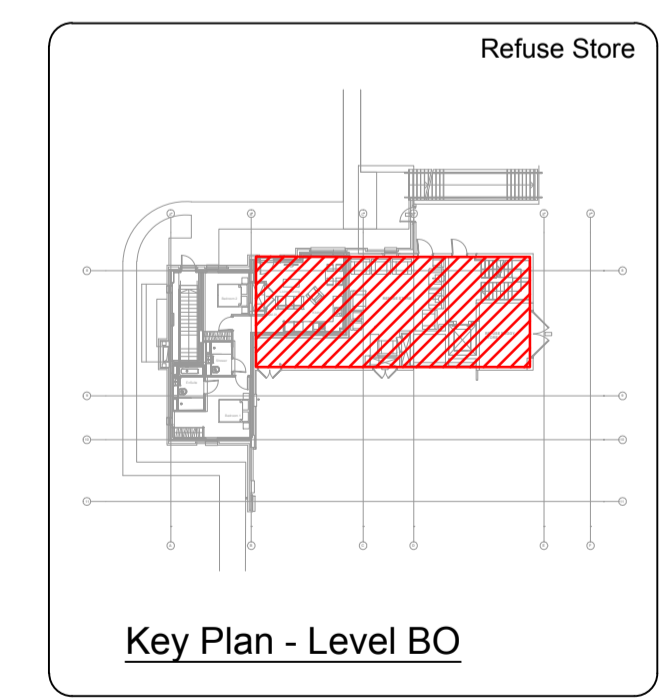
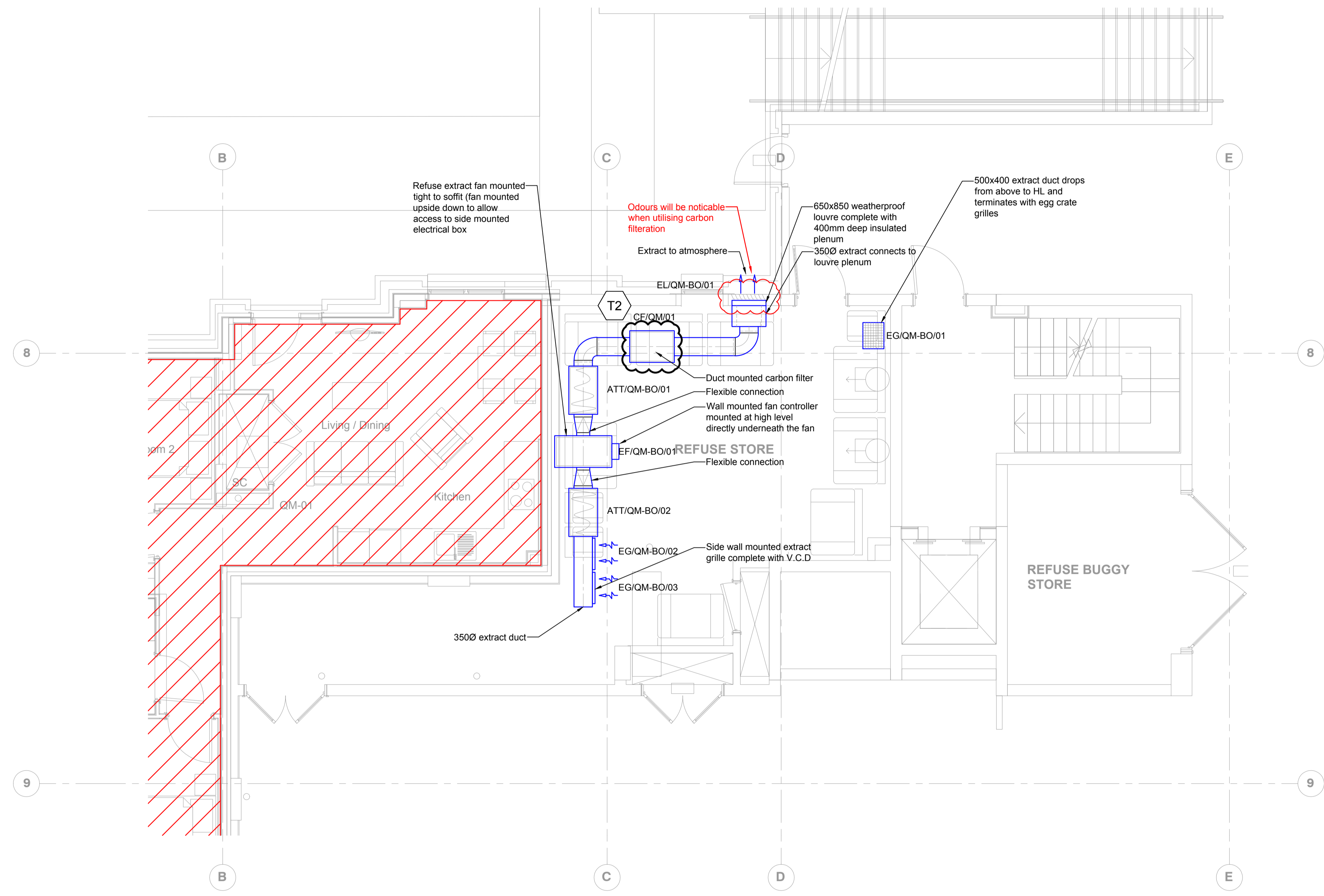
MKP CONSULTANTS
ENGINEERING EXCELLENCE

Warren Farm Barn, Andover Road,
Micheldever Station, Winchester, SO21 3FL
Tel. 01962 774665, www.mkpg.com

Drawn	Date	Checked	Approved
VW	OCT'16	PK	PK

Scale	Size	Issue
1:50	<input type="radio"/> A4 <input type="radio"/> A3 <input checked="" type="radio"/> A1 <input type="radio"/> A0	<input type="radio"/> Preliminary <input checked="" type="radio"/> Tender <input type="radio"/> Construction <input type="radio"/> Contract

Drg. No. **9200-DRG-39QM-BO001** Rev **T2**



Drawing based on A & Q drawing no. 9000-DRG-03QM-BO010 - Rev T2

