

Notes

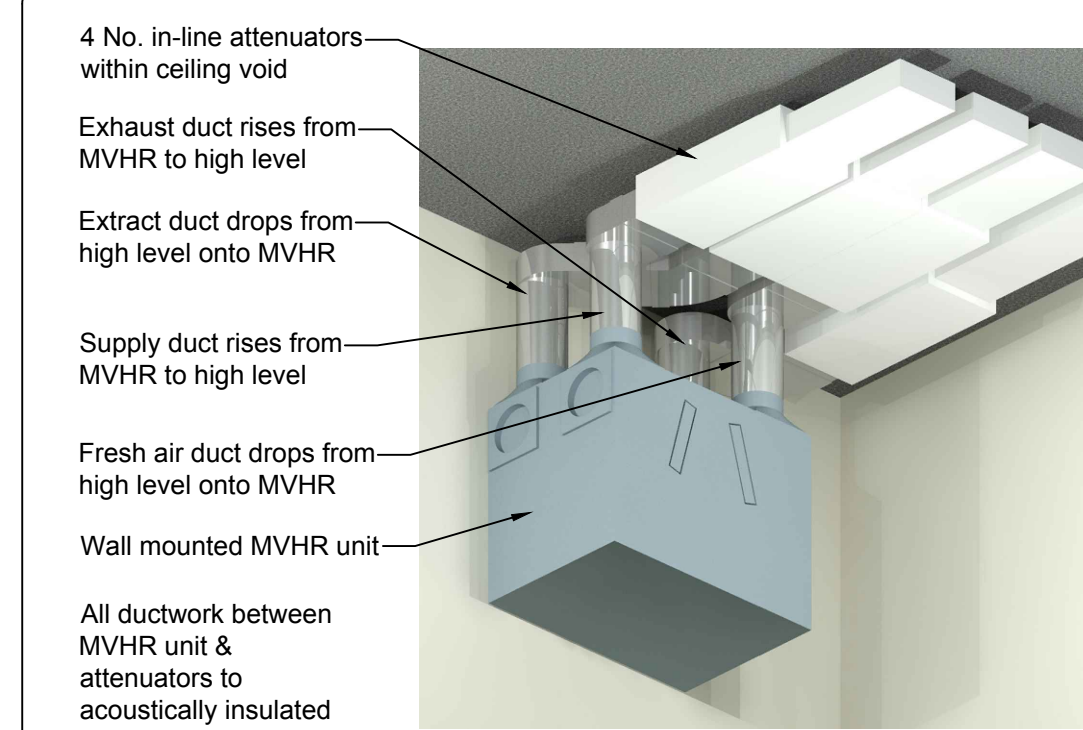
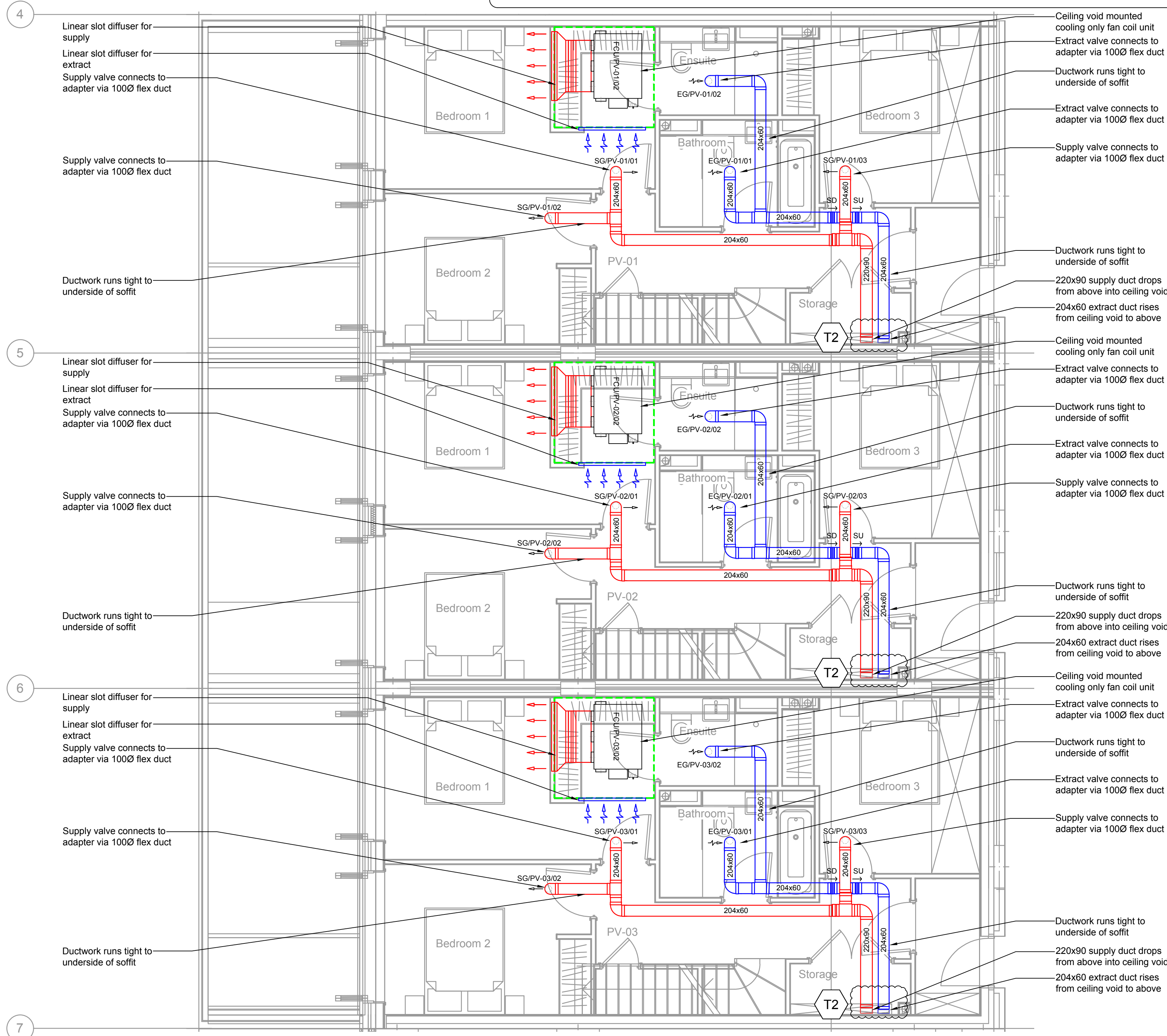
- This drawing shall be read in conjunction with all Mechanical and Electrical drawings, Schedules and Specification.
- Contractor to allow for on site co-ordination with the structure and other services and the production of fully dimensioned working drawings prior to installation.
- All equipment to be installed in accordance with the manufacturers instructions.
- All Apartment ventilation installations shall be installed in accordance with the building regulation (in particular Parts B, F&L1A), NHBC, BS5588, BS 5925, BS EN 13465.
- All Apartment ventilation ductwork shall comprise white coloured rigid PVC flat ducting and components in standard sizes of 220x90mm or 204x60mm which correspond to 150mmØ and 100mmØ respectively. Flat duct systems shall be interchangeable with white coloured rigid PVC circular ducting via appropriate adaptors.
- All changes of direction shall utilize 45° bends wherever possible in order to reduce system resistance and noise due to turbulence. If, 90° bends are utilized they shall not be installed in close proximity to each other and double bend sets shall be avoided. All ductwork shall be secured to the structure via the appropriate channel clips or brackets.
- Connections to external louvres shall be via bespoke transition pieces manufactured from either rigid PVC sections or galvanised sheet steel, ensuring angle of taper is not greater than 30° and includes at least one internal splitter to even air flow across full face of louver. All louver transitions must be thermally insulated and vapour sealed.
- All ductwork component joists shall be solvent welded socket & spigot arrangements using a suitable PVC solvent adhesive, being sealed completely air tight with white coloured silicone duct sealant and having duct tape applied around the full joint / seam upon completion. All ductwork must be installed to "Class A" pressure classification as stipulated in HVCA Specification DW144 and achieve an "Intermediate Level" cleanliness standard as defined in HVCA Specification DW/TM2, being tested upon completion and prior to commissioning.
- Ensure that any rectangular or circular rigid PVC duct passing through a designed fire barrier is provided with an intumescent "Fire Wrap" sleeve having metal collar, capable of fully compressing the ductwork to completely seal the opening and prevent the passage of air. Fire sleeves/collars shall be installed within the opening using the surrounding structure to provide lateral support on all side in operation. All openings for fire sleeves & collars shall be made good with intumescent duct sealant ensuring gaps are completely filled to their full depth or thickness.
- Kitchen specialist to supply and fit kitchen extract canopy with sufficient duty to meet Part F Building Regulations.
- FCU plenum and supply ductwork to be internally acoustically treated with pyro foam in accordance with the requirements of the acoustic consultant.
- All supply & extract ductwork from the MVHR unit to atmosphere shall be insulated.

Copyright - This drawing and the designs it represents are the property of MKP Consultants Ltd and shall not be copied, circulated or issued other than is necessary to fulfil contractual requirements of the project.

DO NOT scale from this drawing - site measure only.

Legend

ATT	-	Attenuator
EG	-	Extract grille
EF	-	Extract fan
EL	-	Extract louver
FCU	-	Fan coil unit
MVHR	-	Mechanical ventilation heat recovery unit
LSG	-	Linear slot grille
SD	-	Set down
SG	-	Supply grille
SL	-	Supply louver
SU	-	Set up
	-	Supply ductwork
	-	Extract ductwork
	-	Fresh air ductwork
	-	Exhaust ductwork
	-	Insulated ductwork
	-	Denotes boundary of ceiling void plenum
	-	Denotes ductwork to be acoustically lined
	-	Supply air path
	-	Return air path



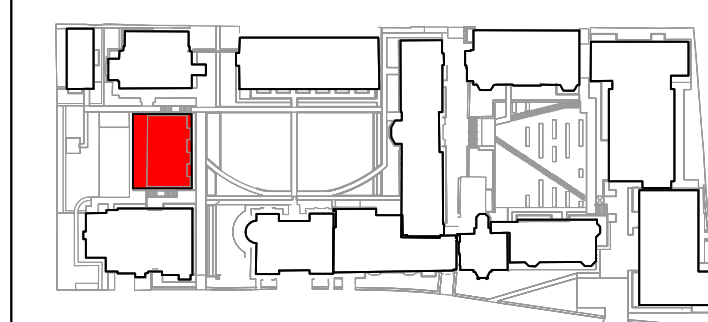
Typical MVHR unit arrangement

Scale - N.T.S

Awaiting fire strategy drawing

Grille locations to be co-ordinated with reflected ceiling plans when available

Drawing based on A & Q drawing no. 9000-DRG-03PV-SB010 - Rev T1



Site Key Plan

Typical Extract Air Valve / Grille

T2	Jun'16	Tender Issue. Amendments clouded.
T1	May'16	Tender Issue
Rev	Date	Description



Project Title
**KIDDERPORE AVENUE
LONDON**

Drawing Title
**PAVILIONS
LEVEL SB
VENTILATION LAYOUTS**

MKP CONSULTANTS
ENGINEERING EXCELLENCE
Warren Farm Barn, Andover Road,
Micheldever Station, Winchester, SO21 3FL
Tel. 01962 774665, www.mkpg.com

Drawn CJS	Date Mar'16	Checked GS	Approved PK
Scale 1:50	Size A4 A3 A1 A0	Issue Preliminary Construction Tender Contract	Rev T2