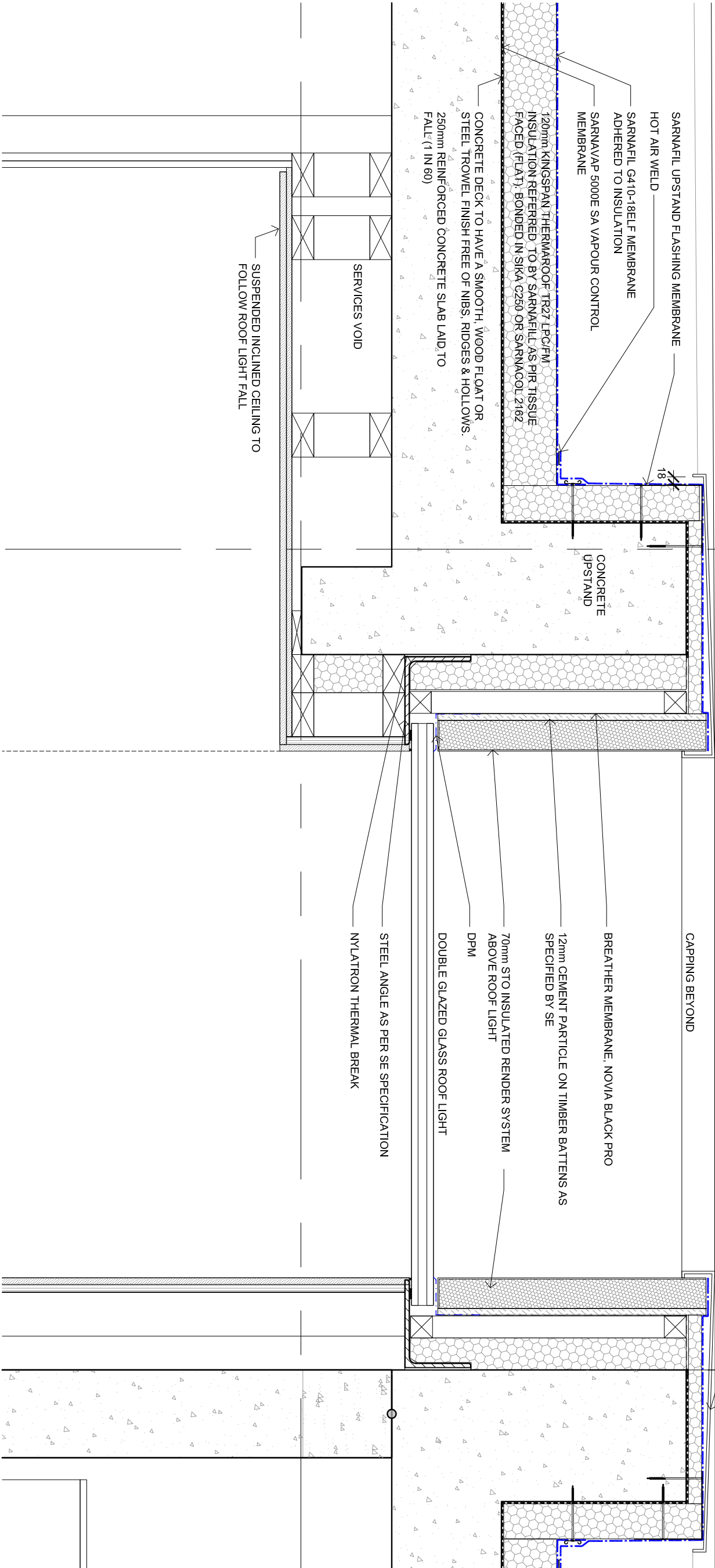


NOTES:  
- ALL PRODUCTS TO BE INSTALLED IN ACCORDANCE WITH WITH MANUFACTURES RECOMMENDATIONS AND RELEVANT BUILDING STANDARDS.  
- REFER TO STRUCTURAL ENGINEERS DOCUMENTS FOR FULL SPECIFICATION INFORMATION.  
- WHERE PRODUCT NAMES & SYSTEMS ARE NOTED, AN EQUIVALENT & APPROVED PRODUCT OR SYSTEM CAN BE USED.

7

6mm THICK GALVANISED BESPOKE MILD STEEL, ONCE WEATHERED COPING IN A SPRAYED FINISH. BOTTOM TO ALIGN WITH BRICK MORTAR JOINT. FALL TO BE NO LESS THAN 1°

8



<p><b>general notes</b></p> <p>THIS DRAWING IS COPYRIGHT OF STUDIO MARK RUTHVEN. THIS DRAWING MUST BE READ IN CONJUNCTION WITH THE DESIGNERS RISK ASSESSMENT, SPECIFICATION AND ALL OTHER RELEVANT DOCUMENTATION AND SHALL BE USED IN ACCORDANCE WITH THE DESIGNERS RISK ASSESSMENT, SPECIFICATION AND ALL OTHER RELEVANT DOCUMENTATION AND WHATEVER NATURE AND HOWEVER ARISING FROM ANY VARIATION MADE TO THIS DRAWING OR IN THE EXECUTION OF THE WORK TO WHICH IT RELATES WHICH HAS NOT BEEN REFERRED TO THEM AND THEIR APPROVAL, OBTAINED.</p> <p>FOR THE PURPOSE OF CONSTRUCTION DO NOT SCALE FROM THIS DRAWING OR THE COMPUTER DIGITAL DATA. ONLY FIGURED DIMENSIONS ARE TO BE USED.</p> <p>IF IN DOUBT ASK.</p>									
<p><b>purpose of issue</b></p> <p>TENDER</p>									
<p><b>notes</b></p>									
<p>rev/ notes</p>			date	by	checked	project name			
* for construction do not scale from this drawing.						115 FROGNAL			
* check all dimensions on site.						LONDON			
						NW3 6XR			
			scale	1:10 @ A3	date	12.06.17	drawing title		
			drawn by	MZ	checked	PW	SECTION DETAIL NO. 6		
							ROOF-LIGHT OVER STAIR		
							project ref.		
							FRG		
							drawing no.		
							FRG-405		
							revision		
							A		

StudioMarkRuthven

architecture

92 Prince of Wales Road, London, NW5 3NE  
11 & 13 Panwell Street, Bruton, BA10 0EO  
T 020 7485 0050