

FIG 1.1

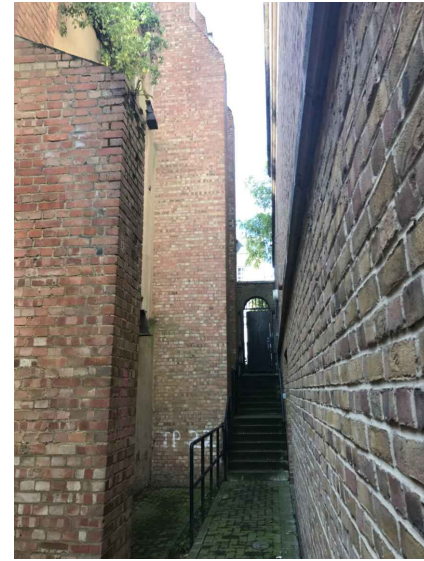


FIG 1.2

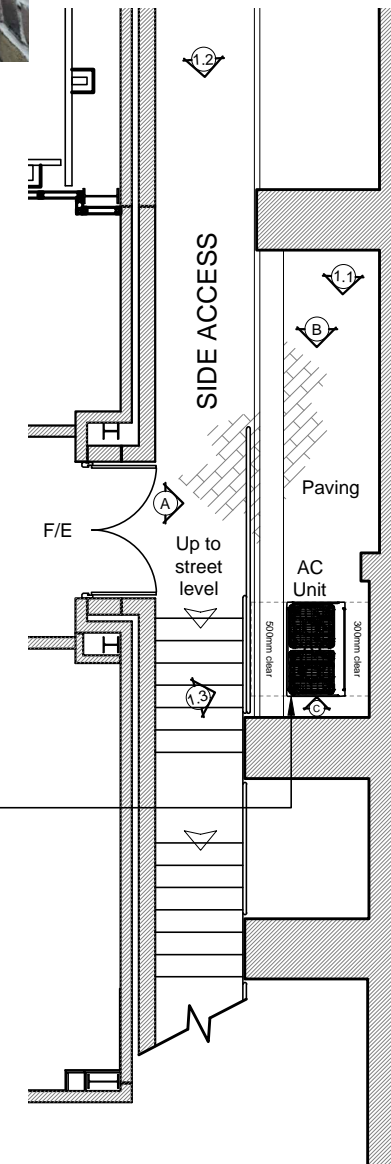


FIG 1.3

This drawing is copyright and must not be reissued, loaned or copied without the written consent of this practice. All dimensions must be checked on site before proceeding and any discrepancies notified immediately.

All drawings to be read in conjunction with consultant structural engineers, mechanical and electrical consultants, acoustic engineers, energy consultants, etc. design calculation sheets, specifications and drawings plus any accompanying product literature, accredited details, etc.

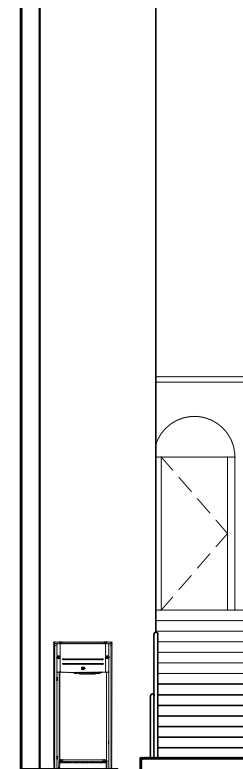
© Copyright Livemore



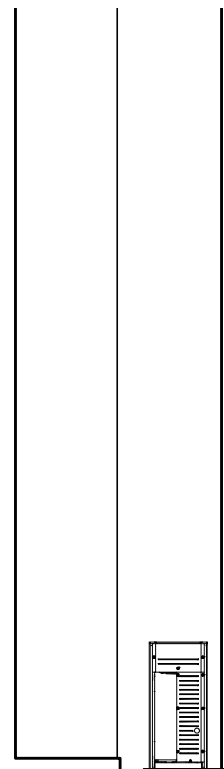
PROPOSED AC CONDENSER UNIT LOCATION  
SCALE 1:100



PROPOSED ELEVATION A  
SCALE 1:100



PROPOSED ELEVATION B  
SCALE 1:100



PROPOSED ELEVATION C  
SCALE 1:100

Rev.	Amendment	Date
B	Planning Issue	25-08-17
A	Location Changed	21-08-17



Client ROYAL MAIL PROPERTY & FACILITIES SOLUTIONS

Project ADMIN RE-FIT PLAN FOR  
LONDON CENTRAL LD  
24-58 ROYAL COLLEGE ST, CAMDEN, NW1 0QA

Title PROPOSED AC CONDENSER  
UNIT LOCATION

Drawn by: TFS Date: 31-07-17

Checked by: AC

Scale @ A3: 1:100 Drg. No.: 15884-21

Leigh-on-Sea Office  
74-76 Broadway  
Leigh-on-Sea  
Essex SS9 1AE

leigh.office@livemore.co.uk  
01702 714977



London Office  
14 Grays Inn Road  
London  
WC1X 8HN

london.office@livemore.co.uk

www.livemore.co.uk