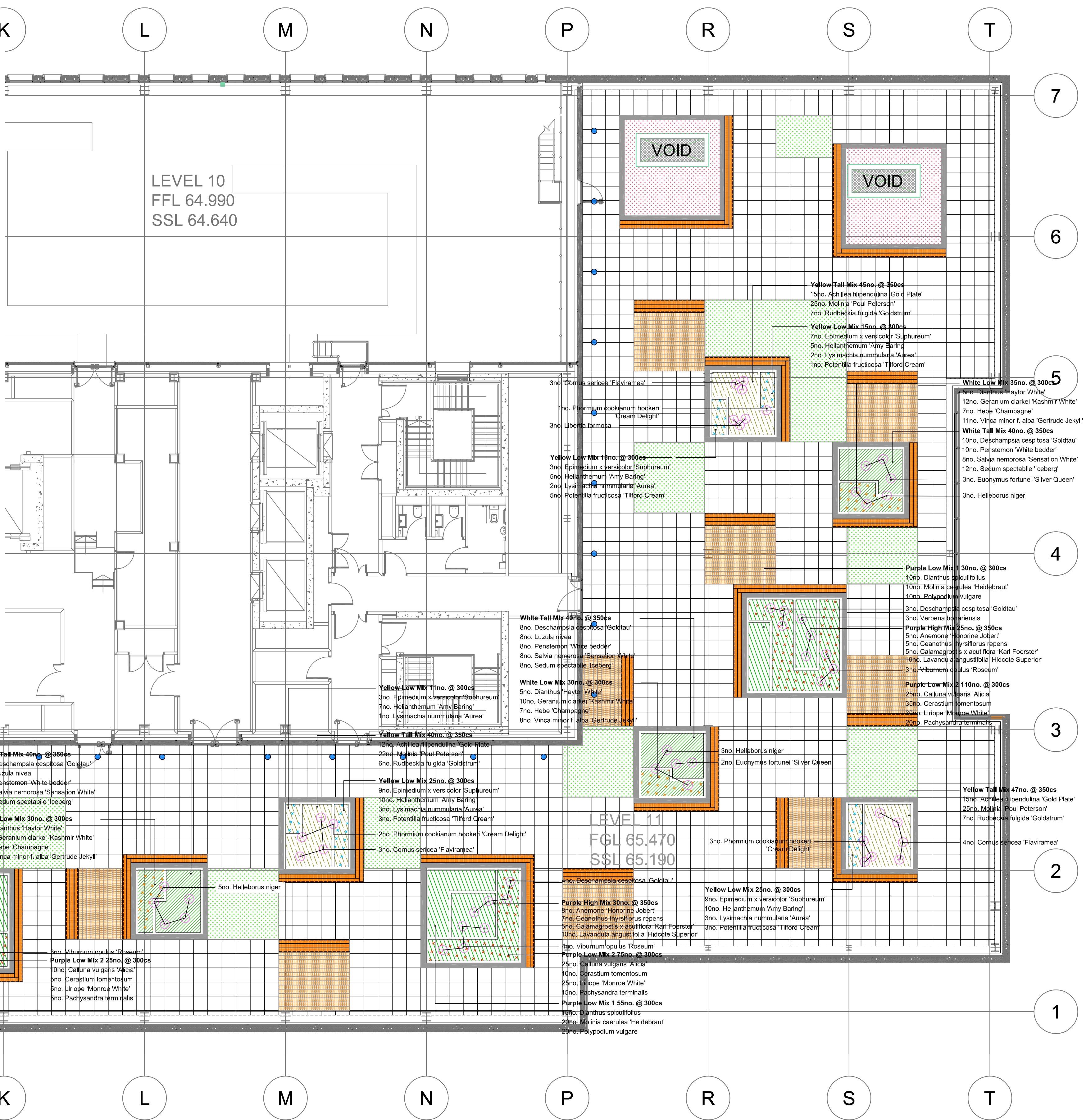


PLANT SCHEDULE				
Specimen Plants				
Cornus sericea 'Flaviramea'	10-12L	80-100cm, branched, 5 breaks		10
Deschampsia cespitosa 'Goldtau'	3-5L	-		10
Euonymus fortunei 'Silver Queen'	10-12L	30-40D, bushy, 11 breaks		8
Helleborus niger	5-7.5L	-		14
Libertia formosa	3-5L	-		3
Phormium cookianum hookeri 'Cream Delight'	10-12L	Triple crown		6
Verbena bonariensis	2L	-		6
Viburnum opulus 'Roseum'	10-12L	60-80cm, branched, 5 breaks		10
Shrub				
Ceanothus thyrsiflorus repens	3L	30-40cm, bushy, 5 breaks	Centres(mm)	No.
Hebe 'Champagne'	3L	20-30cm, bushy, 5 breaks	300	21
Lavandula angustifolia 'Hidcote Superior'	3L	20-30cm, bushy, 5 breaks	300	50
Potentilla fruticosa 'Tilford Cream'	3L	20-30cm, bushy, 4 breaks	300	12
Perennials / Grasses				
Achillea filipendulina 'Gold Plate'	2L	350	Centres(mm)	No.
Anemone 'Honorine Jobert'	2L	350	33	
Calamagrostis x acutiflora 'Karl Foerster'	2L	350	25	
Calluna vulgaris 'Alicia'	2L	300	60	
Cerastium tomentosum	2L	300	50	
Deschampsia cespitosa 'Goldtau'	2L	350	26	
Dianthus 'Haytor White'	1.5-2L	300	15	
Dianthus spiculifolius	1.5-2L	300	30	
Epimedium x versicolor 'Suphureum'	2L	300	31	
Geranium clarkei 'Kashmir White'	2L	300	32	
Helianthemum 'Amy Baring'	2L	300	37	
Liriope 'Monroe White'	2L	300	60	
Luzula nivea	2L	350	16	
Lysimachia nummularia 'Aurea'	1.5-2L	300	11	
Molinia caerulea 'Heidebraut'	2L	300	40	
Molinia 'Paul Peterson'	2L	350	72	
Pachysandra terminalis	2L	300	40	
Penstemon 'White bedder'	2L	350	26	
Polypodium vulgare	2L	300	40	
Rudbeckia fulgida 'Goldstrum'	2L	350	20	
Salvia nemorosa 'Sensation White'	2L	350	24	
Sedum spectabile 'Iceberg'	2L	350	28	
Vinca minor f. alba 'Gertrude Jekyll'	2L	300	27	
Bulb Mix A (Total Area 19m ²)				
1/3 Colchicum speciosum	14-15	20/m2		
1/3 Crocus tommasinianus	5-6	20/m2		
1/3 Muscari botryoides 'Album'	7-8	20/m2		
Bulb B (Total Area 7.5m ²)				
1/2 Colchicum autumnale 'Album'	20-22	20/m2		
1/2 Narcissus 'Mount Hood'	12-14	20/m2		
Bulb C (Total Area 6m ²)				
1/2 Crocus 'Mammoth Yellow'	5-6	20/m2		
1/2 Narcissus bulbodidum 'Golden Bells' +3		20/m2		
NOTE: ALL PLANTING MIXES TO BE INSTALLED RANDOMLY AVOIDING SINGLE SPECIES GROUPS				



KEY	
	MIX 1 - Purples / Blues / Whites SHRUBS / PERENNIALS / GRASSES to areas with up to 450mm depth soils
	MIX 2 - Whites / Greens SHRUBS / PERENNIALS / GRASSES to areas with up to 450mm depth soils
	MIX 3 - Yellows / Greens SHRUBS / PERENNIALS / GRASSES to areas with up to 450mm depth soils
	LAWN - 86m ² Planters with 200mm soils to be turfed with Rowlawm Medallion or equal approved
	SEDUM BLANKET - 24m ² NATUREMAT Sedum Blanket by Blackdown or equal approved
	BULB MIX A - 19m ² 1/3 Colchicum speciosum 1/3 Crocus tommasinianus 1/3 Muscari botryoides 'Album'
	BULB B - 7.5m ² 1/2 Colchicum autumnale 'Album' 1/2 Narcissus 'Mount Hood'
	BULB C - 6m ² 1/2 Crocus 'Mammoth Yellow' 1/2 Narcissus bulbodidum 'Golden Bells'
	SPECIMEN SHRUB PLANTING refer to schedule for details

All dimensions to be verified on site. Figure dimensions to take precedence to those scaled. Any areas indicated on this drawing are for guidance only, no responsibility is taken for their accuracy.

This drawing is the property of Applied Landscape Design Limited. Copyright is reserved by them and the drawing is issued on the condition that it is not copied, reproduced, rescaled or disclosed to any unauthorized person, either wholly or in part, without the written consent in writing of Applied Landscape Design.

© 2017 Applied Landscape Design Limited. All rights reserved.

CLIENT: **carillion**

LANDSCAPE ARCHITECT: **ALD applied landscape design**
The Threshing Barn, Bignell Park Bars, Chesterton, Oxfordshire, OX26 1TD. Tel: 01869 249776, Fax: 01869 327513, Email: mail@appliedlandscape.co.uk

PROJECT: **S2 ROOF, KXC**

DRAWING TITLE: **S2 ROOF PLANTING PLAN LAYOUT**

drawn: KH, checked: CB

scale: 1:100 @ A1, date: 9th August 2017

status: COMMENT, xref file ref: ALD775_PLbase

PROJECT NO: ALD775, DRAWING NUMBER: KXC-S2-001-ALD775-L-90-0401, REVISION: 01

REVISIONS:

Rev.	Update	Date
01	First formal issue for comment.	01.08.17