

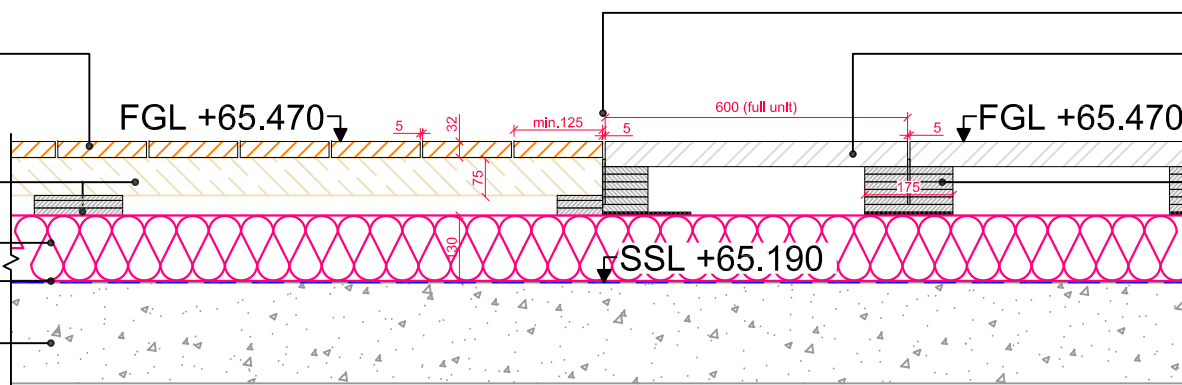
176mm wide x 32mm thick x 3020mm long 'Carbonised Charred' composite deck board by Millboard or equal and approved. Attached to timber bearers below using Millboard Durafix hidden screw fixings as per manufacturers guidelines.

02 75 x 47mm treated timber bearer, supported on Caro pedestals/shims as required to achieve levels.

Insulation layer by others (nominal 130mm thick).

Waterproofing layer (by others).

Concrete roof-slab by others.



5mm joint between paving and deck.

600 x 600 x 50mm graphite coloured Mayfair concrete paving flags by Tobermore or equal and approved. Refer to ALD g.a. drawing KXC-S2-001-L-ALD775-90-0101 for colour locations. Full unit at deck interface.

Ø175mm x 15mm thick stackable pedestals by Caro with 2mm thick shim/s at base as required for fine tuning of levels.

**DETAIL 01:**  
**SECTION THROUGH DECK INTERFACE WITH PCC PAVING (ACROSS DECK BOARDS)**

LANDSCAPE ARCHITECT:



The Threshing Barn  
Bignell Park Barns  
Chesterton  
Oxfordshire  
OX26 1TD

Tel: 01869 249776  
Fax: 01869 327513  
Email: mail@appliedlandscape.co.uk

© 2017 Applied Landscape Design Limited. All rights reserved.

Rev.	Update	Date
02	Updated following DTM review.	07.08.17
01	Issued for Contractors Proposals.	19.07.17

PROJECT:

S2 ROOF, KXC

CLIENT:



drawn:

AB

scale:

1:15 @ A3

status:

Contractors Proposal

checked:

AnO

date:

19th July 2017

xref file ref:

ALD775\_detailsbase

DRAWING TITLE:

SECTION ACROSS DECK  
INTERFACE WITH PAVING

DRAWING NUMBER:

KXC-S2-001-ALD775-L-90-723

REVISION:

02

ORIGINAL A3 SIZE SHEET