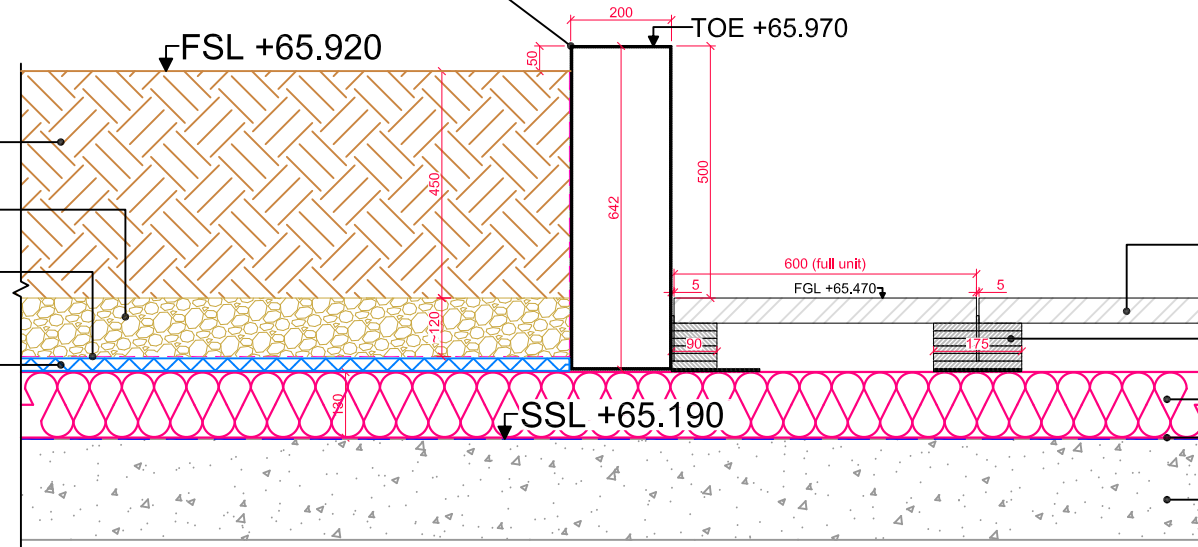


- 02 Steel planter frame clad with 3mm thick steel panels (fixings hidden) polyester powder coated RAL 9006, to form rigid open box. To be formed of four sections and assembled on site, sections bolted together from inside with joints at midway point of each face. Planter supported on leveling shims as required and pinned into insulation to prevent movement. Bench frame and planter boxing to be bolted together to form one rigid unit. Note internal bracing not shown for clarity.
- 450mm depth GT4 lightweight soil by GreenTech or equal and approved. Soil to terminate 50mm below edge of planter after settlement.
- 120mm approx. depth Leca free-draining lightweight aggregate at base of planter.
- Permeable geotextile layer, e.g. Terram 1000 by Terram or equal and approved. Note, geotextile layer to wrap up sides of planter and terminate just below soil level so as not to be visible.
- 02 25mm drainage board with integral geotextile layer.



- 600 x 600 x 50mm graphite coloured Mayfair concrete paving flags by Tobermore or equal and approved. Refer to ALD g.a. drawing KXC-S2-001-L-ALD775-90-0101 for colour locations.
- Ø175mm x 15mm thick stackable pedestals by Caro with 2mm thick shim/s at base as required for fine tuning of levels.
- Insulation layer by others (nominal 130mm thick).
- Waterproofing layer (by others), wraps up face of steel upstand at parapet interface.
- Concrete roof-slab by others.

**DETAIL 01:
SECTION THROUGH PLANTER NTERFACE WITH PCC PAVING**

LANDSCAPE ARCHITECT:



The Threshing Barn
Bignell Park Barns
Chesterton
Oxfordshire
OX26 1TD


Tel: 01869 249776
Fax: 01869 327513
Email: mail@appliedlandscape.co.uk

© 2017 Applied Landscape Design Limited. All rights reserved.

Rev.	Update	Date
02	Updated following DTM review.	07.08.17
01	Issued for Contractors Proposals.	19.07.17

PROJECT: **S2 ROOF, KXC**

CLIENT:



drawn: AB	checked: AnO
scale: 1:15 @ A3	date: 19th July 2017
status: Contractors Proposal	xref file ref: ALD775_detailsbase

DRAWING TITLE:
**SECTION THROUGH PLANTER
INTERFACE WITH PAVING**

DRAWING NUMBER: KXC-S2-001-ALD775-L-90-729	REVISION: 02
--	------------------------