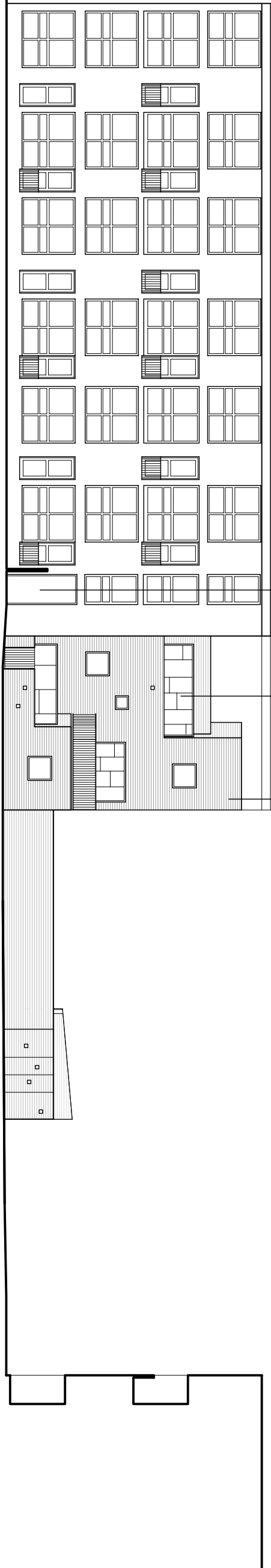


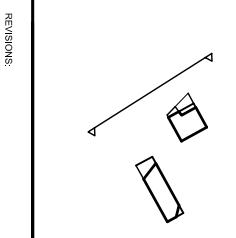
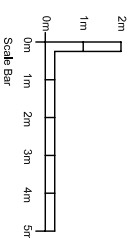
01_Existing Elevation 12



NEW MAIN ENTRANCE
97-104 & 105-116
KILN PLACE

COMPOSITE TIMBER/
ALUMINUM WINDOWS

BRICKWORK



REVISIONS:

02_Proposed Elevation 12

PETER BARBER
ARCHITECTS

173 Kings Cross Road, London WC1X 8EZ
Tel: +44 (0)20 7333 4499 Fax: +44 (0)20 7333 6999
info@peterbarberarchitects.com www.peterbarberarchitects.com

Site: Kiln Place, Gospel Oak

Client: London Borough of Camden /
E.C. Harris

Scale: 1/250 @ A3
Date: 11/16/16

Drawn by: J. Barber
Checked by: P. Barber

Project: EXISTING & PROPOSED
ELEVATION 12
Site: 597 Elevation from Kiln Place

Drawing No: 116_E_12 Rev: C