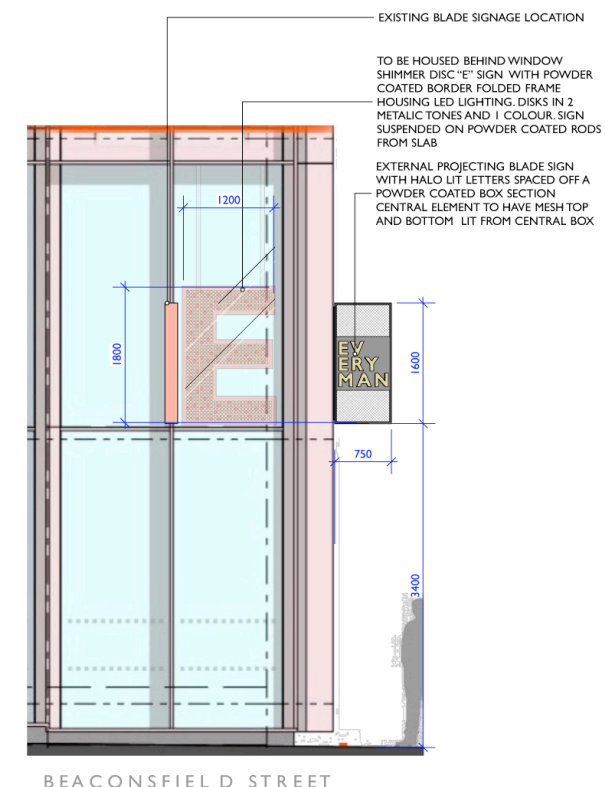
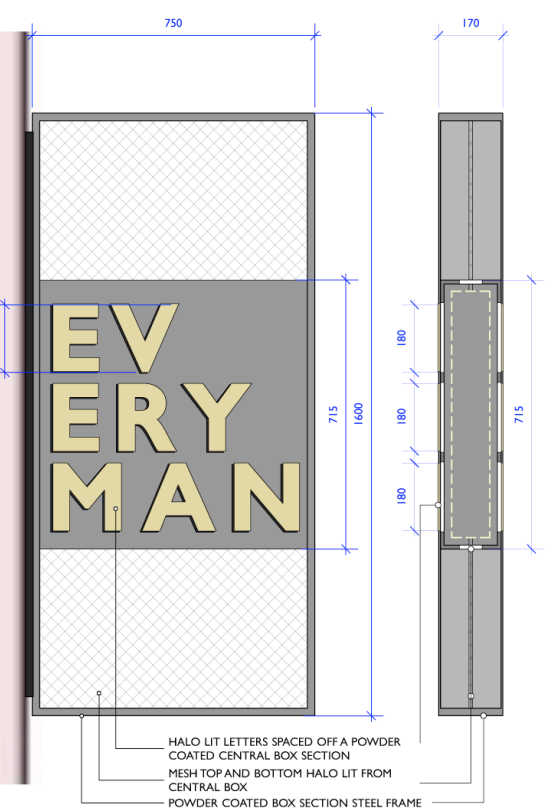


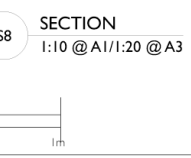
- S12- INTERNALLY LOCATED - SIGN "E" WITH INEON ILLUMINATION, INWARD FACING SIGN. NO EXTERNAL FACING ILLUMINATION
- S2- INTERNALLY LOCATED SUSPENDED - SIGN "EVERYMAN" WITH INTERNAL LED ILLUMINATION
- S7- INTERNALLY LOCATED - SIGN "EVERYMAN" WITH RED NEON SAT IN OPEN TRAY
- S1- INTERNALLY LOCATED SUSPENDED SHIMMER DISC - "E" SIGN WITH CONCEALED LED ILLUMINATION
- S8- PROJECTING "EVERYMAN" BLADE SIGNAGE WITH INTERNAL ILLUMINATION



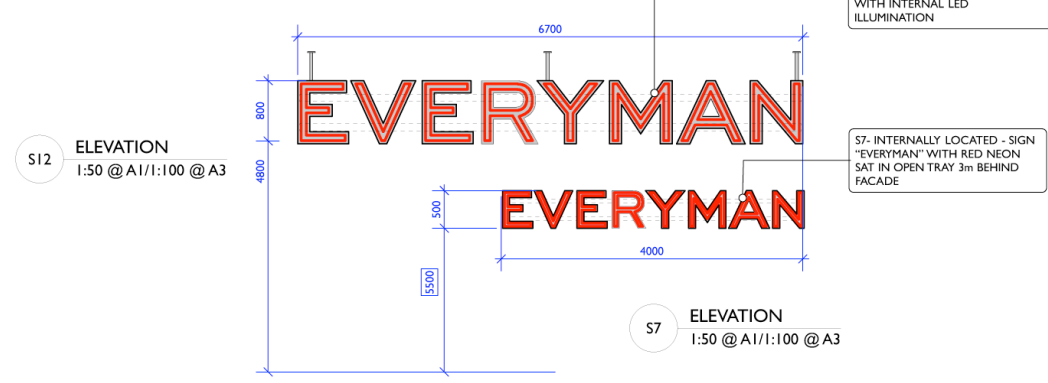
S1, S8 ELEVATION
1:50 @ A1/1:100 @ A3



S8 ELEVATION
1:10 @ A1/1:20 @ A3



S8 SECTION
1:10 @ A1/1:20 @ A3

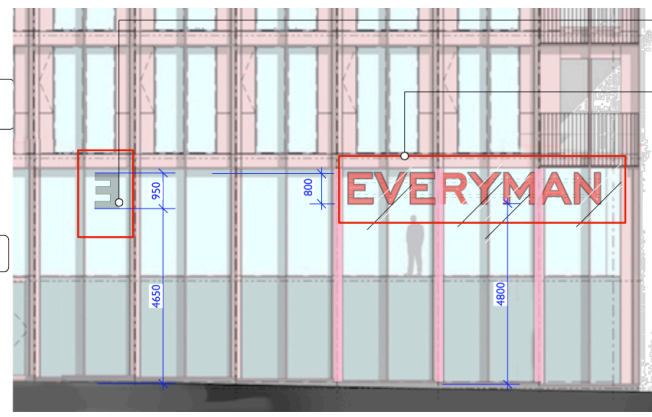


S12 ELEVATION
1:50 @ A1/1:100 @ A3

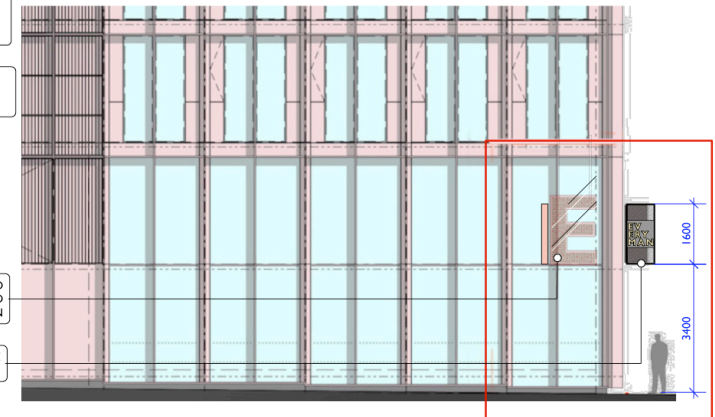
S7 ELEVATION
1:50 @ A1/1:100 @ A3



2 SIDE ELEVATION
1:200 @ A1/1:400 @ A3



- S12- INTERNALLY LOCATED - SIGN "E" WITH INEON ILLUMINATION, INWARD FACING SIGN. NO EXTERNAL FACING ILLUMINATION
- S2- INTERNALLY LOCATED SUSPENDED - SIGN "EVERYMAN" WITH INTERNAL LED ILLUMINATION
- S1- INTERNALLY LOCATED SUSPENDED SHIMMER DISC - "E" SIGN WITH CONCEALED LED ILLUMINATION
- S8- PROJECTING "EVERYMAN" BLADE SIGNAGE WITH INTERNAL ILLUMINATION



2 SIDE ELEVATION
1:200 @ A1/1:400 @ A3

Notes
This drawing should not be scaled. The contractor is to verify all dimensions and conditions on site. This drawing is the property of Hudson Rock Design Ltd and they reserve the copyright. It is issued on the understanding that it will not be copied, reproduced or disclosed in whole or in part to any unauthorised party without written permission.

- ALL SIGNAGE IS INDICATIVE ONLY.
- REFER TO DWG 007KGX/450 FOR SETTING OUT.
- SIGNAGE CONTRACTOR TO LIAISE WITH STRUCTURAL ENGINEER TO CONFIRM WEIGHT LOADINGS AND FIXING DETAILS TO ALL LARGE FORMAT STEEL SIGNAGE.
- ALL SIGNAGE BY THE SIGNAGE CONTRACTOR UNLESS OTHERWISE SPECIFIED.
- NO SIGNAGE CONSTRUCTION WORK TO BE CARRIED OUT UNTIL ADVERTISING PLANNING CONSENT HAS BEEN APPROVED
- ENSURE ALL POWER IS CONCEALED
- ALL SIGNAGE DIMENSIONS ARE APPROX.
- MAIN CONTRACTOR TO LIAISE WITH SIGN INSTALLER TO ENSURE ALL SERVICES REQUIRED ARE SUPPLIED.



S8 SIGN REFERENCE IMAGE
SIGN EXAMPLES SHOWN TO BE CONSTRUCTED WITH METAL MESH & SOLID STEEL SHEET PORTION. ALLOW TO POWDER COAT ALL TO PREVENT RUSTING & CONCEAL ANY MANUFACTURER IMPERFECTIONS, AS PER REF IMAGE ABOVE BY NIKE.



S1 SIGN REFERENCE IMAGE
SIGN TO BE CONSTRUCTED WITH A FOLDED POWDER COATED STEEL TRAY W/ SEQUIN DISKS MOUNTED TO FRONT FACE.
AS NEON LIGHTING IS NOT ALLOWED, ALLOW FOR A CONCEALED LED STRIP LIGHT TO WRAP AROUND "E" SIGN PERIMETER AND WASHER LIGHT OVER SEQUINS.
NOTE: ALL "E" SIGNS ON THIS DWG TO BE HOUSED WITH IN THE INTERIOR OF THE BUILDING / BEHIND THE GLAZING.

DATE	REVISION	NO.

PROJECT
EVERYMAN CINEMA
KINGS CROSS
BUILDING R7
HANDYSIDE STREET
LONDON N1C 4DN

DRAWING
SHOP FRONT SIGNAGE

STATUS
FOR APPROVAL

DATE
AUG 2017

DRAWN:
RH

SCALE
AS SHOWN

DRAWING NUMBER:
007KGX/ 600

REV. NO.



Hudson Rock Design Ltd Studio 9.5 Durham Yard, Teesdale St, London, E2 4QJ