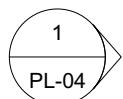
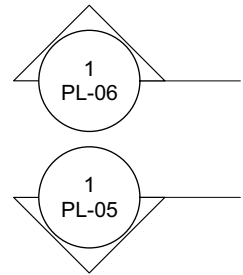


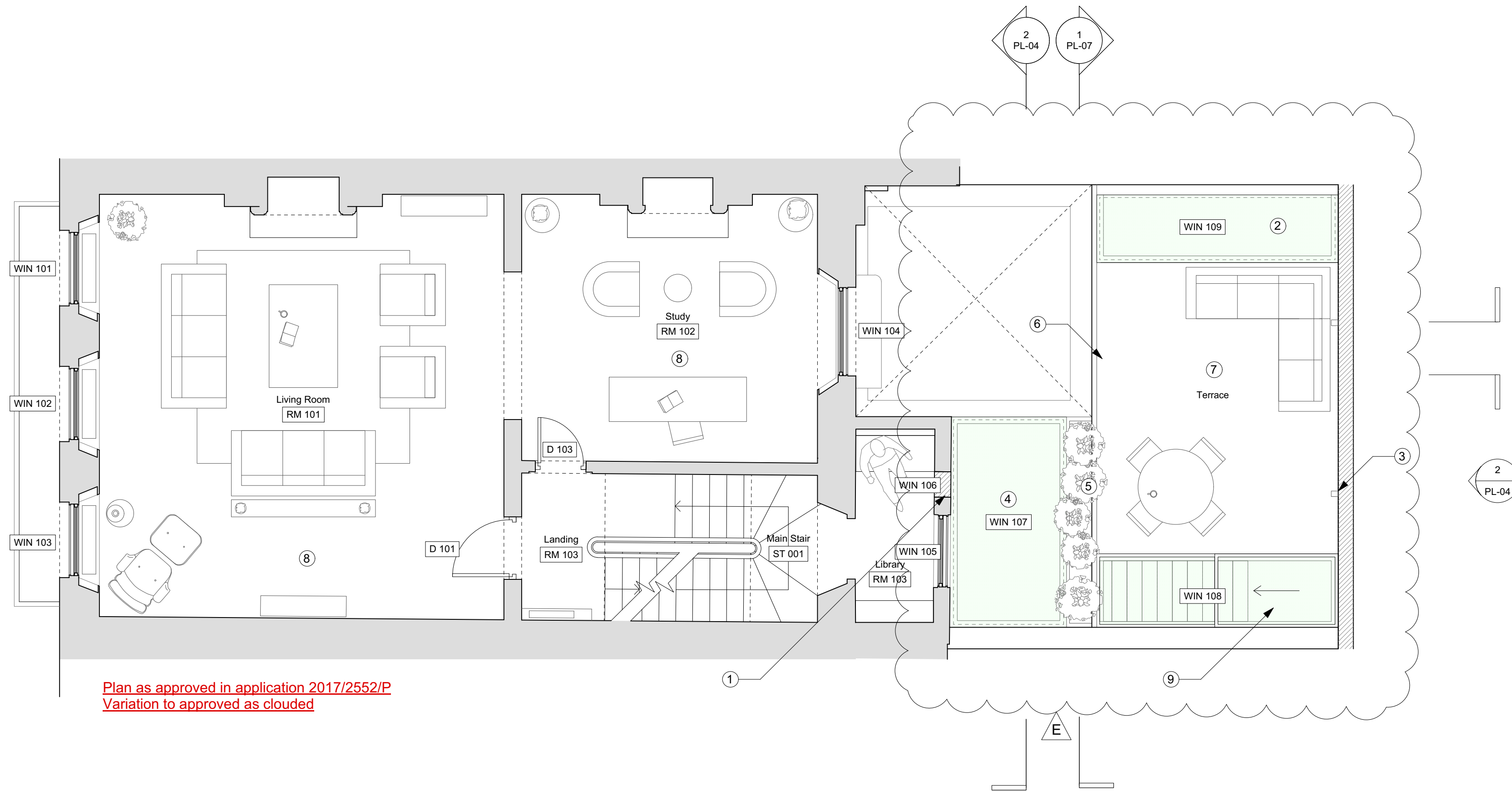
Notes

- Opening carefully infilled. Render repaired to exterior and original panelling repaired and restored to interior, and repainted.
- 1100 Raised rooflight to boundary
- 2no. new discrete external lighting to terrace
- Double glazed low level roof light to extension, providing separation between existing retained closet wing and new roof terrace.
- Existing AC condenser unit to rear facade relocated away from visible boundary and discretely integrated at low level into acoustic baffled 1100 boundary planter.
- PPC metal balustrade
- Roof terrace with stone floor finish.
- Timber parquet floor to living room and study
- 1100 Raised roof light to boundary with stair to terrace beneath, accessed by automated rooflight hatch.

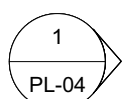
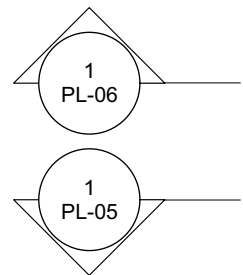
E



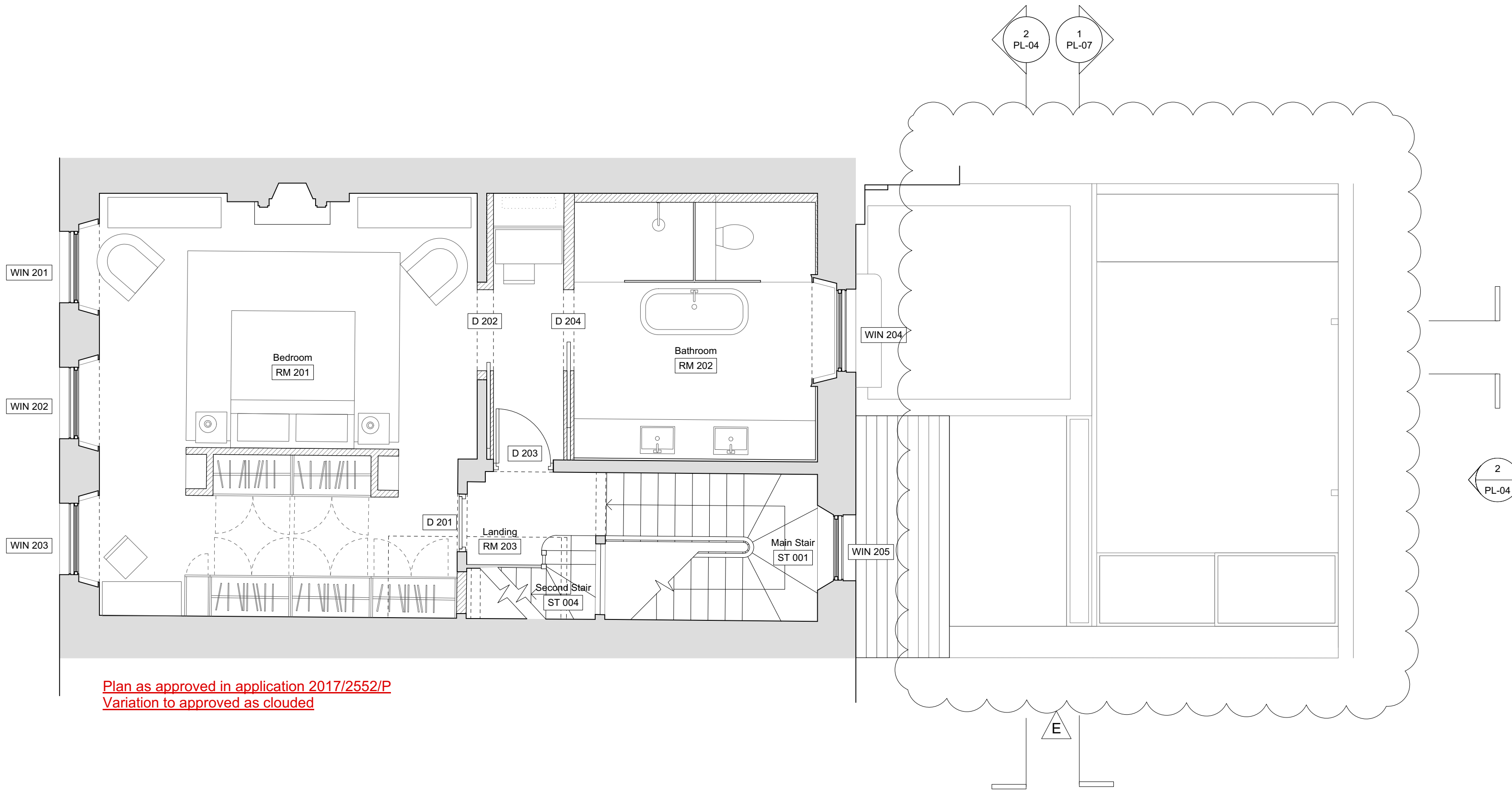
1 First Floor Plan As Proposed
Scale 1:50 @ A1 / 1:100 @ A3



Plan as approved in application 2017/2552/P
Variation to approved as clouded



2 Second Floor Plan As Proposed
Scale 1:50 @ A1 / 1:100 @ A3



Plan as approved in application 2017/2552/P
Variation to approved as clouded

0 1 2 3 4 5 M



General Notes

- New openings to be created in line with Structural Engineer's design and specification
- Allow for new connections to below ground drainage