

Project

UCL IoE 20 Bedford Way Masterplan

UK & IRELAND

Client

UCL

Consultant

AECOM
 Aecom House
 63-77 Victoria Street
 St Albans, Herts
 AL1 3ER
 United Kingdom
 Tel +44 (0)1727 535000
 www.aecom.com

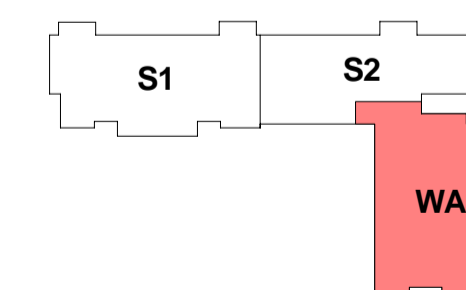
Notes

- All existing structure shown on this drawing is based on partial record drawings. All details will need to be confirmed.
- Do not scale from this drawing. Work to figured dimensions only.
- This drawing is to be read in conjunction with:
 - General notes drawing 20BW-ACM-00-ZZ-DR-SE-00001
 - Design reports
 - Survey and Interpretative Reports
 - Project Specifications and Performance Specifications
 - Health and Safety Hazard Register
 - Relevant drawings and documentation issued by the architect, engineers and specialists.
 - Building Information Model (BIM)
 - Outline Construction Methodology
 - Movements and Tolerances Report
- All dimensions are in mm except levels which are in metres and relate to [ordnance datum]. Existing slab thickness shown in Inches as per record drawings.
- Any discrepancies shall be referred to the Designer before work commences.
- Existing services are to be identified prior to demolition works taking place and measures should be put in place to ensure that they are adequately protected throughout the course of the works. If it is not possible to adequately protect existing services during demolition then works must not be carried out and the design team must be consulted.
- Listed building consent is required before any of these works take place.

Issue/Revision

PI.2	01/08/17	Lift position revised
PI.1	20/04/17	Stage 3 Issue
PI.0	31/03/17	Stage 3 Issue
Rev.	Date	Description

Key Plan



Purpose Of Issue

Stage 3

Project Number

60528577

Sheet Title

Wing Block A
 Plans
 Level 1 General Arrangement
 Phase 1

Sheet Number

20BW-ACM-WA-01-DR-SE-01301

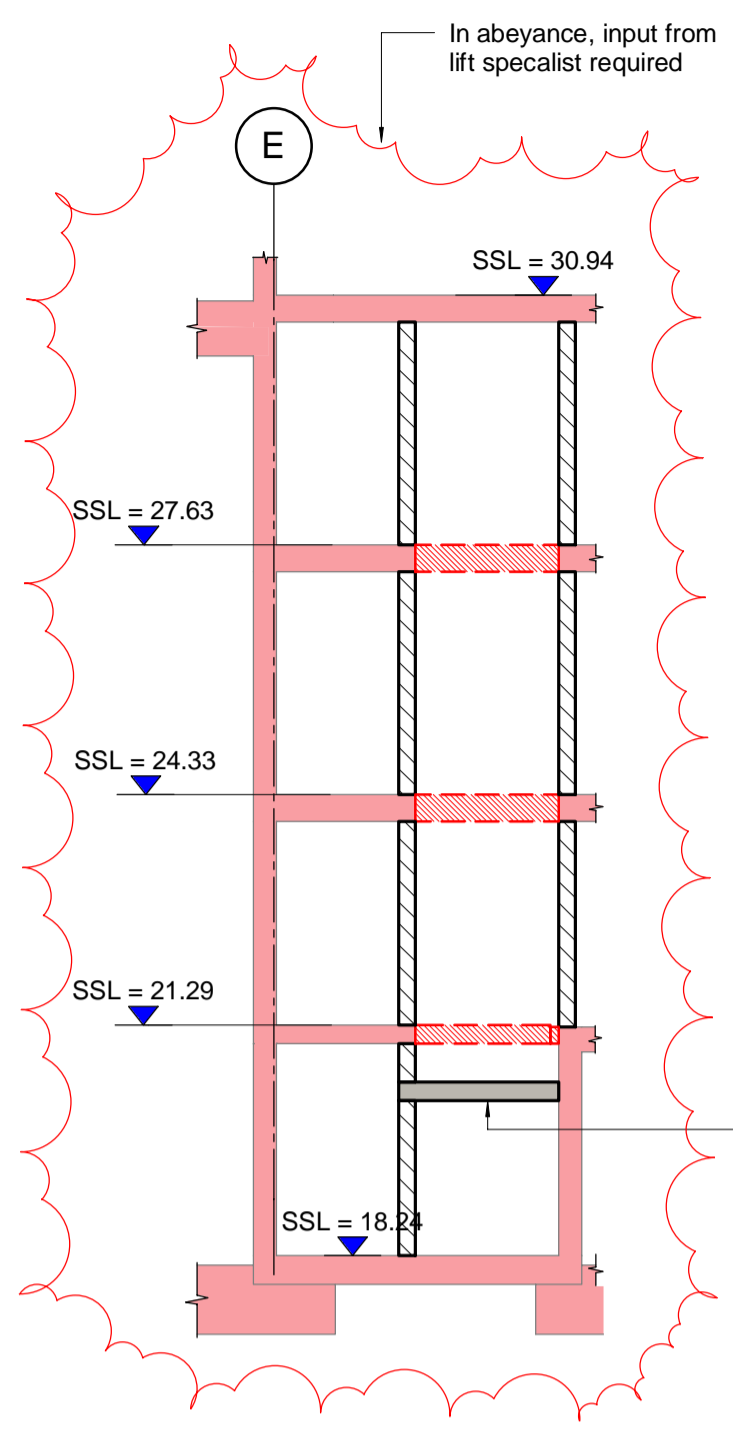
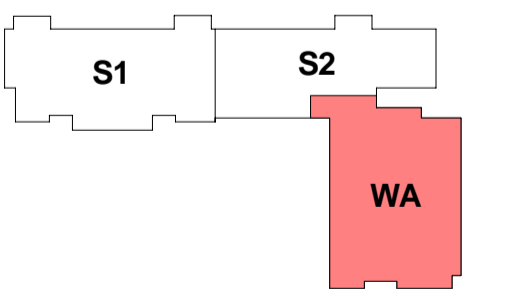
Scale: 1 : 100@A1

Rev: P1.2

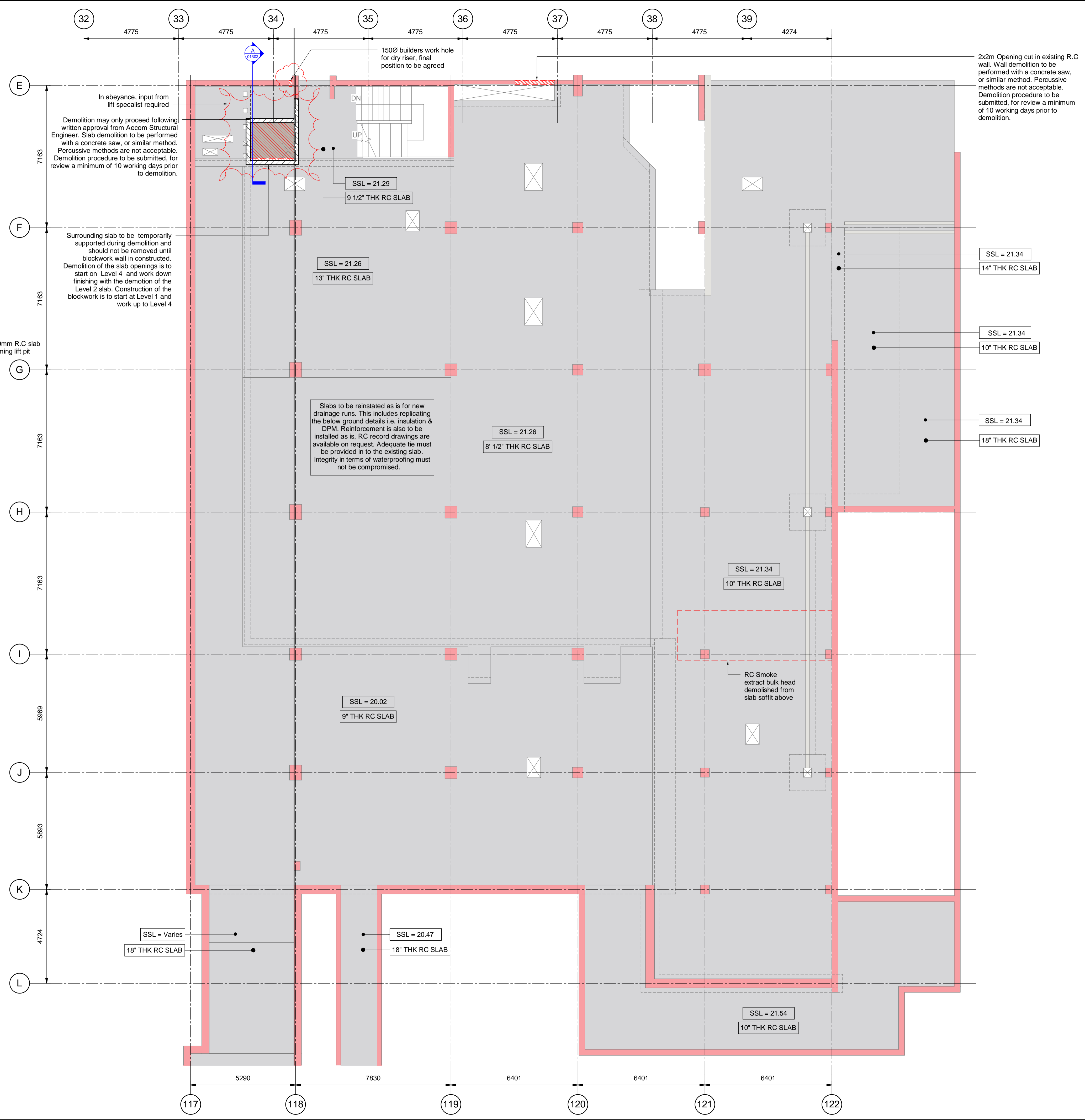
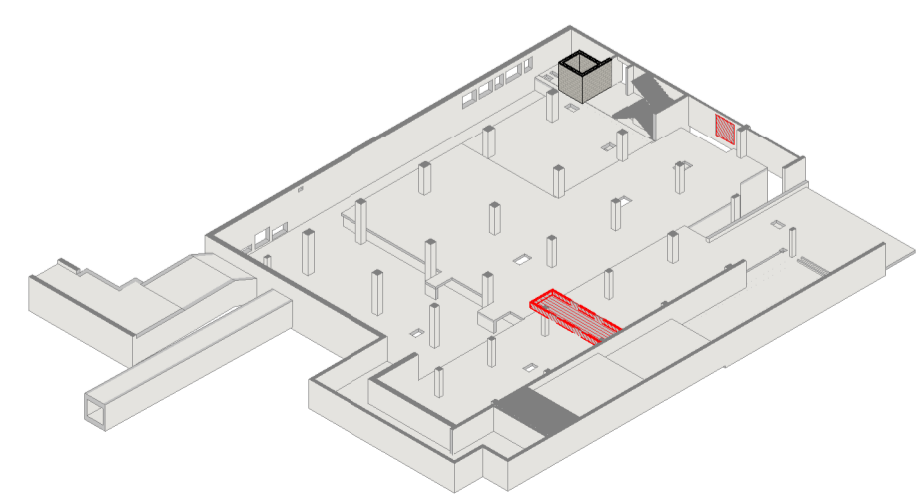
This drawing has been prepared for the use of AECOM's client. It may not be used, modified, reproduced or relied upon by third parties, except as agreed by AECOM or as required by law. AECOM accepts no responsibility, and denies any liability, whatsoever, to any party that uses or relies on this drawing without AECOM's express written consent. Do not scale this document. All measurements must be obtained from the stated dimensions.

- All existing structure shown on this drawing is based on partial record drawings. All details will need to be confirmed.
- Do not scale from this drawing. Work to figured dimensions only.
- This drawing is to be read in conjunction with:
 - General notes drawing 20BW-ACM-00-ZZ-DR-SE-00001
 - Design reports
 - Survey and Interpretative Reports
 - Project Specifications and Performance Specifications
 - Health and Safety Hazard Register
 - Relevant drawings and documentation issued by the architect, engineers and specialists.
 - Building Information Model (BIM)
 - Outline Construction Methodology
 - Movements and Tolerances Report
- All dimensions are in mm except levels which are in metres and relate to [ordnance datum]. Existing slab thickness shown in inches as per record drawings.
- Any discrepancies shall be referred to the Designer before work commences.
- Existing services are to be identified prior to demolition works taking place and measures should be put in place to ensure that they are adequately protected throughout the course of the works. If it is not possible to adequately protect existing services during demolition then works must not be carried out and the design team must be consulted.
- Listed building consent is required before any of these works take place.

Rev.	Date	Description
P1.2	01/08/17	Lift position revised
P1.1	20/04/17	Stage 3 Issue
P1.0	31/03/17	Stage 3 Issue



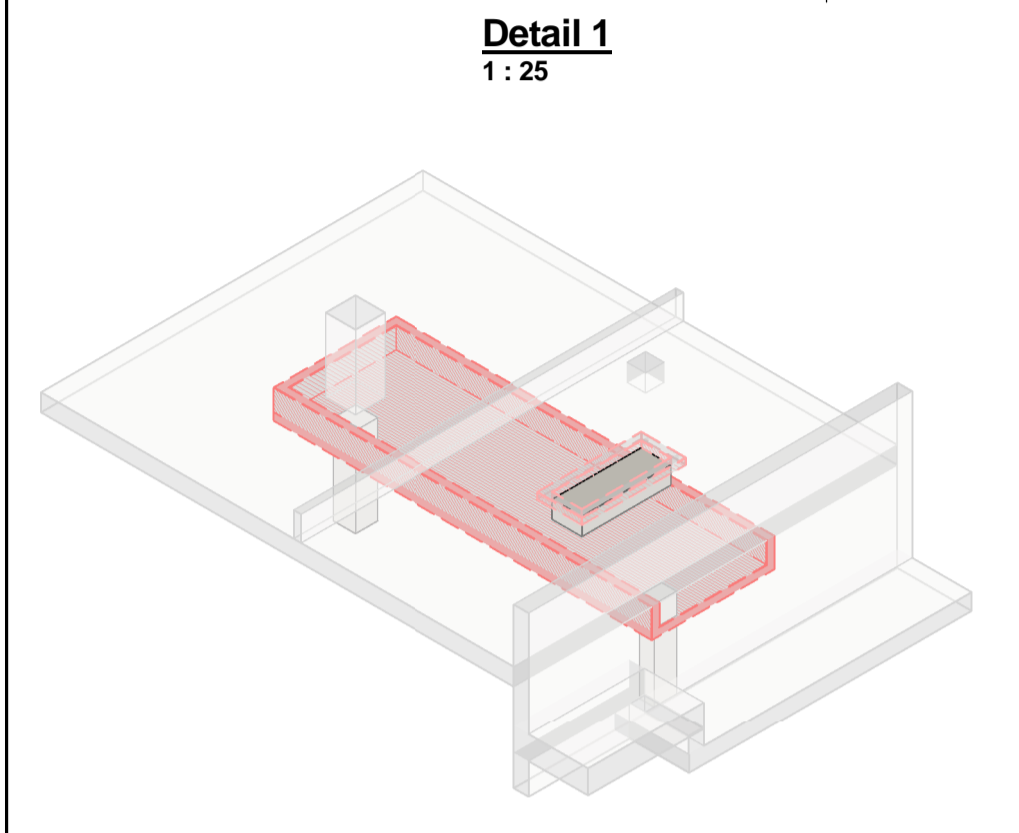
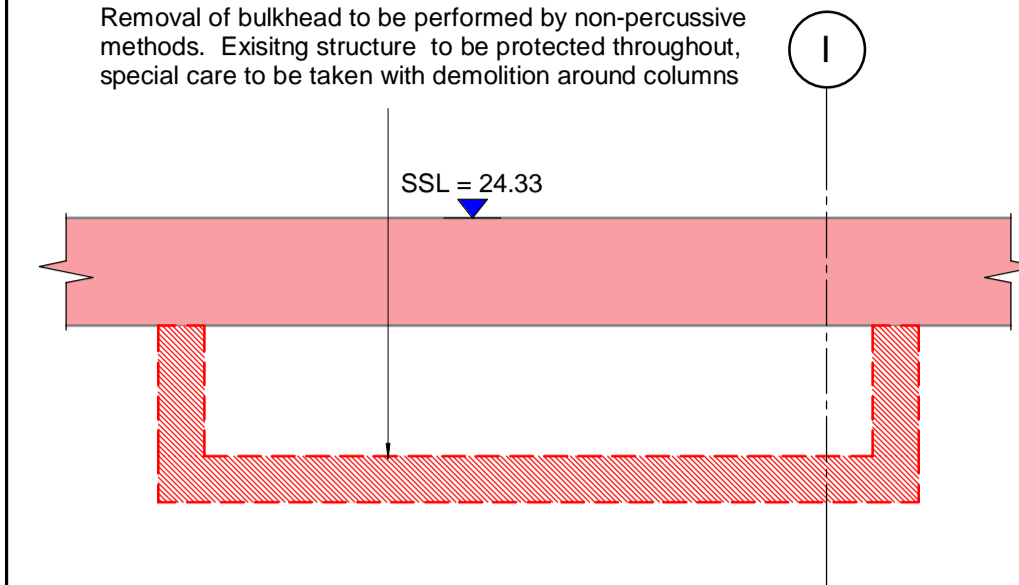
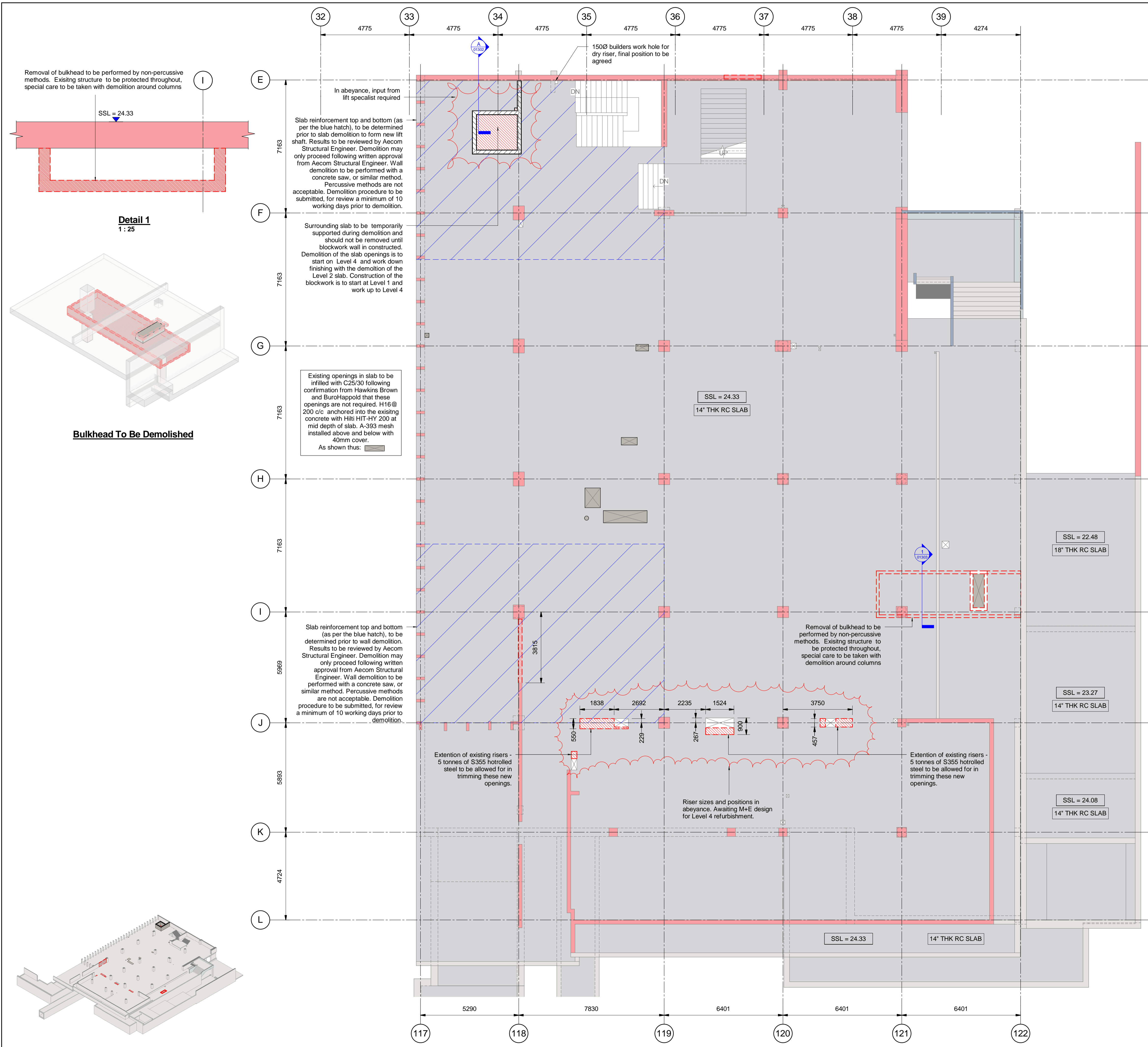
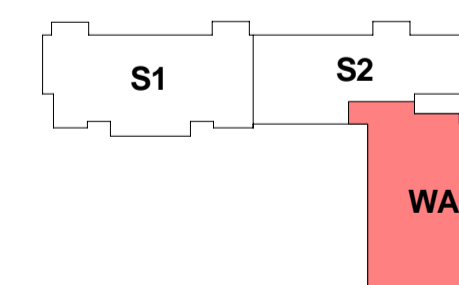
Section A
 1 : 100



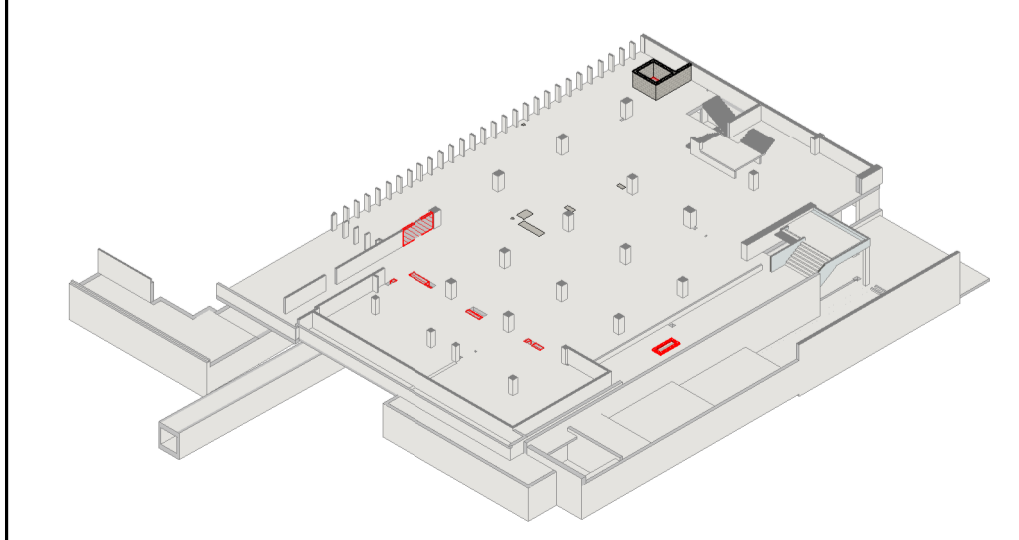
This drawing has been prepared for the use of AECOM's client. It may not be used, modified, reproduced or relied upon by third parties, except as agreed by AECOM or as required by law. AECOM accepts no responsibility, and denies any liability, whatsoever, to any party that uses or relies on this drawing without AECOM's express written consent. All measurements must be obtained from the stated dimensions.

- All existing structure shown on this drawing is based on partial record drawings. All details will need to be confirmed.
- Do not scale from this drawing. Work to figured dimensions only.
- This drawing is to be read in conjunction with:
 - General notes drawing 20BW-ACM-00-ZZ-DR-SE-00001
 - Design reports
 - Survey and Interpretative Reports
 - Project Specifications and Performance Specifications
 - Health and Safety Hazard Register
 - Relevant drawings and documentation issued by the architect, engineers and specialists.
 - Building Information Model (BIM)
 - Outline Construction Methodology
 - Movements and Tolerances Report
- All dimensions are in mm except levels which are in metres and relate to [ordance datum]. Existing slab thickness shown in inches as per record drawings.
- Any discrepancies shall be referred to the Designer before work commences.
- Existing services are to be identified prior to demolition works taking place and measures should be put in place to ensure that they are adequately protected throughout the course of the works. If it is not possible to adequately protect existing services during demolition then works must not be carried out and the desing team must be consulted.
- Listed building consent is required before any of these works take place.

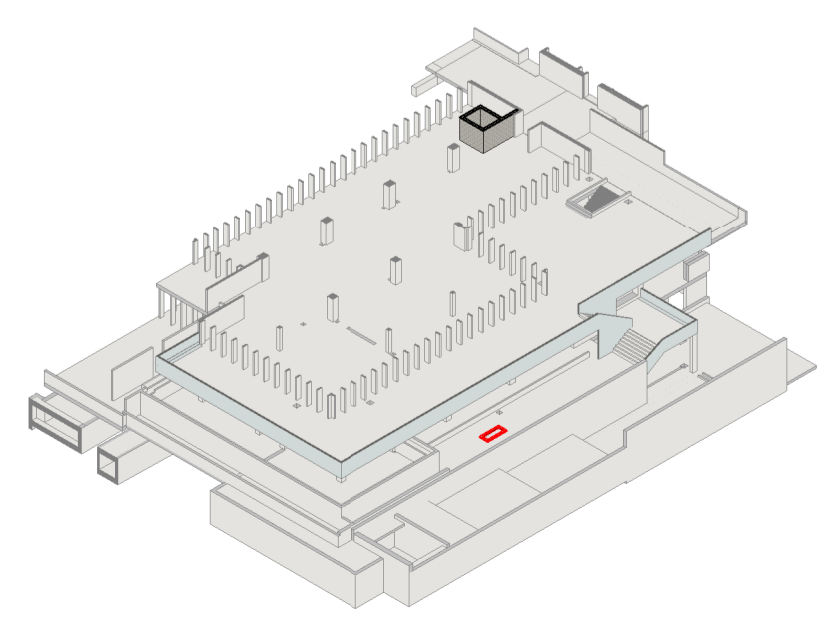
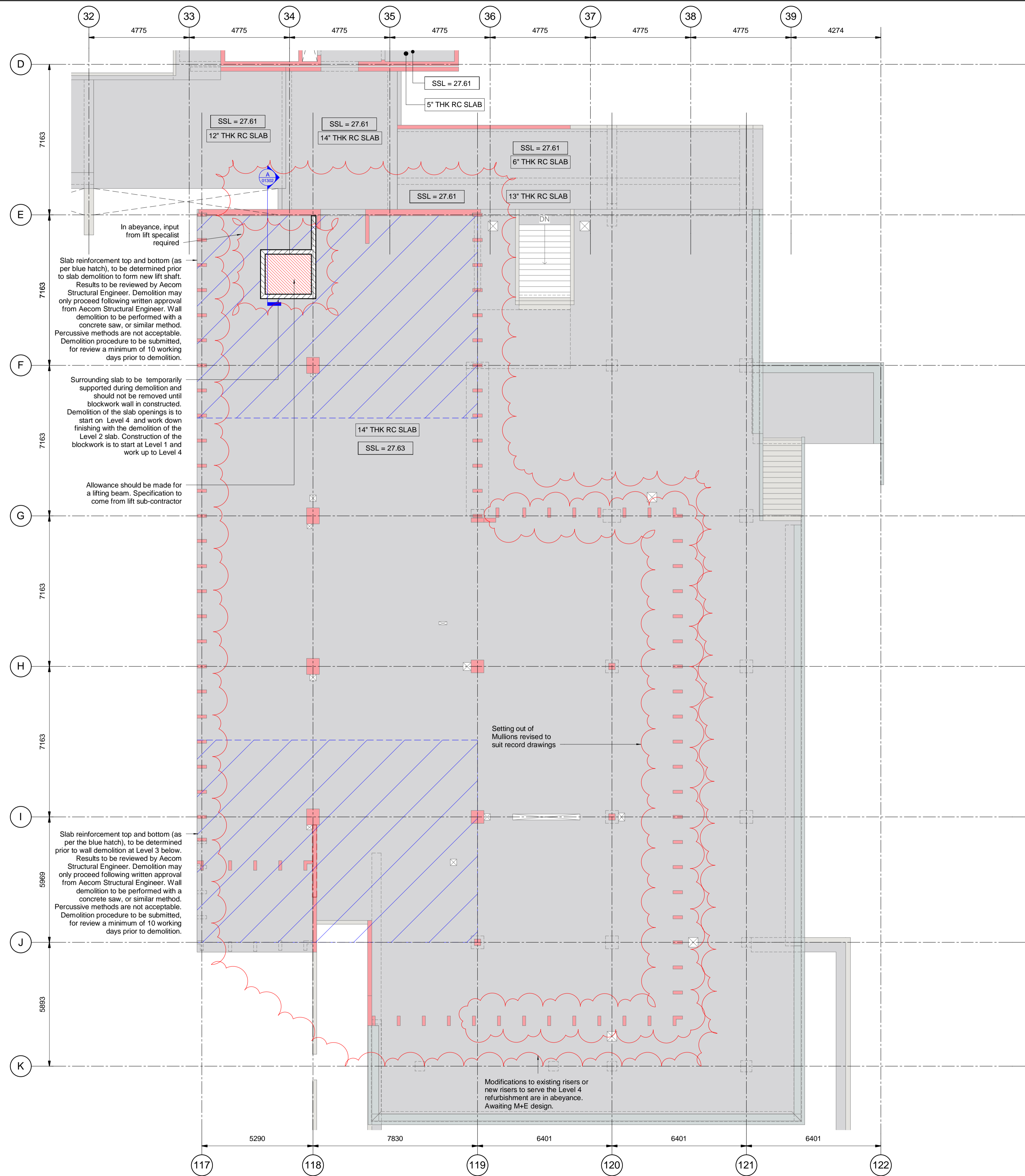
P1.2	01/08/17	Lift position revised
P1.1	20/04/17	Stage 3 Issue
P1.0	31/03/17	Stage 3 Issue
Rev.	Date	Description



Bulkhead To Be Demolished

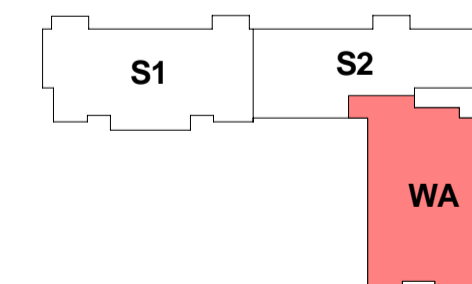


This drawing has been prepared for the use of AECOM's client. It may not be used, modified, reproduced or relied upon by third parties, except as agreed by AECOM or as required by law. AECOM accepts no responsibility, and denies any liability, whatsoever, to any party that uses or relies on this drawing without AECOM's express written consent. Do not scale this document. All measurements must be obtained from the stated dimensions.



- All existing structure shown on this drawing is based on partial record drawings. All details will need to be confirmed.
- Do not scale from this drawing. Work to figured dimensions only.
- This drawing is to be read in conjunction with:
 - General notes drawing 20BW-ACM-00-ZZ-DR-SE-00001
 - Design reports
 - Survey and Interpretative Reports
 - Project Specifications and Performance Specifications
 - Health and Safety Hazard Register
 - Relevant drawings and documentation issued by the architect, engineers and specialists.
 - Building Information Model (BIM)
 - Outline Construction Methodology
 - Movements and Tolerances Report
- All dimensions are in mm except levels which are in metres and relate to [ordance datum]. Existing slab thickness shown in inches as per record drawings.
- Any discrepancies shall be referred to the Designer before work commences.
- Existing services are to be identified prior to demolition works taking place and measures should be put in place to ensure that they are adequately protected throughout the course of the works. If it is not possible to adequately protect existing services during demolition then works must not be carried out and the desing team must be consulted.
- Listed building consent is required before any of these works take place.

Rev.	Date	Description
P1.2	01/08/17	Lift position revised
P1.1	20/04/17	Stage 3 Issue
P1.0	31/03/17	Stage 3 Issue



This drawing has been prepared for the use of AECOM's client. It may not be used, modified, reproduced or relied upon by third parties, except as agreed by AECOM or as required by law. AECOM accepts no responsibility, and denies any liability, whatsoever, to any party that uses or relies on this drawing without AECOM's express written consent. Do not scale this document. All measurements must be obtained from the stated dimensions.