

1 Public Health Services Water and Drainage Services - Level 2 Wing A

© Buro Happold Limited or its group companies. All rights reserved. Buro Happold and its group companies assert (unless otherwise agreed in writing) their rights under a 77 to 80 of the Copyright, Designs and Patents Act 1988.

DO NOT SCALE THIS DRAWING.

SAFETY HEALTH AND ENVIRONMENTAL INFORMATION

IN ADDITION TO THE HAZARDS/RISKS NORMALLY ASSOCIATED WITH THE TYPES OF WORK DETAILED ON THIS DRAWING, NOTE THE FOLLOWING:

- CONSTRUCTION**
1. WORKING AT HEIGHT
 2. LIFTING HEAVY EQUIPMENT
 3. WORKING ADJACENT TO POTENTIALLY LIVE SERVICES
 4. HANDLING CHEMICAL PRODUCTS
 5. WORKING IN CONFINED SPACES
 6. PRESENCE OF ASBESTOS

- MAINTENANCE/LEANING/OPERATION**
1. HANDLING CHEMICAL PRODUCTS
 2. WORKING AT HEIGHT
 3. WORKING ADJACENT TO POTENTIALLY LIVE SERVICES

- DECOMMISSIONING/DEMOLITION**
1. PRESENCE OF LIVE SERVICES
 2. PRESENCE OF ASBESTOS
 3. WORKING AT HEIGHT
 4. LIFTING HEAVY EQUIPMENT
 5. PRESENCE OF FLOOR OPENINGS
 6. ALWAYS SAFELY ISOLATE BEFORE COMMENCING ANY WORKS

Notes

STANDARD NOTES

1. THIS DRAWING IS TO BE READ IN CONJUNCTION WITH ALL OTHER DISCIPLINES, DRAWINGS, SCHEDULES AND SPECIFICATIONS, LEGENDS AND STANDARD DETAILS.
2. THIS DRAWING IS COPYRIGHT AND SHALL NOT BE REPRODUCED WITHOUT PERMISSION.
3. DIMENSIONS GOVERN ON ALL DRAWINGS AND DETAILS. SHOULD ANY DISCREPANCIES BE FOUND WITH THIS DRAWING AND ANY ASSOCIATED DRAWINGS OR SPECIFICATIONS THIS SHOULD BE BROUGHT TO THE ATTENTION OF THE M&E BUILDING SERVICES CONSULTANT IMMEDIATELY.
4. UNLESS OTHERWISE STATED ALL DIMENSIONS ARE IN MILLIMETRES.
5. DO NOT SCALE FROM THIS DRAWING.
6. DIMENSIONS TO BE CHECKED ON SITE BEFORE ANY WORK IS PUT IN HAND OR PREFABRICATED.
7. THIS DRAWING SHOULD ONLY BE USED FOR THE SPECIFIC SERVICES INTENDED.
8. THIS DRAWING SHOWS THE DESIGN INTENT ONLY. THE CONTRACTOR SHALL BE RESPONSIBLE FOR THE FULL CO-ORDINATION OF THE SERVICES INDICATED ON THIS AND ALL OTHER SERVICES DRAWINGS.
9. FINAL ACCESS AND SETTING OUT OF SERVICES SHALL BE AGREED BETWEEN THE ARCHITECT AND THE CONTRACTOR. THE PROJECT NOTES ARE TO BE READ IN CONJUNCTION WITH ALL RELEVANT TECHNICAL SPECIFICATIONS.
11. WHERE PUBLIC HEALTH SERVICES PASS THROUGH FIRE COMPARTMENTATION CEILING VOIDS, FLOOR VOIDS AND STRUCTURAL WALLS THE CONTRACTOR SHALL SLEEVE/SEAL THE OPENING WITH AN ACOUSTIC AND FIRE SEALANT APPROVED BY THE ARCHITECT.
12. THE CONTRACTOR SHALL REFER TO THE ARCHITECT'S DRAWINGS FOR DETAILS OF FIRE COMPARTMENTATION.
13. STEEL/STAINLESS STEEL AND IRON PIPEWORK ARE DENOTED BY THEIR INTERNAL BORE SIZE.
14. COPPER AND PLASTIC PIPEWORK ARE DENOTED BY THEIR EXTERNAL DIAMETER.
15. DRAWING HAS BEEN PRODUCED FROM INCOMPLETE RECORD INFORMATION AND VISUAL SITE SURVEYS. CONTRACTOR IS RESPONSIBLE FOR VALIDATING ACCURACY PRIOR TO WORKS.
16. CONTRACTOR TO PROVIDE SCHEDULE OF PROPOSED SERVICES ISOLATIONS PRIOR TO WORK COMMENCING.
17. DRAWINGS ARE INDICATIVE ONLY AND ARE SHOWN FOR THE DESIGN INTENT AND THE DESIGN & BUILD CONTRACTOR'S PRICING PURPOSE. THE CONTRACTOR SHALL VERIFY ALL ASPECTS OF THE DESIGN DURING HIS DESIGN PHASE.

P02	TENDER	10/08/2017	LH
P01	TENDER	11/04/2017	LH
Rev	Description	Date	Approved

TENDER

Statutory/Validity of Drawing

BUROHAPPOLD
ENGINEERING

17 Newman Street
London
W1T 1PD
UK

Tel: +44 (0)2079 279 700
Fax: +44 (0)207 874 145
Email: 035833@burohappold.com
Web: www.burohappold.com

Architect: *HawkinsBrown*
Project: **UCL Institute of Education**
Dwg Title: **Public Health Services
Services Water and Drainage Services
Level 2 Wing A**

Job No: **035833** Scale@A1: **1 : 100**

Drawing No: **20BW-BHE-WA-02-DR-P-XX-8000** Revision: **P02**

SAFETY HEALTH AND ENVIRONMENTAL INFORMATION

IN ADDITION TO THE HAZARDS/RISKS NORMALLY ASSOCIATED WITH THE TYPES OF WORK DETAILED ON THIS DRAWING, NOTE THE FOLLOWING:

- CONSTRUCTION**
1. WORKING AT HEIGHT
 2. LIFTING HEAVY EQUIPMENT
 3. WORKING ADJACENT TO POTENTIALLY LIVE SERVICES
 4. HANDLING CHEMICAL PRODUCTS
 5. WORKING IN CONFINED SPACES
 6. PRESENCE OF ASBESTOS

- MAINTENANCE/LEANING/OPERATION**
1. WORKING AT HEIGHT
 2. WORKING ADJACENT TO POTENTIALLY LIVE SERVICES

- DECOMMISSIONING/DEMOLITION**
1. PRESENCE OF LIVE SERVICES
 2. PRESENCE OF ASBESTOS
 3. WORKING AT HEIGHT
 4. LIFTING HEAVY EQUIPMENT
 5. PRESENCE OF FLOOR OPENINGS
 6. ALWAYS SAFELY ISOLATE BEFORE COMMENCING ANY WORKS

Notes

STANDARD NOTES

1. THIS DRAWING IS TO BE READ IN CONJUNCTION WITH ALL OTHER DISCIPLINES, DRAWINGS, SCHEDULES AND SPECIFICATIONS, LEGENDS AND STANDARD DETAILS.
2. THIS DRAWING IS COPYRIGHT AND SHALL NOT BE REPRODUCED WITHOUT PERMISSION.
3. DIMENSIONS GOVERN ON ALL DRAWINGS AND DETAILS. SHOULD ANY DISCREPANCIES BE FOUND WITH THIS DRAWING AND ANY ASSOCIATED DRAWINGS OR SPECIFICATIONS THIS SHOULD BE BROUGHT TO THE ATTENTION OF THE M&E BUILDING SERVICES CONSULTANT IMMEDIATELY.
4. UNLESS OTHERWISE STATED ALL DIMENSIONS ARE IN MILLIMETRES.
5. DO NOT SCALE FROM THIS DRAWING.
6. DIMENSIONS TO BE CHECKED ON SITE BEFORE ANY WORK IS PUT IN HAND OR PREFABRICATED.
7. THIS DRAWING SHOULD ONLY BE USED FOR THE SPECIFIC SERVICES INTENDED.
8. THIS DRAWING SHOWS THE DESIGN INTENT ONLY. THE CONTRACTOR SHALL BE RESPONSIBLE FOR THE FULL CO-ORDINATION OF THE SERVICES INDICATED ON THIS AND ALL OTHER SERVICES DRAWINGS.
9. FINAL ACCESS AND SETTING OUT OF SERVICES SHALL BE AGREED BETWEEN THE ARCHITECT AND THE CONTRACTOR. THE PROJECT NOTES ARE TO BE READ IN CONJUNCTION WITH ALL RELEVANT TECHNICAL SPECIFICATIONS.
10. WHERE PUBLIC HEALTH SERVICES PASS THROUGH FIRE COMPARTMENTATION CEILING VOIDS, FLOOR VOIDS AND STRUCTURAL WALLS THE CONTRACTOR SHALL SLEEVE/SEAL THE OPENING WITH AN ACOUSTIC AND FIRE SEALANT APPROVED BY THE ARCHITECT.
11. THE CONTRACTOR SHALL REFER TO THE ARCHITECT'S DRAWINGS FOR DETAILS OF FIRE COMPARTMENTATION.
12. STEEL/STAINLESS STEEL AND IRON PIPEWORK ARE DENOTED BY THEIR INTERNAL BORE SIZE.
13. COPPER AND PLASTIC PIPEWORK ARE DENOTED BY THEIR EXTERNAL DIAMETER.
14. DRAWING HAS BEEN PRODUCED FROM INCOMPLETE RECORD INFORMATION AND VISUAL SITE SURVEYS. CONTRACTOR IS RESPONSIBLE FOR VALIDATING ACCURACY PRIOR TO WORKS.
15. CONTRACTOR TO PROVIDE SCHEDULE OF PROPOSED SERVICES ISOLATIONS PRIOR TO WORK COMMENCING.
16. DRAWINGS ARE INDICATIVE ONLY AND ARE SHOWN FOR THE DESIGN INTENT AND THE DESIGN & BUILD CONTRACTOR'S PRICING PURPOSE. THE CONTRACTOR SHALL VERIFY ALL ASPECTS OF THE DESIGN DURING HIS DESIGN PHASE.

P02	TENDER	08/08/2017	LH
P01	TENDER	11/04/2017	LH
Rev	Description	Date	Approved

TENDER

Status/Suitability of Drawing

**BUROHAPPOLD
ENGINEERING**

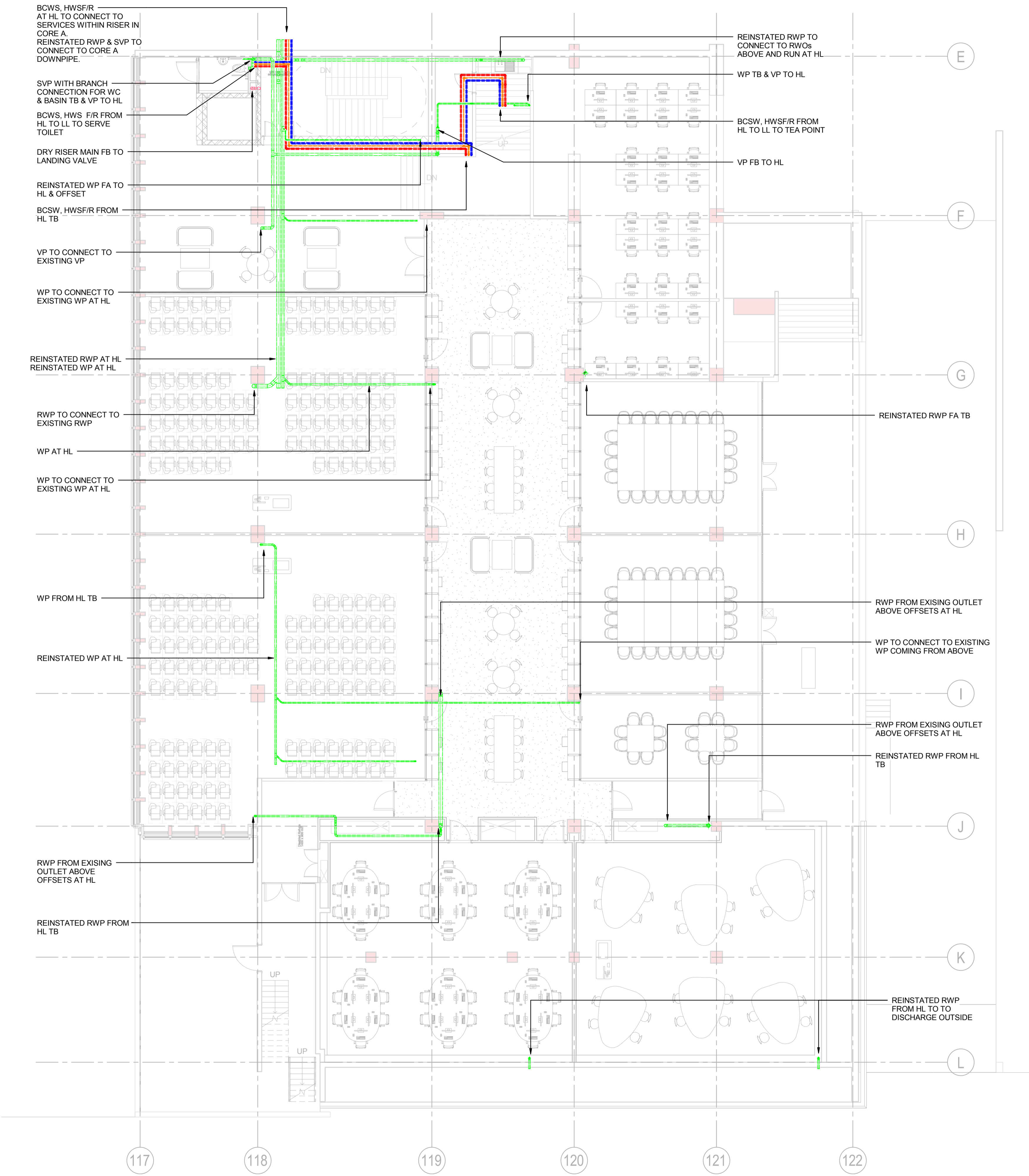
17 Newman Street
 London
 W1T 1PD
 UK

Tel: +44 (0)2079 279 700
 Fax: +44 (0)207 874 145
 Email: 035833@burohappold.com
 Web: www.burohappold.com

Architect: *HawkinsBrown*
 Project: **UCL Institute of Education**
 Dwg Title: **Public Health Services
 Services Water and Drainage Services
 Level 3 Wing A**

Job No: **035833**
 Scale@A1: **1 : 100**

Drawing No: **20BW-BHE-WA-03-DR-P-XX-8000**
 Revision: **P02**



1 Public Health Services Water and Drainage Services - Level 3 Wing A

SAFETY HEALTH AND ENVIRONMENTAL INFORMATION

IN ADDITION TO THE HAZARDS/RISKS NORMALLY ASSOCIATED WITH THE TYPES OF WORK DETAILED ON THIS DRAWING, NOTE THE FOLLOWING:

- CONSTRUCTION**
1. WORKING AT HEIGHT
 2. LIFTING HEAVY EQUIPMENT
 3. WORKING ADJACENT TO POTENTIALLY LIVE SERVICES
 4. HANDLING CHEMICAL PRODUCTS
 5. WORKING IN CONFINED SPACES
 6. PRESENCE OF ASBESTOS

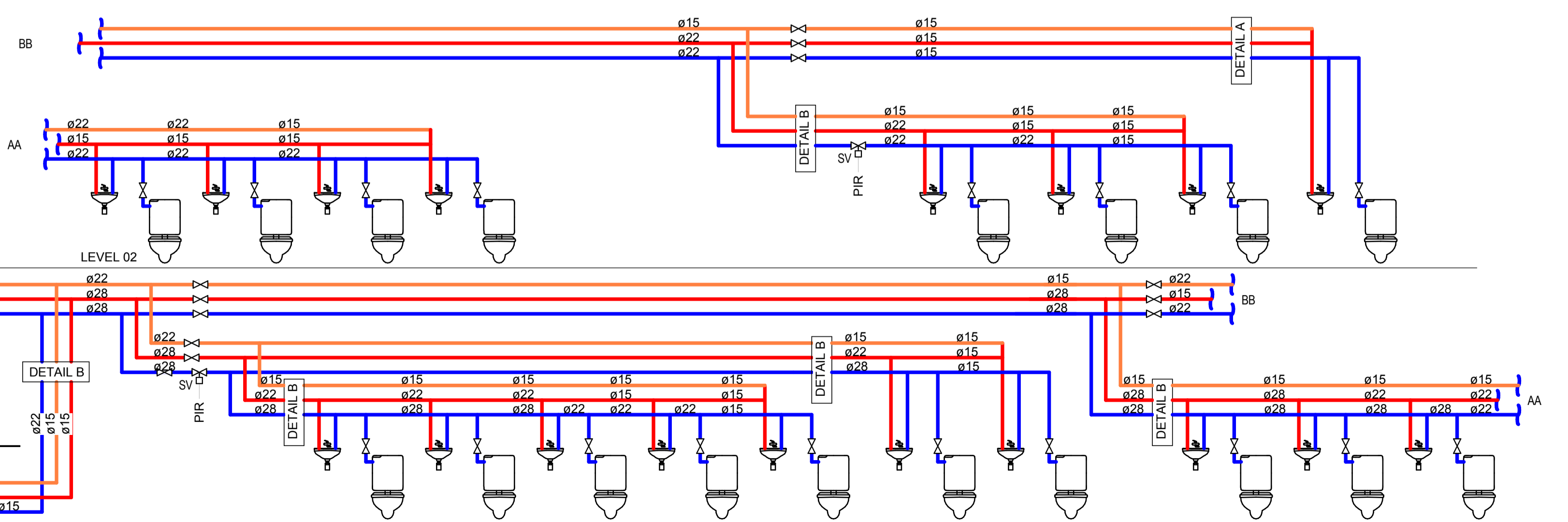
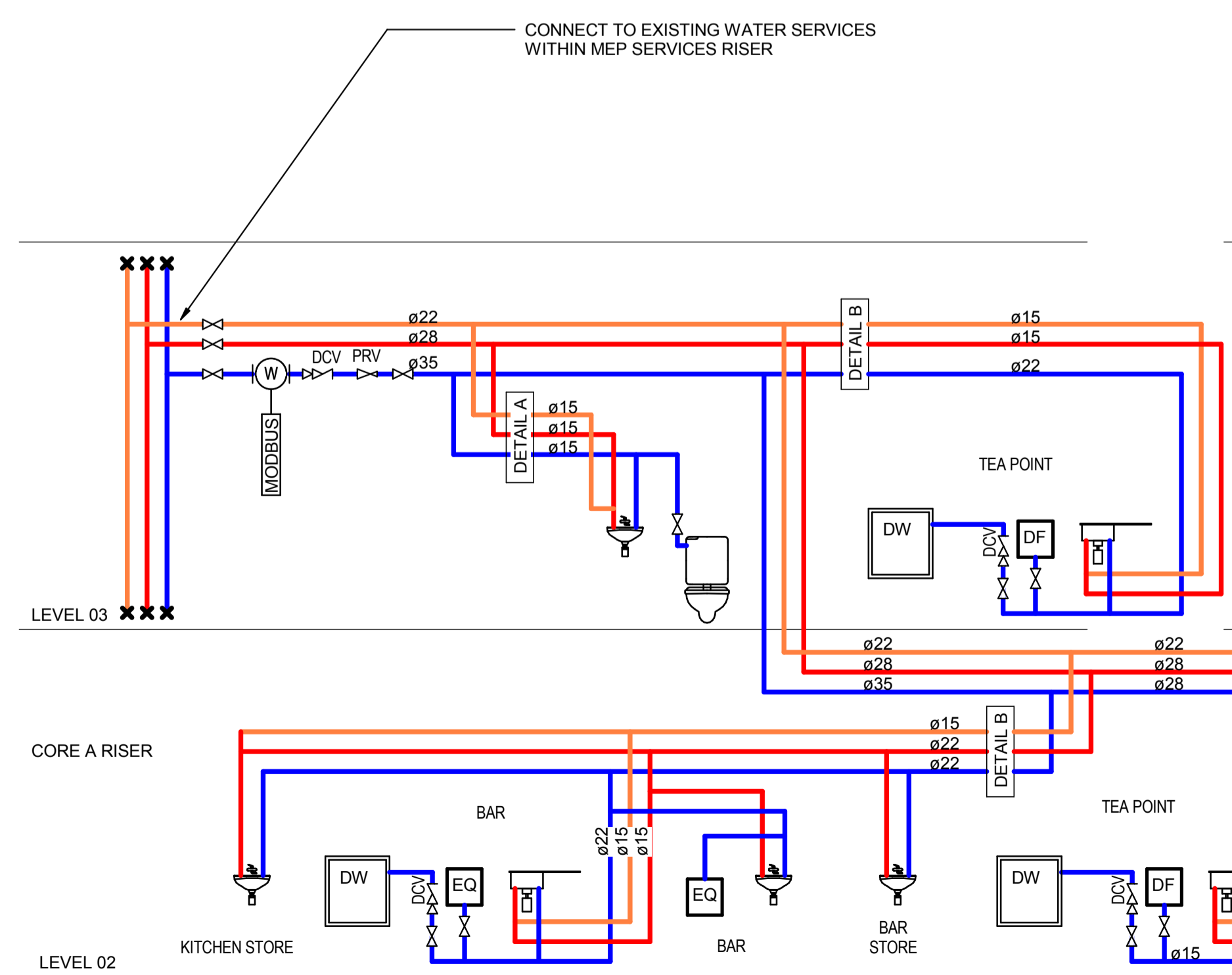
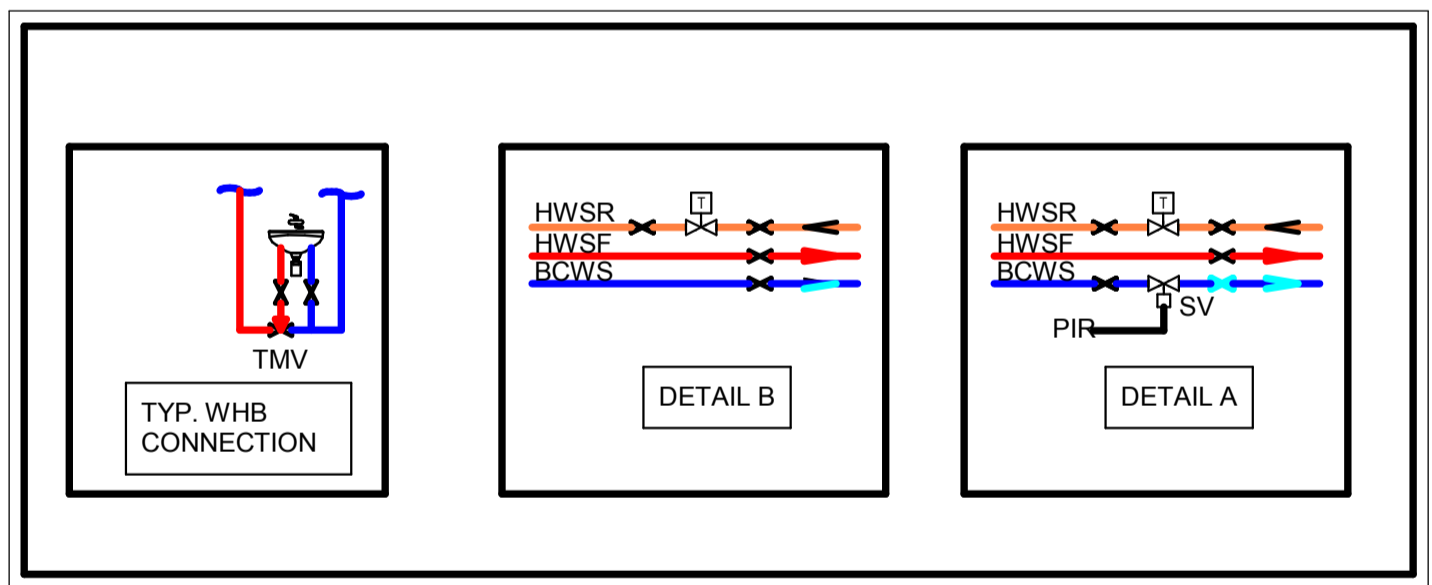
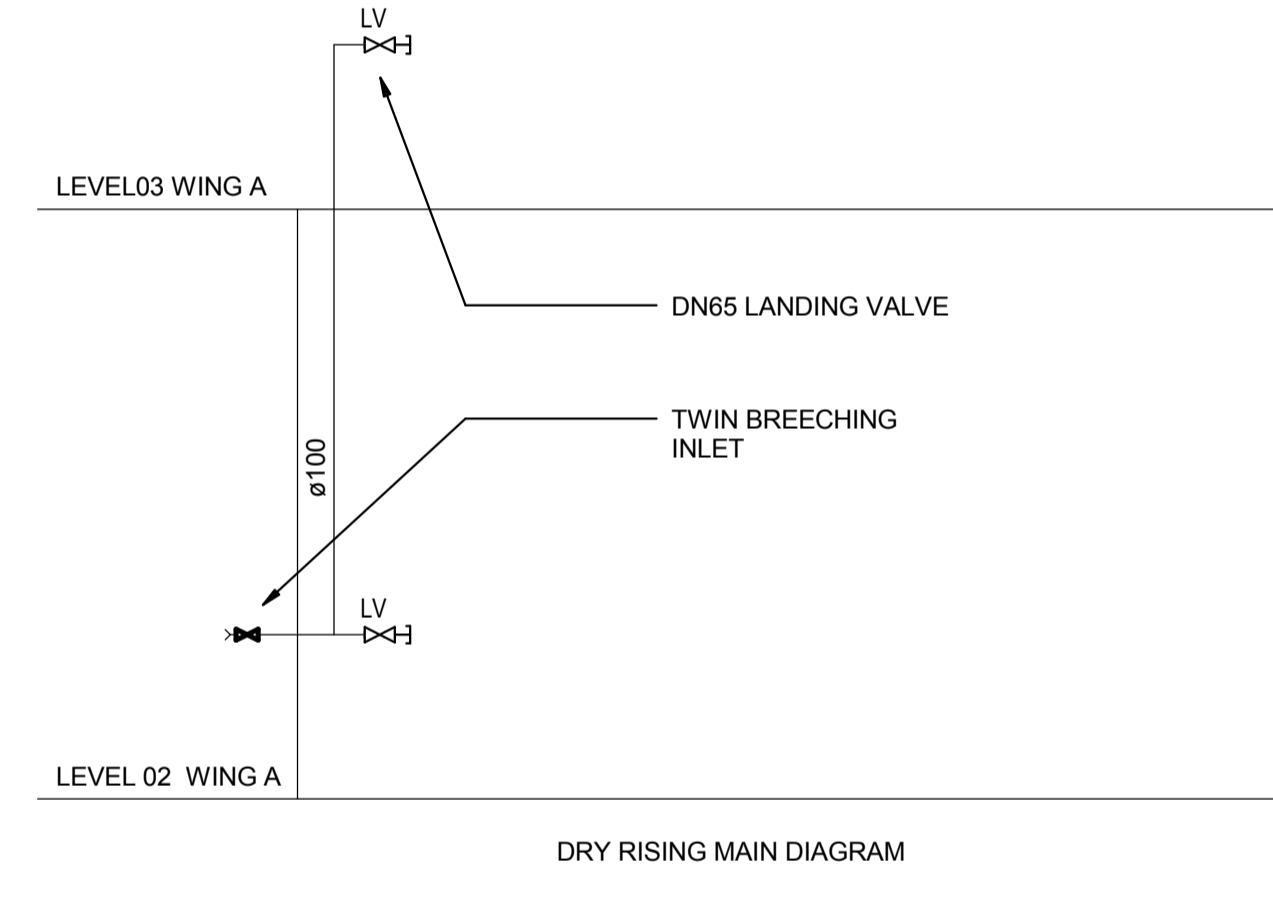
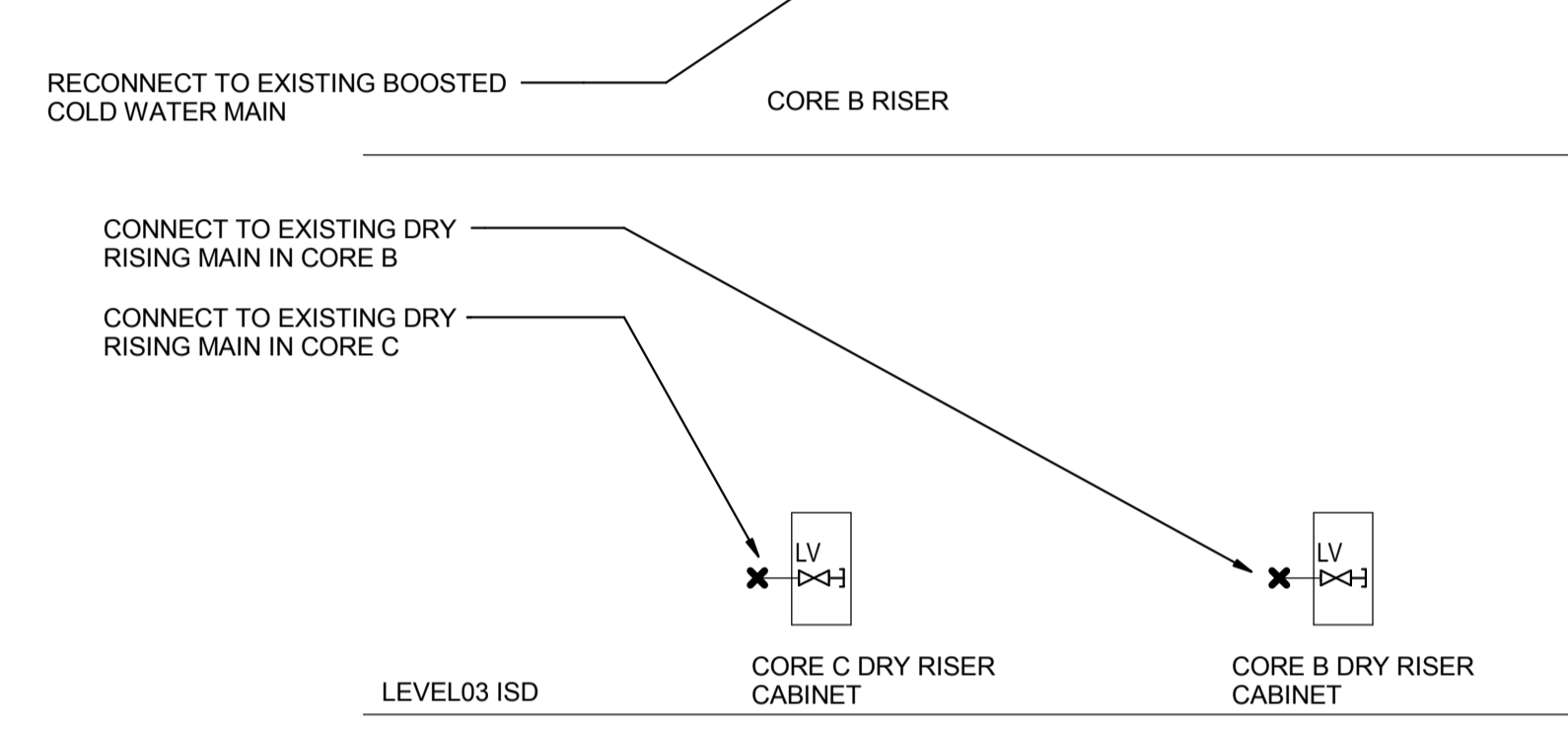
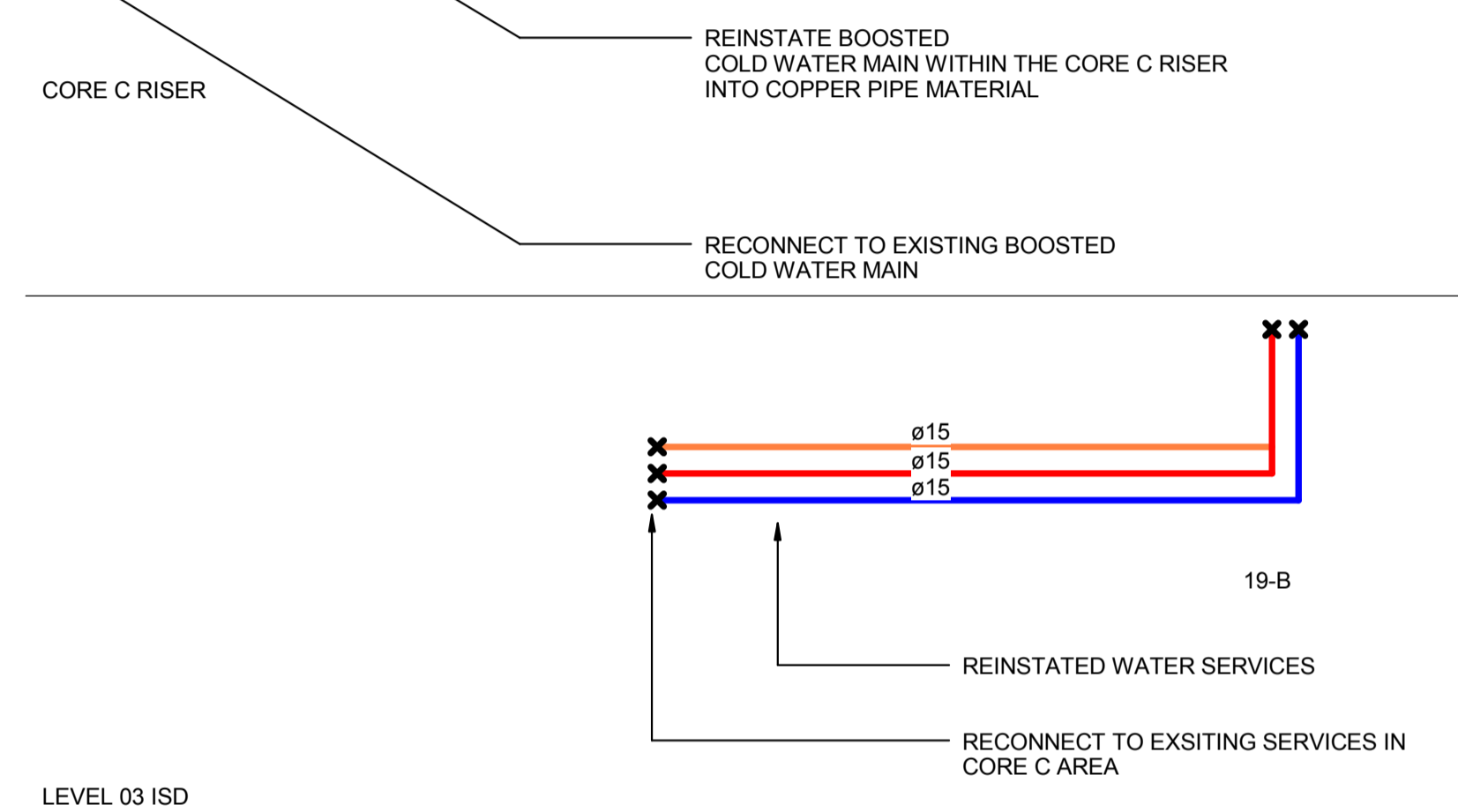
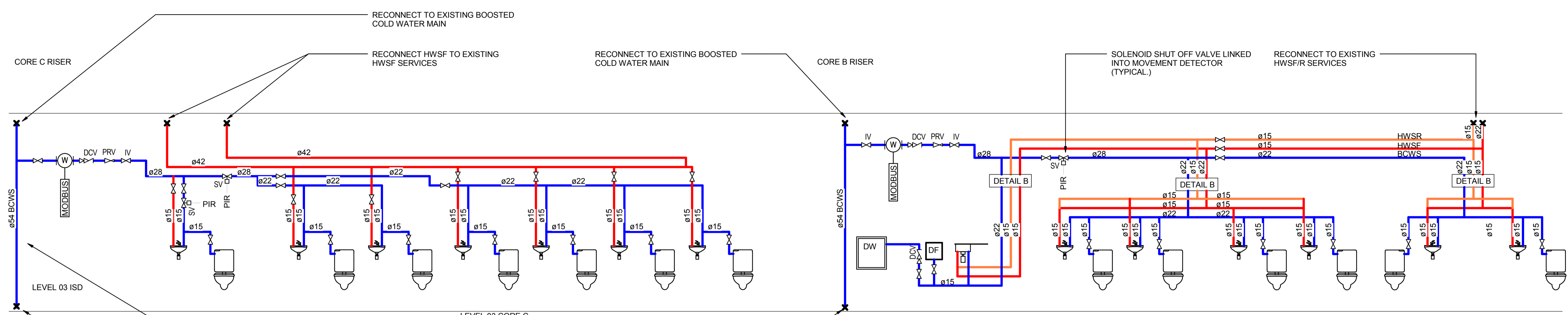
- MAINTENANCE/CLEANING/OPERATION**
1. HANDLING CHEMICAL PRODUCTS
 2. WORKING AT HEIGHT
 3. WORKING ADJACENT TO POTENTIALLY LIVE SERVICES

- DECOMMISSIONING/DEMOLITION**
1. PRESENCE OF LIVE SERVICES
 2. PRESENCE OF ASBESTOS
 3. WORKING AT HEIGHT
 4. LIFTING HEAVY EQUIPMENT
 5. PRESENCE OF FLOOR OPENINGS
 6. ALWAYS SAFELY ISOLATE BEFORE COMMENCING ANY WORKS

Notes

SCHEMATIC NOTES

1. THIS DRAWING IS TO BE READ IN CONJUNCTION WITH ALL OTHER DISCIPLINES, DRAWINGS, SCHEDULES AND SPECIFICATIONS, LEGENDS AND STANDARD DETAILS.
2. THIS DRAWING IS COPYRIGHT AND SHALL NOT BE REPRODUCED WITHOUT PERMISSION.
3. DIMENSIONS GOVERN ON ALL DRAWINGS AND DETAILS. SHOULD ANY DISCREPANCIES BE FOUND WITH THIS DRAWING AND ANY ASSOCIATED DRAWINGS OR SPECIFICATIONS THIS SHOULD BE BROUGHT TO THE ATTENTION OF THE M&E BUILDING SERVICES CONSULTANT IMMEDIATELY.
4. UNLESS OTHERWISE STATED ALL DIMENSIONS ARE IN MILLIMETRES.
5. DO NOT SCALE FROM THIS DRAWING.
6. DIMENSIONS TO BE CHECKED ON SITE BEFORE ANY WORK IS PUT IN HAND OR PREFABRICATED.
7. THIS DRAWING SHOULD ONLY BE USED FOR THE SPECIFIC SERVICES INTENDED.
8. THIS DRAWING SHOWS THE DESIGN INTENT ONLY. THE CONTRACTOR SHALL BE RESPONSIBLE FOR THE FULL CO-ORDINATION OF THE SERVICES INDICATED ON THIS AND ALL OTHER SERVICES DRAWINGS.
9. FINAL ACCESS AND SETTING OUT OF SERVICES SHALL BE AGREED BETWEEN THE ARCHITECT AND THE CONTRACTOR.
10. THE PROJECT NOTES ARE TO BE READ IN CONJUNCTION WITH ALL RELEVANT TECHNICAL SPECIFICATIONS.
11. WHERE ELECTRICAL SERVICES PASS THROUGH FIRE COMPARTMENTATION CEILING VOIDS, FLOOR VOIDS AND STRUCTURAL WALLS THE CONTRACTOR SHALL SLEEVE/SEAL THE OPENING WITH AN ACOUSTIC AND FIRE SEALANT APPROVED BY THE ARCHITECT.
12. THE CONTRACTOR SHALL REFER TO THE ARCHITECT'S DRAWINGS FOR DETAILS OF FIRE COMPARTMENTATION.
13. DRAWING HAS BEEN PRODUCED FROM INCOMPLETE RECORD INFORMATION AND VISUAL SITE SURVEYS. CONTRACTOR IS RESPONSIBLE FOR VALIDATING ACCURACY PRIOR TO WORKS.
14. CONTRACTOR TO PROVIDE SCHEDULE OF PROPOSED SERVICES ISOLATIONS PRIOR TO WORK COMMENCING.
15. DRAWINGS ARE INDICATIVE ONLY AND ARE SHOWN FOR THE PRICING PURPOSE. THE CONTRACTOR SHALL VERIFY ALL ASPECTS OF THE DESIGN DURING HIS DESIGN PHASE.



P02 TENDER	08/08/2017	LH
P01 TENDER	11/04/2017	LH
Rev Description	Date	Approved

TENDER

Status/Stability of Drawing

BUROHAPPOLD ENGINEERING

17 Newman Street London W1T 1PD UK
 Tel: +44 (0)2079 279 700 Fax: +44 (0)207 874 145 Email: 03583@burohappold.com Web: www.burohappold.com

Architect: HawkinsBrown
 Project: UCL Institute of Education
 Drg Title: Public Health Services Water Services Schematic

Job No:	Scale@A1
035833	1 : 1
Drawing No:	Revision
20BW-BHE-WA-XX-SC-P-XX-7000	P02

DO NOT SCALE THIS DRAWING.

SAFETY HEALTH AND ENVIRONMENTAL INFORMATION

IN ADDITION TO THE HAZARDS/RISKS NORMALLY ASSOCIATED WITH THE TYPES OF WORK DETAILED ON THIS DRAWING, NOTE THE FOLLOWING:

- CONSTRUCTION**
1. WORKING AT HEIGHT
 2. LIFTING HEAVY EQUIPMENT
 3. WORKING ADJACENT TO POTENTIALLY LIVE SERVICES
 4. HANDLING CHEMICAL PRODUCTS
 5. WORKING IN CONFINED SPACES
 6. PRESENCE OF ASBESTOS

- MAINTENANCE/LEANING/OPERATION**
1. HANDLING CHEMICAL PRODUCTS
 2. WORKING AT HEIGHT
 3. WORKING ADJACENT TO POTENTIALLY LIVE SERVICES

DECOMMISSIONING/DEMOLITION

1. PRESENCE OF LIVE SERVICES
2. PRESENCE OF ASBESTOS
3. WORKING AT HEIGHT
4. LIFTING HEAVY EQUIPMENT
5. PRESENCE OF FLOOR OPENINGS
6. ALWAYS SAFELY ISOLATE BEFORE COMMENCING ANY WORKS

Notes

SCHEMATIC NOTES

1. THIS DRAWING IS TO BE READ IN CONJUNCTION WITH ALL OTHER DISCIPLINES, DRAWINGS, SCHEDULES AND SPECIFICATIONS, LEGENDS AND STANDARD DETAILS.
2. THIS DRAWING IS COPYRIGHT AND SHALL NOT BE REPRODUCED WITHOUT PERMISSION.
3. DIMENSIONS GOVERN ON ALL DRAWINGS AND DETAILS. SHOULD ANY DISCREPANCIES BE FOUND WITH THIS DRAWING AND ANY ASSOCIATED DRAWINGS OR SPECIFICATIONS THIS SHOULD BE BROUGHT TO THE ATTENTION OF THE M&E BUILDING SERVICES CONSULTANT IMMEDIATELY.
4. UNLESS OTHERWISE STATED ALL DIMENSIONS ARE IN MILLIMETRES.
5. DO NOT SCALE FROM THIS DRAWING.
6. DIMENSIONS TO BE CHECKED ON SITE BEFORE ANY WORK IS PUT IN HAND OR PREFABRICATED.
7. THIS DRAWING SHOULD ONLY BE USED FOR THE SPECIFIC SERVICES INTENDED.
8. THIS DRAWING SHOWS THE DESIGN INTENT ONLY. THE CONTRACTOR SHALL BE RESPONSIBLE FOR THE FULL CO-ORDINATION OF THE SERVICES INDICATED ON THIS AND ALL OTHER SERVICES DRAWINGS.
9. FINAL ACCESS AND SETTING OUT OF SERVICES SHALL BE AGREED BETWEEN THE ARCHITECT AND THE CONTRACTOR. THE PROJECT NOTES ARE TO BE READ IN CONJUNCTION WITH ALL RELEVANT TECHNICAL SPECIFICATIONS.
10. WHERE ELECTRICAL SERVICES PASS THROUGH FIRE COMPARTMENTATION CEILING VOIDS, FLOOR VOIDS AND STRUCTURAL WALLS THE CONTRACTOR SHALL SLEEVE/SEAL THE OPENING WITH AN ACOUSTIC AND FIRE SEALANT APPROVED BY THE ARCHITECT.
11. THE CONTRACTOR SHALL REFER TO THE ARCHITECT'S DRAWINGS FOR DETAILS OF FIRE COMPARTMENTATION.
12. DRAWING HAS BEEN PRODUCED FROM INCOMPLETE RECORD INFORMATION AND VISUAL SITE SURVEYS. CONTRACTOR IS RESPONSIBLE FOR VALIDATING ACCURACY PRIOR TO WORKS.
13. CONTRACTOR TO PROVIDE SCHEDULE OF PROPOSED SERVICES ISOLATIONS PRIOR TO WORK COMMENCING.
14. DRAWINGS ARE INDICATIVE ONLY AND ARE SHOWN FOR THE PRICING PURPOSE. THE CONTRACTOR SHALL VERIFY ALL ASPECTS OF THE DESIGN DURING HIS DESIGN PHASE.

P02	TENDER	08/08/2017	LH
P01	TENDER	11/04/2017	LH
Rev	Description	Date	Approved

TENDER

Status/Stability of Drawing

BUROHAPPOLD ENGINEERING

17 Newman Street
 London W1T 1PD
 UK

Tel: +44 (0)2079 279 700
 Fax: +44 (0)207 874 145
 Email: 035833@burohappold.com
 Web: www.burohappold.com

Architect: *HawkinsBrown*
 Project: **UCL Institute of Education**
 Dwg Title: **Public Health Services Drainage Services Schematic**

Job No. 035833	Scale@A1 1 : 1
Drawing No. 20BW-BHE-WA-XX-SC-P-XX-7001	Revision P02

