

**SAFETY HEALTH AND ENVIRONMENTAL INFORMATION**

IN ADDITION TO THE HAZARDS/RISKS NORMALLY ASSOCIATED WITH THE TYPES OF WORK DETAILED ON THIS DRAWING, NOTE THE FOLLOWING:

- CONSTRUCTION**
1. WORKING AT HEIGHT
  2. LIFTING HEAVY EQUIPMENT
  3. WORKING ADJACENT TO POTENTIALLY LIVE SERVICES
  4. HANDLING CHEMICAL PRODUCTS
  5. WORKING IN CONFINED SPACES
  6. PRESENCE OF ASBESTOS

- MAINTENANCE/CLEANING/OPERATION**
1. HANDLING CHEMICAL PRODUCTS
  2. WORKING AT HEIGHT
  3. WORKING ADJACENT TO POTENTIALLY LIVE SERVICES

- DECOMMISSIONING/DEMOLITION**
1. PRESENCE OF LIVE SERVICES
  2. PRESENCE OF ASBESTOS
  3. WORKING AT HEIGHT
  4. LIFTING HEAVY EQUIPMENT
  5. PRESENCE OF FLOOR OPENINGS
  6. ALWAYS SAFELY ISOLATE BEFORE COMMENCING ANY WORKS

**Notes**

**LIGHTING NOTES**

1. THIS DRAWING IS TO BE READ IN CONJUNCTION WITH ALL OTHER DISCIPLINES, DRAWINGS, SCHEDULES AND SPECIFICATIONS, LEGENDS AND STANDARD DETAILS.
2. THIS DRAWING IS COPYRIGHT AND SHALL NOT BE REPRODUCED WITHOUT PERMISSION.
3. DIMENSIONS GOVERN ON ALL DRAWINGS AND DETAILS. SHOULD ANY DISCREPANCIES BE FOUND WITH THIS DRAWING AND ANY ASSOCIATED DRAWINGS OR SPECIFICATIONS THIS SHOULD BE BROUGHT TO THE ATTENTION OF THE M&E BUILDING SERVICES CONSULTANT IMMEDIATELY.
4. UNLESS OTHERWISE STATED ALL DIMENSIONS ARE IN MILLIMETRES.
5. DO NOT SCALE FROM THIS DRAWING.
6. DIMENSIONS TO BE CHECKED ON SITE BEFORE ANY WORK IS PUT IN HAND OR PREFABRICATED.
7. THIS DRAWING SHOULD ONLY BE USED FOR THE SPECIFIC SERVICES INTENDED.
8. THIS DRAWING SHOWS THE DESIGN INTENT ONLY. THE CONTRACTOR SHALL BE RESPONSIBLE FOR THE FULL CO-ORDINATION OF THE SERVICES INDICATED ON THIS AND ALL OTHER SERVICES DRAWINGS.
9. FINAL ACCESS AND SETTING OUT OF SERVICES SHALL BE AGREED BETWEEN THE ARCHITECT AND THE CONTRACTOR.
10. THE PROJECT NOTES ARE TO BE READ IN CONJUNCTION WITH ALL RELEVANT TECHNICAL SPECIFICATIONS.
11. WHERE ELECTRICAL SERVICES PASS THROUGH FIRE COMPARTMENTATION CEILING VOIDS, FLOOR VOIDS AND STRUCTURAL WALLS THE CONTRACTOR SHALL SLEEVE/SEAL THE OPENING WITH AN ACOUSTIC AND FIRE SEALANT APPROVED BY THE ARCHITECT.
12. THE CONTRACTOR SHALL REFER TO THE ARCHITECT'S DRAWINGS FOR DETAILS OF FIRE COMPARTIMENTATION.
13. FOR THE SPECIFICATION OF ALL LUMINAIRES PLEASE REFER TO THE LUMINAIRE SCHEDULE.
14. THE CONTRACTOR SHALL REFER TO THE ARCHITECT'S REFLECTED CEILING PLANS AND ROOM ELEVATIONS FOR THE EXACT LOCATION OF ALL SERVICES.
15. DRAWING HAS BEEN PRODUCED FROM INCOMPLETE RECORD INFORMATION AND VISUAL SITE SURVEYS. CONTRACTOR IS RESPONSIBLE FOR VALIDATING ACCURACY PRIOR TO WORKS.
16. CONTRACTOR TO PROVIDE SCHEDULE OF PROPOSED SERVICES ISOLATIONS PRIOR TO WORK COMMENCING.
17. DRAWINGS ARE INDICATIVE ONLY AND ARE SHOWN FOR THE DESIGN INTENT AND THE DESIGN & BUILD CONTRACTOR'S PRICING PURPOSE. THE CONTRACTOR SHALL VERIFY ALL ASPECTS OF THE DESIGN DURING HIS DESIGN PHASE.

P02 - TENDER	08/08/2017	LH
P01 - TENDER	11/04/2017	LH
Rev Description	Date	Approved

**TENDER**

Status/Suitability of Drawing

**BUROHAPPOLD  
ENGINEERING**

17 Newman Street  
 London  
 W1T 1PD  
 UK

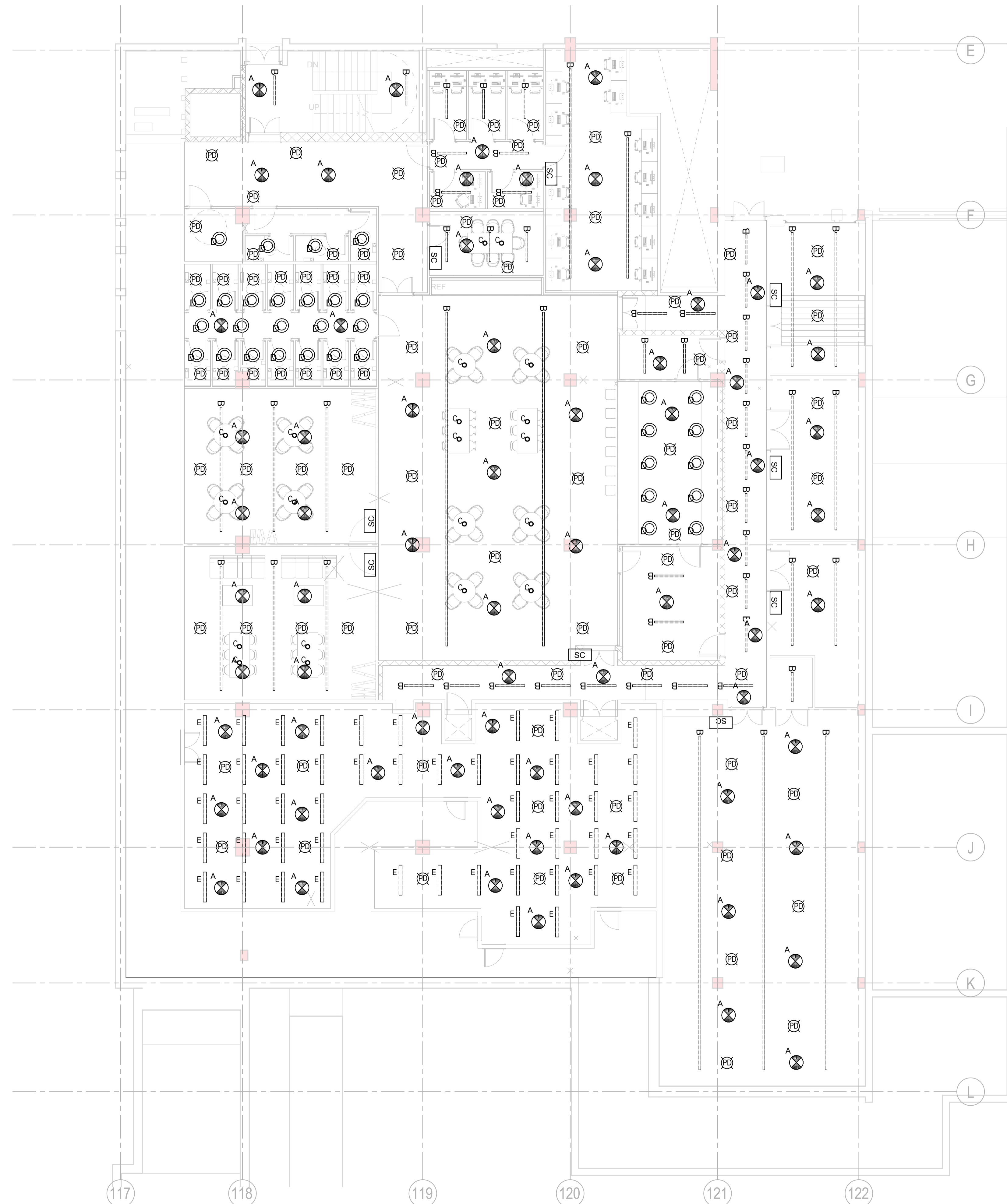
Tel: +44 (0)2079 279 700  
 Fax: +44 (0)207 874 145  
 Email: 035833@burohappold.com  
 Web: www.burohappold.com

Architect *HawkinsBrown*  
 Project **UCL Institute of Education**  
 Dwg Title **Electrical Services  
 Lighting Layout  
 Level 2 Wing A**

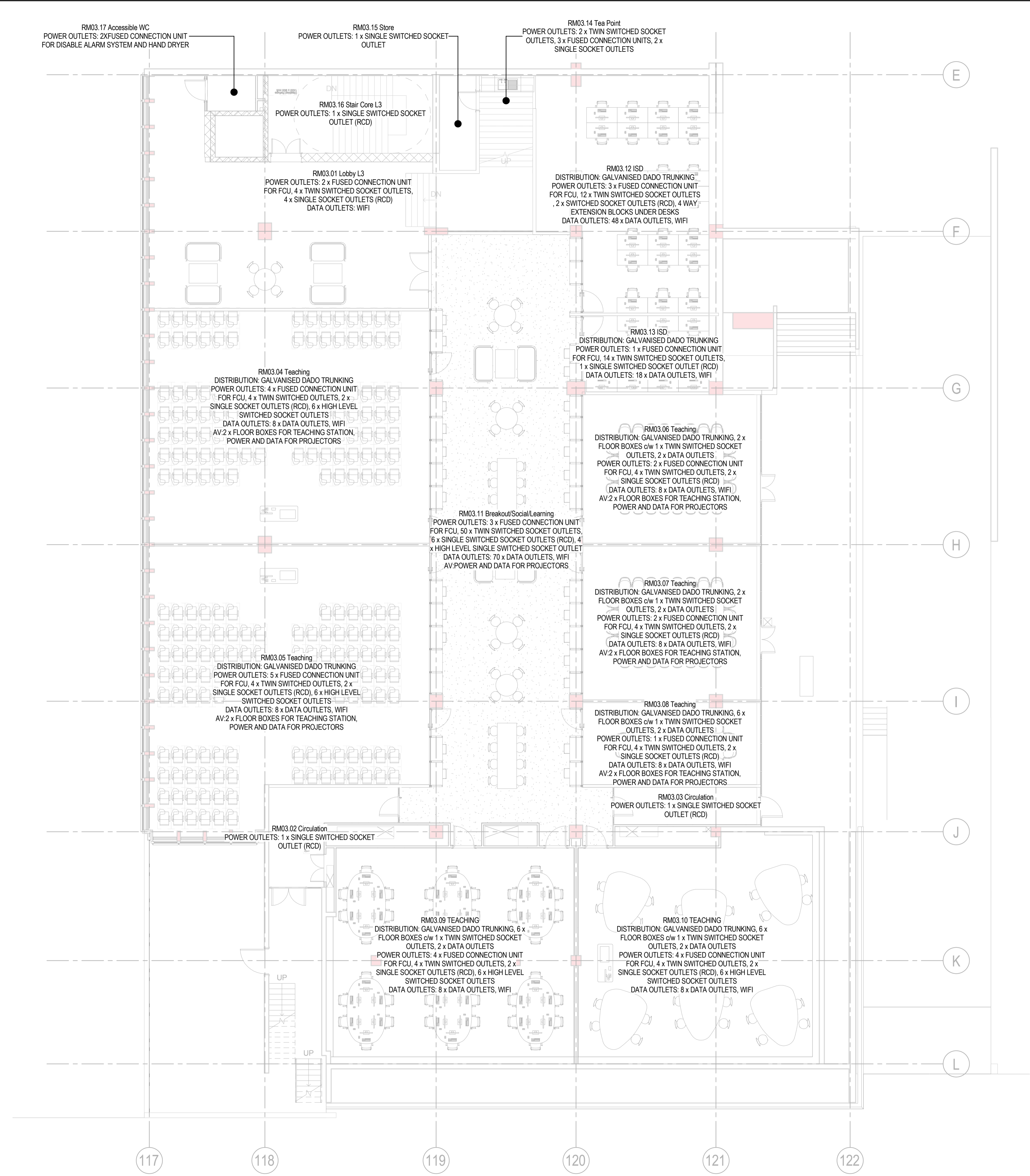
Job No. **035833**  
 Scale@A1 **1 : 100**

Drawing No. **20BW-BHE-WA-02-DR-E-XX-2000**

Revision **P02**



**1** Electrical Services Lighting Layout - Level 2 Wing A



1 Electrical Services Small Power & Data Layout - Level 3 Wing A

© Buro Happold Limited or its group companies.  
 All rights reserved. Buro Happold and its group companies accept no liability for errors or omissions in this drawing unless otherwise agreed in writing under a J10 or J11 of the Copyright, Design and Patents Act 1988.

DO NOT SCALE THIS DRAWING.

**SAFETY HEALTH AND ENVIRONMENTAL INFORMATION**

IN ADDITION TO THE HAZARDS/RISKS NORMALLY ASSOCIATED WITH THE TYPES OF WORK DETAILED ON THIS DRAWING, NOTE THE FOLLOWING:

**CONSTRUCTION**

- WORKING AT HEIGHT
- LIFTING HEAVY EQUIPMENT
- WORKING ADJACENT TO POTENTIALLY LIVE SERVICES
- HANDLING CHEMICAL PRODUCTS
- WORKING IN CONFINED SPACES
- PRESENCE OF ASBESTOS

**MAINTENANCE/CLEANING/OPERATION**

- HANDLING CHEMICAL PRODUCTS
- WORKING AT HEIGHT
- WORKING ADJACENT TO POTENTIALLY LIVE SERVICES

**DECOMMISSIONING/DEMOLITION**

- PRESENCE OF LIVE SERVICES
- PRESENCE OF ASBESTOS
- WORKING AT HEIGHT
- LIFTING HEAVY EQUIPMENT
- PRESENCE OF FLOOR OPENINGS
- ALWAYS SAFELY ISOLATE BEFORE COMMENCING ANY WORKS

- Notes**
- SMALL POWER NOTES**
- THIS DRAWING IS TO BE READ IN CONJUNCTION WITH ALL OTHER DISCIPLINES, DRAWINGS, SCHEDULES AND SPECIFICATIONS, LEGENDS AND STANDARD DETAILS.
  - THIS DRAWING IS COPYRIGHT AND SHALL NOT BE REPRODUCED WITHOUT PERMISSION.
  - DIMENSIONS GOVERN ON ALL DRAWINGS AND DETAILS. SHOULD ANY DISCREPANCIES BE FOUND WITH THIS DRAWING AND ANY ASSOCIATED DRAWINGS OR SPECIFICATIONS THIS SHOULD BE BROUGHT TO THE ATTENTION OF THE M&E BUILDING SERVICES CONSULTANT IMMEDIATELY.
  - UNLESS OTHERWISE STATED ALL DIMENSIONS ARE IN MILLIMETRES.
  - DO NOT SCALE FROM THIS DRAWING.
  - DIMENSIONS TO BE CHECKED ON SITE BEFORE ANY WORK IS PUT IN HAND OR PREFABRICATED.
  - THIS DRAWING SHOULD ONLY BE USED FOR THE SPECIFIC SERVICES INTENDED.
  - THIS DRAWING SHOWS THE DESIGN INTENT ONLY. THE CONTRACTOR SHALL BE RESPONSIBLE FOR THE FULL CO-ORDINATION OF THE SERVICES INDICATED ON THIS AND ALL OTHER SERVICES DRAWINGS.
  - FINAL ACCESS AND SETTING OUT OF SERVICES SHALL BE AGREED BETWEEN THE ARCHITECT AND THE CONTRACTOR.
  - THE PROJECT NOTES ARE TO BE READ IN CONJUNCTION WITH ALL RELEVANT TECHNICAL SPECIFICATIONS.
  - WHERE ELECTRICAL SERVICES PASS THROUGH FIRE COMPARTMENTATION CEILING VOIDS, FLOOR VOIDS AND STRUCTURAL WALLS THE CONTRACTOR SHALL SLEEVE/SEAL THE OPENING WITH AN ACOUSTIC AND FIRE SEALANT APPROVED BY THE ARCHITECT.
  - THE CONTRACTOR SHALL REFER TO THE ARCHITECT'S DRAWINGS FOR DETAILS OF FIRE COMPARTMENTATION.
  - THE CONTRACTOR SHALL REFER TO THE ARCHITECT'S REFLECTED CEILING PLANS AND ROOM ELEVATIONS FOR THE EXACT LOCATION OF ALL SERVICES.
  - DRAWING HAS BEEN PRODUCED FROM INCOMPLETE RECORD INFORMATION AND VISUAL SITE SURVEYS. CONTRACTOR IS RESPONSIBLE FOR VALIDATING ACCURACY PRIOR TO WORKS.
  - CONTRACTOR TO PROVIDE SCHEDULE OF PROPOSED SERVICES ISOLATIONS PRIOR TO WORK COMMENCING.
  - DRAWINGS ARE INDICATIVE ONLY AND ARE SHOWN FOR THE DESIGN INTENT AND THE DESIGN & BUILD CONTRACTOR'S PRICING PURPOSE. THE CONTRACTOR SHALL VERIFY ALL ASPECTS OF THE DESIGN DURING HIS DESIGN PHASE.

PO2	TENDER	08/08/2017	LH
PO1	TENDER	11/04/2017	LH
Rev	Description	Date	Approved

TENDER

Status/Validity of Drawing

BUROHAPPOLD  
ENGINEERING

17 Newman Street  
 London  
 W1T 1PD  
 UK

Tel: +44 (0)2079 279 700  
 Fax: +44 (0)207 874 145  
 Email: 035833@burohappold.com  
 Web: www.burohappold.com

Architect *HawkinsBrown*  
 Project **UCL Institute of Education**  
 Dwg Title **Electrical Services  
 Small Power & Data Layout  
 Level 3 Wing A**

Job No. <b>035833</b>	Scale@A1 <b>1 : 100</b>
Drawing No. <b>20BW-BHE-WA-03-DR-E-XX-1000</b>	Revision <b>P02</b>

DO NOT SCALE THIS DRAWING.

**SAFETY HEALTH AND ENVIRONMENTAL INFORMATION**

IN ADDITION TO THE HAZARDS/RISKS NORMALLY ASSOCIATED WITH THE TYPES OF WORK DETAILED ON THIS DRAWING, NOTE THE FOLLOWING:

- CONSTRUCTION**
1. WORKING AT HEIGHT
  2. LIFTING HEAVY EQUIPMENT
  3. WORKING ADJACENT TO POTENTIALLY LIVE SERVICES
  4. HANDLING CHEMICAL PRODUCTS
  5. WORKING IN CONFINED SPACES
  6. PRESENCE OF ASBESTOS

- MAINTENANCE/CLEANING/OPERATION**
1. HANDLING CHEMICAL PRODUCTS
  2. WORKING AT HEIGHT
  3. WORKING ADJACENT TO POTENTIALLY LIVE SERVICES

- DECOMMISSIONING/DEMOLITION**
1. PRESENCE OF LIVE SERVICES
  2. PRESENCE OF ASBESTOS
  3. WORKING AT HEIGHT
  4. LIFTING HEAVY EQUIPMENT
  5. PRESENCE OF FLOOR OPENINGS
  6. ALWAYS SAFELY ISOLATE BEFORE COMMENCING ANY WORKS

**Notes**

**LIGHTING NOTES**

1. THIS DRAWING IS TO BE READ IN CONJUNCTION WITH ALL OTHER DISCIPLINES, DRAWINGS, SCHEDULES AND SPECIFICATIONS, LEGENDS AND STANDARD DETAILS.
2. THIS DRAWING IS COPYRIGHT AND SHALL NOT BE REPRODUCED WITHOUT PERMISSION.
3. DIMENSIONS GOVERN ON ALL DRAWINGS AND DETAILS. SHOULD ANY DISCREPANCIES BE FOUND WITH THIS DRAWING AND ANY ASSOCIATED DRAWINGS OR SPECIFICATIONS THIS SHOULD BE BROUGHT TO THE ATTENTION OF THE M&E BUILDING SERVICES CONSULTANT IMMEDIATELY.
4. UNLESS OTHERWISE STATED ALL DIMENSIONS ARE IN MILLIMETRES.
5. DO NOT SCALE FROM THIS DRAWING.
6. DIMENSIONS TO BE CHECKED ON SITE BEFORE ANY WORK IS PUT IN HAND OR PREFABRICATED.
7. THIS DRAWING SHOULD ONLY BE USED FOR THE SPECIFIC SERVICES INTENDED.
8. THIS DRAWING SHOWS THE DESIGN INTENT ONLY. THE CONTRACTOR SHALL BE RESPONSIBLE FOR THE FULL CO-ORDINATION OF THE SERVICES INDICATED ON THIS AND ALL OTHER SERVICES DRAWINGS.
9. FINAL ACCESS AND SETTING OUT OF SERVICES SHALL BE AGREED BETWEEN THE ARCHITECT AND THE CONTRACTOR.
10. THE PROJECT NOTES ARE TO BE READ IN CONJUNCTION WITH ALL RELEVANT TECHNICAL SPECIFICATIONS.
11. WHERE ELECTRICAL SERVICES PASS THROUGH FIRE COMPARTMENTATION CEILING VOIDS, FLOOR VOIDS AND STRUCTURAL WALLS THE CONTRACTOR SHALL SLEEVE/SEAL THE OPENING WITH AN ACOUSTIC AND FIRE SEALANT APPROVED BY THE ARCHITECT.
12. THE CONTRACTOR SHALL REFER TO THE ARCHITECT'S DRAWINGS FOR DETAILS OF FIRE COMPARTMENTATION.
13. FOR THE SPECIFICATION OF ALL LUMINAIRES PLEASE REFER TO THE LUMINAIRE SCHEDULE.
14. THE CONTRACTOR SHALL REFER TO THE ARCHITECT'S REFLECTED CEILING PLANS AND ROOM ELEVATIONS FOR THE EXACT LOCATION OF ALL SERVICES.
15. DRAWING HAS BEEN PRODUCED FROM INCOMPLETE RECORD INFORMATION AND VISUAL SITE SURVEYS. CONTRACTOR IS RESPONSIBLE FOR VALIDATING ACCURACY PRIOR TO WORKS.
16. CONTRACTOR TO PROVIDE SCHEDULE OF PROPOSED SERVICES ISOLATIONS PRIOR TO WORK COMMENCING.
17. DRAWINGS ARE INDICATIVE ONLY AND ARE SHOWN FOR THE DESIGN INTENT AND THE DESIGN & BUILD CONTRACTOR'S PRICING PURPOSE. THE CONTRACTOR SHALL VERIFY ALL ASPECTS OF THE DESIGN DURING HIS DESIGN PHASE.

P02	TENDER	08/08/2017	LH
P01	TENDER	11/04/2017	LH
Rev	Description	Date	Approved

**TENDER**

Status/Stability of Drawing

**BUROHAPPOLD  
ENGINEERING**

17 Newman Street  
 London  
 W1T 1PD  
 UK

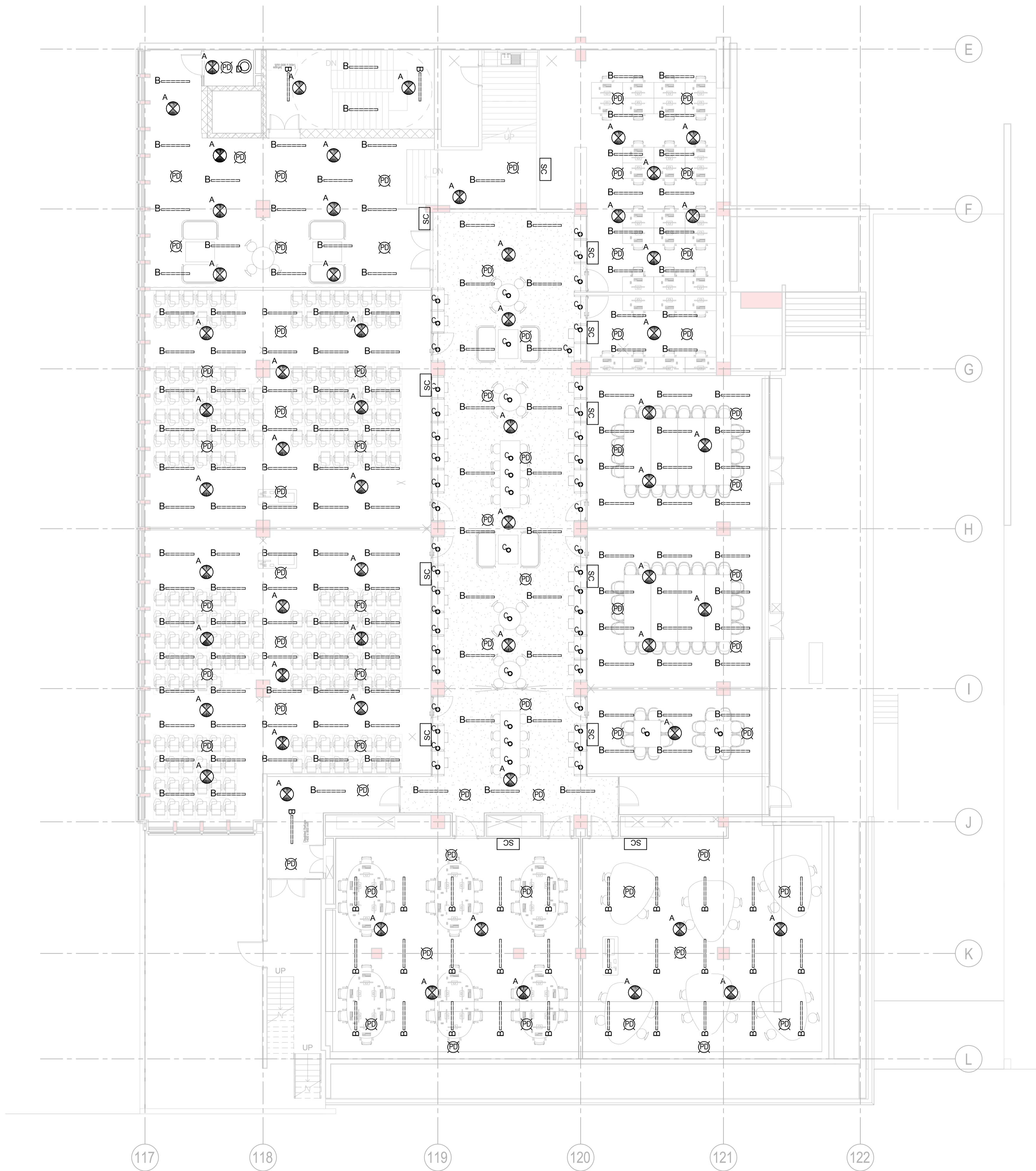
Tel: +44 (0)2079 279 700  
 Fax: +44 (0)207 874 145  
 Email: 035833@burohappold.com  
 Web: www.burohappold.com

Architect *HawkinsBrown*  
 Project **UCL Institute of Education**  
 Dwg Title **Electrical Services  
 Lighting Layout  
 Level 3 Wing A**

Job No. **035833**  
 Scale@A1 **1 : 100**

Drawing No. **20BW-BHE-WA-03-DR-E-XX-2000**

Revision **P02**



**1** Electrical Services Lighting Layout - Level 3 Wing A

DO NOT SCALE THIS DRAWING.

**SAFETY HEALTH AND ENVIRONMENTAL INFORMATION**

IN ADDITION TO THE HAZARDS/RISKS NORMALLY ASSOCIATED WITH THE TYPES OF WORK DETAILED ON THIS DRAWING, NOTE THE FOLLOWING:

- CONSTRUCTION**
1. WORKING AT HEIGHT
  2. LIFTING HEAVY EQUIPMENT
  3. WORKING ADJACENT TO POTENTIALLY LIVE SERVICES
  4. HANDLING CHEMICAL PRODUCTS
  5. WORKING IN CONFINED SPACES
  6. PRESENCE OF ASBESTOS

- MAINTENANCE/CLEANING/OPERATION**
1. WORKING AT HEIGHT
  2. WORKING ADJACENT TO POTENTIALLY LIVE SERVICES

**DECOMMISSIONING/DEMOLITION**

1. PRESENCE OF LIVE SERVICES
2. PRESENCE OF ASBESTOS
3. WORKING AT HEIGHT
4. LIFTING HEAVY EQUIPMENT
5. PRESENCE OF FLOOR OPENINGS
6. ALWAYS SAFELY ISOLATE BEFORE COMMENCING ANY WORKS

**Notes**

**FIRE ALARM NOTES**

1. THIS DRAWING IS TO BE READ IN CONJUNCTION WITH ALL OTHER DISCIPLINES, DRAWINGS, SCHEDULES AND SPECIFICATIONS, LEGENDS AND STANDARD DETAILS.
2. THIS DRAWING IS COPYRIGHT AND SHALL NOT BE REPRODUCED WITHOUT PERMISSION.
3. DIMENSIONS GOVERN ON ALL DRAWINGS AND DETAILS. SHOULD ANY DISCREPANCIES BE FOUND WITH THIS DRAWING AND ANY ASSOCIATED DRAWINGS OR SPECIFICATIONS THIS SHOULD BE BROUGHT TO THE ATTENTION OF THE M&E BUILDING SERVICES CONSULTANT IMMEDIATELY.
4. UNLESS OTHERWISE STATED ALL DIMENSIONS ARE IN MILLIMETRES.
5. DO NOT SCALE FROM THIS DRAWING.
6. DIMENSIONS TO BE CHECKED ON SITE BEFORE ANY WORK IS PUT IN HAND OR PREFABRICATED.
7. THIS DRAWING SHOULD ONLY BE USED FOR THE SPECIFIC SERVICES INTENDED.
8. THIS DRAWING SHOWS THE DESIGN INTENT ONLY. THE CONTRACTOR SHALL BE RESPONSIBLE FOR THE FULL CO-ORDINATION OF THE SERVICES INDICATED ON THIS AND ALL OTHER SERVICES DRAWINGS.
9. FINAL ACCESS AND SETTING OUT OF SERVICES SHALL BE AGREED BETWEEN THE ARCHITECT AND THE CONTRACTOR.
10. THE PROJECT NOTES ARE TO BE READ IN CONJUNCTION WITH ALL RELEVANT TECHNICAL SPECIFICATIONS.
11. WHERE ELECTRICAL SERVICES PASS THROUGH FIRE COMPARTMENTATION CEILING VOIDS, FLOOR VOIDS AND STRUCTURAL WALLS THE CONTRACTOR SHALL SLEEVE/SEAL THE OPENING WITH AN ACOUSTIC AND FIRE SEALANT APPROVED BY THE ARCHITECT.
12. THE CONTRACTOR SHALL REFER TO THE ARCHITECT'S DRAWINGS FOR DETAILS OF FIRE COMPARTMENTATION.
13. THE CONTRACTOR SHALL REFER TO THE ARCHITECT'S REFLECTED CEILING PLANS AND ROOM ELEVATIONS FOR THE EXACT LOCATION OF ALL SERVICES.
14. THE MAXIMUM NUMBER OF FIRE DEVICES PER LOOP SHALL NOT EXCEED THE SELECTED MANUFACTURER'S MAXIMUM ALLOWABLE POWER/LOOP AVAILABLE.
15. NO LOOP SHALL EXCEED THE MAXIMUM PERMITTED VOLTAGE DROP AS SPECIFIED BY THE SELECTED MANUFACTURER.
16. THE DEVICES INDICATED ON THE FIRE ALARM SCHEMATIC ARE INDICATIVE ONLY. THE CONTRACTOR SHALL SHOW ACTUAL DEVICES PER LOOP ON HIS WORKING DRAWINGS.
17. DRAWING HAS BEEN PRODUCED FROM INCOMPLETE RECORD INFORMATION AND VISUAL SITE SURVEYS. CONTRACTOR IS RESPONSIBLE FOR VALIDATING ACCURACY PRIOR TO WORKS.
18. CONTRACTOR TO PROVIDE SCHEDULE OF PROPOSED SERVICES ISOLATIONS PRIOR TO WORK COMMENCING.
19. DRAWINGS ARE INDICATIVE ONLY AND ARE SHOWN FOR THE DESIGN INTENT AND THE DESIGN & BUILD CONTRACTOR'S PRICING PURPOSE. THE CONTRACTOR SHALL VERIFY ALL ASPECTS OF THE DESIGN DURING HIS DESIGN PHASE.

PO2	TENDER	08/08/2017	LH
PO1	TENDER	11/04/2017	LH
Rev	Description	Date	Approved

**TENDER**

Status/Stability of Drawing

**BUROHAPPOLD  
ENGINEERING**

17 Newman Street  
 London  
 W1T 1PD  
 UK

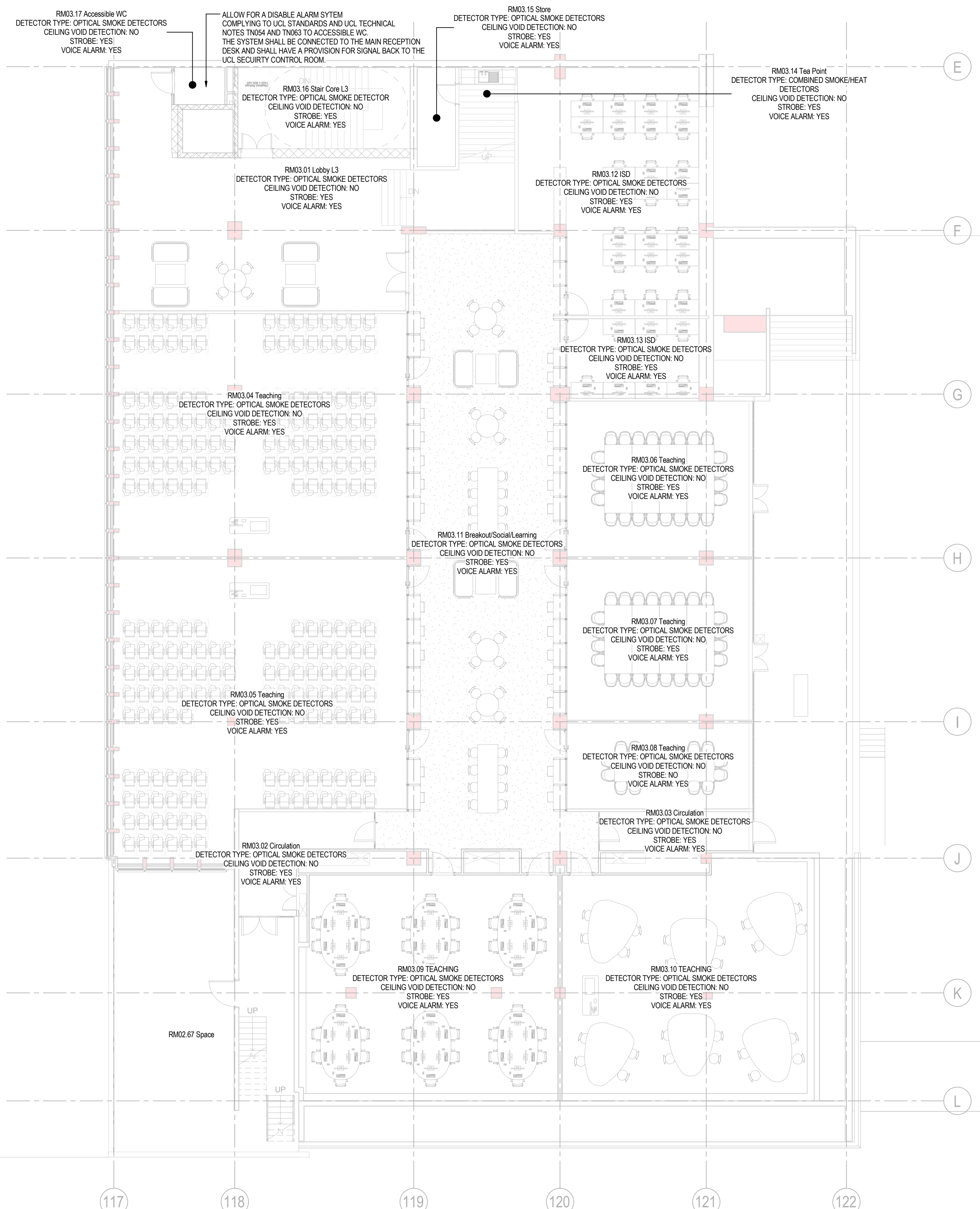
Tel: +44 (0)2079 279 700  
 Fax: +44 (0)207 874 145  
 Email: 035833@burohappold.com  
 Web: www.burohappold.com

Architect: *HawkinsBrown*  
 Project: **UCL Institute of Education**  
 Dwg Title: **Electrical Services  
 Fire Alarm Layout  
 Level 3 Wing A**

Job No: **035833**  
 Scale@A1: **1 : 100**

Drawing No: **20BW-BHE-WA-03-DR-E-XX-3000**

Revision: **P02**



**1 Electrical Services Fire Alarm Layout - Level 3 Wing A**